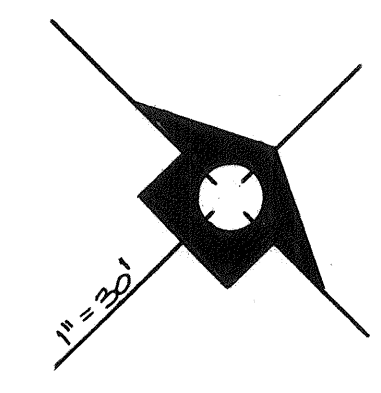
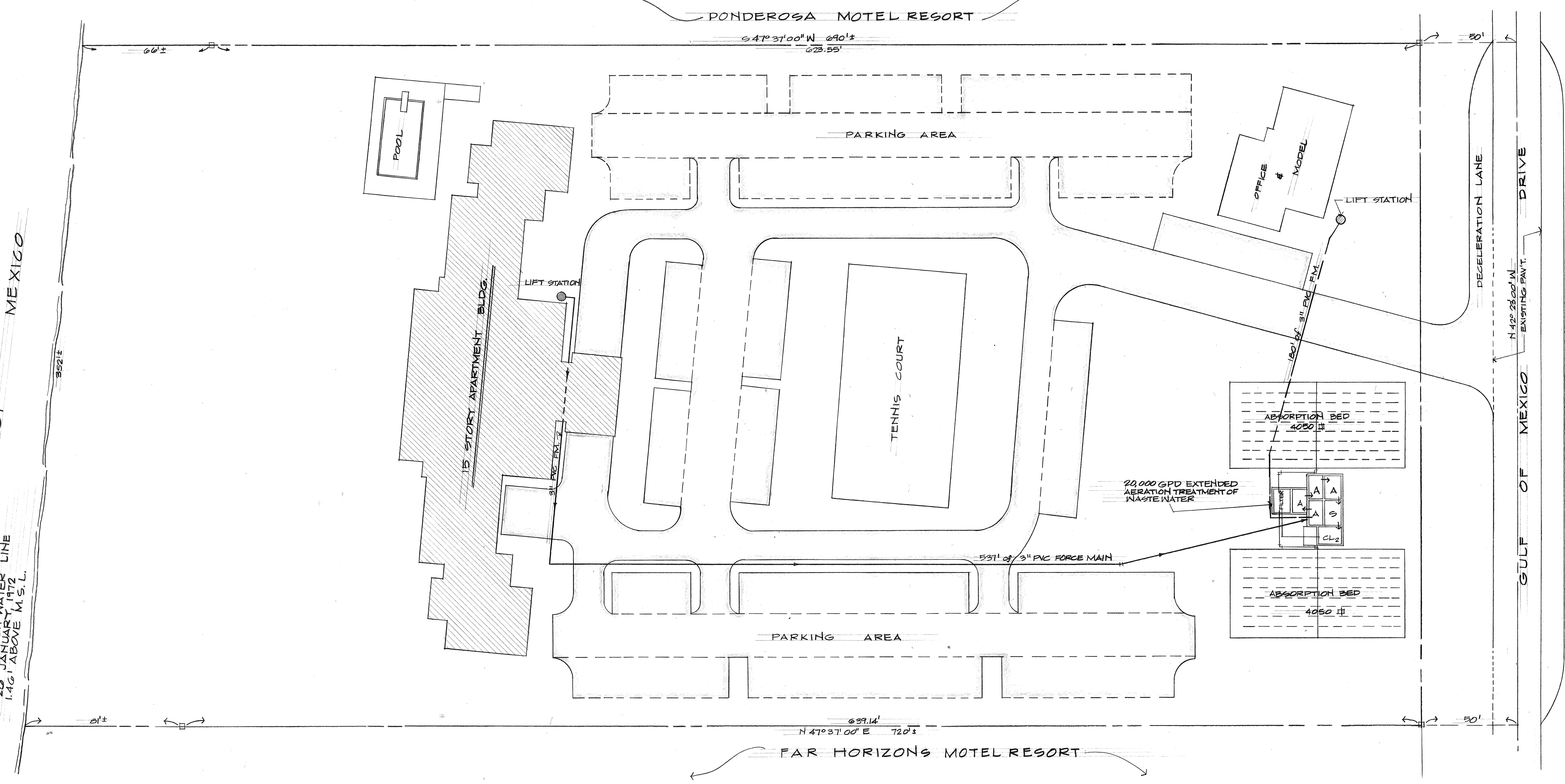


GULF OF MEXICO
 MEAN HIGH WATER LINE
 20 JANUARY, 1972
 1.46' ABOVE M.S.L.



SITE PLAN
 SHOWING "AS BUILT" WASTEWATER COLLECTION SYSTEM

REVISION	SHEET NUMBER	ENGINEER'S LOCATION	T.L.K. FILE NO.
		TOWN OF LONGBOAT KEY, FLORIDA	
		SEAGATE CLUB	
		GULF OF MEXICO DRIVE	SARASOTA, FLORIDA
		L.T.R. DATE	
		REVISION	
		BY	
		SCALE:	
		DATE:	
		DESIGNED BY	PROJECT ENGINEER
		CHECKED BY	PROJECT NO.
		DRAWN BY	