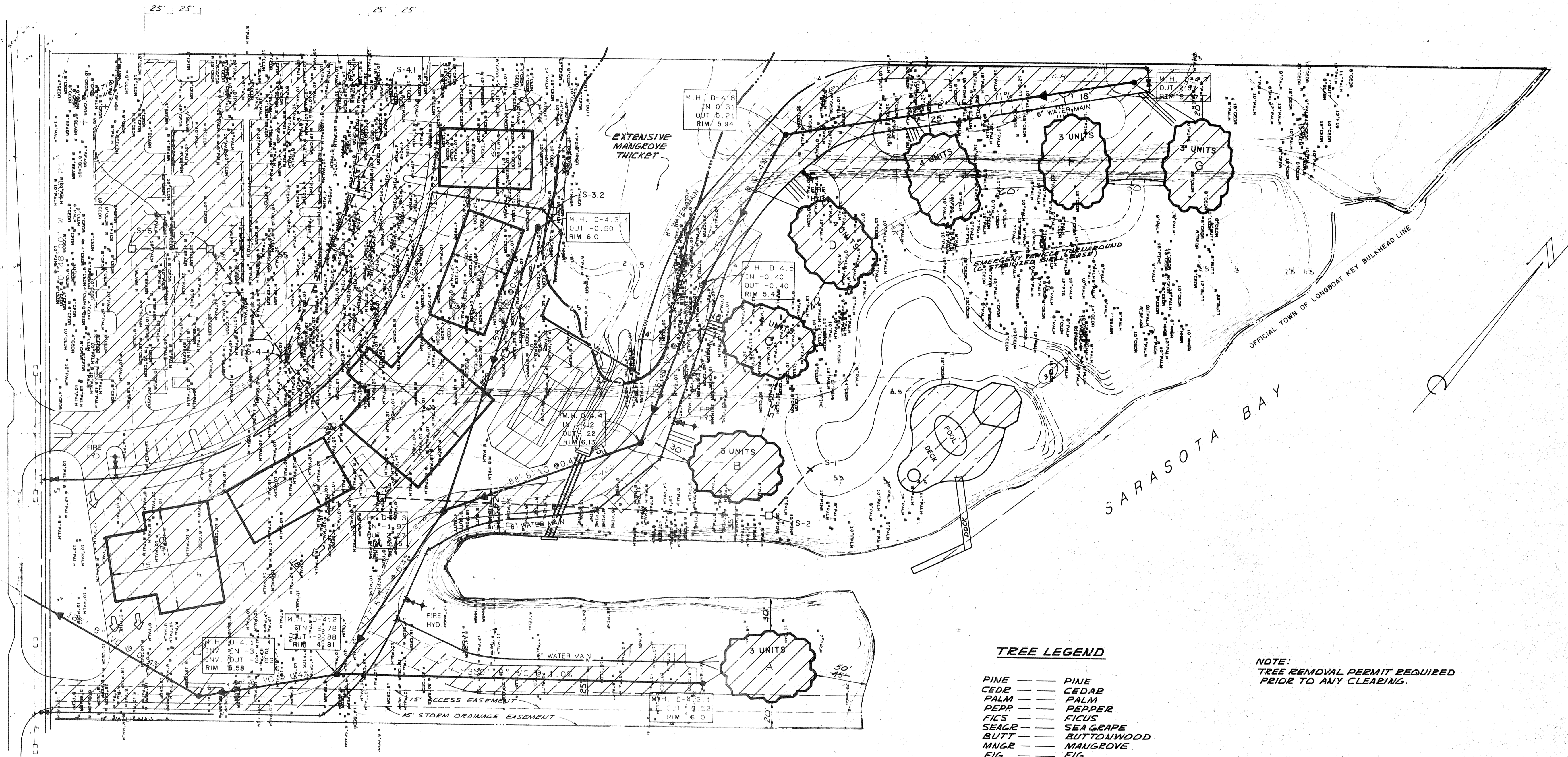


GULF OF MEXICO DRIVE

EXISTING

M.H. 0.4  
N.V. 4.54  
I.N. 4.36

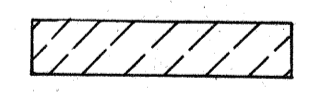


TREES TO BE RELOCATED

- TREE LEGEND**
- PINE — PINE
  - CEDR — CEDAR
  - PALM — PALM
  - PEPP — PEPPER
  - FICS — FICUS
  - SEALB — SEA GRAPE
  - BUTT — BUTTONWOOD
  - MNGR — MANGROVE
  - FIG — FIG
  - BAU — BAYAN

NOTE:  
TREE REMOVAL PERMIT REQUIRED  
PRIOR TO ANY CLEARING.

TREE REMOVAL AREA



BENNETT & BISHOP

P. WALLENBERG DEVELOPMENT CO. INC.  
SANDHAM

297-012

DATE	SEPT. 7, 93
SCALE	1" = 50'
DESIGN	R.F.
DRAWN	R.F.
CHECK	
APPROVED	

DATE	4-30-95
DESCRIPTION	REV. BLDG. #1 - OFFSET

APPROVED BY  
*William Bishop*