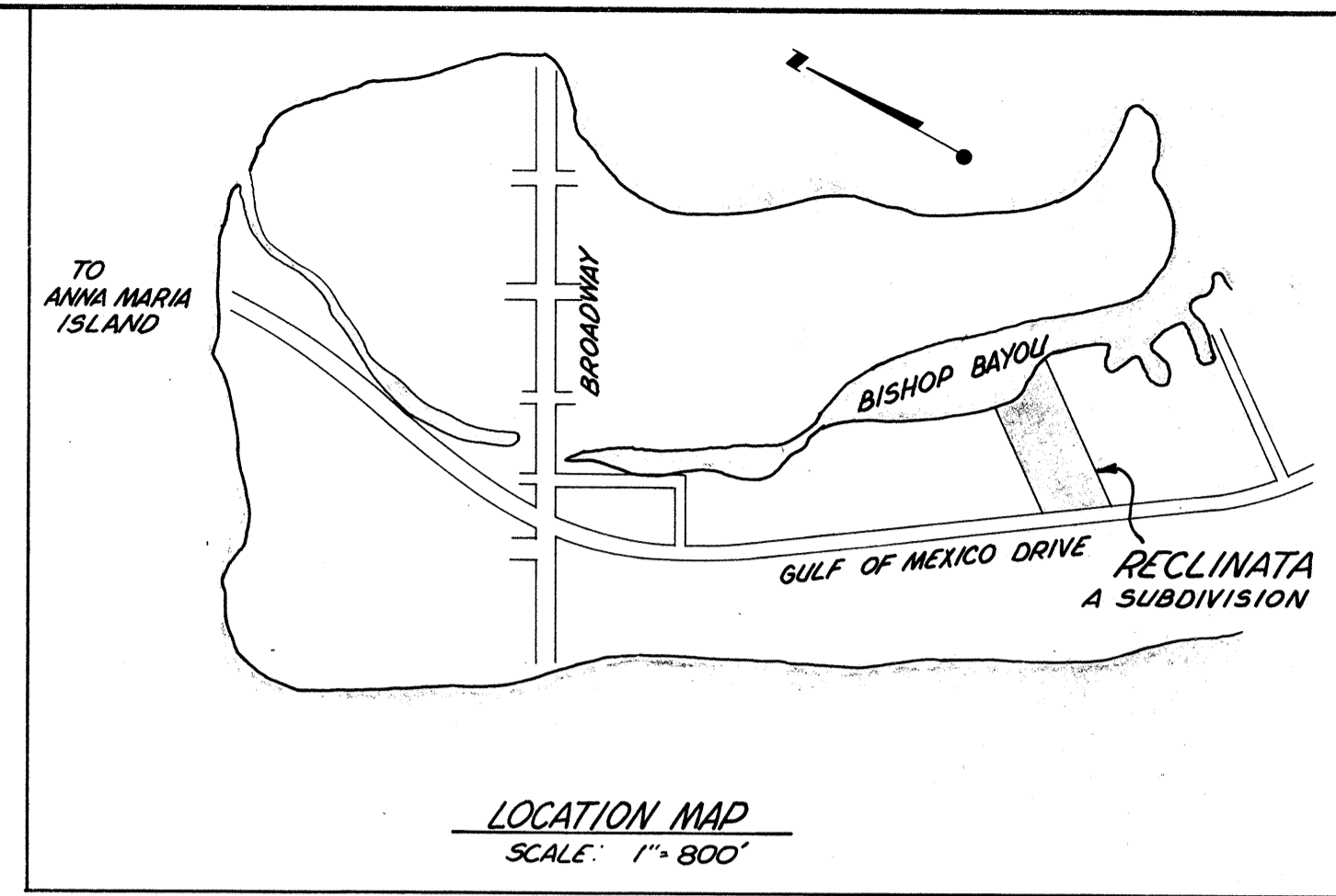
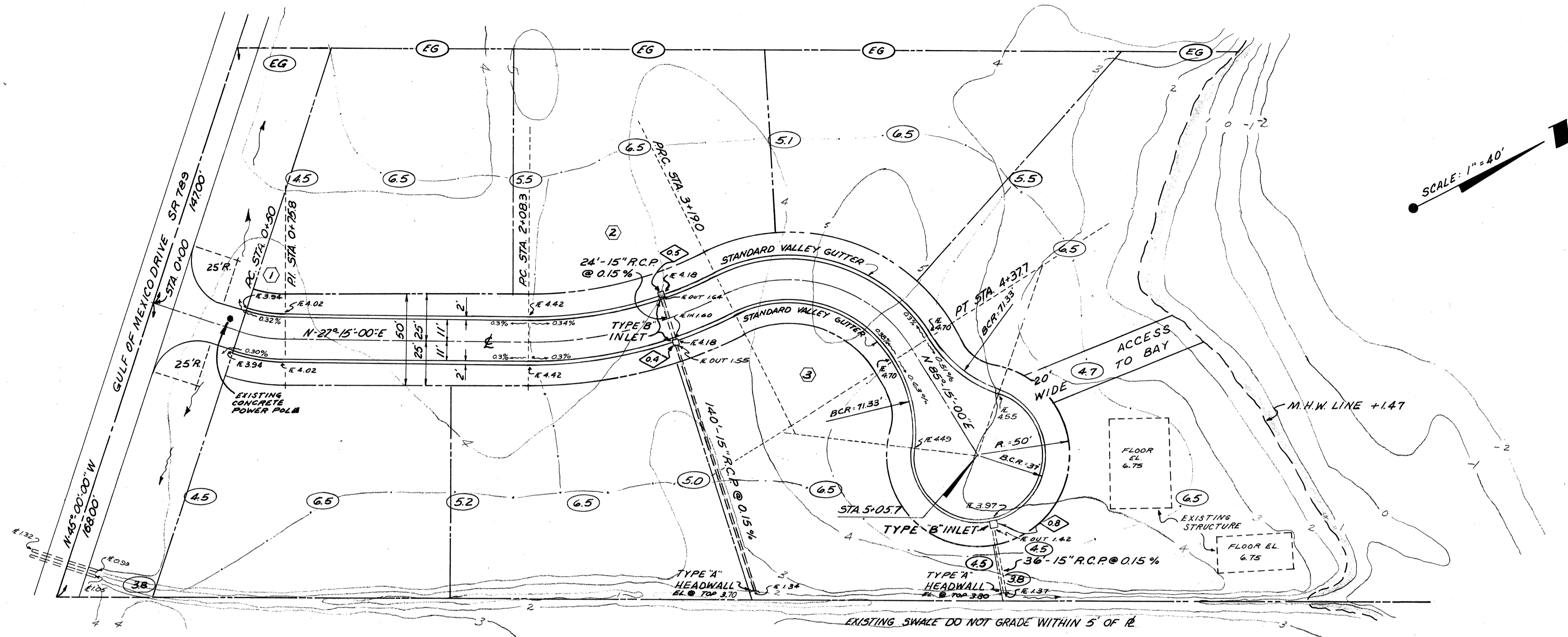


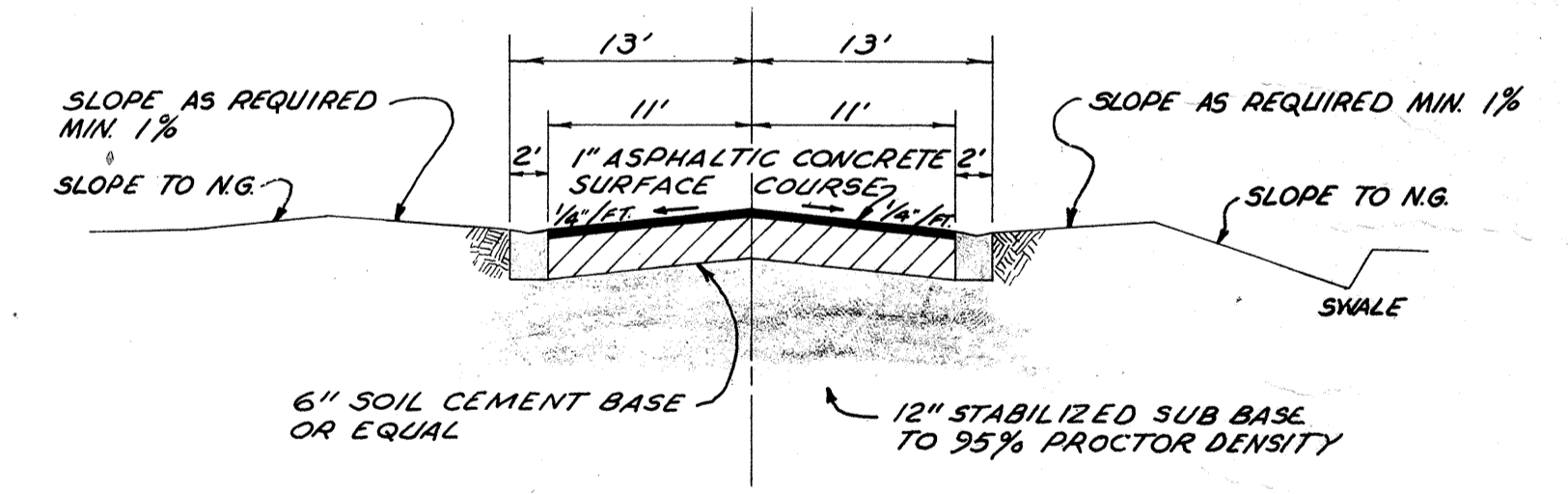
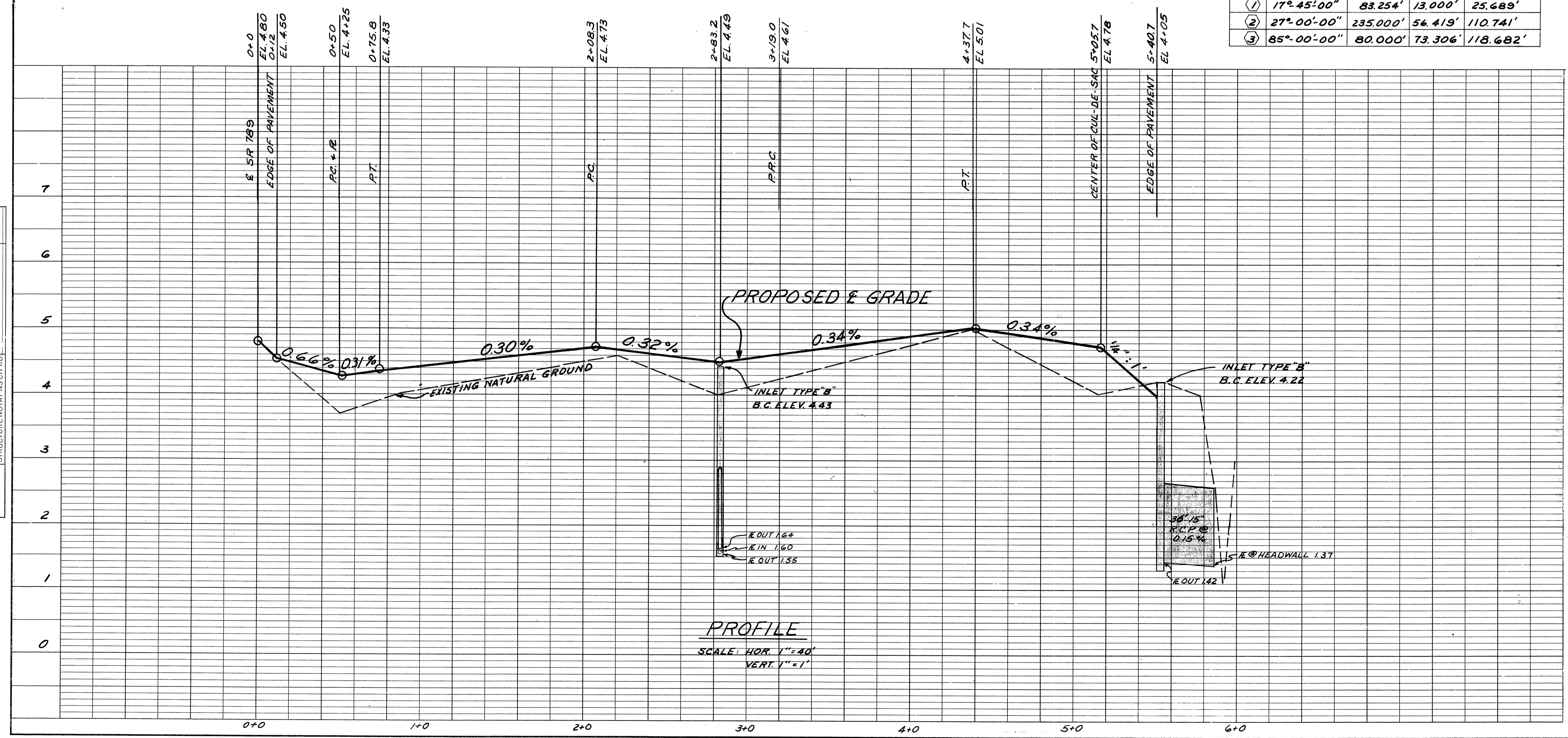
PLAN
 SURVEYED BY: _____ DATE: _____
 PLOTTED AND CHECKED BY: _____
 NOTE BOOK NO. _____
 STRUCTURE NOTATIONS CHECKED BY: _____

PROFILE
 SURVEYED BY: _____ DATE: _____
 PLOTTED AND CHECKED BY: _____
 NOTE BOOK NO. _____
 STRUCTURE NOTATIONS CHECKED BY: _____



- LEGEND**
- 3 EXISTING CONTOURS
 - OO PROPOSED NATURAL GROUND ELEVATIONS
 - INLET AND SEWER SYMBOLS PROPOSED INLETS AND STORM SEWERS
 - RIDGE LINE
 - ◇ AREA DRAINING INTO INLET IN ACRES
 - 6.5 BUILDING PAD ELEVATION WHICH VARIES IN SIZE AND LOCATION IN EACH LOT

Δ	ER	T	L
① 17° 45' 00"	83.254'	13.000'	25.689'
② 27° 00' 00"	235.000'	56.419'	110.741'
③ 85° 00' 00"	80.000'	73.306'	118.682'



ELEVATIONS REFER TO 1929 S.L.D. = 0.0

REVISIONS LTR. DESCRIPTION, DATE AND BY A CHANGE CUL-DE-SAC ROW TO 100' WITH OTHER APPROPRIATE CHANGES 11-10-71 L.O.L.		SCALE: 1"=40' HOR 1"=1' VER DESIGNED BY: L. D.L. CHECKED BY:	DATE: 8-23-71 DRAWN BY: L. D.L. B. 72E	FOR: HERB FIELD LONGBOAT KEY, FLORIDA GRADING & DRAINAGE PLAN & PROFILE RECLINATA DRIVE LONGBOAT KEY, FLORIDA
APPROVED BY: DONALD J. SMALLY, P.E. FLA. CERT. NO. 5051		PROJECT NO. 1359 DRAWING NUMBER E-1359-2		CONSULTING ENGINEERS - SARASOTA, FLORIDA REVISION 4