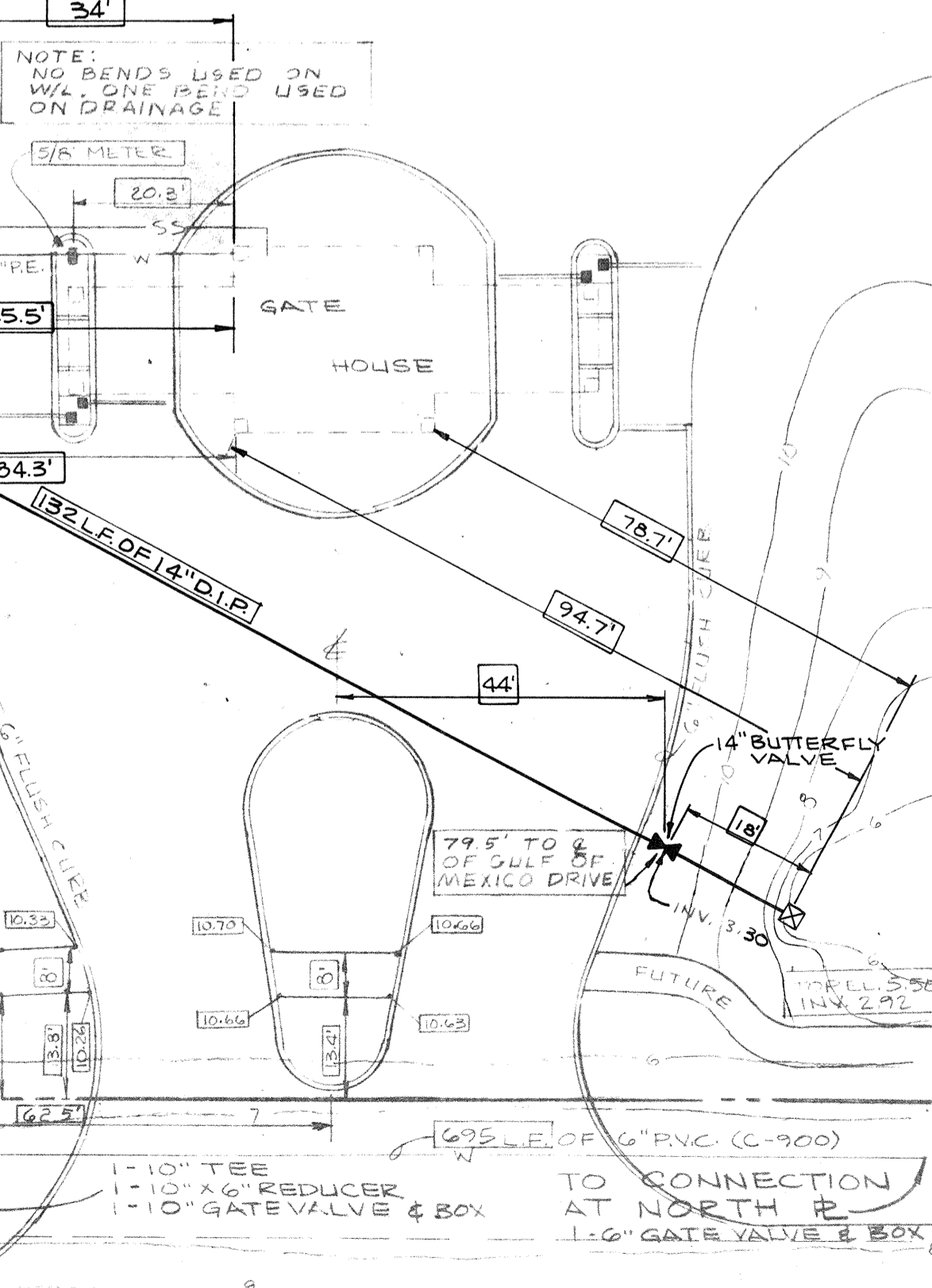


NOTE: ALL UTILITY CONSTRUCTION AND MATERIALS TO COMPLY WITH CODES AND REGULATIONS OF THE TOWN OF LONGBOAT KEY.

MATERIALS:
 STORM SEWER - 15" & LARGER: REINFORCED CONCRETE, O-RING JOINTS
 12" & SMALLER: PVC SEWER ASTM 3034
 14" PUMPED LINE, O.I. (WRAPPED)
 WATER & SANITARY - SEE DETAIL DRAWING



PROJECT ENGINEER	DESIGNED BY	DATE:	SCALE:	BY	REVISION	LTR.	DATE
LDL	LDL	11-1-85	1" = 20'	ALP			
CHECKED BY	DRAWN BY						
LDL	ALP						
PROJECT NO.	PROJECT NO.						
380	380						
TOWN OF LONGBOAT KEY, FLORIDA PARKSHORE DEVELOPMENT CO., INC. PROMENADE I - AS BUILT WATER DISTRIBUTION - SEWER COLLECTION - DRAINAGE HOUGHTON, GOLLNICK & LIPPETT, INC. - CONSULTING ENGINEERS - 3805 SOUTH SHADE AVENUE, SARASOTA, FL 33581							
SHEET NUMBER CP 380-2 REVISION							