

40 SARASOTA CENTER BOULEVARD, UNIT H
SARASOTA, FLORIDA 34240
PHONE NO.: (841) 341-9935
CERTIFICATE OF AUTHORIZATION NO. L.B. 7044

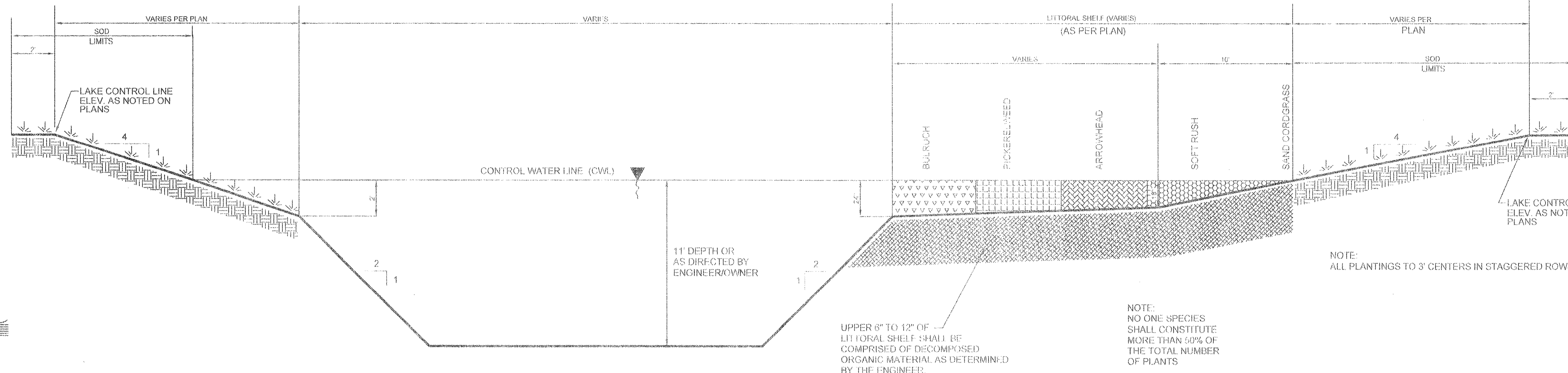
REPORT OF SURVEY

ACCURACY:
VERTICAL: FIELD-MEASURED CONTROL FOR VERTICAL DATA SHOWN HEREON ARE BASED ON A LEVEL LOOP. CLOSURE IN FEET EXCEEDS A STANDARD OF PLUS OR MINUS 0.05 TIMES THE SQUARE ROOT OF THE DISTANCE IN MILES.

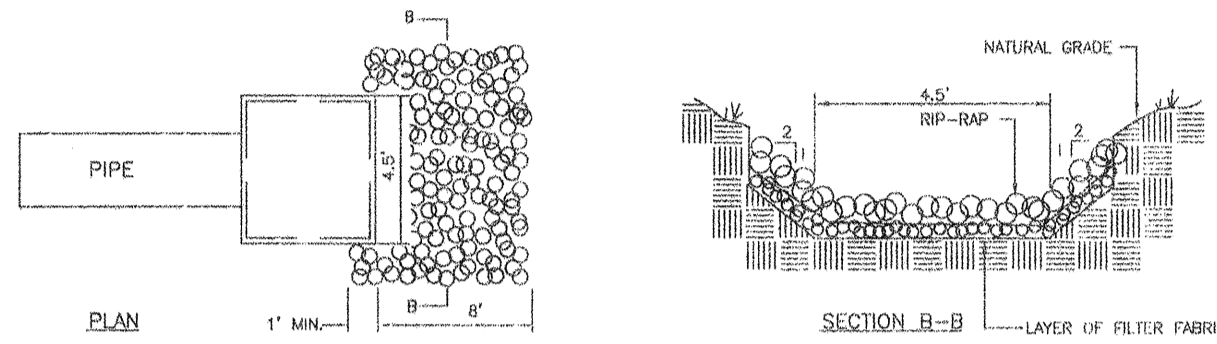
DATA SOURCE:
1. CONSTRUCTION PLANS IN AUTOCAD FORMAT FURNISHED BY CONSUL-TECH DEVELOPMENT SERVICES INC.
2. BOUNDARY SURVEY BY MSB SURVEYING INC.
3. NO OTHER INFORMATION WAS RESEARCHED OR FURNISHED.

NOTES:
1. THIS MAP REPRESENTS A UTILITY RECORD SURVEY RELATIVE TO THE CONSTRUCTION PLAN FOR POSITANO, BY CONSUL-TECH DEVELOPMENT SERVICES, INC. RECORD DATA IS OVERLAID ONTO CONSTRUCTION PLANS IN AUTOCAD FORMAT. ALL GRAY SCALE DATA IS FOR REFERENCE ONLY & IS NOT A PART OF THIS SURVEY.
2. ELEVATIONS SHOWN HEREON ARE IN FEET AND DECIMALS REFERENCED TO NGVD 1929 AND ARE BASED ON DNR (SURVEY MARK) MONUMENT R-62A (RESET 1985) PUBLISHED ELEVATION=8.82 N.G.V.D. 1929.
3. UTILITY RECORD SURVEY IS NOT VALID UNLESS ALL SHEETS AS DICTATED BY THE COVER SHEET ARE PRESENT.

RECORD SURVEY

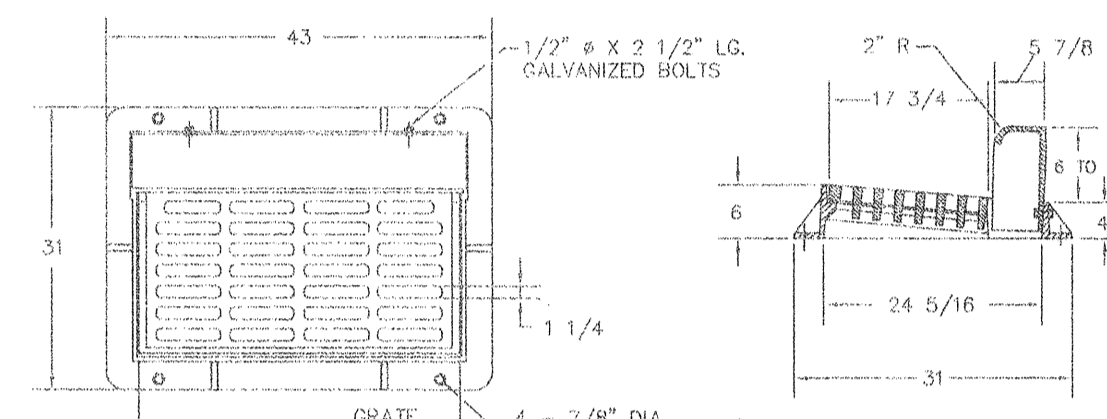


TYPICAL LAKE / LITTORAL SHELF SECTION
N.T.S.



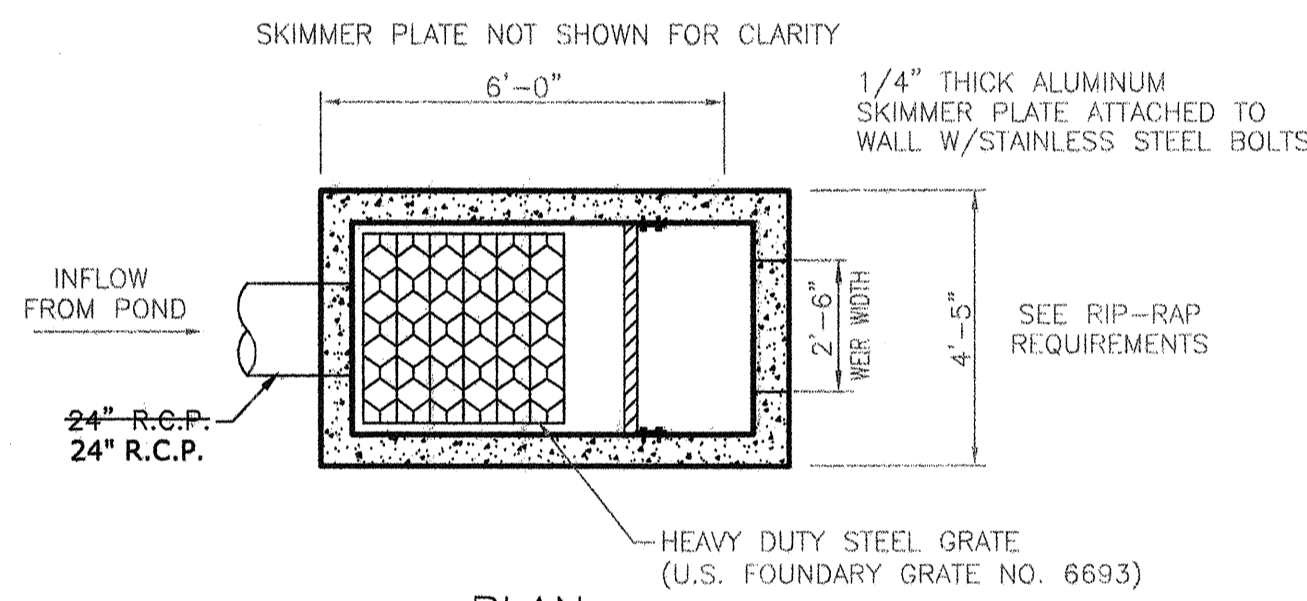
RIP-RAP APRON AT OUTFALL CONTROL STRUCTURE
N.T.S.

GENERAL NOTES:
1. RIP-RAP SHOULD EXTEND UP BOTH SIDES OF THE APRON AND AROUND THE END OF THE STRUCTURE AT THE DISCHARGE OUTFALL.
2. RIP-RAP SHOULD BE SAND/CEMENT BAGS PLACED UNIFORMLY END TO END AND SIDE TO SIDE. BAGS SHALL BE LAD OR FILTER FABRIC ON A FLAT LEVEL PLANE.

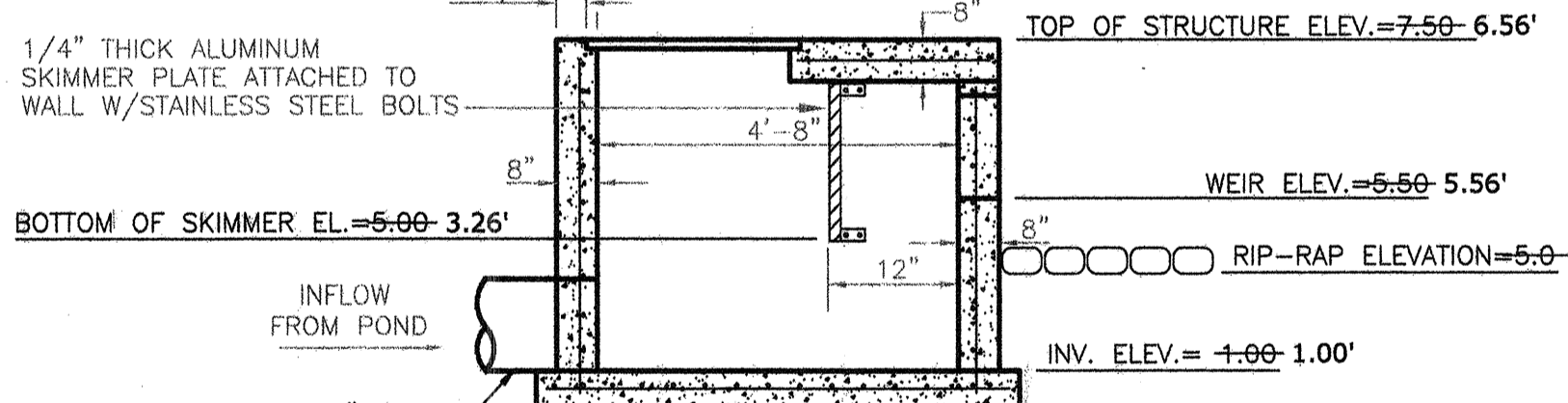


USF 5130 FRAME & HOOD & 6168 GRATE

NOTES:
1- MATERIAL: ASTM-A48 CLASS 30B GRAY IRON.
2- FRAME WT: 195 LBS. APP.
3- GRATE WT: 215 LBS. APP.
4- HOOD WT: 120 LBS. APP.

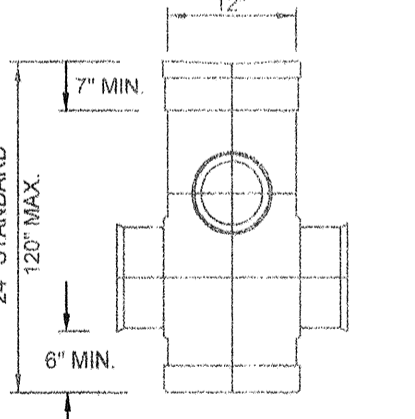


OUTFALL CONTROL STRUCTURE
N.T.S.



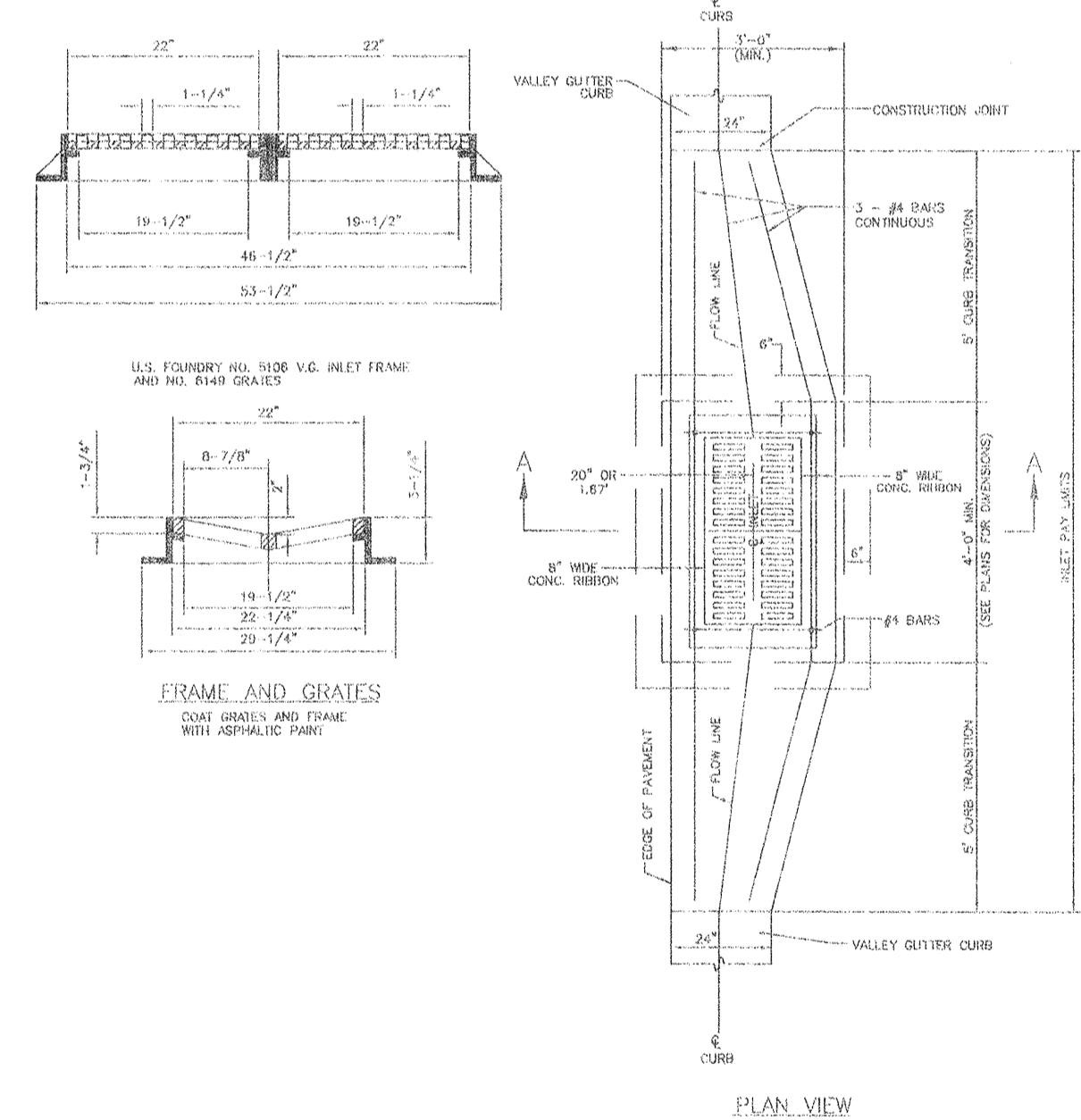
OUTFALL CONTROL STRUCTURE SECTION
N.T.S.

YARD DRAIN GRATE

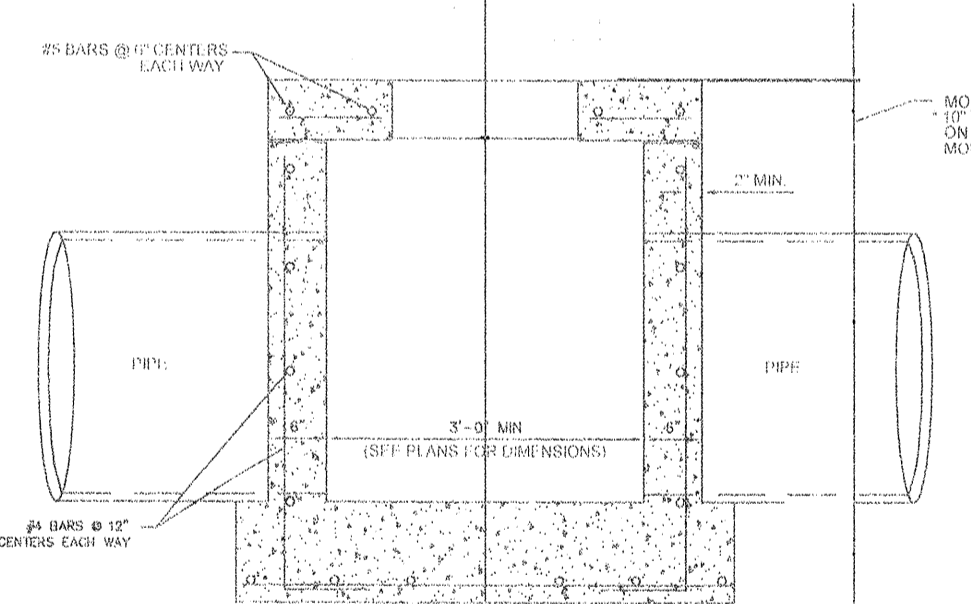


12\"/>

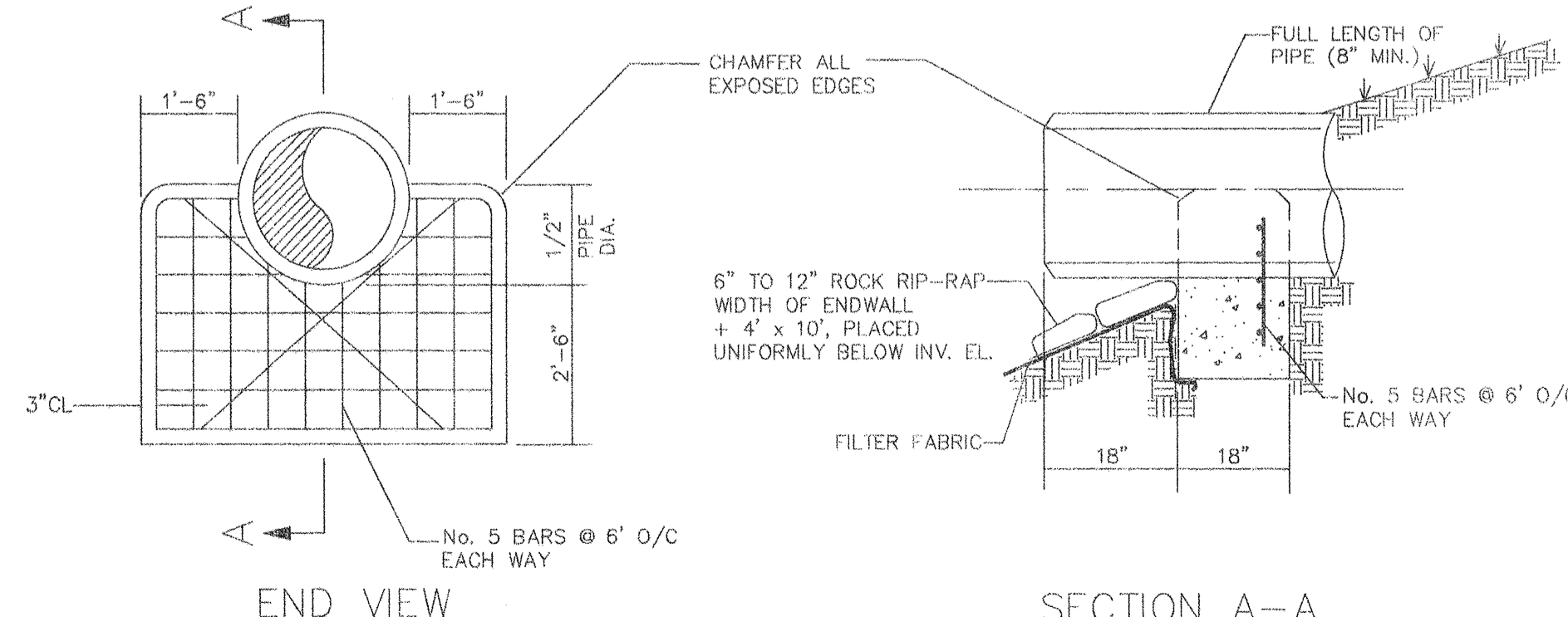
YARD DRAIN
N.T.S.



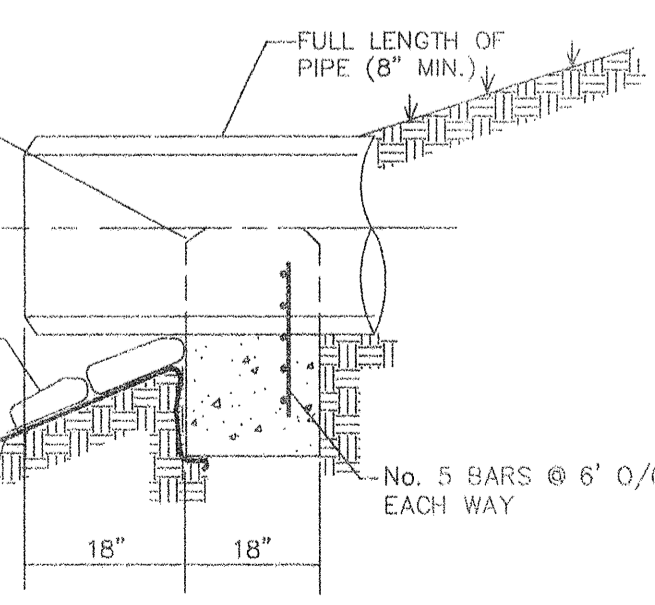
VALLEY CUTTER INLET DETAIL
(FOR USE WITH 2\"/>



CURB INLET (TYPE F) DETAIL
N.T.S.



ENDWALL DETAIL
N.T.S.



SECTION A-A
N.T.S.

I, the undersigned Professional Engineer, hereby certify that to the best of my knowledge and belief, and based on the certification provided by the surveyor of record, the improvements depicted hereon have been constructed in substantial compliance with the approved plans. The undersigned engineer is not certifying the accuracy of the drawing prepared by the surveyor.

Engineer's Signature
Date 2/1/07

DATE: 2/1/07
REVISIONS:
1. 02/12/07 REVISION PER CHINERS COMMENTS
2. 02/12/07 ISSUED FOR CONSTRUCTION

POSITANO
Project No. 03022440
LONGBOAT KEY, FLORIDA
SECTION 08, TOWNSHIP 35 S, RANGE 16 E.

SCALE: AS SHOWN
DATE FILE: S-002
S-002-DETAILS
C109

DESIGN BY: PLF
DRAWN BY: PLF
CHECKED BY: RVE
DATE: 02-12-07

CONSULTEN
CONSULTEN
DEVELOPMENT SERVICES, INC.
CIVIL ENGINEERING-PLANNING-TRANSPORTATION-CONSTRUCTION/ENVIRONMENTAL
9015 Town Center Parkway, Suite 112, Sarasota, Florida 34237, Phone: (941) 557-4822, Fax: (941) 557-4821