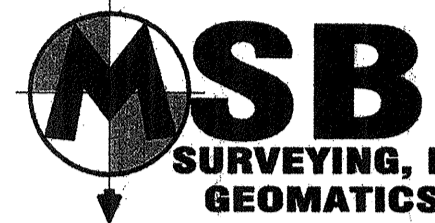


RECORD SURVEY



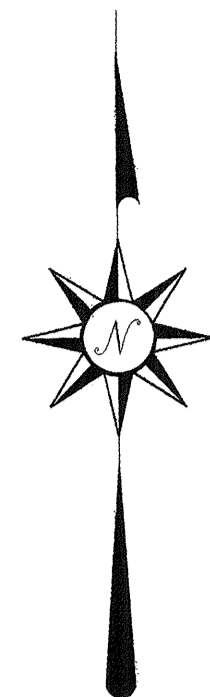
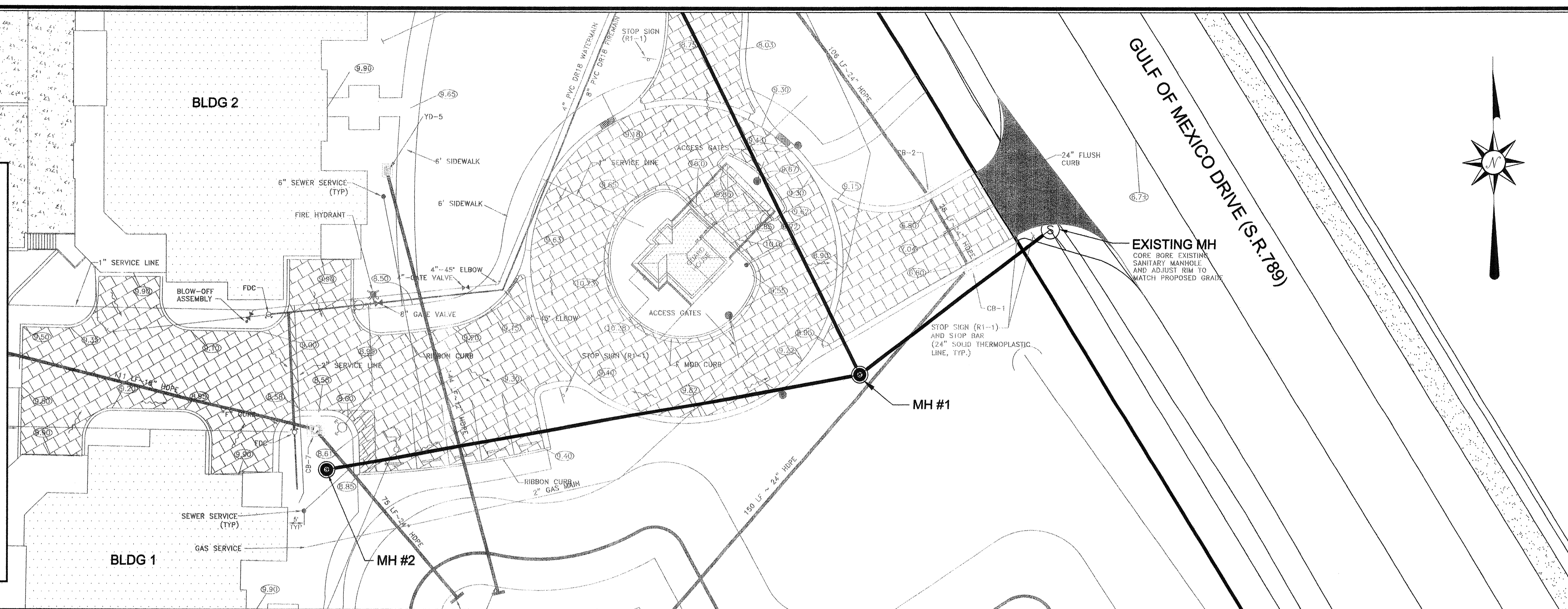
40 SARASOTA CENTER BOULEVARD, UNIT H
SARASOTA, FLORIDA 34240
PHONE NO.: (941) 341-9985
CERTIFICATE OF AUTHORIZATION NO. L.B. 7044

REPORT OF SURVEY

ACCURACY: VERTICAL: FIELD-MEASURED CONTROL FOR VERTICAL DATA SHOWN HEREON ARE BASED ON A LEVEL LOOP. CLOSURE IN FEET EXCEEDS A STANDARD OF PLUS OR MINUS 0.05 TIMES THE SQUARE ROOT OF THE DISTANCE IN FEET.

DATA SOURCE:
1. CONSTRUCTION PLANS IN AUTOCAD FORMAT FURNISHED BY CONSUL-TECH DEVELOPMENT SERVICES INC.
2. BOUNDARY SURVEY BY MSB SURVEYING INC.
3. NO OTHER INFORMATION WAS RESEARCHED OR FURNISHED.

NOTES:
1. THIS MAP REPRESENTS A UTILITY RECORD SURVEY RELATIVE TO THE CONSTRUCTION PLAN FOR POSITANO, BY CONSUL-TECH DEVELOPMENT SERVICES, INC. RECORD DATA IS OVERLAID ONTO CONSTRUCTION PLANS IN AUTOCAD FORMAT. ALL GRAY SCALE DATA IS FOR REFERENCE ONLY & IS NOT A PART OF THIS SURVEY.
2. ELEVATIONS SHOWN HEREON ARE IN FEET AND DECIMALS REFERENCED TO NGVD 1929 AND ARE BASED ON DNR (SURVEY MARK) MONUMENT R-62A (RESET 1985) PUBLISHED ELEVATION=8.82 N.G.V.D. 1929.
3. UTILITY RECORD SURVEY IS NOT VALID UNLESS ALL SHEETS AS DICTATED BY THE COVER SHEET ARE PRESENT.

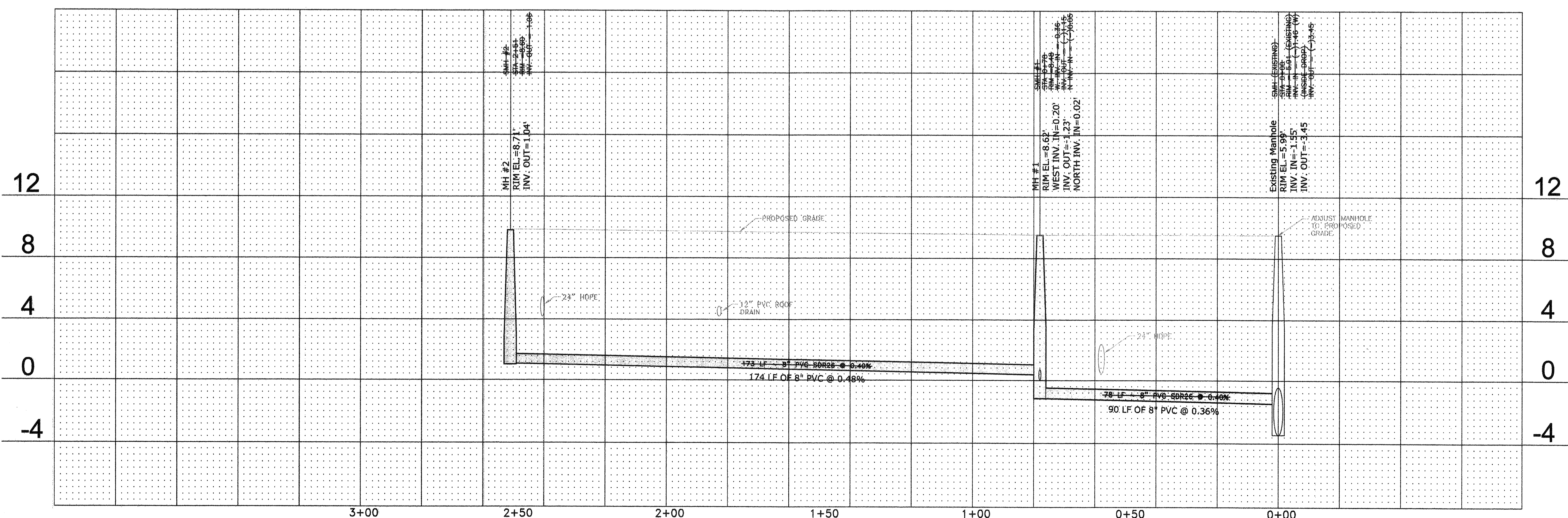


NOTE:
1. ALL WATERMAIN FITTINGS AND FIRE LINE FITTINGS ARE TO BE RESTRAINED.
2. UTILITIES SHALL BE DEFLECTED AS NEEDED TO MEET CLEARANCE REQUIREMENTS AND TO AVOID CONFLICTS SHOWN.

DRAINAGE STRUCTURE TABLE

CB-1 CURB INLET (TYPE F) 48"X36" INSIDE GRATE ELEV.=6.80 BOTTOM ELEV.=0.57	CB-7 (TYPE F) 48"X36" INSIDE GRATE INLET GRATE ELEV.=8.55 BOTTOM ELEV.=4.20	YD-4 YARD DRAIN INLET GRATE ELEV.=9.00 INV. ELEV.=5.10
CB-2 CURB INLET (TYPE F) 48"X36" INSIDE GRATE ELEV.=6.80 BOTTOM ELEV.=0.73	YD-3 YARD DRAIN INLET GRATE ELEV.=8.80 BOTTOM ELEV.=5.30	YD-5 YARD DRAIN INLET GRATE ELEV.=9.50 INV. ELEV.=6.00

SCALE: HORIZ. 1"=20'
VERT. 1"=4'



"I, the undersigned Professional Engineer, hereby certify that the best of my knowledge and belief, and based on the certification provided by the surveyor of record, the improvements depicted hereon have been constructed in substantial compliance with the approved plans. The undersigned engineer is not certifying the accuracy of the drawing prepared by the surveyor."

Engineer's Signature
Date 2/2/07

REVISIONS:
DATE REVISIONS
26/12/04 REVISED PER OWNERS COMMENTS
25/12/04 ISSUED FOR CONSTRUCTION

POSITANO
Project No. 0320440
LONGBOAT KEY, FLORIDA
SECTION 06, TOWNSHIP 35 S, RANGE 16 E

PLAN & PROFILE

CONSULTANT
CONSULT-TECH DEVELOPMENT SERVICES, INC.
CIVIL ENGINEERING - PLANNING - TRANSPORTATION - CONSTRUCTION MANAGEMENT - ENVIRONMENTAL
9015 Tom-Clear Parkway, Suite 112, Sarasota, Florida 34236 Phone: 941-557-8822 Fax: 941-557-8821

SCALE: AS SHOWN
DATE: S-002
S-002-site-04-10-03
C112