

## RECORD SURVEY

**40 SARASOTA CENTER BOULEVARD, UNIT H**  
**SARASOTA, FLORIDA 34240**  
**PHONE NO.: (941) 341-9935**  
**CERTIFICATE OF AUTHORIZATION NO. L.B. 7044**

**NOTE:**

- ALL WATERMAIN FITTINGS AND FIRE LINE FITTINGS ARE TO BE RESTRAINED.
- UTILITIES SHALL BE DEFLECTED AS NEEDED TO MEET CLEARANCE REQUIREMENTS AND TO AVOID CONFLICTS SHOWN.

DRAINAGE STRUCTURE TABLE

CB-1 CURB INLET (TYPE F) GRATE ELEV.=6.80 BOTTOM ELEV.=0.57	CB-3 CURB INLET (VG) GRATE ELEV.=6.00 BOTTOM ELEV.=1.26	CB-5 CURB INLET (VG) GRATE ELEV.=6.00 BOTTOM ELEV.=3.03
CB-2 CURB INLET (TYPE F) GRATE ELEV.=6.80 BOTTOM ELEV.=0.73	CB-4 CURB INLET (VG) GRATE ELEV.=6.00 BOTTOM ELEV.=2.02	

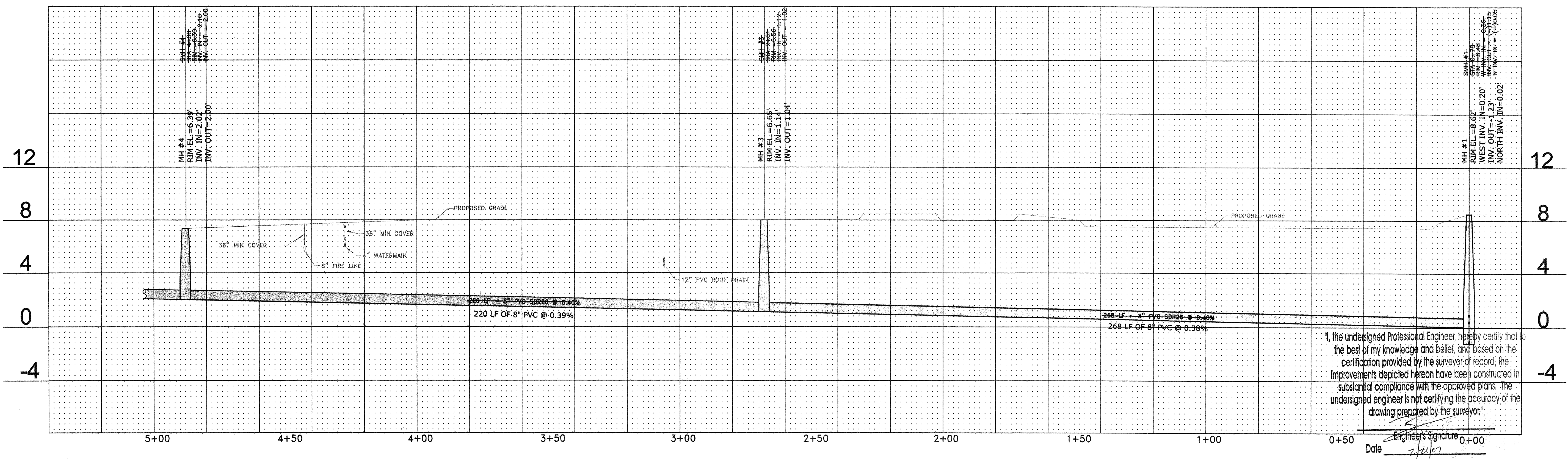
**REPORT OF SURVEY**

**ACCURACY:**  
 VERTICAL: FIELD-MEASURED CONTROL FOR VERTICAL DATA SHOWN HEREON ARE BASED ON A LEVEL LOOP CLOSURE IN FEET EXCEEDS A STANDARD OF PLUS OR MINUS 0.05 TIMES THE SQUARE ROOT OF THE DISTANCE IN MILES.

**DATA SOURCE:**  
 1. CONSTRUCTION PLANS IN AUTOCAD FORMAT FURNISHED BY CONSUL-TECH DEVELOPMENT SERVICES INC.  
 2. BOUNDARY SURVEY BY MSB SURVEYING INC.  
 3. NO OTHER INFORMATION WAS RESEARCHED OR FURNISHED.

**NOTES:**  
 1. THIS MAP REPRESENTS A UTILITY RECORD SURVEY RELATIVE TO THE CONSTRUCTION PLAN FOR POSITANO, BY CONSUL-TECH DEVELOPMENT SERVICES, INC. RECORD DATA IS OVERLAID ONTO CONSTRUCTION PLANS IN AUTOCAD FORMAT. ALL GRAY SCALE DATA IS FOR REFERENCE ONLY & IS NOT A PART OF THIS SURVEY.  
 2. ELEVATIONS SHOWN HEREON ARE IN FEET AND DECIMALS REFERENCED TO NGVD 1929 AND ARE BASED ON DNR (SURVEY MARK) MONUMENT R-62A (RESET 1985) PUBLISHED ELEVATION=8.82 N.G.V.D. 1929.  
 3. UTILITY RECORD SURVEY IS NOT VALID UNLESS ALL SHEETS AS DICTATED BY THE COVER SHEET ARE PRESENT.

SCALE: HORIZ. 1"=20'  
 VERT. 1"=4'



"I, the undersigned Professional Engineer, hereby certify that to the best of my knowledge and belief, and based on the certification provided by the surveyor of record, the improvements depicted hereon have been constructed in substantial compliance with the approved plans. The undersigned engineer is not certifying the accuracy of the drawing prepared by the surveyor."

Engineer's Signature: \_\_\_\_\_  
 Date: 7/21/07

REVISIONS:  
 DATE: 06/14/04  
 REASON: REVISED PER DIMERS COMMENTS  
 DATE: 08/14/04  
 REASON: REVISED FOR CONSTRUCTION

**POSITANO**  
 Project No. 0302040  
 LORNGOAT KEY, FLORIDA  
 SECTION 06 TOWNSHIP 35 S, RANGE 16 E.

**PLAN & PROFILE**

DESIGNED BY: \_\_\_\_\_  
 DRAWN BY: \_\_\_\_\_  
 CHECKED BY: \_\_\_\_\_  
 DATE: \_\_\_\_\_

SCALE: 1" = 40'  
 CASE FILE: S-002  
 SUB NO: S-002-site-04-10-03  
 DATE: 7/21/07

**C113**