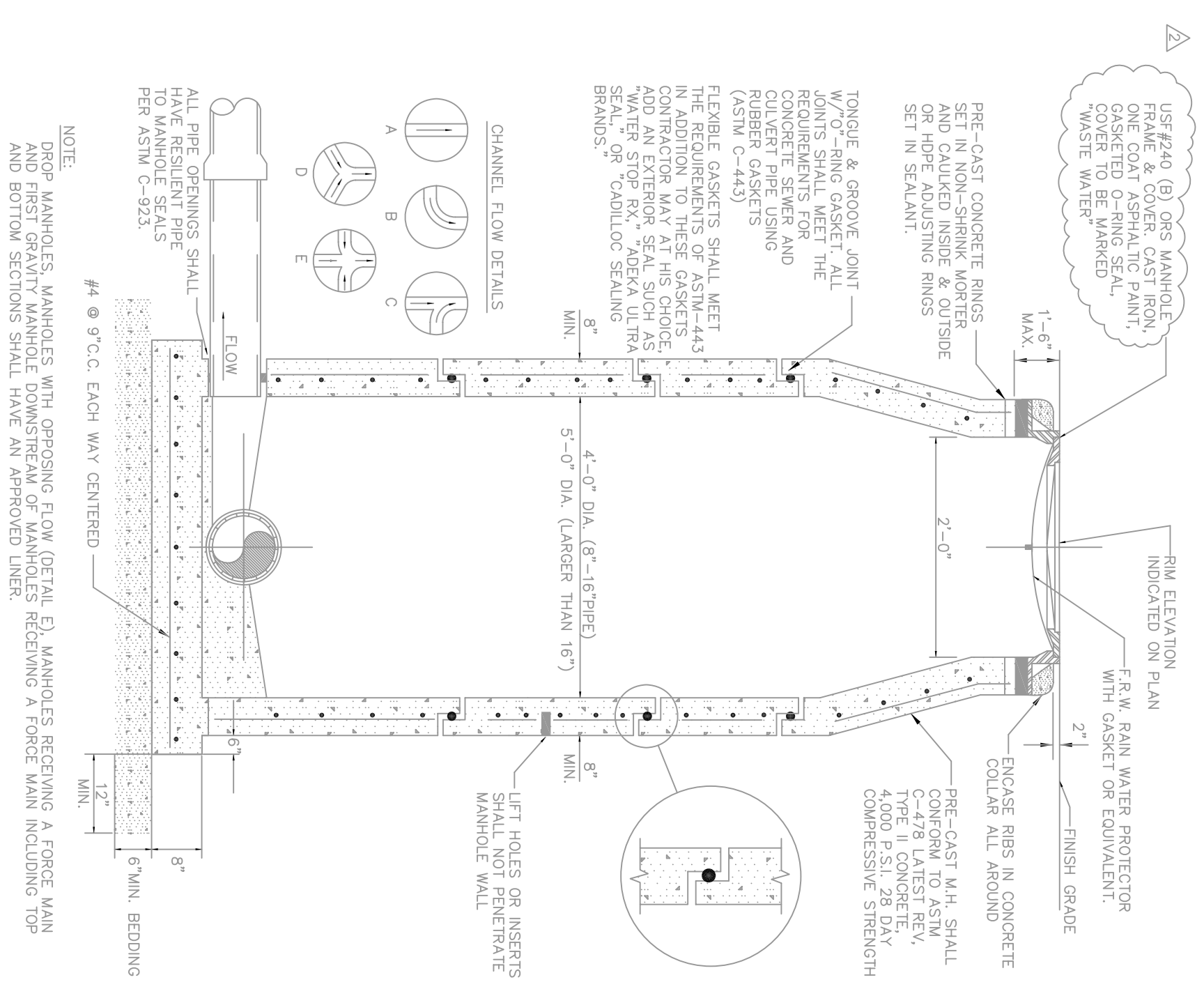
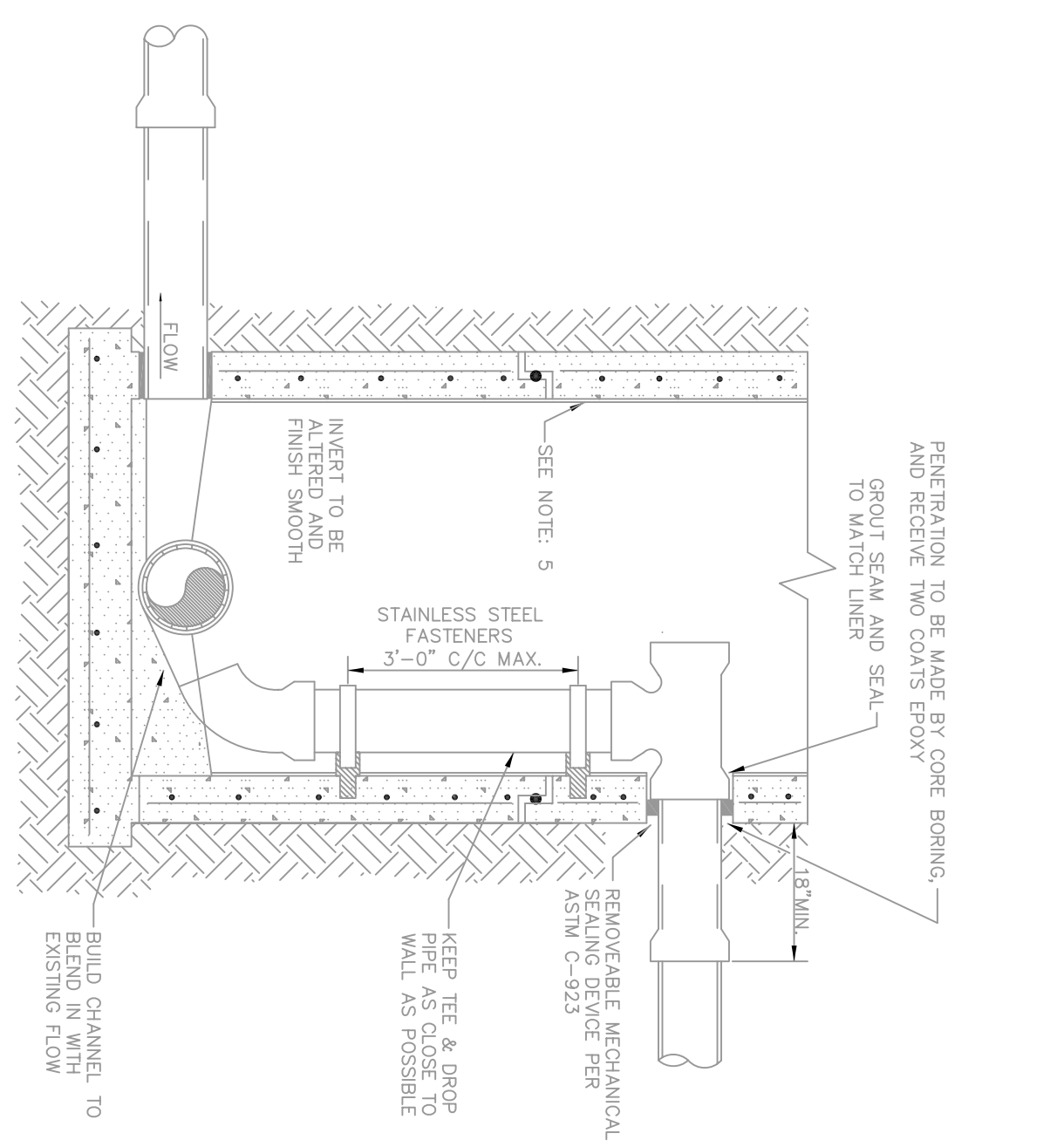


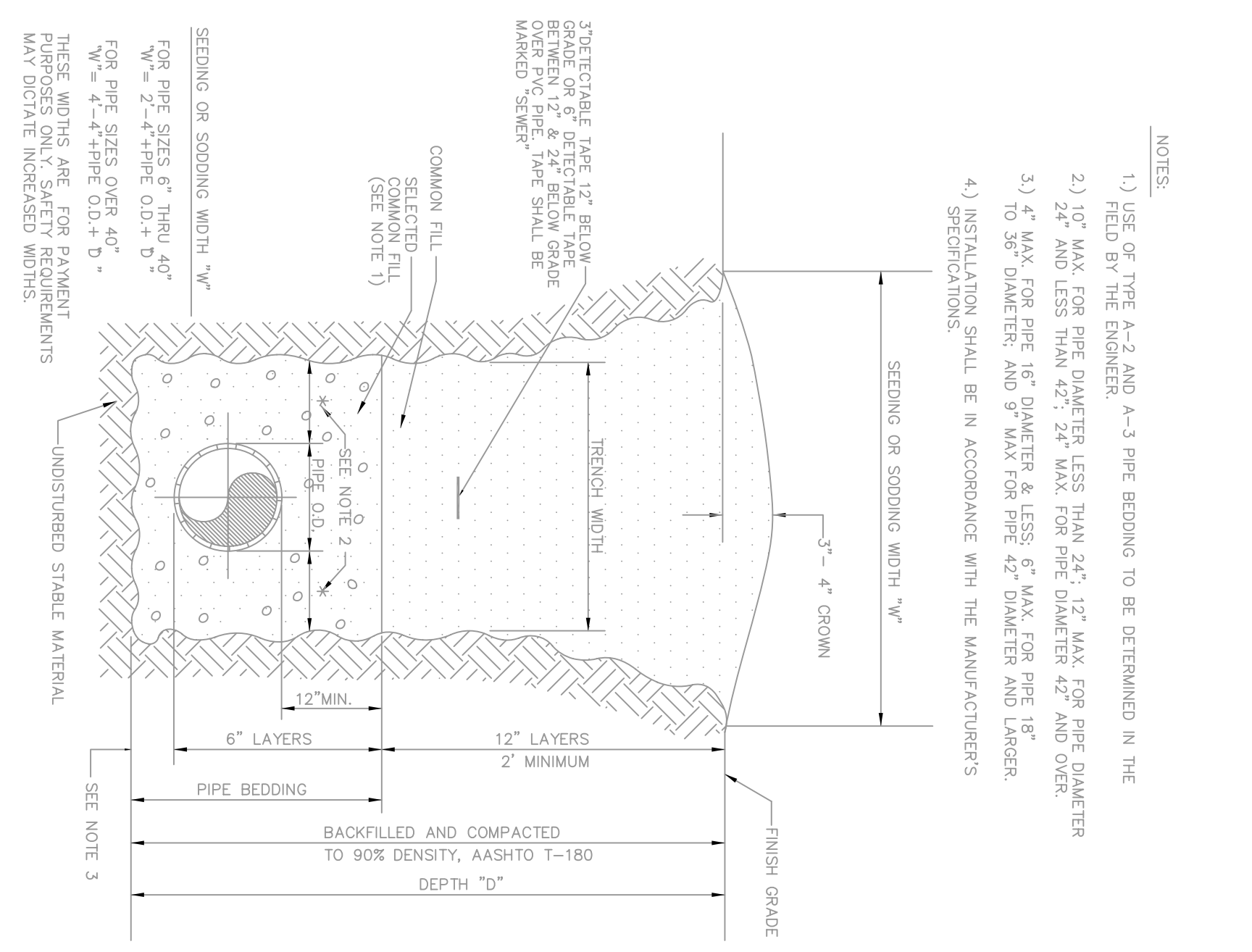
RECORD SURVEY



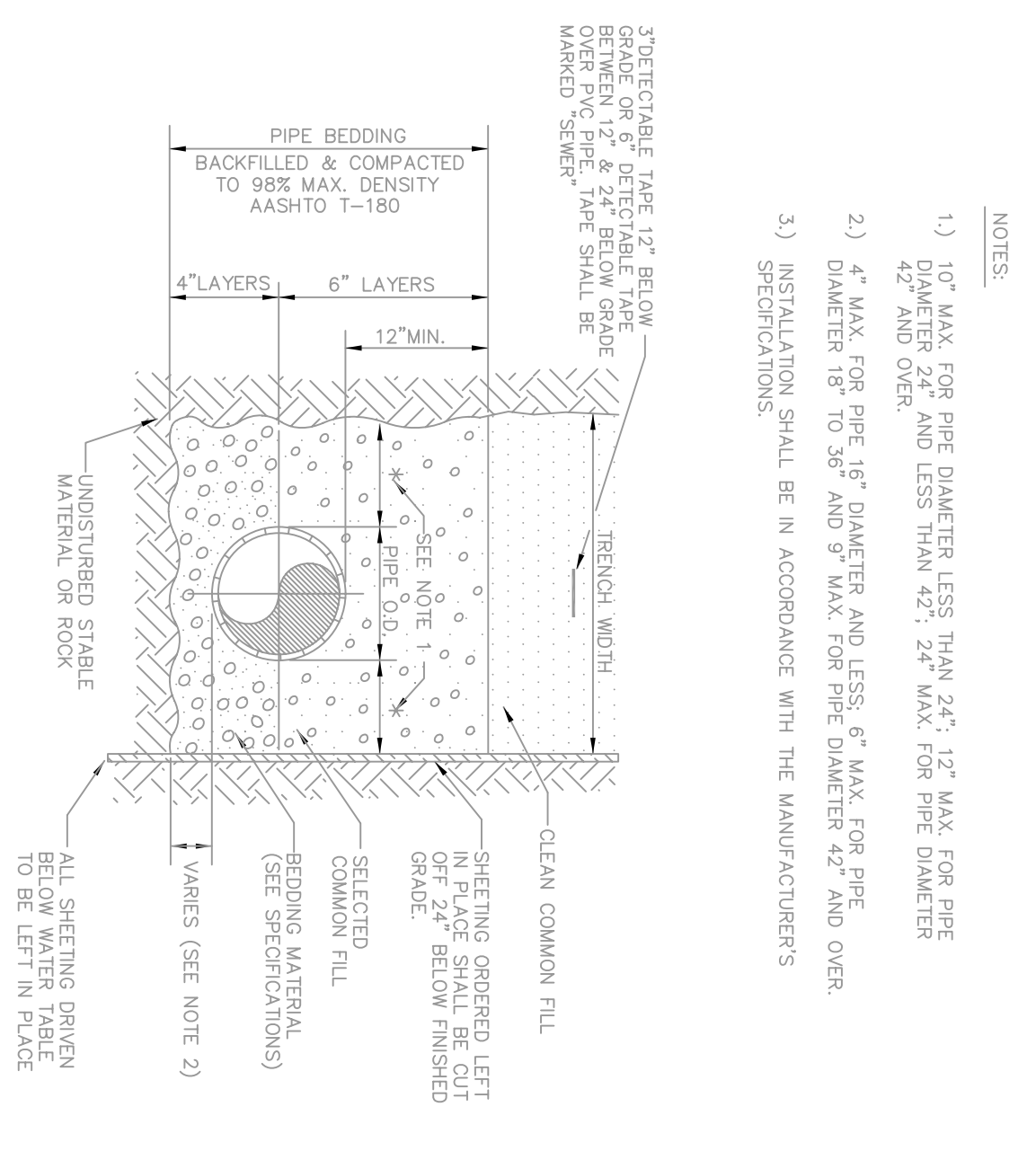
STANDARD PRE-CAST
SANITARY SEWER MANHOLE
FOR UNDISTURBED FLOW



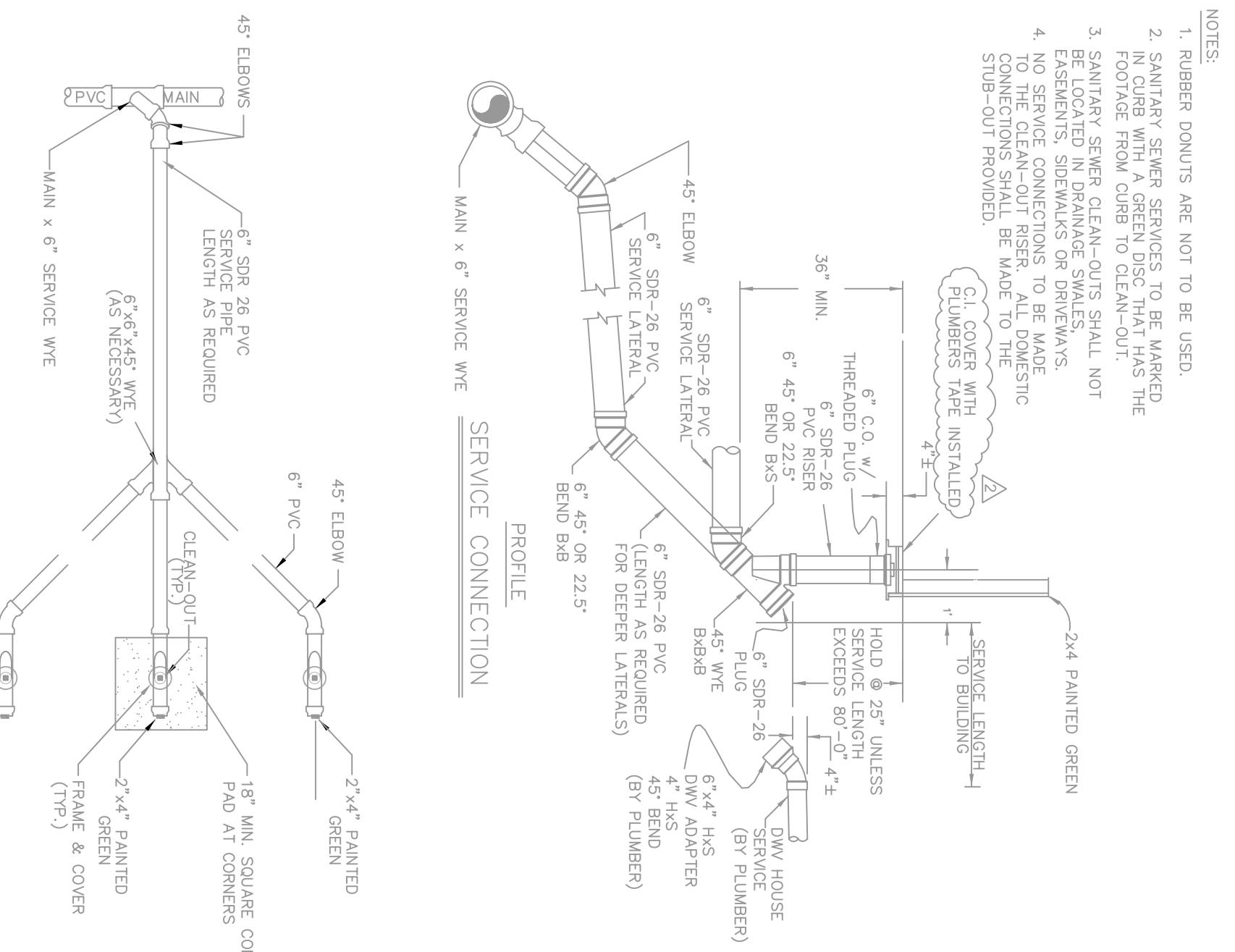
GRAVITY INSIDE-DROP
FOR RETROFIT OF
EXISTING MANHOLE



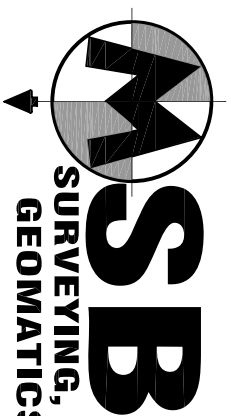
TRENCH DETAIL
UNIMPROVED SURFACE
TYPE A-1 PIPE BEDDING



TRENCH DETAIL
TYPE A-2 PIPE BEDDING



SINGLE AND DOUBLE
SERVICE CONNECTION
DETAILS



MSB
SURVEYING, INC.
CERTIFICATE OF AUTHORIZATION NO. LB. 7044

40 SARASOTA CENTER BOULEVARD, UNIT H
SARASOTA, FLORIDA 34240
PHONE NO.: (941) 341-9935

REPORT OF SURVEY


ACCURACY: FIELD MEASURED CONTROL FOR VERTICAL DATA SHOWN HEREON ARE BASED ON A LEVEL CORNER CLOSURE IN FEET EXCEEDS A STANDARD OF PLUS OR MINUS 0.05 TIMES THE SQUARE ROOT OF THE DISTANCE IN MILES.

DATA SOURCE:

1. CONSTRUCTION PLANS IN AUTOCAD FORMAT FURNISHED BY CONSULT-TECH DEVELOPMENT SERVICES INC SURVEY BY NSB SURVEYING INC.
2. NO OTHER INFORMATION WAS RESEARCHED OR FURNISHED.

NOTES:

1. MAP REPRESENTS A UTILITY RECORD SURVEY RELATIVE TO THE CONSTRUCTION PLAN FOR POSTING, BY CONSULT-TECH DEVELOPMENT SERVICES, INC. RECORD DATA IS OVERLAIN ONTO CONSTRUCTION PLANS IN AUTOCAD FORMAT. ALL GRAY SCALE DATA IS FOR 2. ELEVATIONS SHOWN HEREON ARE IN FEET AND DECIMALS REFERRED TO NOV. 1929 ELEVATION-BASED NAD 83 (NAD 83) MONUMENT R-62A (RESET 1985) PUBLISHED BY THE NATIONAL BUREAU OF SURVEYING. THIS DATA IS NOT VALID UNLESS ALL SHEETS AS DICTATED BY THE COVER SHEET ARE PRESENT.

SCALE: AS SHOWN	DESIGN BY: R/JF DRAWN BY: R/JF CHECKED BY: R/WK DATE: 06/13/03	 DEVELOPMENT SERVICES, INC. CIVIL ENGINEERING - PLANNING - TRANSPORTATION - CONSTRUCTION MANAGEMENT - ENVIRONMENTAL 9015 Town Center Parkway, Suite 112, Sarasota Florida 34208, Phone: 941-907-8822, Fax: 941-907-8821 <small>NOTE: The information on CONSULT-TECH DEVELOPMENT SERVICES, INC. has been prepared or provided as the responsibility of the client. We do not warrant the accuracy, reliability, or completeness of the information. We do not warrant the accuracy, reliability, or completeness of the information. We do not warrant the accuracy, reliability, or completeness of the information.</small>	DATE 9/22/03 9/30/03 06/14/04 06/14/04	REVISIONS: REVISE PER TOWN OF LONGBOAT KEY PUBLIC WORKS REVIEW REVISE PER MANATEE COUNTY UTILITY REVIEW (DCP) REVISED PER OWNERS COMMENTS ISSUED FOR CONSTRUCTION
CAD FILE: S-002	DWG NO: S-002-DETAILS		POSITANO Project No. 03020440 LONGBOAT KEY, FLORIDA SECTION 36, TOWNSHIP 35 S., RANGE 16 E. SANITARY DETAILS	