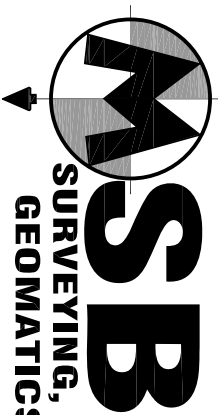


RECORD SURVEY



40 SARASOTA CENTER BOULEVARD, UNIT H
SARASOTA, FLORIDA 34240
PHONE NO.: (941) 341-8935
CERTIFICATE OF AUTHORIZATION NO. L.B. 7044

REPORT OF SURVEY

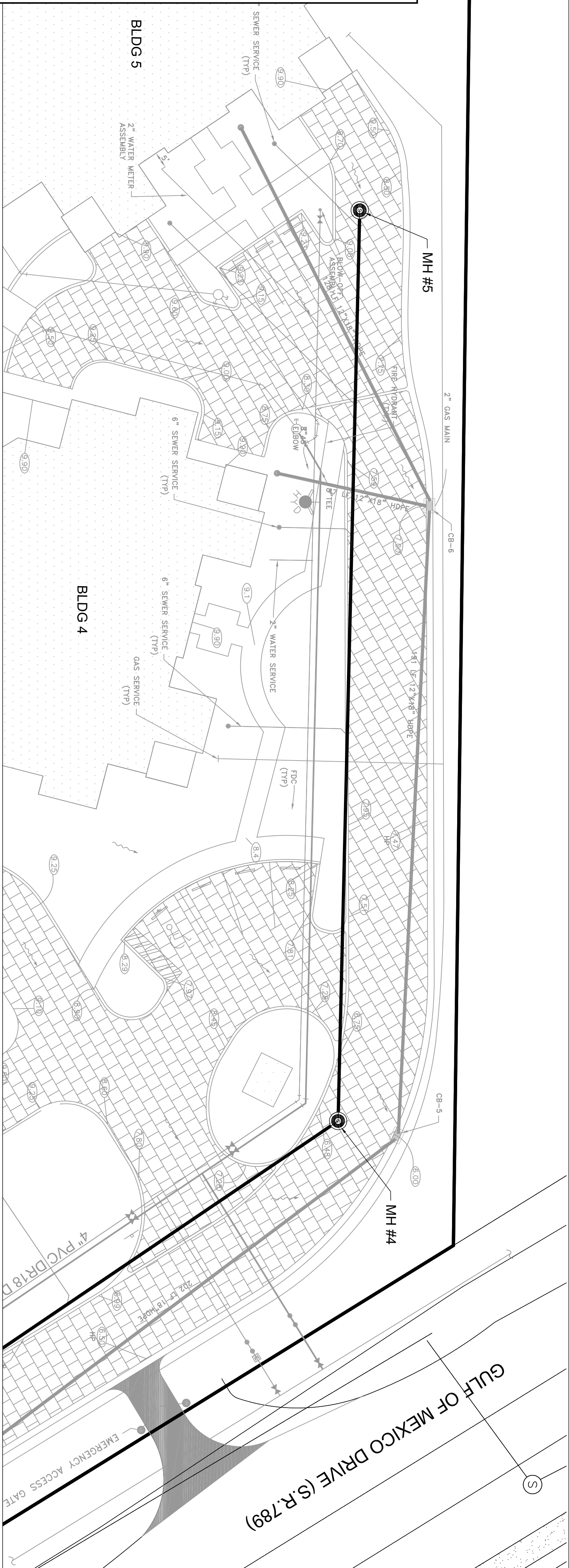
ACCURACY: FIELD MEASURED CONTROL FOR VERTICAL DATA SHOWN HEREON ARE BASED ON A LEVEL LOOP CLOSURE IN FEET EXCEEDS A STANDARD OF PLUS OR MINUS 0.05 TIMES THE SQUARE ROOT OF THE DISTANCE IN FEET.

DATA SOURCE:

1. CONSTRUCTION PLANS IN AUTOCAD FORMAT FURNISHED BY CONSULT-TECH DEVELOPMENT SERVICES, INC. SURVEY BY MSB SURVEYING, INC.
2. NO OTHER INFORMATION WAS RESEARCHED OR FURNISHED.

NOTES:

1. THIS MAP REPRESENTS A UTILITY RECORD SURVEY RELATIVE TO THE CONSTRUCTION PLAN FOR POSITANO, BY CONSULT-TECH DEVELOPMENT SERVICES, INC. RECORD DATA IS OVERRIDEN ONTO CONSTRUCTION PLANS IN AUTOCAD FORMAT. ALL GRAY SCALE DATA IS FOR REFERENCE ONLY. ALL DIMENSIONS ARE IN FEET AND DECIMALS REFERENCED TO NAD 1929 ELEVATION. BASED ON DNR (SURVEY MARK) MONUMENT R-624 (RESET 1989) PUBLISHED ELEVATION OF 8.22' AT STA. 1+29'. ALL DIMENSIONS AND ELEVATIONS ARE AS SHOWN ON THIS SHEET UNLESS OTHERWISE NOTED. THIS SURVEY IS NOT VALID UNLESS ALL SHEETS AS DESIGNATED BY THE COVER SHEET ARE PRESENT.



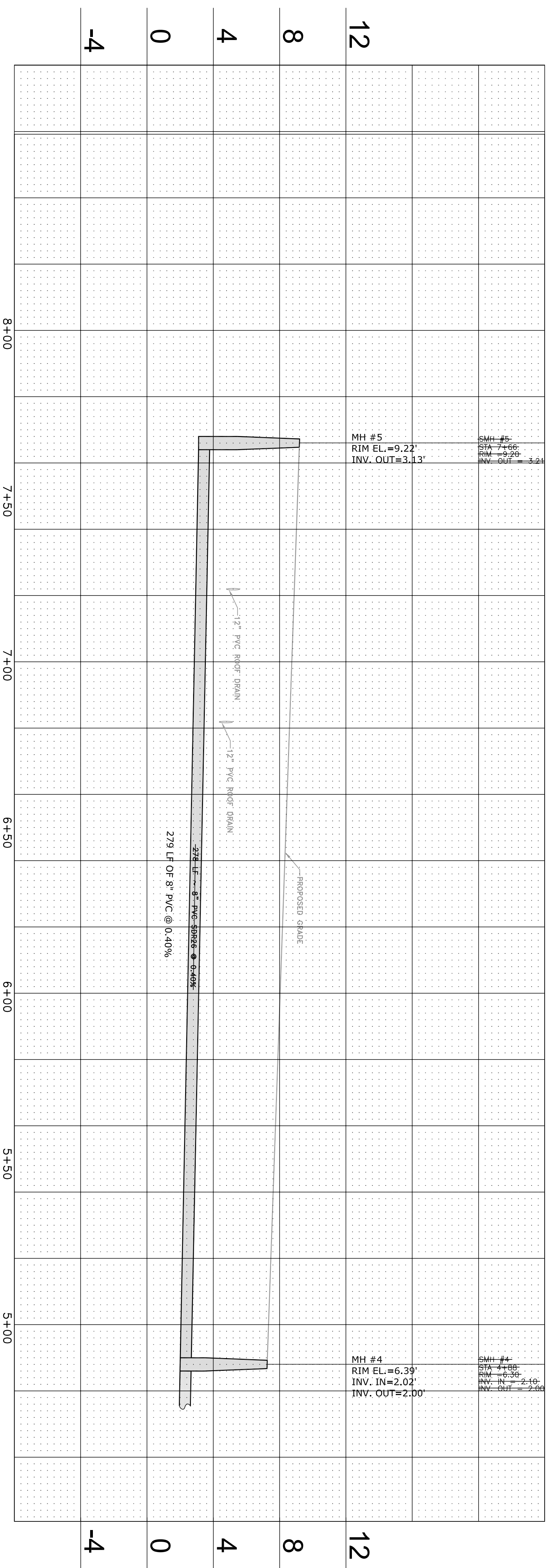
NOTE:
1. ALL WATERMAIN FITTINGS AND FIRE LINE FITTINGS ARE TO BE RESTRAINED.
2. UTILITIES SHALL BE DEFLECTED AS NEEDED TO MEET CLEARANCE REQUIREMENTS AND TO AVOID CONFLICTS SHOWN.

DRAINAGE STRUCTURE TABLE

CB-5	CURB INLET (VG)	CB-6	CURB INLET (VG)
GRATE ELEV.=6.00	BOTTOM ELEV.=3.03	GRATE ELEV.=7.0	BOTTOM ELEV.=4.01

NOTE:
ALL SERVICES TO BUILDING TO HAVE MINIMUM 24" COVER AT BUILDING.

SCALE: HORIZ. 1"=20'
VERT. 1"=4'



SCALE: 1" = 40'
CAD FILE: S-002
DWG NO: S-002-site-04-10-03
C114

DESIGN BY:
DRAWN BY:
CHECKED BY:
DATE:

ConsulTech
DEVELOPMENT SERVICES, INC.
CIVIL ENGINEERING - PLANNING - TRANSPORTATION - CONSTRUCTION MANAGEMENT - ENVIRONMENTAL
9015 Town Center Parkway, Suite 112, Sarasota Florida 34208 Phone: 941-907-8822 Fax: 941-907-8821
NOTE: The undersigned and CONSULT-TECH DEVELOPMENT SERVICES, INC. make no representation or guarantee as to the distribution of the information reflected herein pertaining to assessments, right of way, vertical clearance, relocation, agreements or other matters of record. The information is intended for use only by those persons shown to be the intended users. CONSULT-TECH DEVELOPMENT SERVICES, INC. does not warrant the public records to anyone. All rights are reserved.
NOTE: This document is the property of CONSULT-TECH DEVELOPMENT SERVICES, INC. and shall not be reproduced in whole or in part without the written consent of CONSULT-TECH DEVELOPMENT SERVICES, INC.

POSITANO
Project No. 03020440
LONGBOAT KEY, FLORIDA
SECTION 36, TOWNSHIP 35 S., RANGE 16 E.
PLAN & PROFILE

DATE	REVISIONS:
06/14/04	REVISED PER OWNERS COMMENTS
06/14/04	ISSUED FOR CONSTRUCTION