

NOTE:
 1. ALL WATERMAIN FITTINGS AND FIRE LINE FITTINGS ARE TO BE RESTRAINED.
 2. UTILITIES SHALL BE DEFLECTED AS NEEDED TO MEET CLEARANCE REQUIREMENTS AND TO AVOID CONFLICTS SHOWN.

DRAINAGE STRUCTURE TABLE

Structure	Type	Grate Elev.	Bottom Elev.
CB-1	CURB INLET (TYPE F)	6.80	0.37
CB-2	CURB INLET (TYPE F)	8.30	0.73
CB-3	CURB INLET (V/G)	6.00	1.26
CB-4	CURB INLET (V/G)	6.00	2.02
CB-5	CURB INLET (V/G)	6.00	3.03

RECORD SURVEY

MSB
 SURVEYING, INC. CERTIFICATE OF AUTHORIZATION NO. L.B. 7044

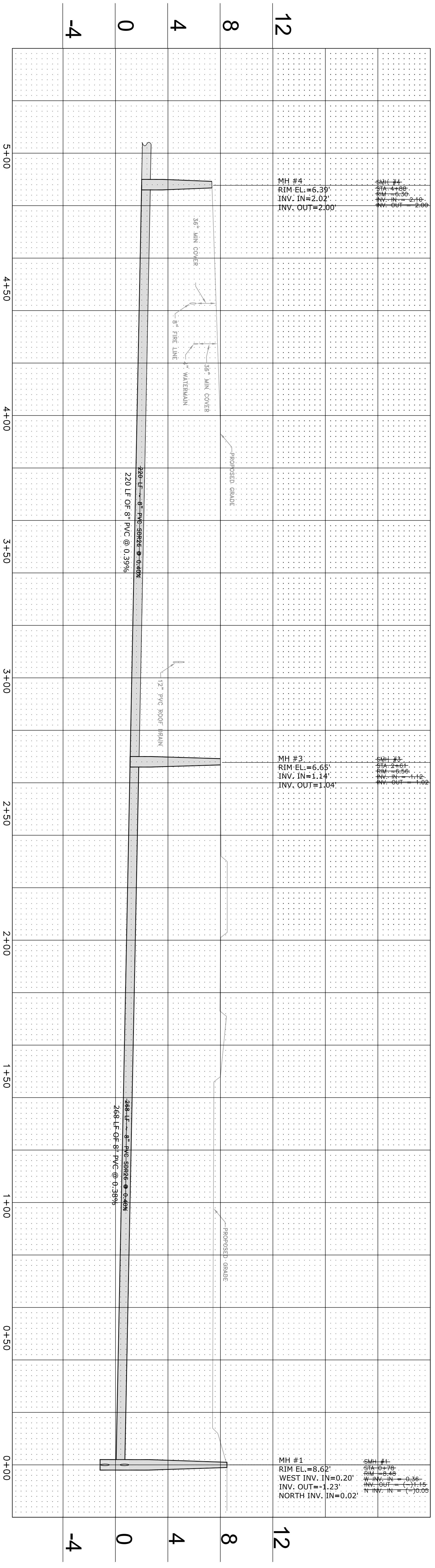
40 SARASOTA CENTER BOULEVARD, UNIT H
 SARASOTA, FLORIDA 34240
 PHONE NO.: (941) 341-9335

REPORT OF SURVEY

ACCURACY:
 VERTICAL: FIELD-MEASURED CONTROL FOR VERTICAL DATA SHOWN HEREON ARE BASED ON A LEVEL LOOP CLOSURE IN FEET EXCEEDS A STANDARD OF PLUS OR MINUS 0.05 TIMES THE SQUARE ROOT OF THE DISTANCE IN FEET.

DATA SOURCE:
 SEWER CONSTRUCTION PLANS IN AUTOCAD FORMAT FURNISHED BY CONSUL-TECH DEVELOPMENT SERVICES, INC.

NOTES:
 1. THIS MAP REPRESENTS A UTILITY RECORD SURVEY RELATIVE TO THE CONSTRUCTION OVERLAP FOR ONE (1) CONSTRUCTION PROJECT. THE RECORD DATA IS FOR REFERENCE ONLY & IS NOT A PART OF THIS SURVEY.
 2. ELEVATIONS SHOWN HEREON ARE IN FEET AND DECIMALS REFERENCED TO MGD 1929 ELEVATION=882 M.C. AND M.S. (NAD 83) MONUMENT R-62A (RESET 1983) PUBLISHED BY THE U.S. GEOLOGICAL SURVEY.
 3. UTILITY RECORD SURVEY IS NOT VALID UNLESS ALL SHEETS AS DICTATED BY THE COVER SHEET ARE PRESENT.



SCALE: 1" = 40'
 CAD FILE: S-002
 DWG NO: S-002-site-04-10-03
 C113

ConsulTech
 DEVELOPMENT SERVICES, INC.
 CIVIL ENGINEERING - PLANNING - TRANSPORTATION - CONSTRUCTION MANAGEMENT - ENVIRONMENTAL
 9015 Town Center Parkway, Suite 112, Sarasota Florida 34208, Phone: 941-907-8822, Fax: 941-907-8821

NOTE: The undersigned and CONSULT-TECH DEVELOPMENT SERVICES, INC. make no representation or guarantee as to the completeness of the information reflected herein pertaining to easements, right of way, utility lines, encroachments, or other matters of record. The information is intended to reflect the current conditions shown on the referenced plans. CONSULT-TECH DEVELOPMENT SERVICES, INC. does not warrant the accuracy of the information reflected herein. This document is the property of CONSULT-TECH DEVELOPMENT SERVICES, INC. and shall not be reproduced in whole or in part without the written consent of CONSULT-TECH DEVELOPMENT SERVICES, INC.

POSITANO
 Project No. 03020440
 LONGBOAT KEY, FLORIDA
 SECTION 36, TOWNSHIP 35 S., RANGE 16 E.

PLAN & PROFILE

DATE	REVISIONS:
06/14/04	REVISED PER OWNERS COMMENTS
06/14/04	ISSUED FOR CONSTRUCTION