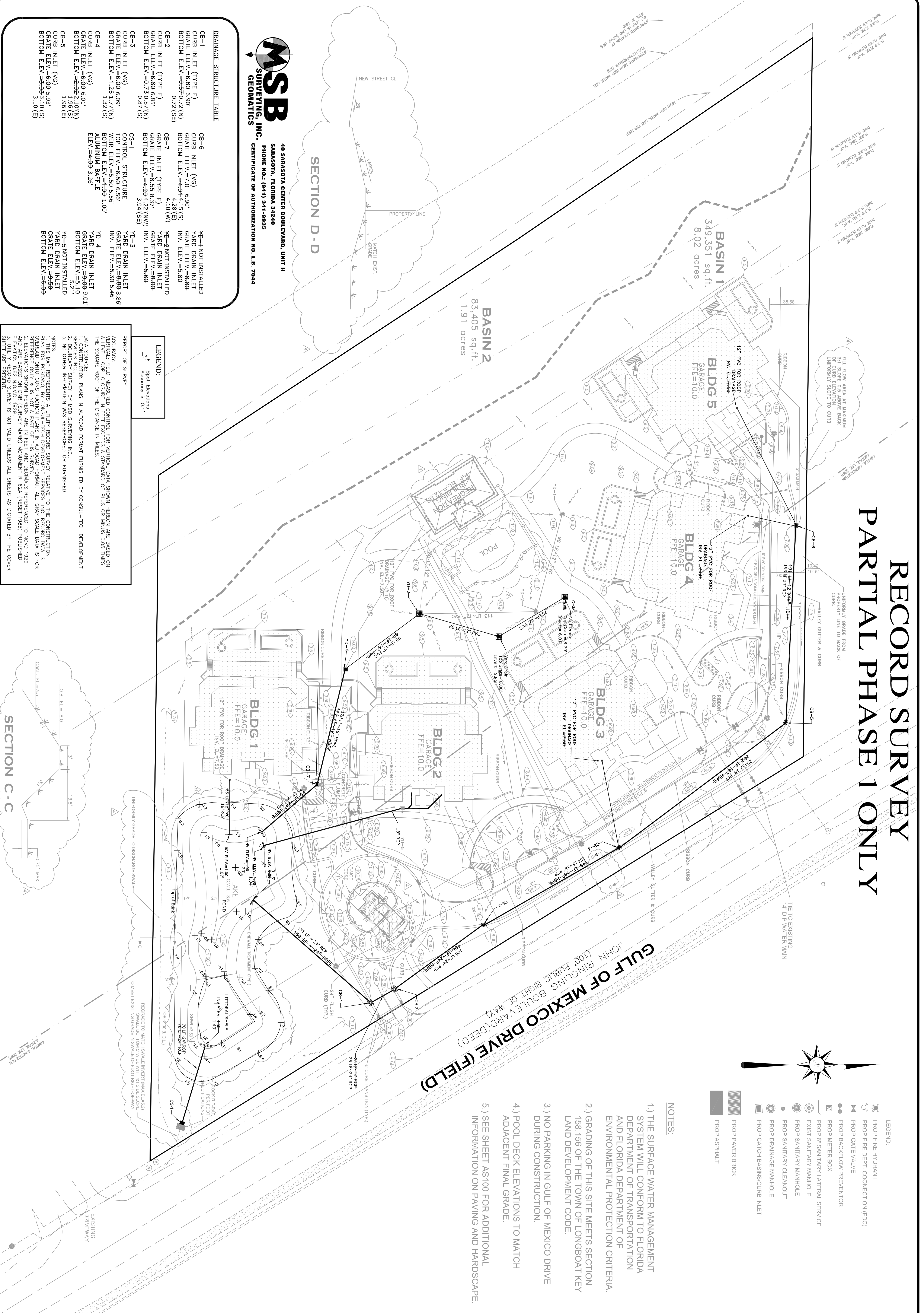


# RECORD SURVEY PARTIAL PHASE 1 ONLY



- LEGEND:**
- PROP FIRE HYDRANT
  - PROP FIRE DEPT. CONNECTION (FPD)
  - PROP GATE VALVE
  - PROP BACKFLOW PREVENTOR
  - 
  - PROP SANITARY MANHOLE
  - PROP SANITARY CLEANOUT
  - PROP DRAINAGE MANHOLE
  - PROP CATCH BASINS/CURB INLET
  - PROP PAVER BRICK
  - PROP ASPHALT

- NOTES:**
- 1.) THE SURFACE WATER MANAGEMENT SYSTEM WILL CONFORM TO FLORIDA DEPARTMENT OF TRANSPORTATION AND FLORIDA DEPARTMENT OF ENVIRONMENTAL PROTECTION CRITERIA.
  - 2.) GRADING OF THIS SITE MEETS SECTION 158.156 OF THE TOWN OF LONGBOAT KEY LAND DEVELOPMENT CODE.
  - 3.) NO PARKING IN GULF OF MEXICO DRIVE DURING CONSTRUCTION.
  - 4.) POOL DECK ELEVATIONS TO MATCH ADJACENT FINAL GRADE.
  - 5.) SEE SHEET AS100 FOR ADDITIONAL INFORMATION ON PAVING AND HARDSCAPE.

**MSB SURVEYING, INC. GEOMATICS**  
 40 SARASOTA CENTER BOULEVARD, UNIT H  
 SARASOTA, FLORIDA 34240  
 PHONE NO.: (941) 341-9935  
 CERTIFICATE OF AUTHORIZATION NO. L.B. 7044

**SECTION D-D**

NEW STREET CL  
 VARIES  
 PROPERTY LINE  
 MATCH EXIST.  
 2%  
 1/4\"/>

**DRAINAGE STRUCTURE TABLE**

Structure	Type	Top Elev.	Grate Elev.	Bottom Elev.	Notes
CB-1	INLET (TYPE F)	6.99'	6.99'	7.0'	NOT INSTALLED
CB-2	INLET (TYPE F)	6.99'	6.99'	7.0'	NOT INSTALLED
CB-3	INLET (TYPE F)	6.99'	6.99'	7.0'	NOT INSTALLED
CB-4	INLET (TYPE F)	6.99'	6.99'	7.0'	NOT INSTALLED
CB-5	INLET (TYPE F)	6.99'	6.99'	7.0'	NOT INSTALLED
CB-6	INLET (TYPE F)	6.99'	6.99'	7.0'	NOT INSTALLED
CB-7	INLET (TYPE F)	6.99'	6.99'	7.0'	NOT INSTALLED
CB-8	INLET (TYPE F)	6.99'	6.99'	7.0'	NOT INSTALLED
CB-9	INLET (TYPE F)	6.99'	6.99'	7.0'	NOT INSTALLED
CB-10	INLET (TYPE F)	6.99'	6.99'	7.0'	NOT INSTALLED
CB-11	INLET (TYPE F)	6.99'	6.99'	7.0'	NOT INSTALLED
CB-12	INLET (TYPE F)	6.99'	6.99'	7.0'	NOT INSTALLED
CB-13	INLET (TYPE F)	6.99'	6.99'	7.0'	NOT INSTALLED
CB-14	INLET (TYPE F)	6.99'	6.99'	7.0'	NOT INSTALLED
CB-15	INLET (TYPE F)	6.99'	6.99'	7.0'	NOT INSTALLED
CB-16	INLET (TYPE F)	6.99'	6.99'	7.0'	NOT INSTALLED
CB-17	INLET (TYPE F)	6.99'	6.99'	7.0'	NOT INSTALLED
CB-18	INLET (TYPE F)	6.99'	6.99'	7.0'	NOT INSTALLED
CB-19	INLET (TYPE F)	6.99'	6.99'	7.0'	NOT INSTALLED
CB-20	INLET (TYPE F)	6.99'	6.99'	7.0'	NOT INSTALLED
CB-21	INLET (TYPE F)	6.99'	6.99'	7.0'	NOT INSTALLED
CB-22	INLET (TYPE F)	6.99'	6.99'	7.0'	NOT INSTALLED
CB-23	INLET (TYPE F)	6.99'	6.99'	7.0'	NOT INSTALLED
CB-24	INLET (TYPE F)	6.99'	6.99'	7.0'	NOT INSTALLED
CB-25	INLET (TYPE F)	6.99'	6.99'	7.0'	NOT INSTALLED
CB-26	INLET (TYPE F)	6.99'	6.99'	7.0'	NOT INSTALLED
CB-27	INLET (TYPE F)	6.99'	6.99'	7.0'	NOT INSTALLED
CB-28	INLET (TYPE F)	6.99'	6.99'	7.0'	NOT INSTALLED
CB-29	INLET (TYPE F)	6.99'	6.99'	7.0'	NOT INSTALLED
CB-30	INLET (TYPE F)	6.99'	6.99'	7.0'	NOT INSTALLED
CB-31	INLET (TYPE F)	6.99'	6.99'	7.0'	NOT INSTALLED
CB-32	INLET (TYPE F)	6.99'	6.99'	7.0'	NOT INSTALLED
CB-33	INLET (TYPE F)	6.99'	6.99'	7.0'	NOT INSTALLED
CB-34	INLET (TYPE F)	6.99'	6.99'	7.0'	NOT INSTALLED
CB-35	INLET (TYPE F)	6.99'	6.99'	7.0'	NOT INSTALLED
CB-36	INLET (TYPE F)	6.99'	6.99'	7.0'	NOT INSTALLED
CB-37	INLET (TYPE F)	6.99'	6.99'	7.0'	NOT INSTALLED
CB-38	INLET (TYPE F)	6.99'	6.99'	7.0'	NOT INSTALLED
CB-39	INLET (TYPE F)	6.99'	6.99'	7.0'	NOT INSTALLED
CB-40	INLET (TYPE F)	6.99'	6.99'	7.0'	NOT INSTALLED
CB-41	INLET (TYPE F)	6.99'	6.99'	7.0'	NOT INSTALLED
CB-42	INLET (TYPE F)	6.99'	6.99'	7.0'	NOT INSTALLED
CB-43	INLET (TYPE F)	6.99'	6.99'	7.0'	NOT INSTALLED
CB-44	INLET (TYPE F)	6.99'	6.99'	7.0'	NOT INSTALLED
CB-45	INLET (TYPE F)	6.99'	6.99'	7.0'	NOT INSTALLED
CB-46	INLET (TYPE F)	6.99'	6.99'	7.0'	NOT INSTALLED
CB-47	INLET (TYPE F)	6.99'	6.99'	7.0'	NOT INSTALLED
CB-48	INLET (TYPE F)	6.99'	6.99'	7.0'	NOT INSTALLED
CB-49	INLET (TYPE F)	6.99'	6.99'	7.0'	NOT INSTALLED
CB-50	INLET (TYPE F)	6.99'	6.99'	7.0'	NOT INSTALLED
CB-51	INLET (TYPE F)	6.99'	6.99'	7.0'	NOT INSTALLED
CB-52	INLET (TYPE F)	6.99'	6.99'	7.0'	NOT INSTALLED
CB-53	INLET (TYPE F)	6.99'	6.99'	7.0'	NOT INSTALLED
CB-54	INLET (TYPE F)	6.99'	6.99'	7.0'	NOT INSTALLED
CB-55	INLET (TYPE F)	6.99'	6.99'	7.0'	NOT INSTALLED
CB-56	INLET (TYPE F)	6.99'	6.99'	7.0'	NOT INSTALLED
CB-57	INLET (TYPE F)	6.99'	6.99'	7.0'	NOT INSTALLED
CB-58	INLET (TYPE F)	6.99'	6.99'	7.0'	NOT INSTALLED
CB-59	INLET (TYPE F)	6.99'	6.99'	7.0'	NOT INSTALLED
CB-60	INLET (TYPE F)	6.99'	6.99'	7.0'	NOT INSTALLED
CB-61	INLET (TYPE F)	6.99'	6.99'	7.0'	NOT INSTALLED
CB-62	INLET (TYPE F)	6.99'	6.99'	7.0'	NOT INSTALLED
CB-63	INLET (TYPE F)	6.99'	6.99'	7.0'	NOT INSTALLED
CB-64	INLET (TYPE F)	6.99'	6.99'	7.0'	NOT INSTALLED
CB-65	INLET (TYPE F)	6.99'	6.99'	7.0'	NOT INSTALLED
CB-66	INLET (TYPE F)	6.99'	6.99'	7.0'	NOT INSTALLED
CB-67	INLET (TYPE F)	6.99'	6.99'	7.0'	NOT INSTALLED
CB-68	INLET (TYPE F)	6.99'	6.99'	7.0'	NOT INSTALLED
CB-69	INLET (TYPE F)	6.99'	6.99'	7.0'	NOT INSTALLED
CB-70	INLET (TYPE F)	6.99'	6.99'	7.0'	NOT INSTALLED
CB-71	INLET (TYPE F)	6.99'	6.99'	7.0'	NOT INSTALLED
CB-72	INLET (TYPE F)	6.99'	6.99'	7.0'	NOT INSTALLED
CB-73	INLET (TYPE F)	6.99'	6.99'	7.0'	NOT INSTALLED
CB-74	INLET (TYPE F)	6.99'	6.99'	7.0'	NOT INSTALLED
CB-75	INLET (TYPE F)	6.99'	6.99'	7.0'	NOT INSTALLED
CB-76	INLET (TYPE F)	6.99'	6.99'	7.0'	NOT INSTALLED
CB-77	INLET (TYPE F)	6.99'	6.99'	7.0'	NOT INSTALLED
CB-78	INLET (TYPE F)	6.99'	6.99'	7.0'	NOT INSTALLED
CB-79	INLET (TYPE F)	6.99'	6.99'	7.0'	NOT INSTALLED
CB-80	INLET (TYPE F)	6.99'	6.99'	7.0'	NOT INSTALLED
CB-81	INLET (TYPE F)	6.99'	6.99'	7.0'	NOT INSTALLED
CB-82	INLET (TYPE F)	6.99'	6.99'	7.0'	NOT INSTALLED
CB-83	INLET (TYPE F)	6.99'	6.99'	7.0'	NOT INSTALLED
CB-84	INLET (TYPE F)	6.99'	6.99'	7.0'	NOT INSTALLED
CB-85	INLET (TYPE F)	6.99'	6.99'	7.0'	NOT INSTALLED
CB-86	INLET (TYPE F)	6.99'	6.99'	7.0'	NOT INSTALLED
CB-87	INLET (TYPE F)	6.99'	6.99'	7.0'	NOT INSTALLED
CB-88	INLET (TYPE F)	6.99'	6.99'	7.0'	NOT INSTALLED
CB-89	INLET (TYPE F)	6.99'	6.99'	7.0'	NOT INSTALLED
CB-90	INLET (TYPE F)	6.99'	6.99'	7.0'	NOT INSTALLED
CB-91	INLET (TYPE F)	6.99'	6.99'	7.0'	NOT INSTALLED
CB-92	INLET (TYPE F)	6.99'	6.99'	7.0'	NOT INSTALLED
CB-93	INLET (TYPE F)	6.99'	6.99'	7.0'	NOT INSTALLED
CB-94	INLET (TYPE F)	6.99'	6.99'	7.0'	NOT INSTALLED
CB-95	INLET (TYPE F)	6.99'	6.99'	7.0'	NOT INSTALLED
CB-96	INLET (TYPE F)	6.99'	6.99'	7.0'	NOT INSTALLED
CB-97	INLET (TYPE F)	6.99'	6.99'	7.0'	NOT INSTALLED
CB-98	INLET (TYPE F)	6.99'	6.99'	7.0'	NOT INSTALLED
CB-99	INLET (TYPE F)	6.99'	6.99'	7.0'	NOT INSTALLED
CB-100	INLET (TYPE F)	6.99'	6.99'	7.0'	NOT INSTALLED

**SECTION C-C**

10.8' EL. = 3.5'  
 13.5'  
 0.75' WALK  
 UNIFORMITY GRADE TO DISCHARGE SWALE  
 TO MEET EXISTING GRADE IN SWALE OF FOOT RIGHT-OF-WAY

**LEGEND:**

- Spot Elevation
- Accuracy is 0.1'

**REPORT OF SURVEY**

ACCURACY: VERTICAL: FIELD-MEASURED CONTROL FOR VERTICAL DATA SHOWN HEREON ARE BASED ON A LEVEL LOOP CLOSURE IN FEET EXCEEDS A STANDARD OF PLUS OR MINUS 0.05 TIMES THE SQUARE ROOT OF THE DISTANCE IN FEET.

DATA SOURCE: CONSTRUCTION PLANS IN AUTOCAD FORMAT FURNISHED BY CONSULT-TECH DEVELOPMENT SERVICES, INC.

BOUNDARY SURVEY BY MSB SURVEYING, INC.

NO OTHER INFORMATION WAS RESEARCHED OR FURNISHED.

NOTES:  
 1. THIS MAP REPRESENTS A UTILITY RECORD SURVEY RELATIVE TO THE CONSTRUCTION OF THE PROJECT.  
 2. OVERLAP ONTO CONSTRUCTION PLANS IN AUTOCAD FORMAT. ALL GRAY SCALE DATA IS FOR REFERENCE ONLY & IS NOT A PART OF THIS SURVEY.  
 3. ELEVATIONS SHOWN HEREON ARE IN FEET AND DECIMALS REFERENCED TO MGD 1929 DATUM.  
 4. ELEVATION = 8.67 N.C.V.D. 1929  
 5. UTILITY RECORD SURVEY IS NOT VALID UNLESS ALL SHEETS AS DICATED BY THE COVER SHEET ARE PRESENT.

<p>SCALE: 1" = 40'</p> <p>CAD FILE: S-002</p> <p>DWG NO: S-002-site-04-10-03</p> <p style="font-size: 24pt; font-weight: bold;">C104</p>	<p>DESIGN BY: VAREE</p> <p>DRAWN BY: VAREE</p> <p>CHECKED BY: RHE</p> <p>DATE: 01/09/03</p>	<p><b>ConsultTech</b></p> <p>DEVELOPMENT SERVICES, INC.</p> <p>CIVIL ENGINEERING, SURVEYING AND CONSTRUCTION MANAGEMENT/ENVIRONMENTAL</p> <p>9015 Town Center Parkway, Suite 112, Sarasota Florida 34208; Phone: 941-607-8822; Fax: 941-607-8821</p> <p><small>NOTE: The undersigned and CONSULT-TECH DEVELOPMENT SERVICES, INC. make no representation or guarantee as to the completeness of the information reflected herein pertaining to easements, right of way, setbacks, etc., or any other matters. The information is provided for reference only and does not constitute a warranty. CONSULT-TECH DEVELOPMENT SERVICES, INC. shall not be responsible for the accuracy of the information reflected herein.</small></p> <p><small>NOTE: This document is the property of CONSULT-TECH DEVELOPMENT SERVICES, INC. and shall not be reproduced in whole or in part without the written consent of CONSULT-TECH DEVELOPMENT SERVICES, INC.</small></p>	<p><b>POSITANO</b></p> <p>Project No. 03020440</p> <p>LONGBOAT KEY, FLORIDA</p> <p>SECTION 36, TOWNSHIP 35 S., RANGE 16 E.</p> <p><b>PAVING, GRADING &amp; DRAINAGE PLAN</b></p>	<p><b>DATE</b></p> <p>02/13/04</p> <p>03/11/04</p> <p>06/14/04</p> <p>08/03/04</p> <p>08/05/04</p> <p>08/17/04</p> <p>04/26/06</p> <p><b>REVISIONS:</b></p> <p>REVISED GRADES AROUND GUARD HOUSE</p> <p>REVISED GRADES AROUND POOL</p> <p>APPROVED FOR CONSTRUCTION PER CLIENTS REQUEST.</p> <p>BUTTEFTIN 1 REV. GATE HOUSE &amp; REC. BLDG. ADDED SWALE INFORMATION.</p> <p>ISSUED FOR FOUNDATION PERMIT FOOT PRINT.</p> <p>REVISED LAKE GEOMETRY</p> <p>MODIFY CB-7 AND CLARIFY CURBING AROUND GATE HOUSE</p>
--	---	--	--	---