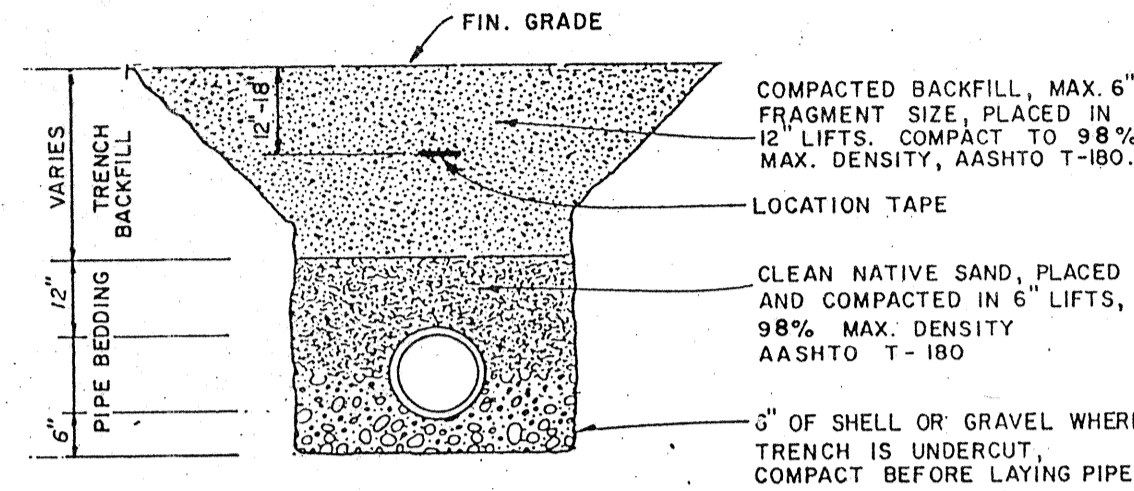


TRENCH "A" DETAIL (TLBK)



TRENCH "B" DETAIL (TLBK)

GENERAL NOTES

- MANHOLE RIM ELEVATIONS SHOWN ARE APPROX. THE CONTRACTOR SHALL SET RIM PLUSH WITH FINISHED ASPHALT SURFACE IN PAVED AREAS AND BE 0.10 ABOVE FINISHED GRADE IN GRASS AREAS.
- IT SHALL BE THE CONTRACTORS RESPONSIBILITY TO NOTIFY CANDY FP & L AND THE OWNER FOR UTILITY LOCATION. NOTE BELOW
- THE CONTRACTOR SHALL MAINTAIN UTILITY SERVICE TO ALL LOTS DURING CONSTRUCTION AND NO NEW SERVICE CONNECTIONS SHALL BE MADE WITHOUT THE ENGINEERS APPROVAL.
- CONTRACTOR SHALL RESTORE DISTURBED AREAS TO CONDITIONS EQUAL TO OR BETTER THAN EXISTING.
- ALL DISTURBED AREAS SHALL BE SEEDED UNLESS CALLED SPECIFICALLY TO BE SODED.

OWNER:  
ARVIDA  
383-9551

FP & L:  
953-7265

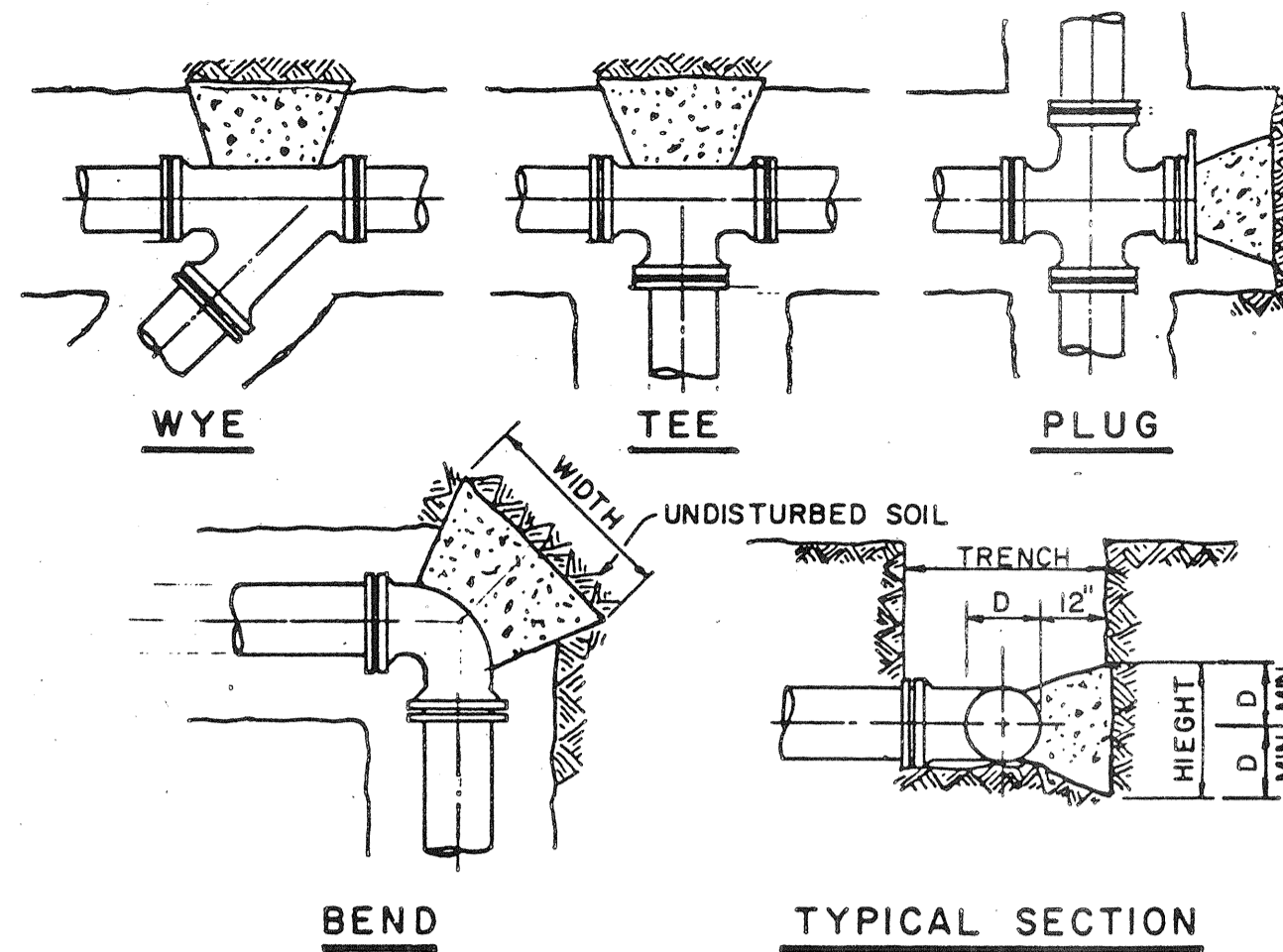
TOWN OF LONGBOAT KEY  
383-3721

**INVESTIGATE BEFORE YOU EXCAVATE**

**"CALL CANDY"**  
1-800-282-8881

TOLL FREE

FL STATUTE 320.301 (1979) REQUIRES MIN. OF 2 DAYS AND MAX. OF 5 DAYS NOTICE BEFORE YOU EXCAVATE.



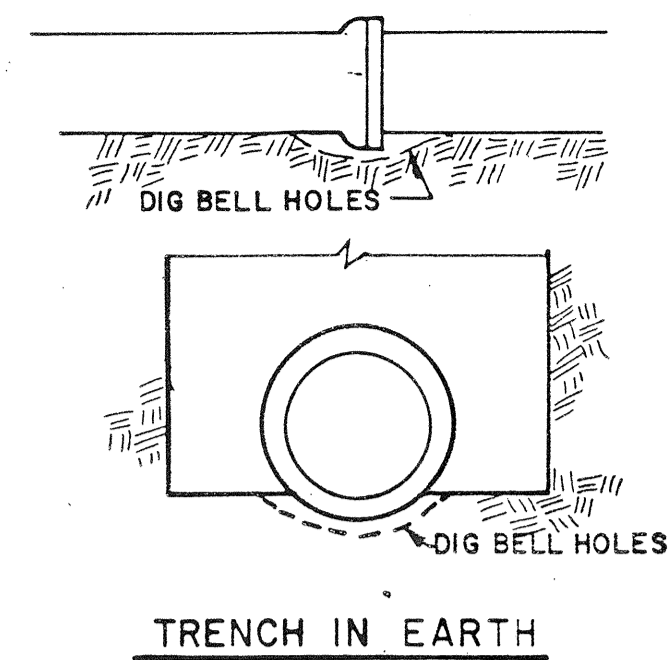
NOTES

- THRUST BLOCK BEARING AREA BASED ON 2000 PSF SAFE SOIL BEARING. IF ACTUAL SOIL BEARING IS LESS THAN 2000 PSF, CONTRACTOR SHALL BE REQUIRED TO PLACE ADDITIONAL THRUST BEARING AS DETERMINED BY THE ENGINEER AT NO ADDITIONAL COST.
- THRUST BLOCKS SHALL BE POURED AGAINST UNDISTURBED SOIL. KEEP "T" BOLTS CLEAR OF CONCRETE.
- BEFORE POURING CONCRETE, PLUG SHALL BE WRAPPED WITH VISQUEEN AND A BOARD PLACED IN FRONT.

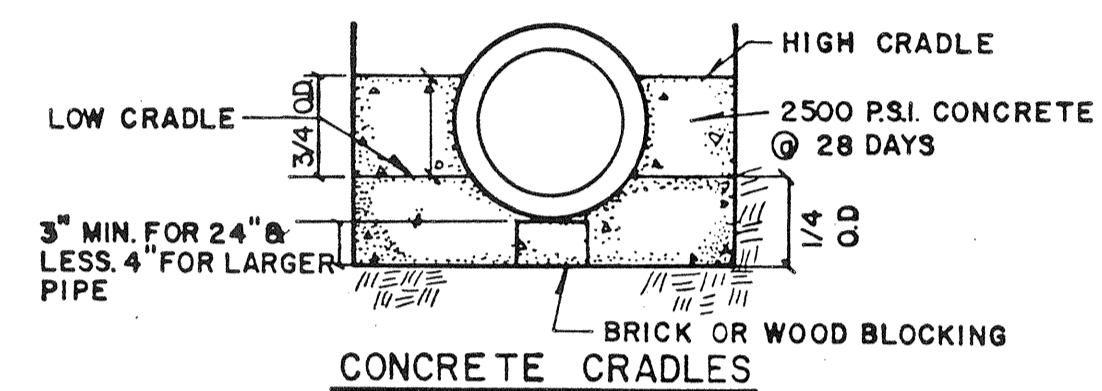
BEARING SURFACE AREA - Sq. Ft.

PIPE SIZE	TEE & PLUG	90° ELB	45° ELB.
4"	1.0	1.0	1.0
6"	1.0	2.6	1.4
8"	3.3	4.6	2.5
10"	5.9	7.3	3.9
12"	7.7	10.0	5.7

THRUST BLOCK DETAIL

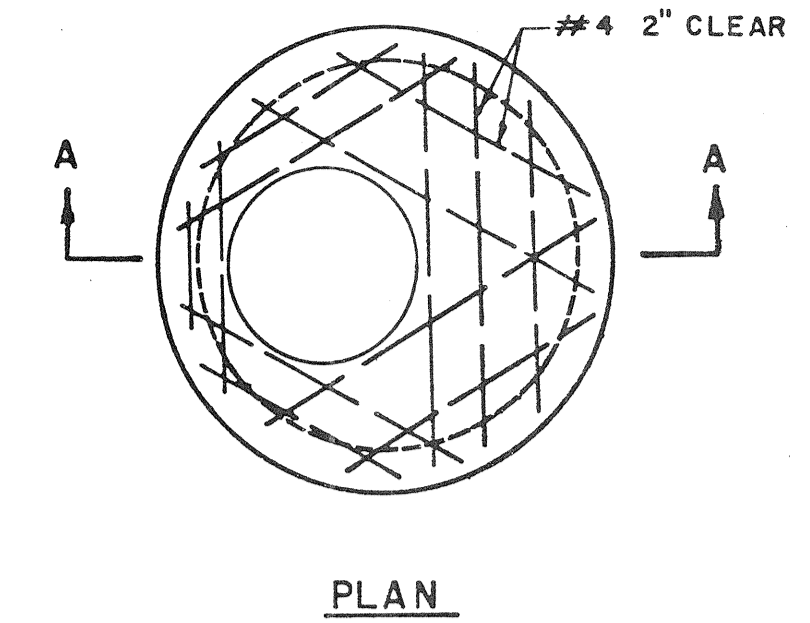


TRENCH IN ROCK

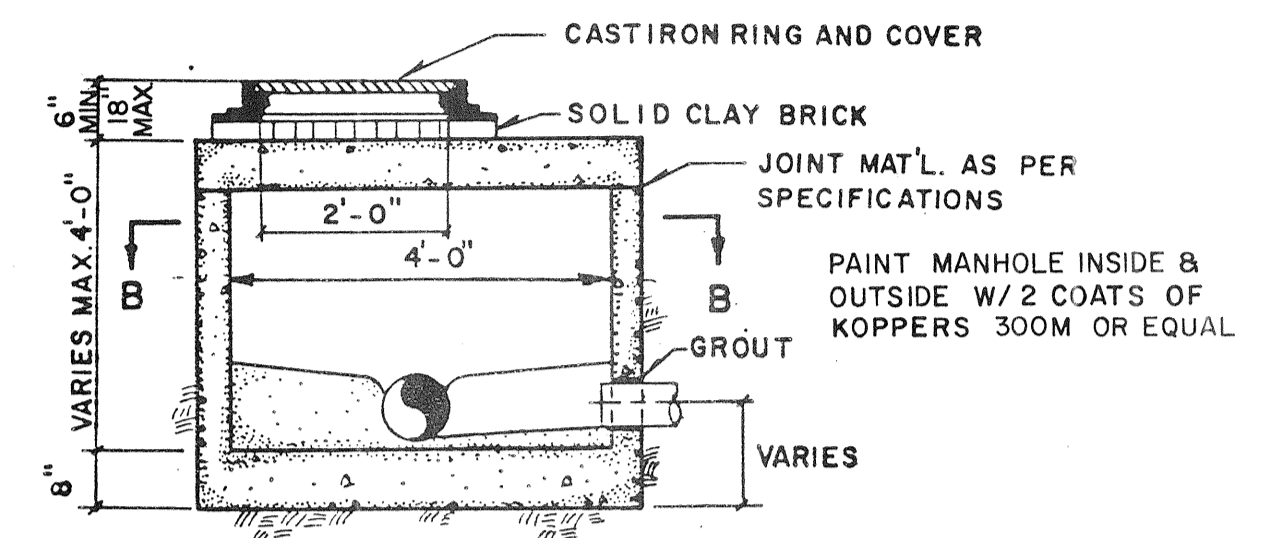


TRENCH BEDDING DETAIL

N.T.S.

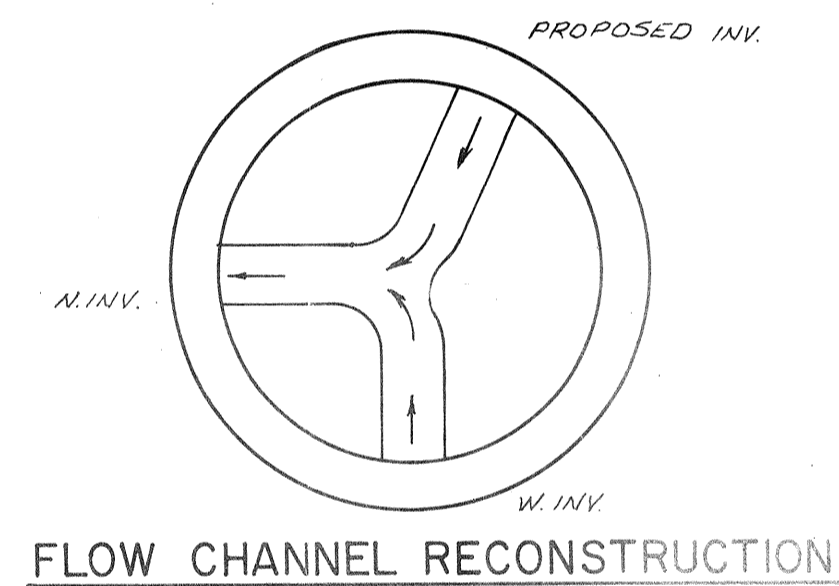


PLAN

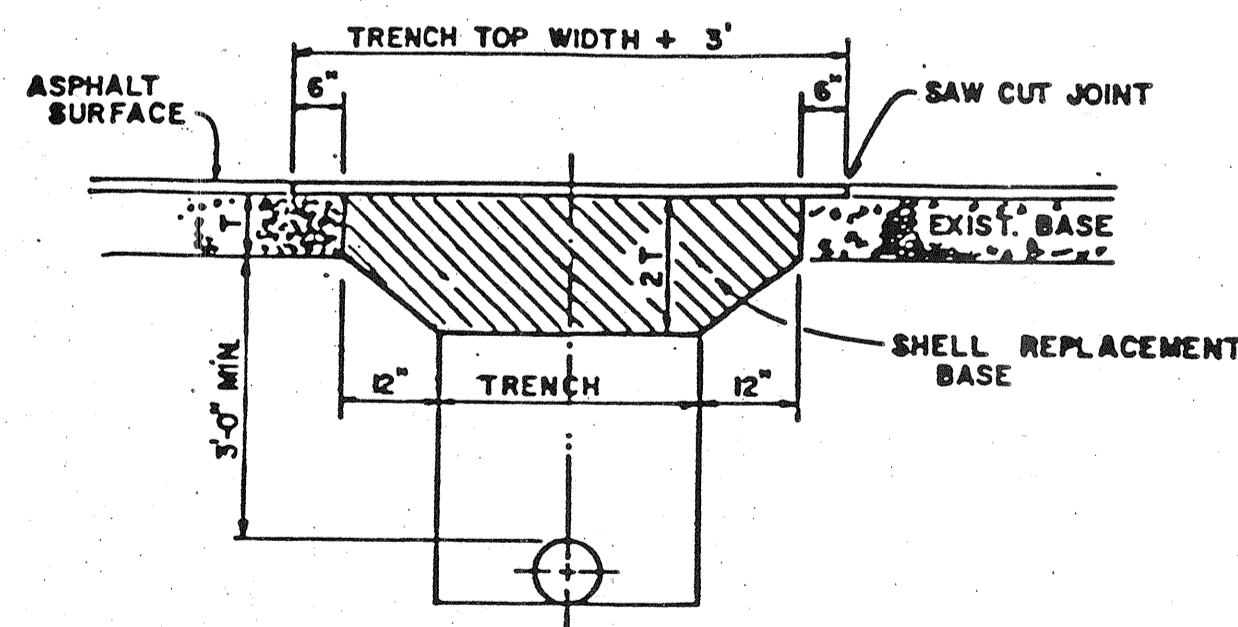
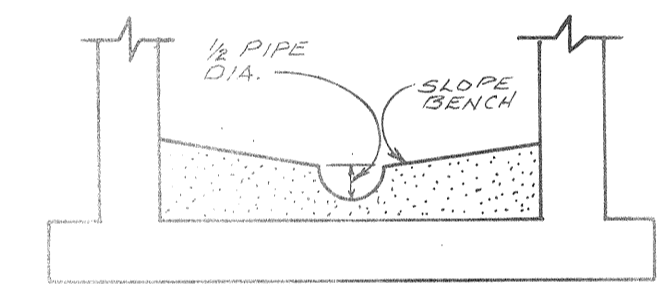


SECTION A-A  
SCALE 1/2" = 1'-0"

SHALLOW MANHOLE DETAIL



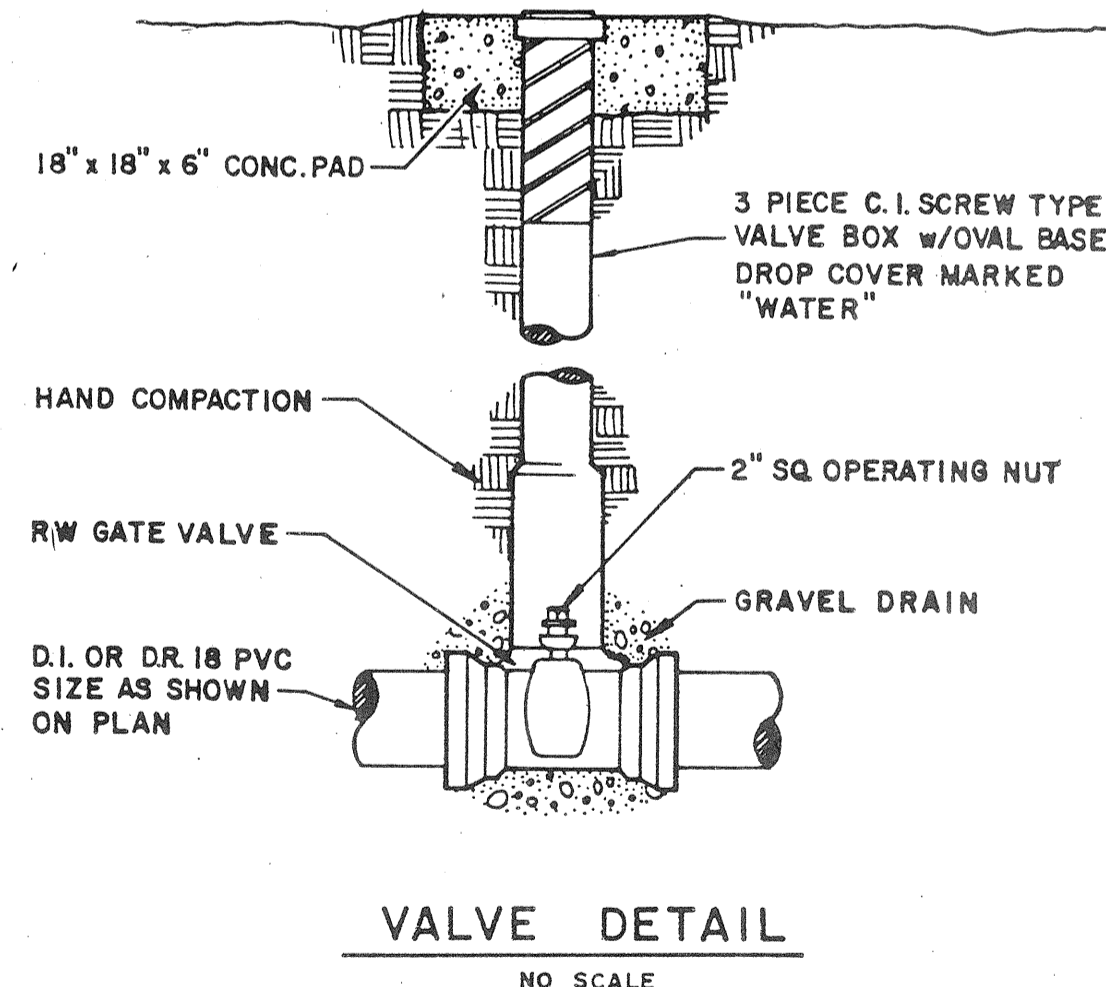
FLOW CHANNEL RECONSTRUCTION



NOTES:

- Approved base material shall be compacted in 6" lifts, max. to 98% density (A.A.S.H.T.O. T-180).
- Asphalt concrete pavement joints shall be mechanically sawed.
- Surface treated pavement joints shall be lapped and feathered.
- Surface material shall be consistent with existing surface, asphalt type I or Type II and equal or greater in thickness.

PAVEMENT RESTORATION DETAIL

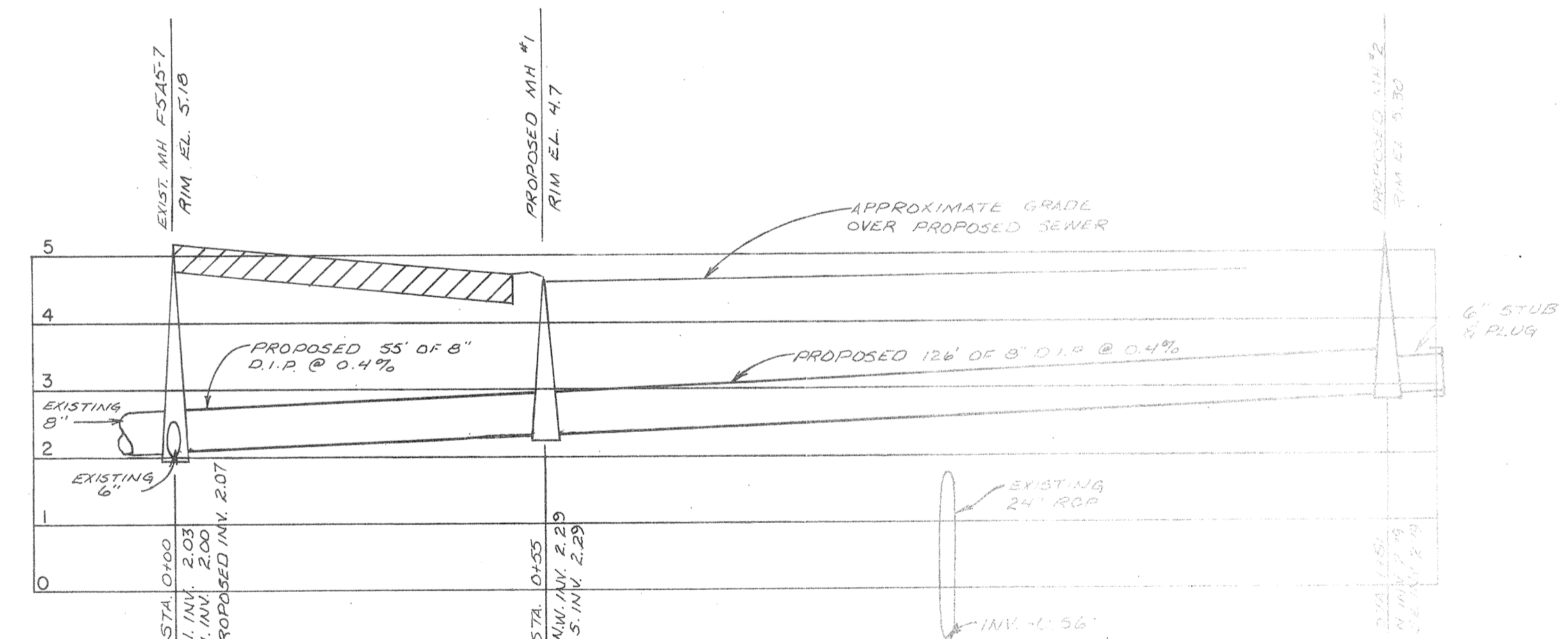


VALVE DETAIL

NO SCALE

NOTE:

- ALL PVC WATERMAIN SHALL BE COLOR CODED BLUE w/CLASS DR-18, (AWWA C900), w/36" COVER & DETECTABLE TAPE.
- CONTRACTOR TO CONTACT T.O.L.B.K. UTILITIES DIRECTOR AND ENGINEER FOR CHANGE OF MAT'L'S.



SANITARY SEWER PROFILE

SCALE: HORIZ. 1" = 20', VERT. 1" = 2'

NOTE: CONTRACTOR TO CORE HOLE IN EXISTING MANHOLE. SEAL w/ FLEX JOINT CONNECTION, NEOPRENE BOOT OR LINK SEAL. GROUT INSIDE & OUT.

REVISED	BY	DATE	DESCRIPTION	REVISIONS	BY	DATE	DESCRIPTION
SW/S	10-11-88		RELOCATE MH #2				
SW/S	10-10-88		REVISED PER TLBK COMMENTS				

DATE: 9-29-88  
SCALE: As Noted  
DESIGN: CLJ  
DRAWN: SHS  
CHECKED: JCL  
APPROVED: [Signature]