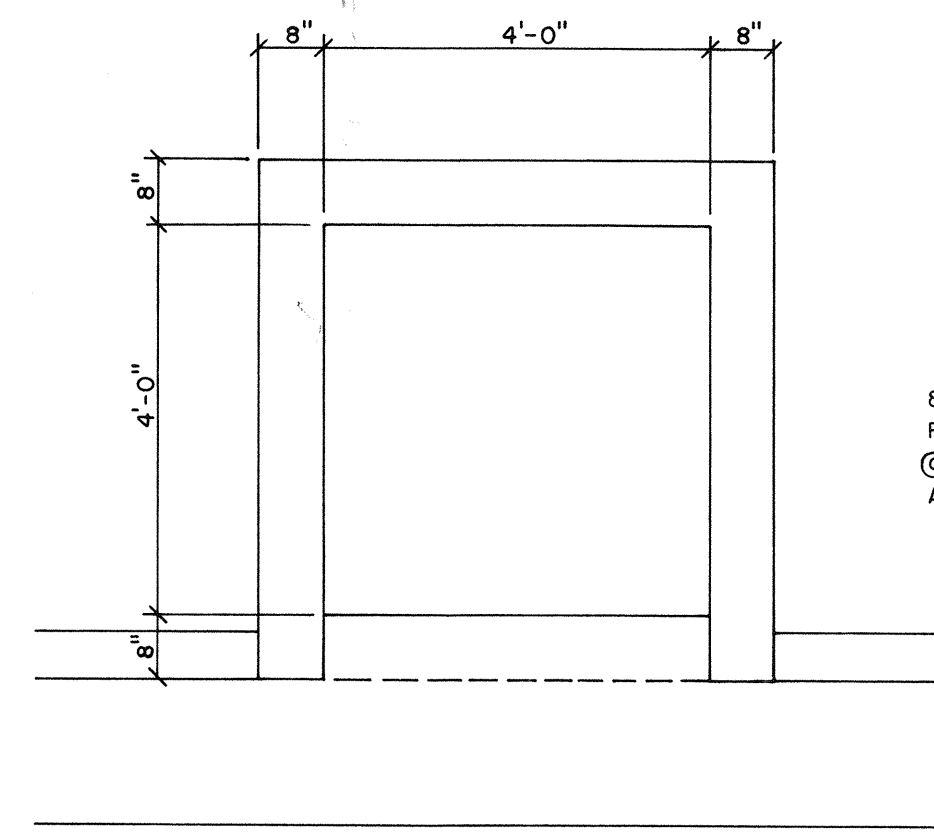
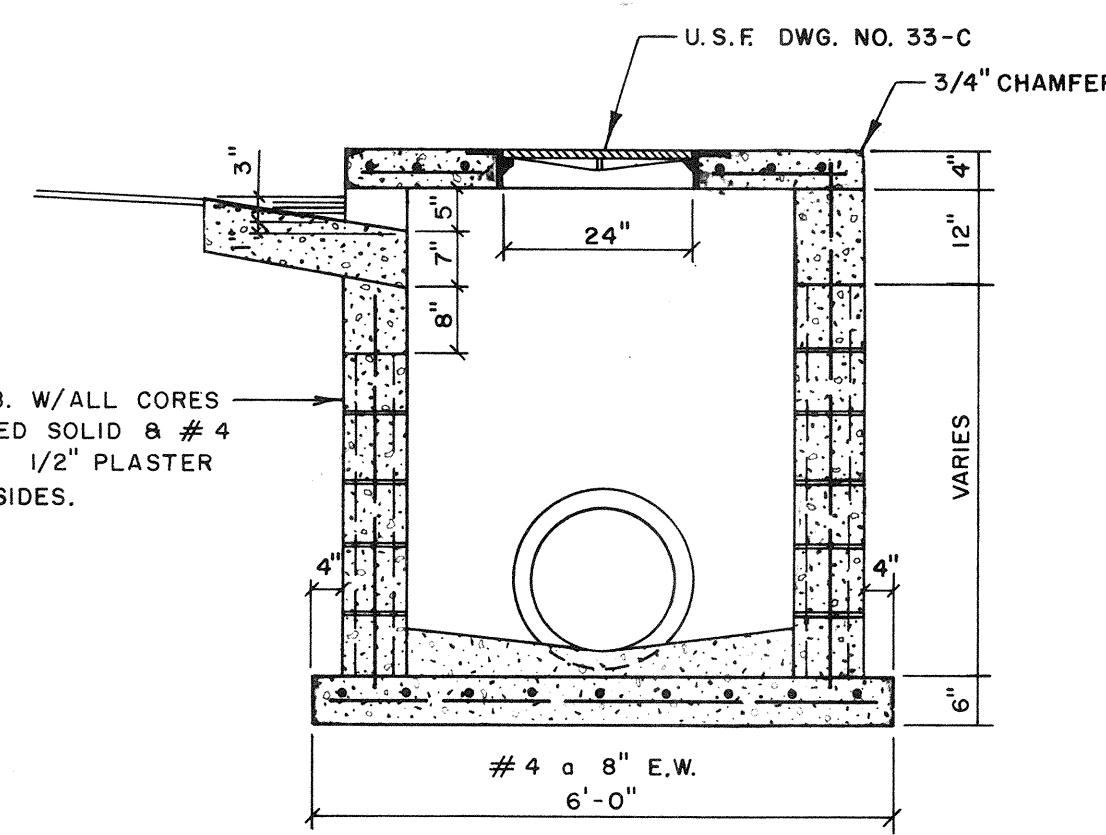


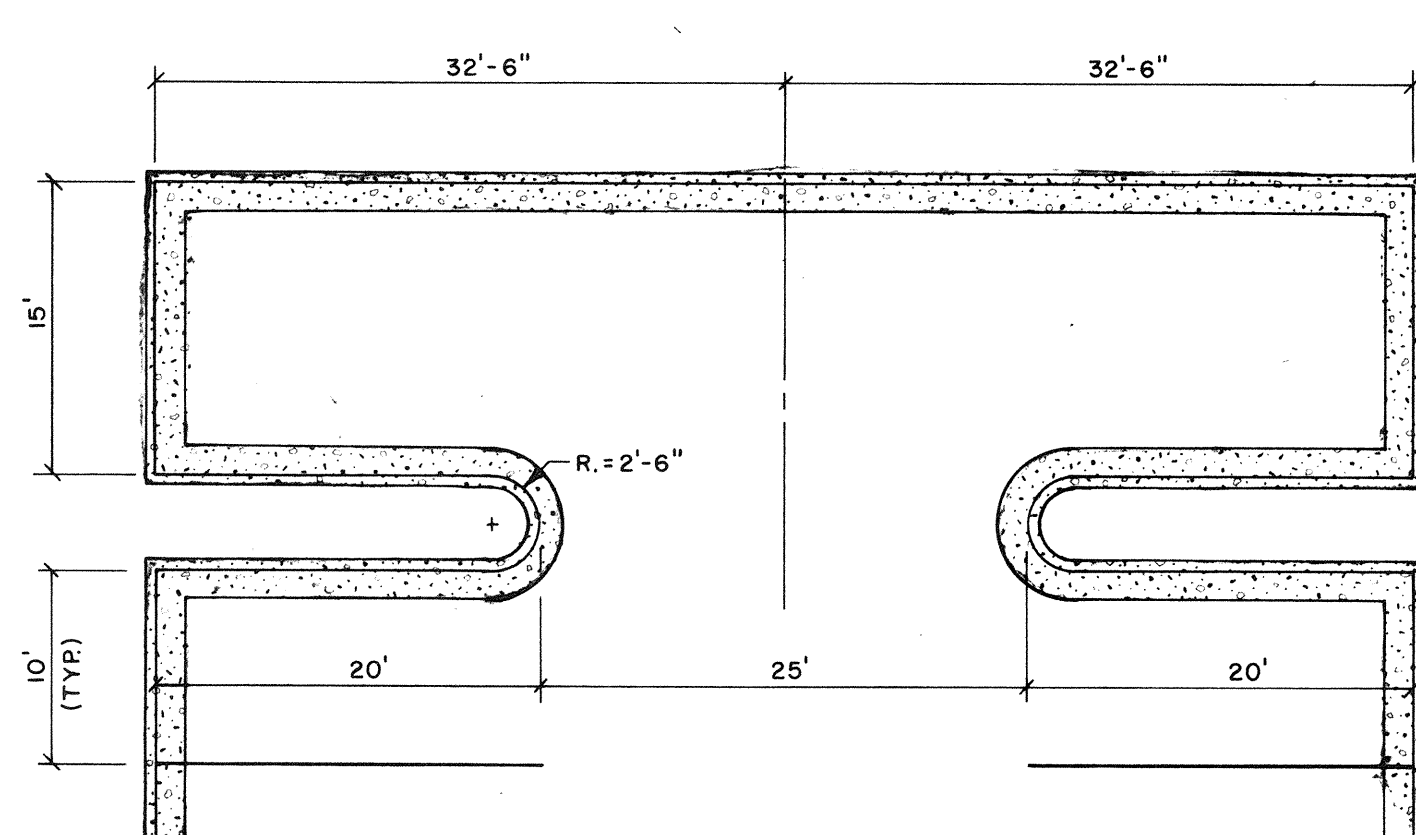
PLAN - COVER



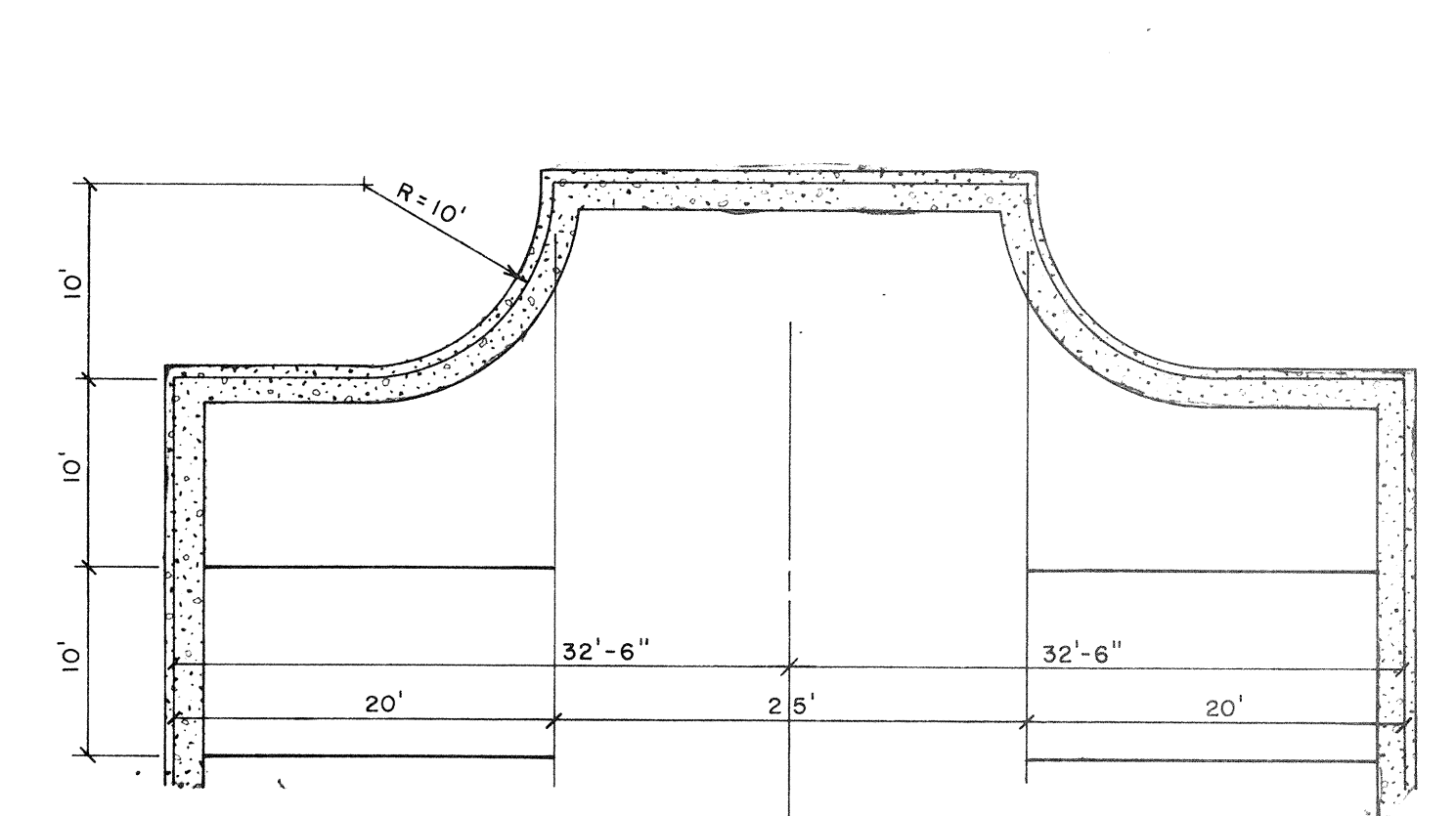
PLAN - COVER REMOVED



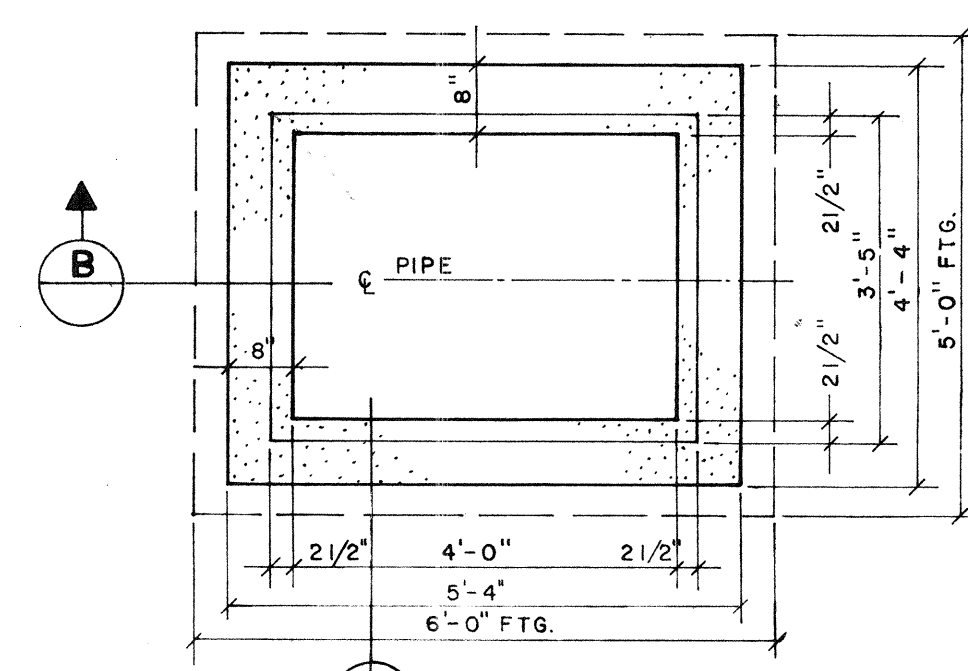
SECTION



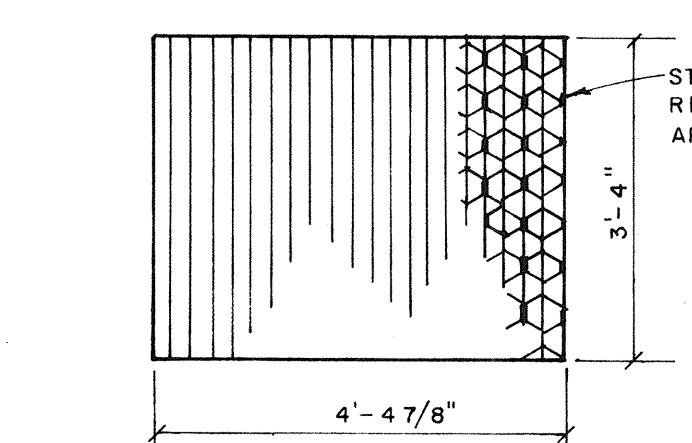
TURNAROUND DETAIL "A"
SCALE: 1" = 10'-0"



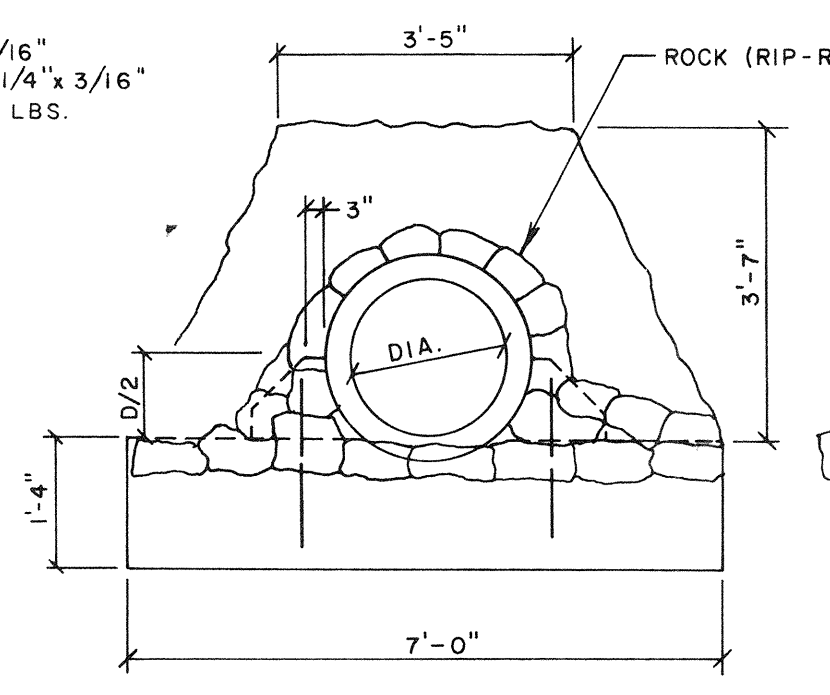
TURNAROUND DETAIL "B"
SCALE: 1" = 10'-0"



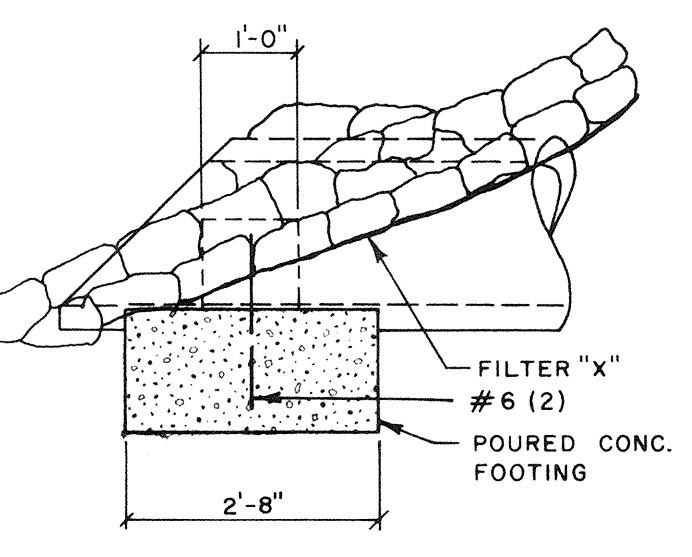
TYPICAL DROP INLET
SCALE: 1/2" = 1'-0"



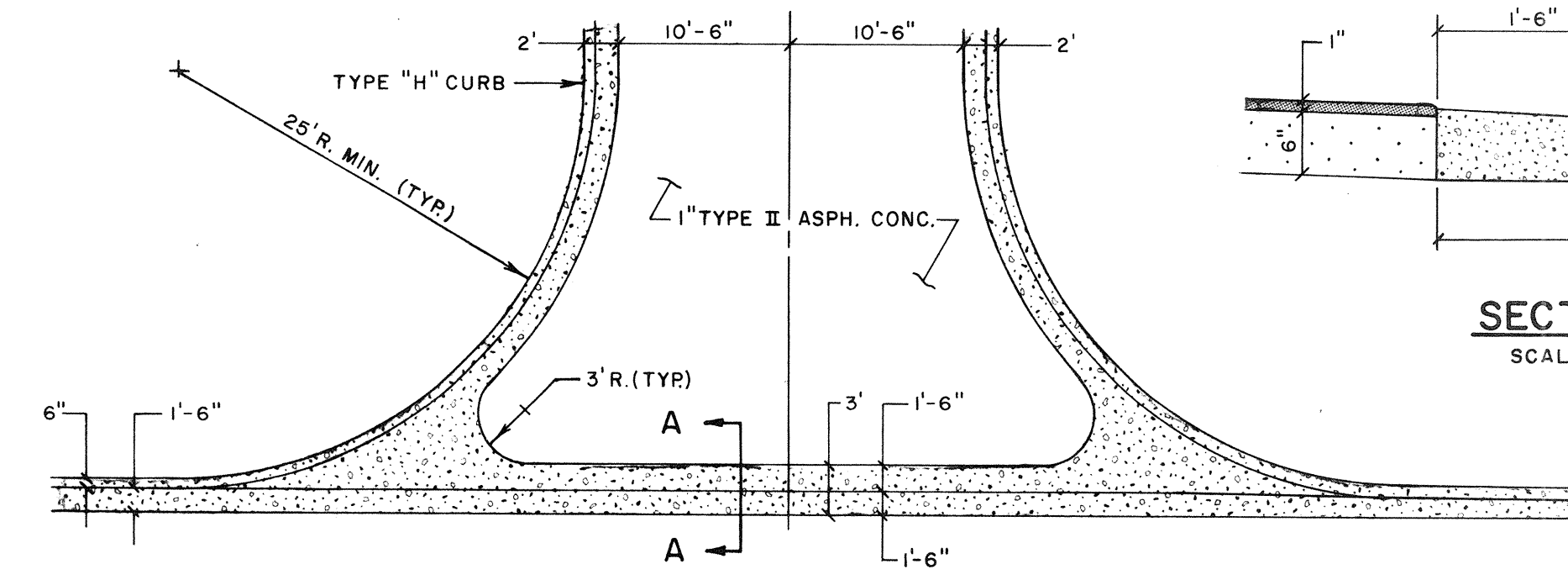
TYPE "E" STEEL GRATING
(DOT INDEX DDI-03)



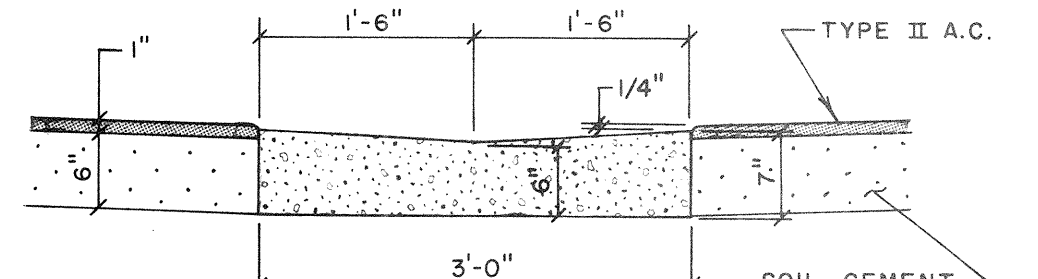
TYPICAL ENDWALL
SCALE: 1/2" = 1'-0"



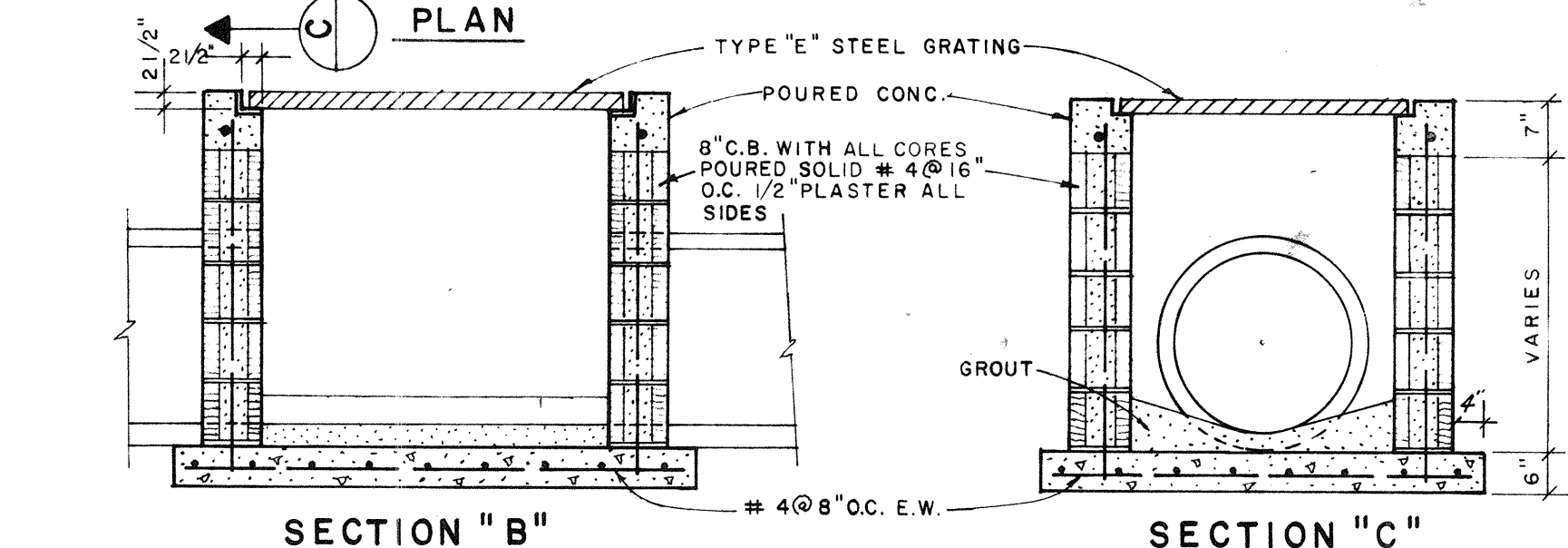
SECTION



VALLEY GUTTER DETAIL
SCALE: 1" = 10'-0"

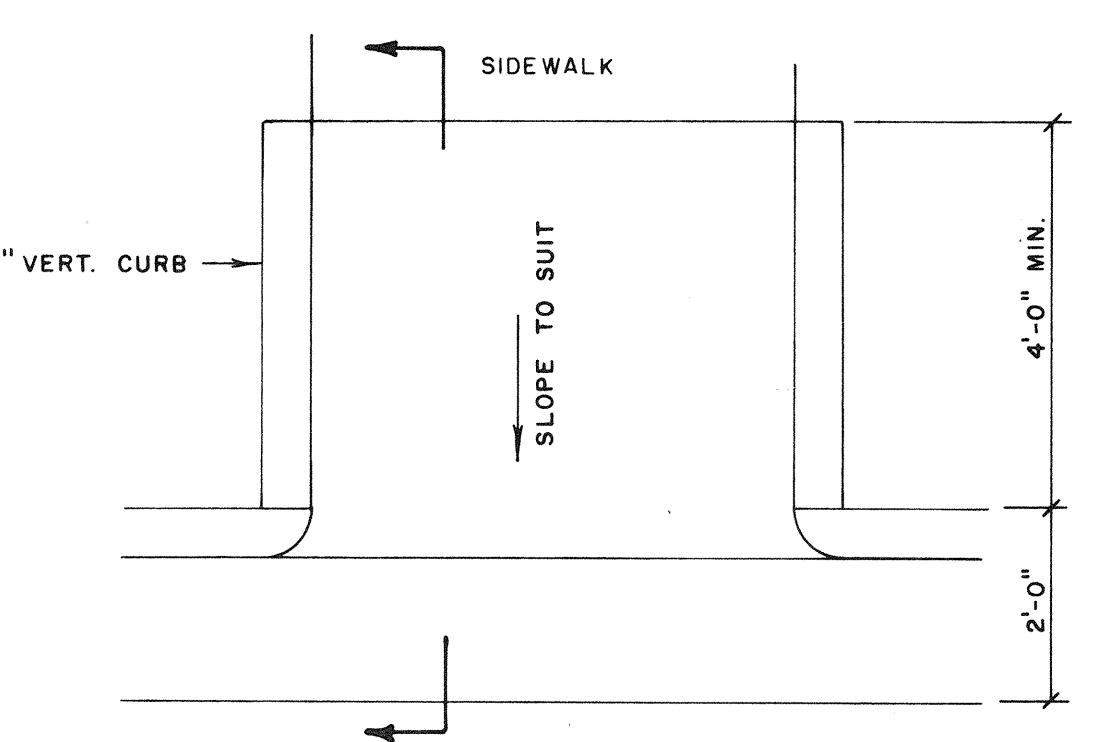


SECTION A-A
SCALE: 3/4" = 1'-0"

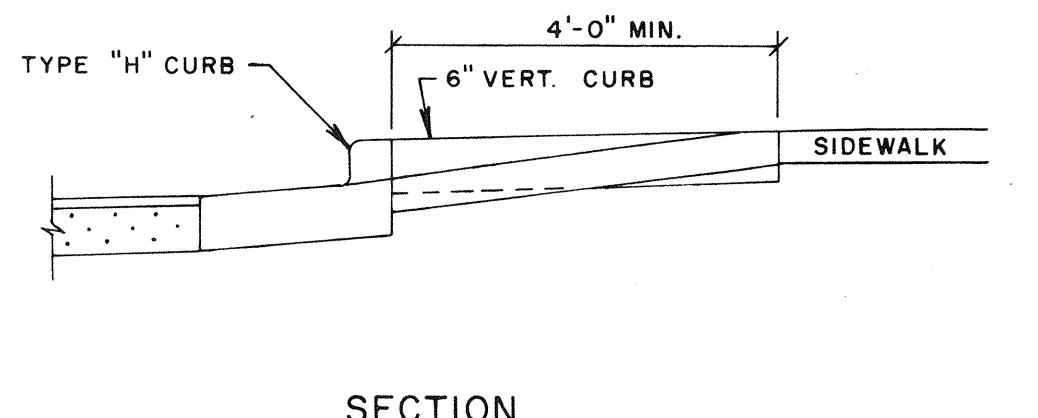


SECTION "B"

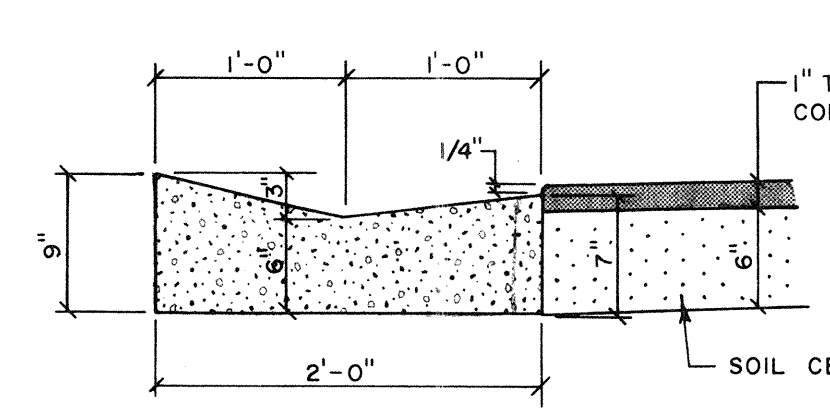
SECTION "C"



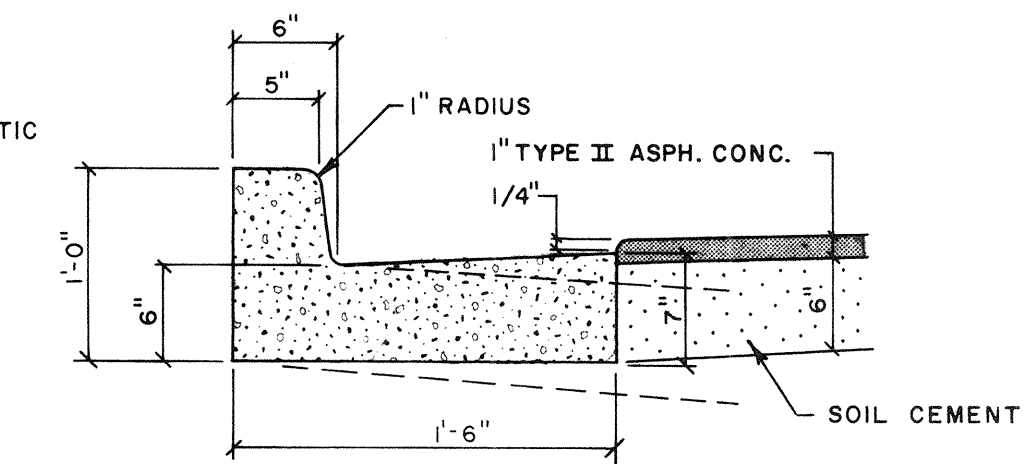
BICYCLE RAMP DETAIL
SCALE: 1/2" = 1'-0"



SECTION

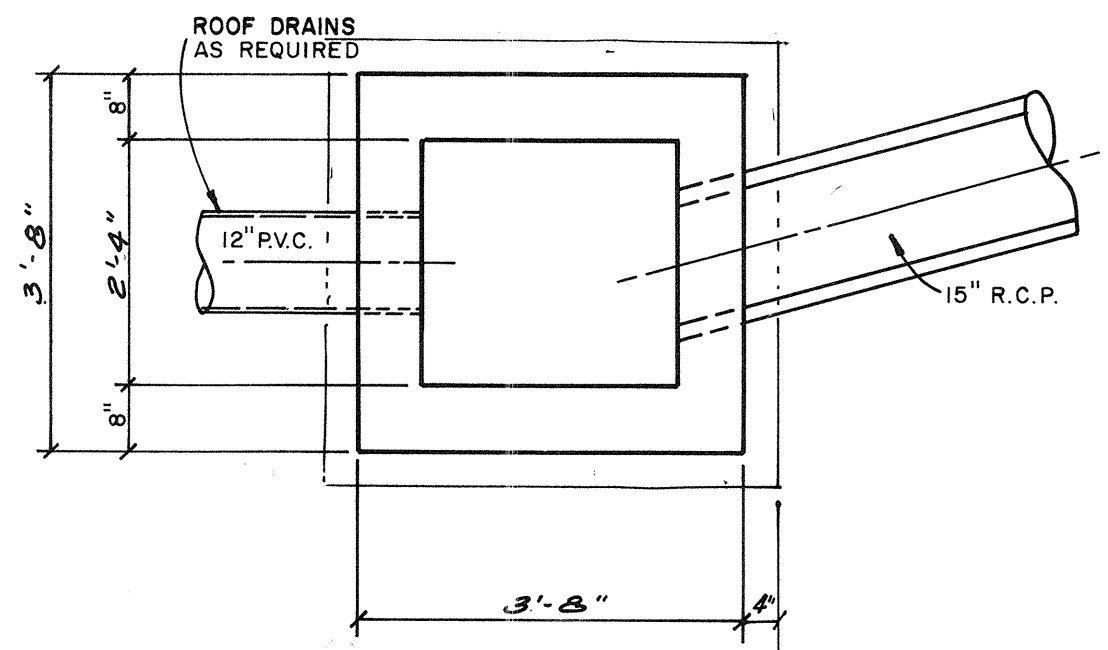


TYPE "K" CURB
SCALE: 1" = 1'-0"



TYPE "H" CURB
SCALE: 1" = 1'-0"

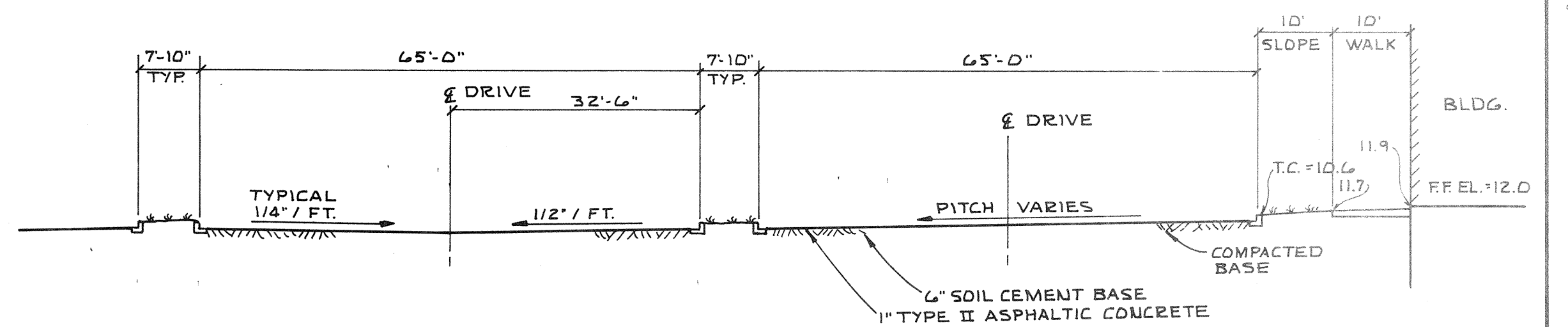
CURBS POURED WITH CONTINUOUS PAVING MACHINE SHALL HAVE JOINTS SAW CUT EVERY 10' FOLLOWING COMPLETION OF POUR. CONSTRUCTION JOINTS SHALL BE 10' O.C. AND 1/2" PREMOLDED EXP. JOINTS AT 40' O.C.



PLAN (S-6 # 3-9)
TYPICAL DROP INLET
N.T.S.

CASTING = U.S.F. # 4170

NOTE: FOR DETAILS OF CONSTRUCTION SEE TYPICAL DROP INLET DETAILS.



SECTION A-03
N.T.S.

WILLIAM F. BISHOP & ASSOCIATES, INC.
CONSULTING ENGINEERS - SURVEYORS
SARASOTA, FLORIDA

Mace *Product # 3509*

DATE	SCALE	DESIGN	DRAWN	CHECK	APPROVED	DATE	DESCRIPTION
5/12/84	AS SHOWN		R.A.B.	F.V.			ADDED TYPICAL DROP INLET DETAIL

MASTHEAD CORP.
G.P.D. COMMERCIAL
PAVING & DRAINAGE DETAILS