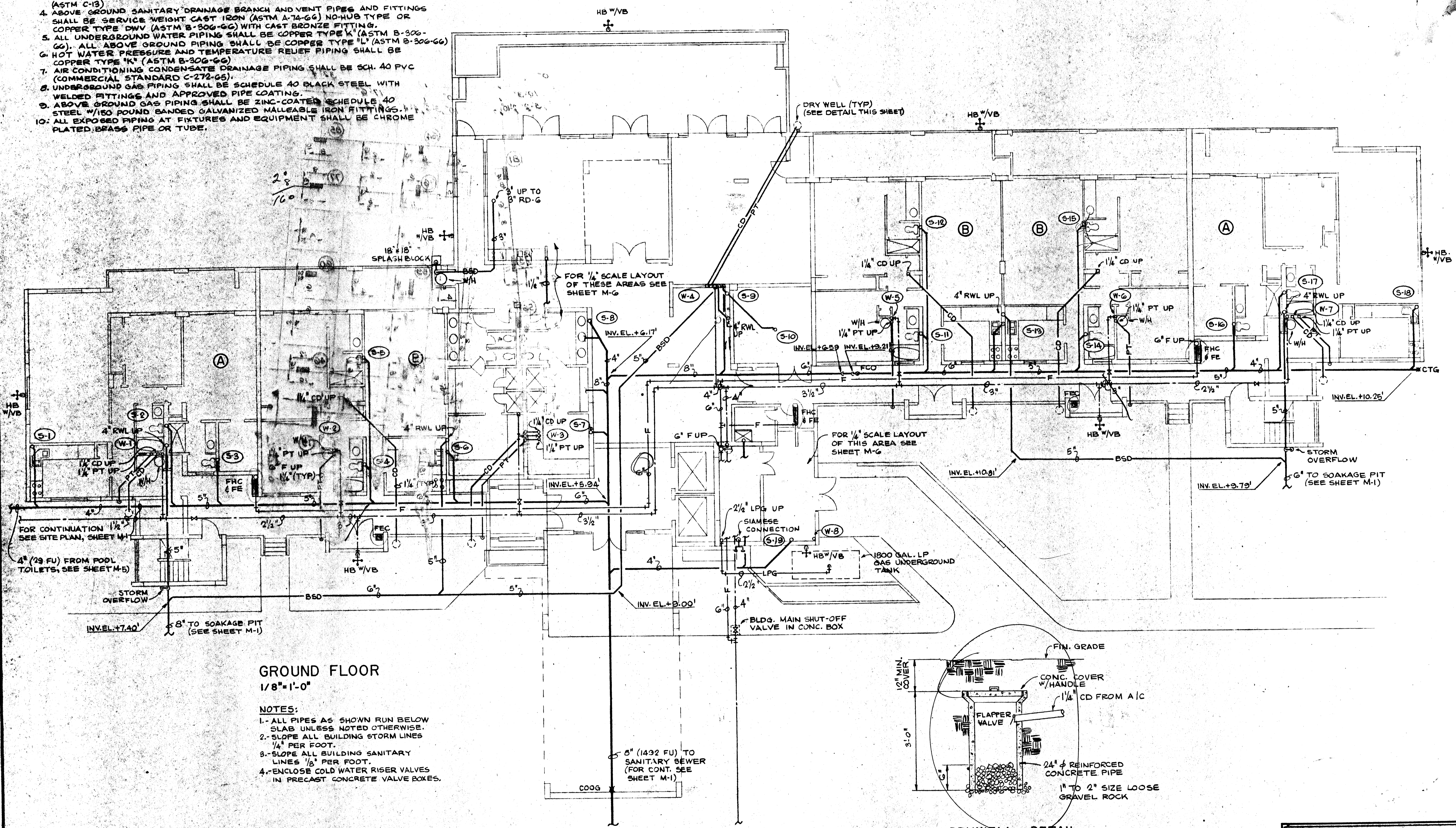


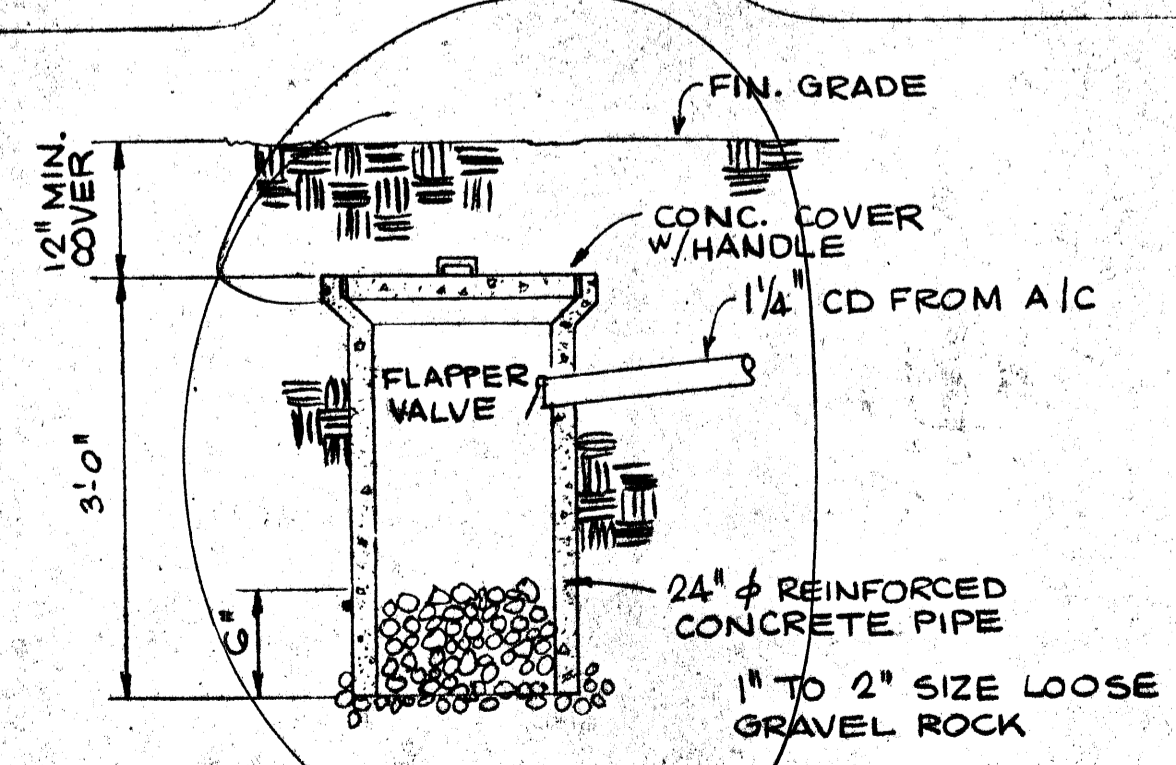
**GENERAL NOTES**

1. ALL WORK SHALL COMPLY WITH ALL LOCAL LAWS, THE SOUTHERN STANDARD BUILDING CODE AND THE NATIONAL PLUMBING CODE.
2. UNDERGROUND SANITARY AND STORM DRAINAGE PIPING AND FITTINGS WITHIN THE BUILDING SHALL BE SERVICE WEIGHT CAST IRON (ASTM A-74-66) (BELL AND SPIGOT TYPE).
3. UNDERGROUND SANITARY AND STORM DRAINAGE PIPING BEYOND 5 FT. OUTSIDE OF THE BUILDING SHALL BE EXTRA-HEAVY VITRIFIED CLAY PIPE AND FITTINGS (ASTM C-13).
4. ABOVE GROUND SANITARY DRAINAGE BRANCH AND VENT PIPES AND FITTINGS SHALL BE SERVICE WEIGHT CAST IRON (ASTM A-74-66) NO-HUB TYPE OR COPPER TYPE DWV (ASTM B-306-66) WITH CAST BRONZE FITTING.
5. ALL UNDERGROUND WATER PIPING SHALL BE COPPER TYPE 'K' (ASTM B-306-66). ALL ABOVE GROUND PIPING SHALL BE COPPER TYPE 'L' (ASTM B-306-66).
6. HOT WATER PRESSURE AND TEMPERATURE RELIEF PIPING SHALL BE COPPER TYPE 'K' (ASTM B-306-66).
7. AIR CONDITIONING CONDENSATE DRAINAGE PIPING SHALL BE SCH. 40 PVC (COMMERCIAL STANDARD C-272-65).
8. UNDERGROUND GAS PIPING SHALL BE SCHEDULE 40 BLACK STEEL WITH WELDED FITTINGS AND APPROVED PIPE COATING.
9. ABOVE GROUND GAS PIPING SHALL BE ZINC-COATED SCHEDULE 40 STEEL W/150 POUND GALVANIZED MALLEABLE IRON FITTINGS.
10. ALL EXPOSED PIPING AT FIXTURES AND EQUIPMENT SHALL BE CHROME PLATED BRASS PIPE OR TUBE.



**GROUND FLOOR**  
1/8" = 1'-0"

- NOTES:**
1. ALL PIPES AS SHOWN RUN BELOW SLAB UNLESS NOTED OTHERWISE.
  2. SLOPE ALL BUILDING STORM LINES 1/4" PER FOOT.
  3. SLOPE ALL BUILDING SANITARY LINES 1/8" PER FOOT.
  4. ENCLOSE COLD WATER RISER VALVES IN PRECAST CONCRETE VALVE BOXES.



**DRY WELL DETAIL**  
N.T.S.

**J. J. CLARET**  
 ARCHITECT  
 4450 GULF OF MEXICO DRIVE  
 SARASOTA, FLORIDA 33577

---

LONGBOAT HARBOUR TOWERS  
 LONGBOAT KEY FLORIDA  
 AN I. Z. MANN & ASSOCIATES PROJECT

---

NORTH  
 GROUND FLOOR PLAN  
 OF 2 SHEETS

---

M-2

**LOUIS J. MANN AND ASSOCIATES**  
 CONSULTING ENGINEERS  
 210 N.W. 7th St., Miami, Fla. • TEL. 640-9444