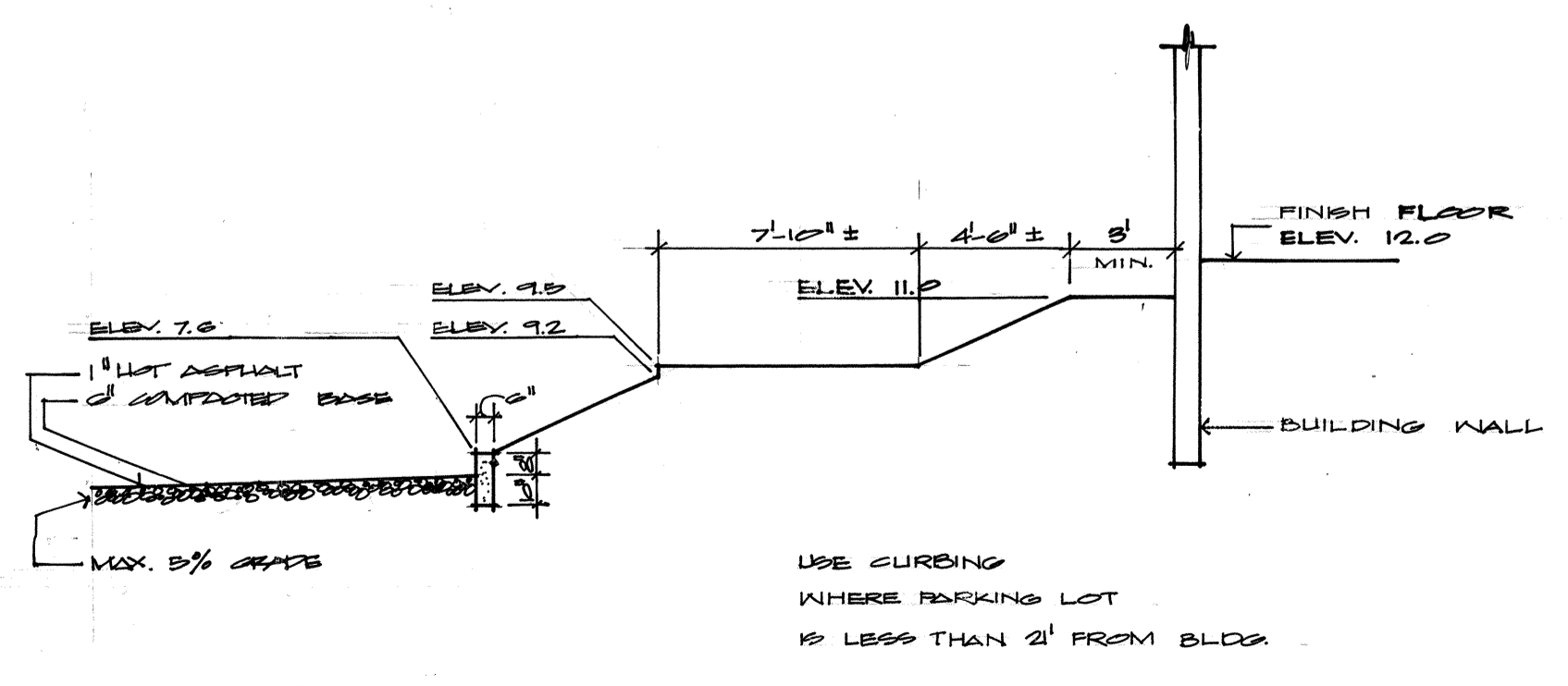
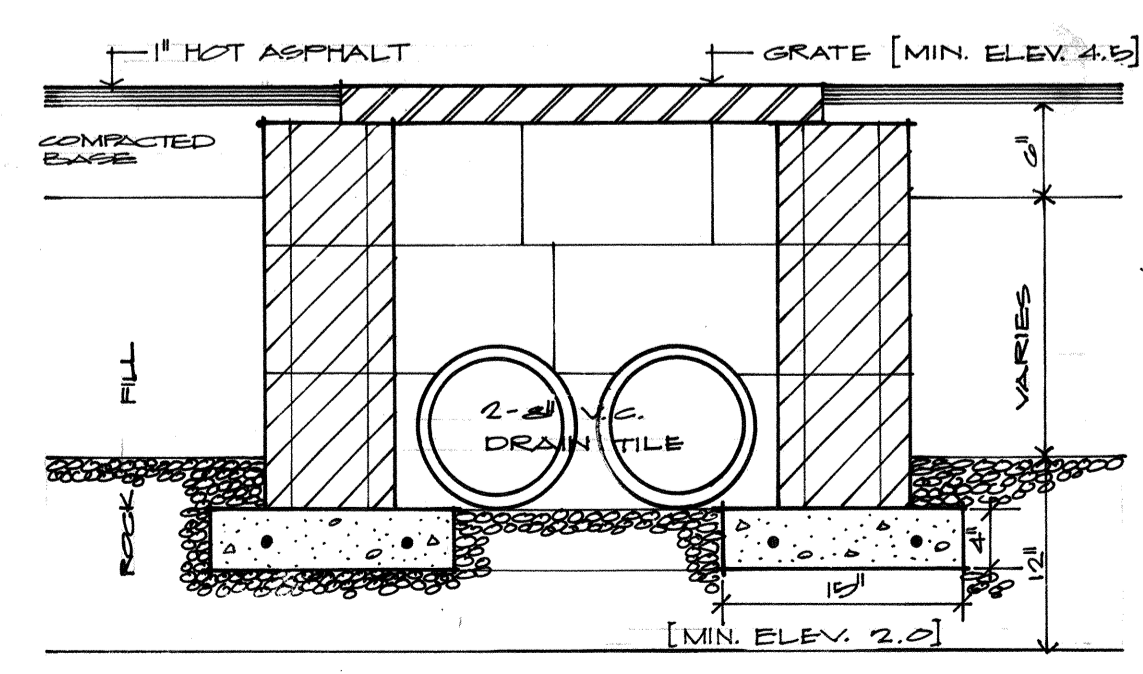


M.H.W.L.
EL. 1.48'
MARCH 13, 1973

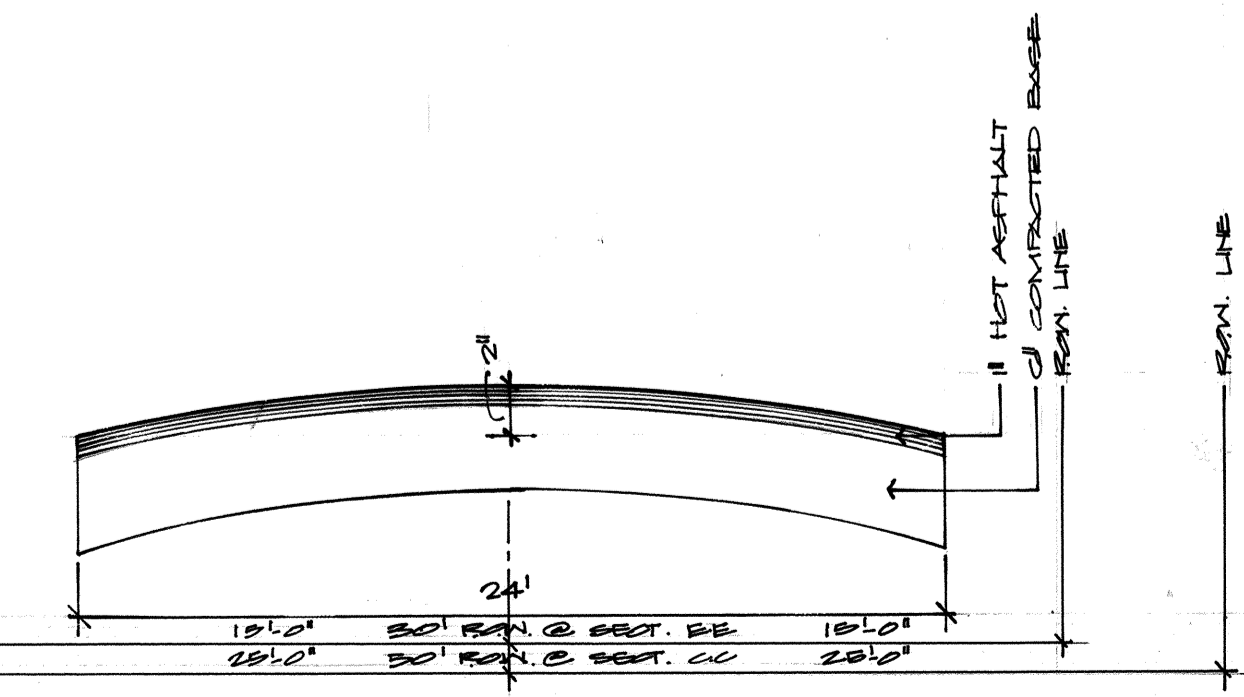
**AS BUILT
SITE DRAINAGE PLAN**
1"=50'



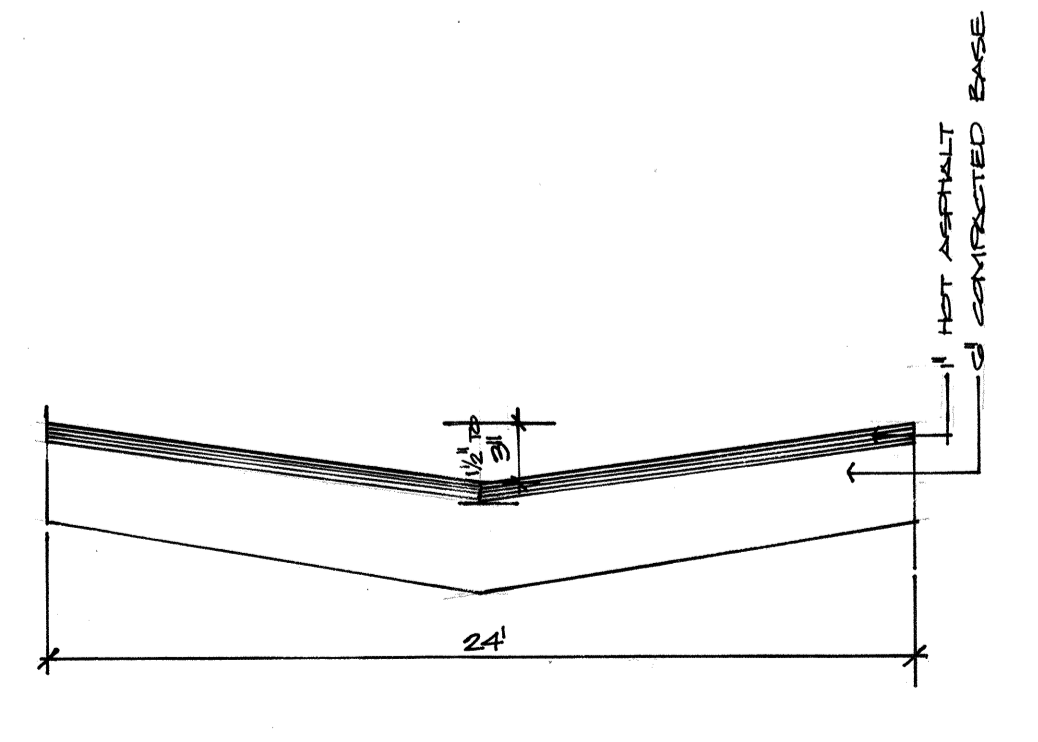
DETAIL A-A / TYPICAL GRADING SECTION



DETAIL B-B / TYPICAL PERCOLATION AREA



DETAIL C-C / TYPICAL CROWN ROAD



DETAIL D-D / TYPICAL INVERTED CROWN ROAD

DESIGNED BY PROJECT ENGINEER James R. Kennedy	DATE: 9-18-74	SCALE: 1"=50'	BY	LTR. DATE	REVISION	TOWN OF LONGBOAT KEY, FLORIDA
CHECKED BY D.A.H.	G.A.H.	M.M.				LONGBEACH VILLAGE NORTH
DRAWN BY PROJECT NO. 53-A1B	G.A.H.	M.M.				GULF OF MEXICO DRIVE LONGBOAT KEY, FLORIDA
						ENGINEER REGISTRATION NO. 10000
						BRADENTON, FLORIDA 33507
						TRIAD TECH., INC. 6111 - 15th STREET EAST
						SHEET NUMBER 4
						REVISION
						T.L.K. FILE NO.