

PARKING = 2 PARKING SPACES PER UNIT (BENEATH UNIT)

EASEMENTS FOR WATER AND SEWER ARE WITHIN THE COMMON ELEMENTS.

AREA OF RECREATIONAL FACILITIES:

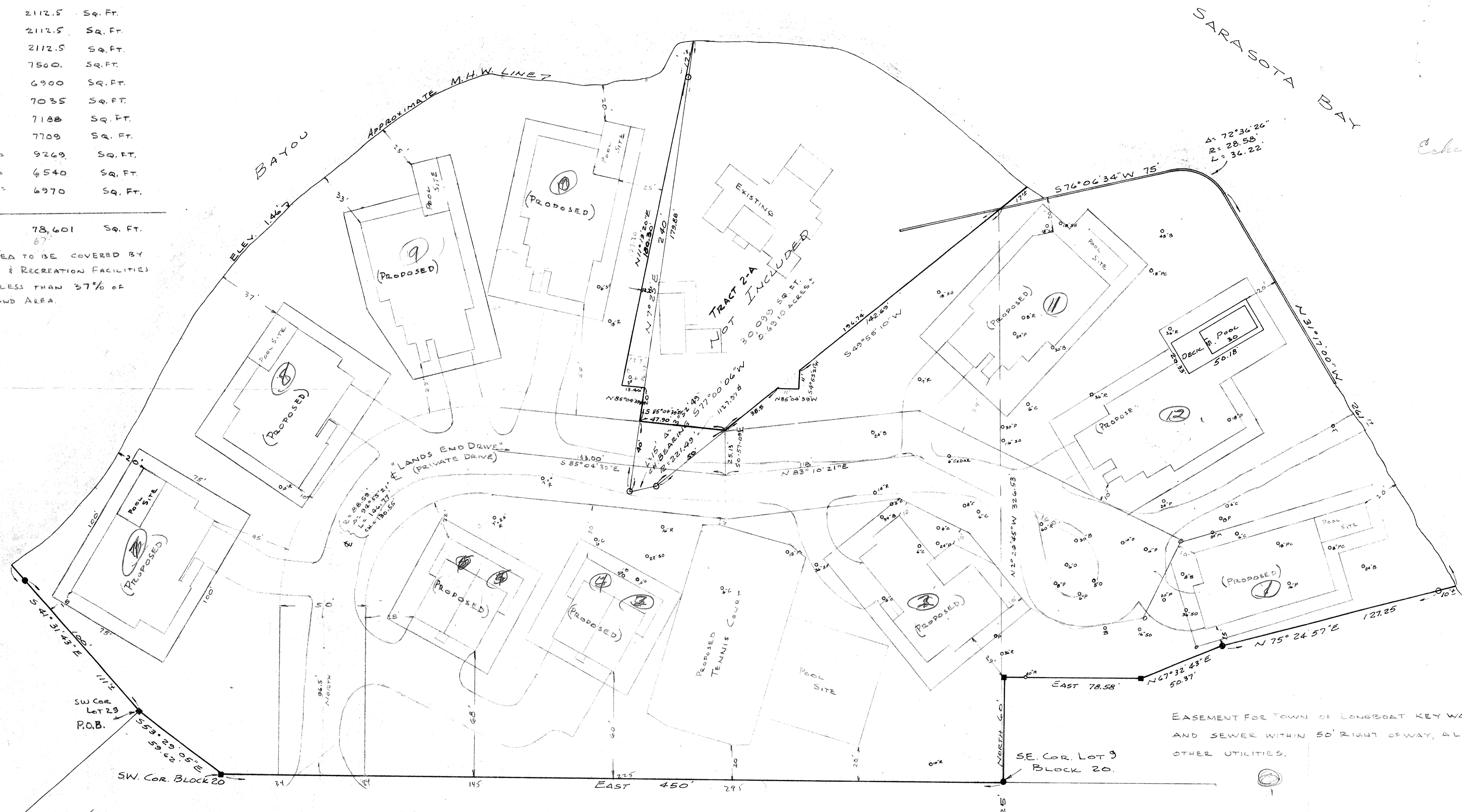
TENNIS COURT = 7440 SQUARE FEET  
 POOL AREA = 3600 SQUARE FEET  
 TOTAL = 11,040 SQ. FT.

AREA OF UNITS:

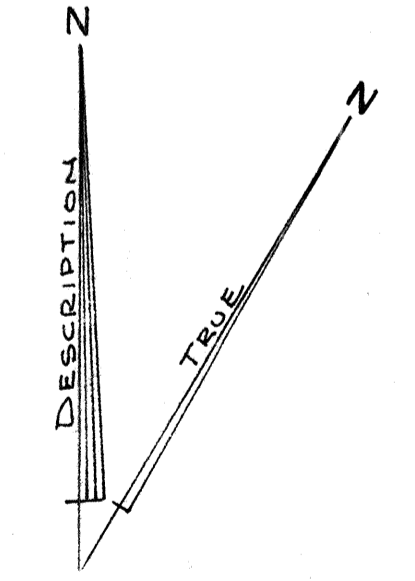
- 1 = 2112.5 SQ. FT.
- 2 = 2112.5 SQ. FT.
- 3 = 2112.5 SQ. FT.
- 4 = 2112.5 SQ. FT.
- 5 = 7500. SQ. FT.
- 6 = 6900 SQ. FT.
- 7 = 7035 SQ. FT.
- 8 = 7188 SQ. FT.
- 9 = 7709 SQ. FT.
- 10 = 9269 SQ. FT.
- 11 = 6540 SQ. FT.
- 12 = 6970 SQ. FT.

TOTAL 78,601 SQ. FT.

TOTAL AREA TO BE COVERED BY BUILDINGS & RECREATION FACILITIES WILL BE LESS THAN 37% OF TOTAL LAND AREA.



EASEMENT FOR TOWN OF LONGBOAT KEY WATER AND SEWER WITHIN 50' RIGHT OF WAY, ALSO OTHER UTILITIES.



SCALE: 1" = 30'



OFFICE SET

George L. Uffner  
 GEORGE L. UFFNER  
 REGISTERED LAND SURVEYOR  
 FLORIDA LICENSE NO. 1795

NOTE: ELEVATIONS BASED ON CITY OF LONGBOAT KEY BENCH MARK DATUM.

A SKETCH OF A SURVEY OF  
 "LANDS END"  
 SECTION 15, TOWNSHIP 35 SOUTH, RANGE 16 EAST.  
 CITY OF LONGBOAT KEY, MANATEE COUNTY  
 STATE OF FLORIDA

TOTAL: 241,334 SQ. FT. OR 5.5540 ACRES (INCLUDING TRACT 2-A)  
 LESS - 30,099 SQ. FT. TRACT 2-A  
 211,235 SQ. FT. OR 4.863 ACRES, AREA OF P.U.D. APPLICATION  
 ZONING R-1B = 3 UNITS PER ACRE OR 14,589 UNITS PER 4.863 ACRES.

- LEGEND-
- RECLINATA PALM
  - CAJON
  - SLY
  - BANYAN
  - ROBINIANA
  - SILVER OAK
  - SPANGLER FIG
  - SLAGLE
  - MANGROVE
  - ORCHID TREE
  - BP