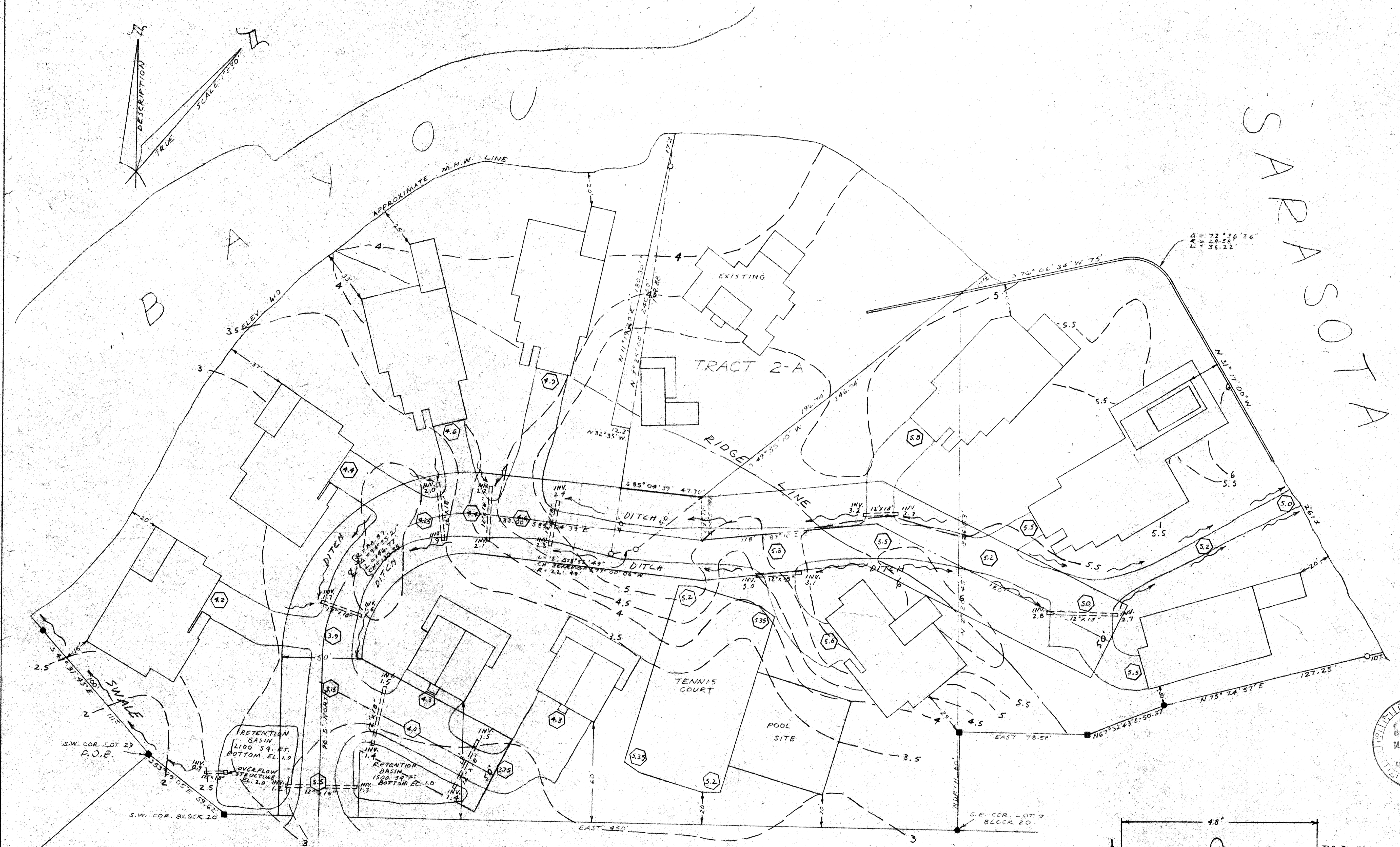


SARASOTA  
BAY



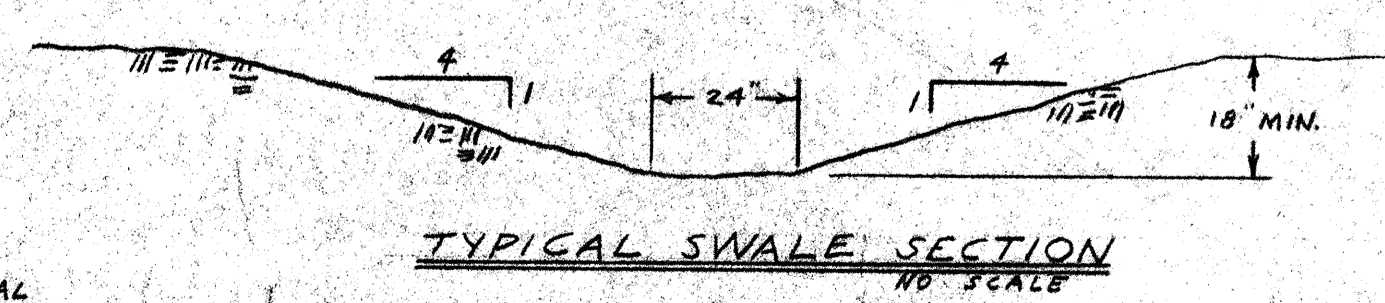
LOCATION MAP  
SCALE: 1" = 24,000'

**DRAINAGE CALCULATIONS**  
 AREA OF STREETS & ROOFS - 41,135 FT<sup>2</sup> - 32%  
 AREA OF YARDS - 87,374 FT<sup>2</sup> - 68%  
 AREA SOUTH OF RIDGELINE - 128,511 FT<sup>2</sup> - 100%  
 "C" FACTORS:  
 STREETS & ROOFS 0.9  
 YARDS 0.05  
 WEIGHTED "C" (0.32x0.9) + (0.68x0.05) = 0.322  
 10 YEAR STORM  $\Rightarrow L = 5.8$   
 RUNOFF  $Q = AC^X$   
 $Q = 128,511 \times 0.322^{5.8} = 5.5 \text{ cfs}$   
 RETENTION VOLUME (12" INCH)  
 $128,511 \text{ FT}^2 \times 0.322 \times 0.0833 \text{ FT} = 3448 \text{ FT}^3$   
 BASIN AREA - 3600 FT<sup>2</sup>  
 BASIN DEPTH -  $\frac{3448 \text{ FT}^3}{3600 \text{ FT}^2} = 0.96 \text{ FT}$

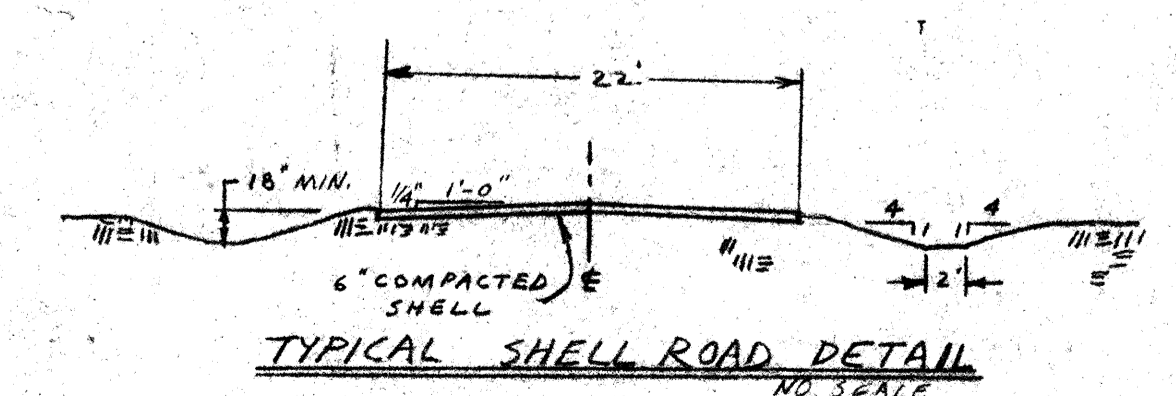


TOWN OF LONGBOAT KEY  
BENCHMARK #54 EL. 3.06

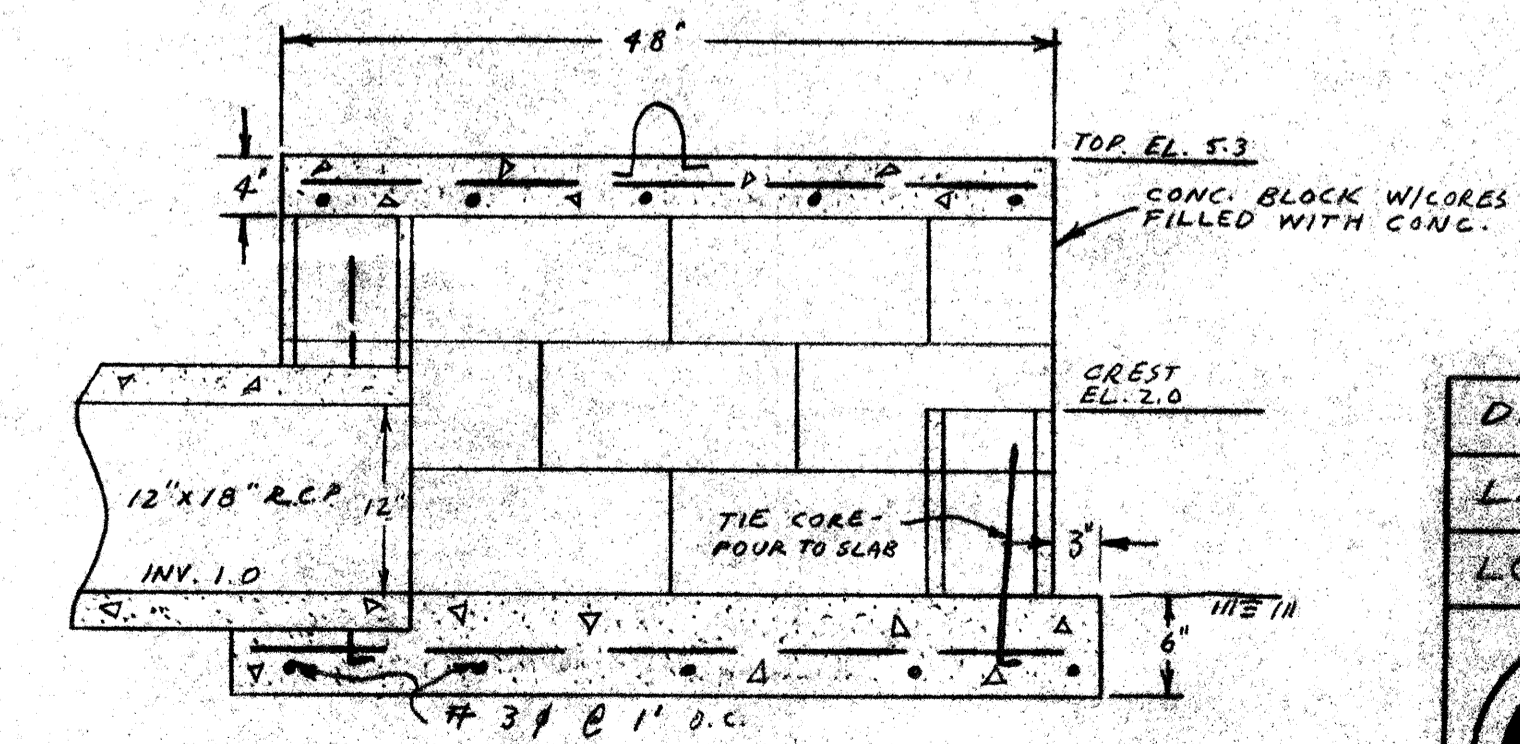
**NOTES:**  
 ALL STORM PIPES SHALL BE 12" X 18" OVAL REINFORCED CONCRETE PIPE MEETING ASTM C 507 - 63T STANDARDS.



TYPICAL SWALE SECTION  
NO SCALE



TYPICAL SHELL ROAD DETAIL  
NO SCALE



OVERFLOW STRUCTURE DETAIL  
NO SCALE

DRAINAGE		
LAND'S END		
LONGBOAT KEY, FLORIDA		
<b>TRIAD TECH., INC.</b>		
6027 17TH STREET EAST BRADENTON, FLA. 33507 PHONE: 756-6311		
DATE 5-3-77	SCALE 1" = 30'	DRAWN BY D.L.S.
APPROVED 	FLORIDA REGISTERED ENGINEER NO. 6500	SHEET 1 OF 2