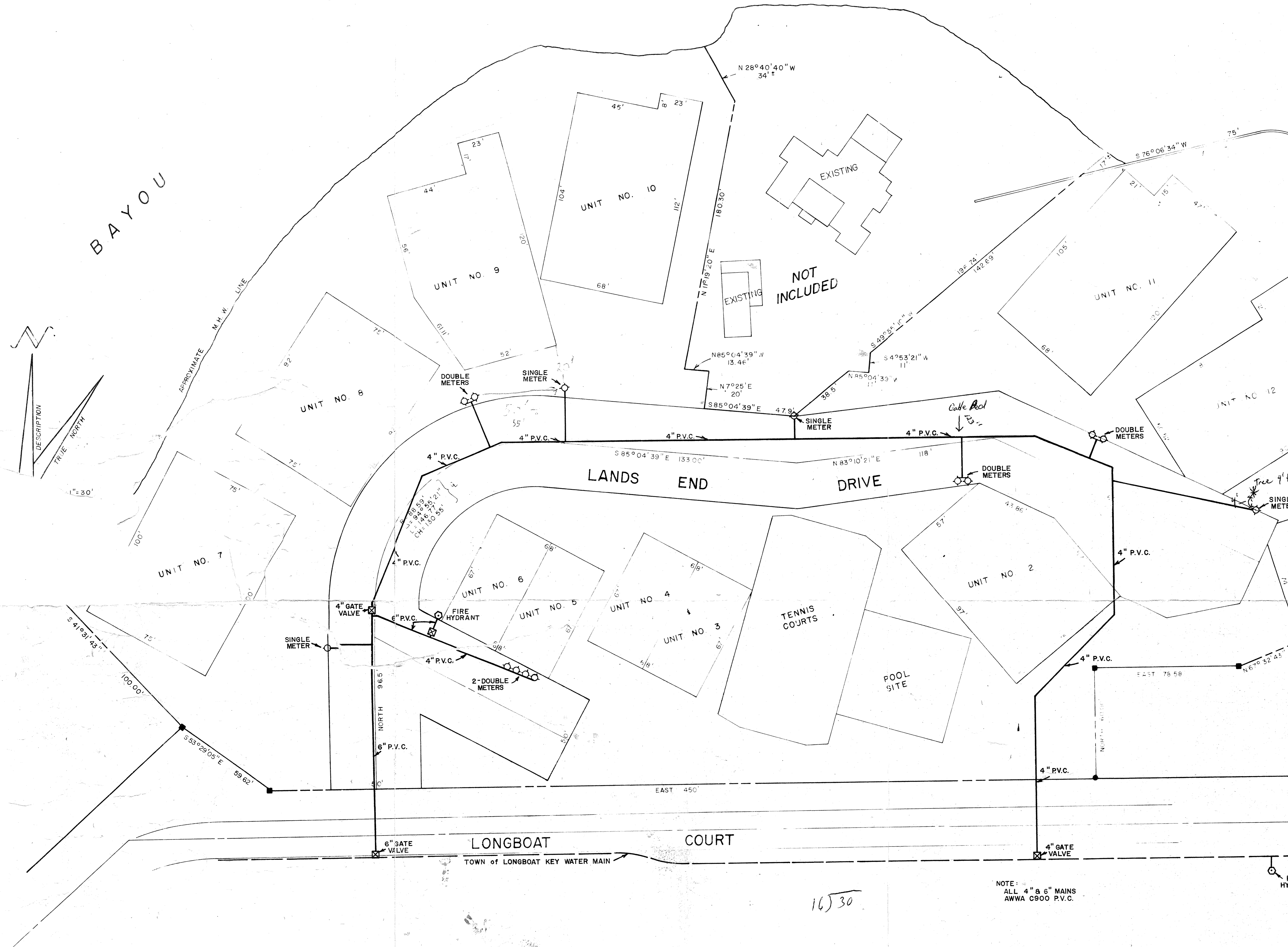
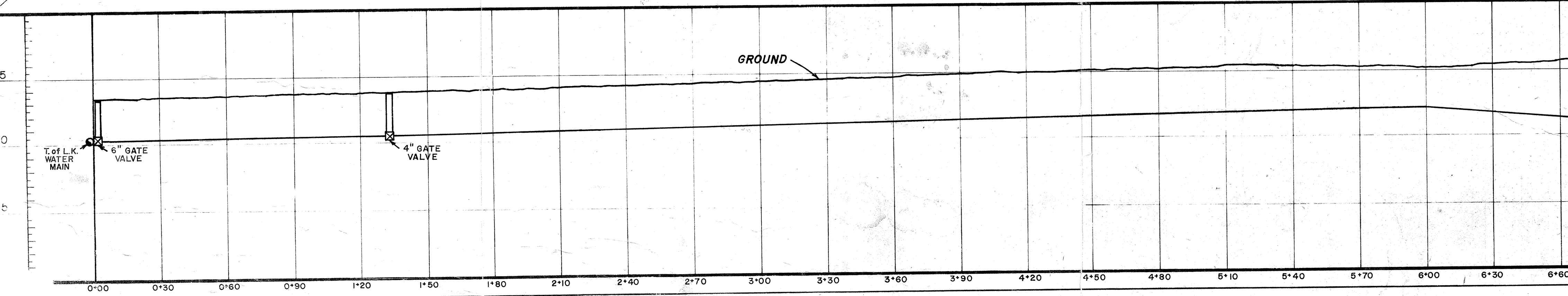


BAYOU

SARASOTA BAY



R = 28.58'
 Δ = 72° 26'
 L = 36.22'



SKETCH OF:
SANITARY SEWER AS-BUILT

The sketch shows a detailed view of the sanitary sewer system for Unit 2. It includes the 'LANDS END CONDOMINIUM' and 'LANDS END DRIVE'. The sketch shows the sewer line layout, including manholes, valves, and pipe segments. Key features include a 'SAN. MAN. HOLE' with a rim elevation of 5.53 and a flow line of 0.33. Another manhole is shown with a rim elevation of 6.08 and a flow line of 0.04. The sketch also shows the 'LONGBOAT COURT NORTH (PAYNE ST.)' and a 'SAN. MAN. HOLE' with a rim elevation of 2.33 and a flow line of -1.28. A note indicates that the elevations shown are based on Florida Dept. of Natural Resources BM 13 84 B07, El. + 4.15 - NAVD DATUM, 1929.

NOTE: ALL 4" & 6" MAINS
 AWWA C900 P.V.C.

FOR THE EXCLUSIVE USE OF:
LANDS END CORPORATION

PRECISION SURVEYING, INC.
 Professional Land Surveyors
 8400 MANATEE AVENUE WEST, SUITE "H"
 BRADENTON, FLORIDA 33529 PHONE 794-5700

CERTIFICATE OF SURVEYOR
 I, THE UNDERSIGNED REGISTERED LAND SURVEYOR, DO HEREBY CERTIFY THAT THIS PLAT IS A TRUE REPRESENTATION OF THE LANDS SHOWN AND DESCRIBED HEREON ACCORDING TO A SURVEY MADE UNDER MY DIRECTION AND SUPERVISION AND THAT THIS SURVEY MEETS THE MINIMUM TECHNICAL STANDARDS FOR LAND SURVEYING IN THE STATE OF FLORIDA (CHAPTER 2111-6, F.A.C.)
 DATE OF SURVEY: 08-28-86
 LEONARD P. WOOD P.L.S.
 FLORIDA CERT. NO. 1469
 NOTE: NOT VALID UNLESS IMPRINTED WITH EMBOSSED SURVEYORS SEAL

REVISION	DATE:	DESIGNED BY:	PROJECT ENGINEER:
	7/7/78	D.A.H.	
BY:	SCALE:	CHECKED BY:	PROJECT NO.:
	1" = 30'	W.W.G.W.	218

ENGINEER: DALE A. HAAS / TRAD TECH, INC. / 6027 - 17TH STREET EAST / BRADENTON, FLORIDA 33508 / PHONE: (813) 756-6311