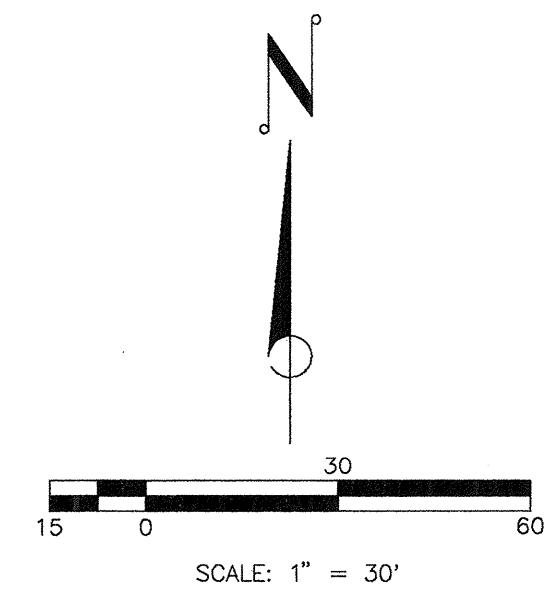
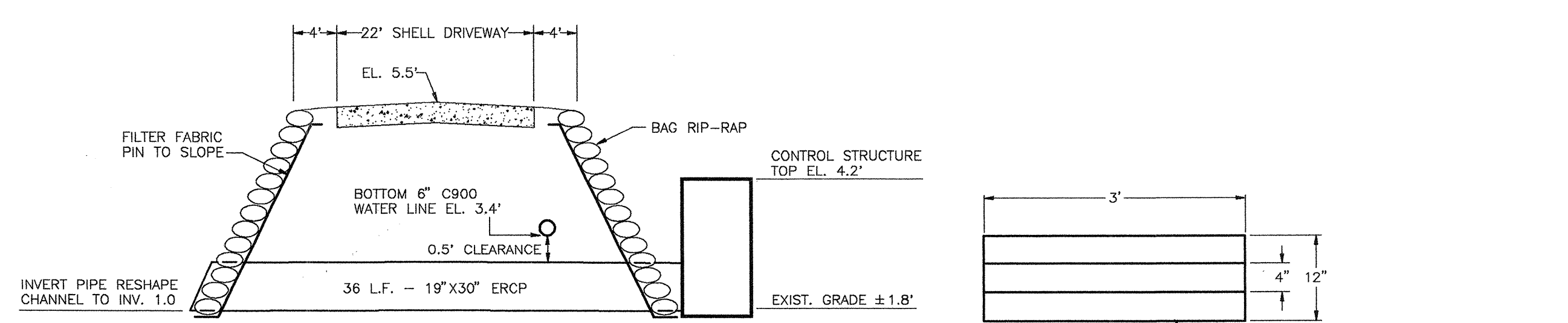


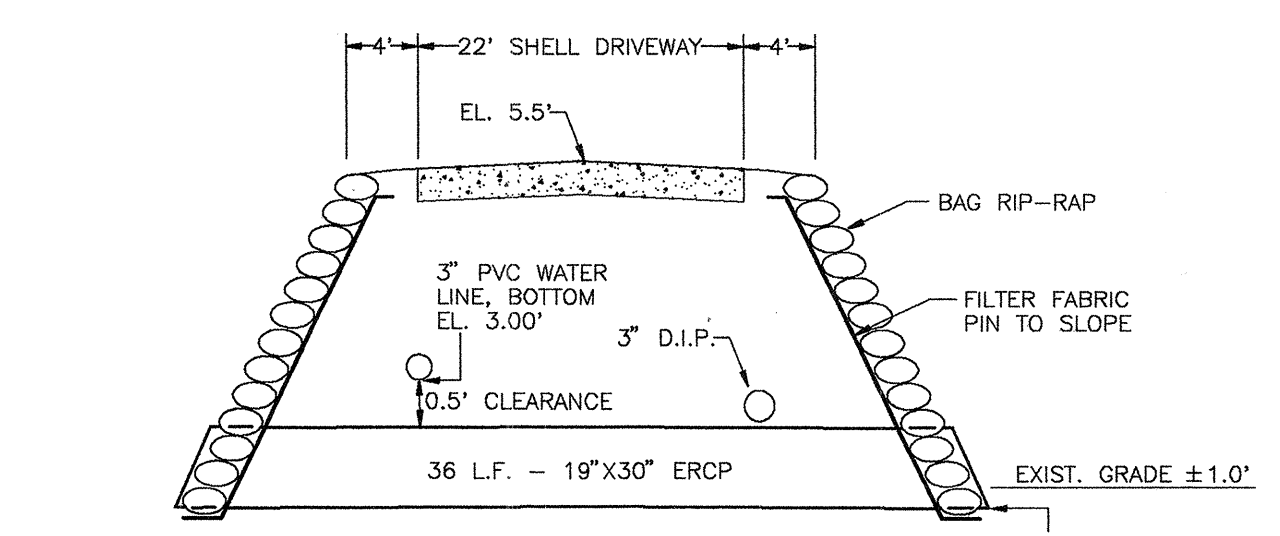
HIDEAWAY BAY SUBDIVISION
PLAT BOOK 19, PAGES 82-85



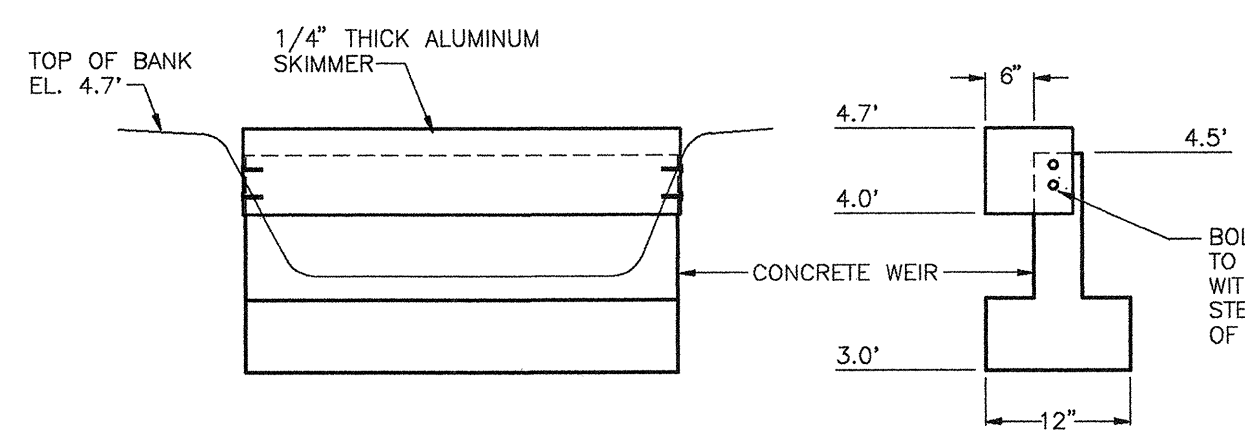
NOTE: SILT SCREEN TO BE A MINIMUM OF 1' ON UPLAND SIDE OF THE JURISDICTIONAL LINE.



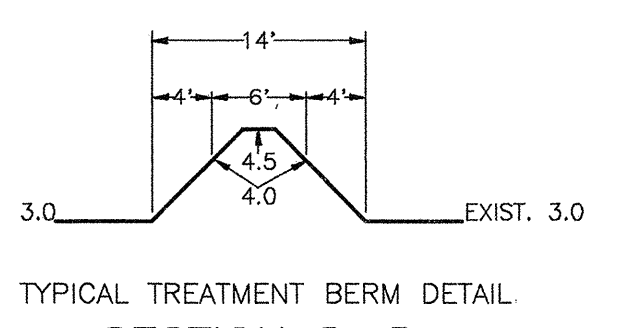
SECTION A-A
N.T.S.



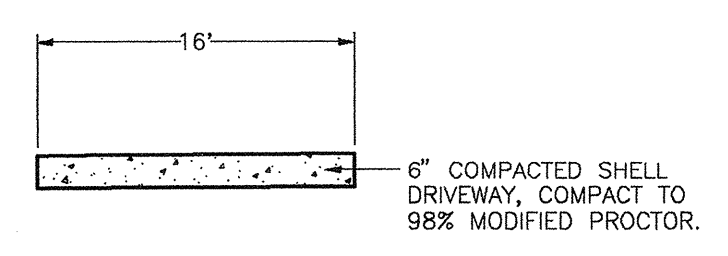
SECTION B-B
N.T.S.



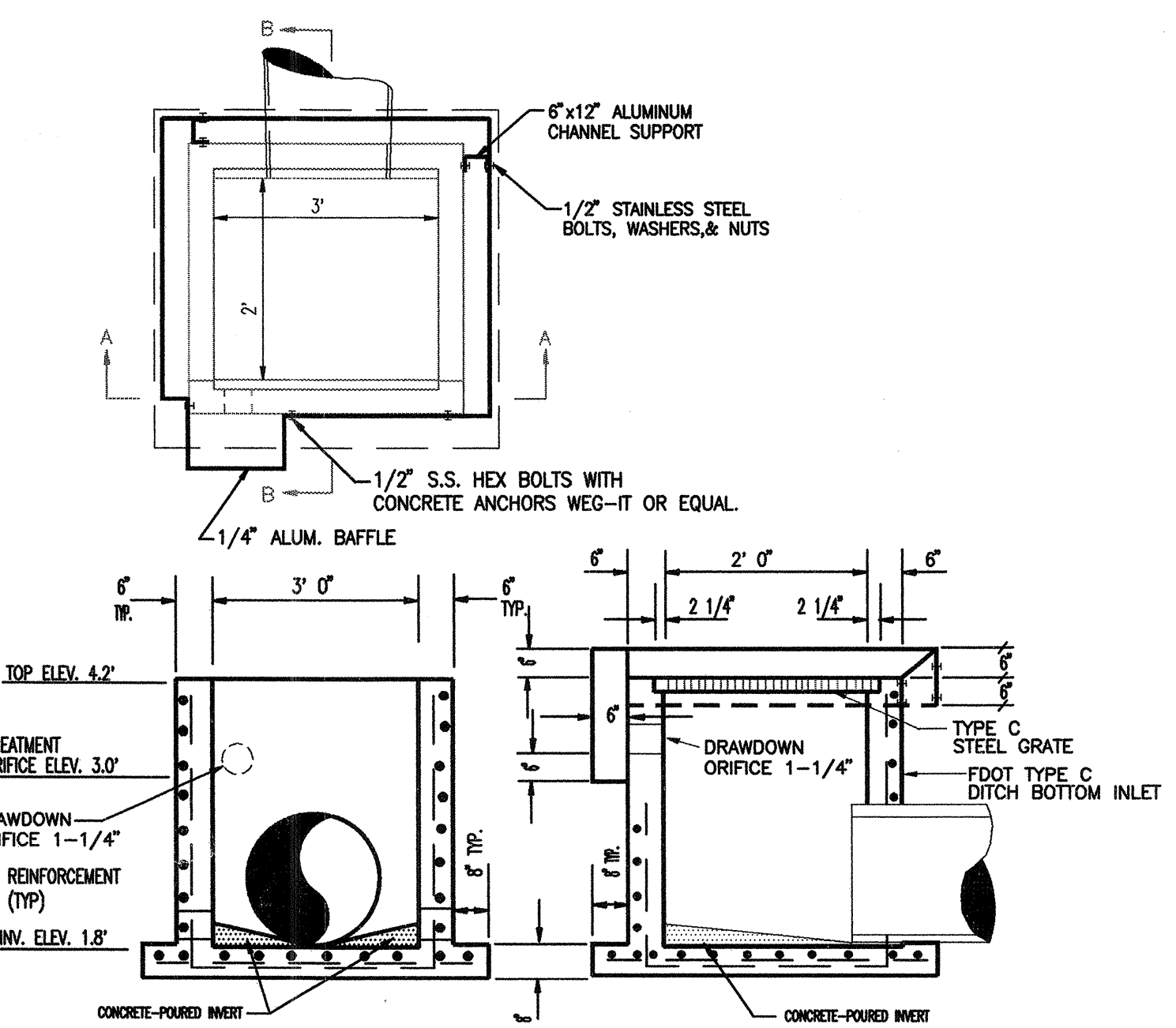
CONCRETE WEIR DETAIL
N.T.S.



SECTION D-D
N.T.S.

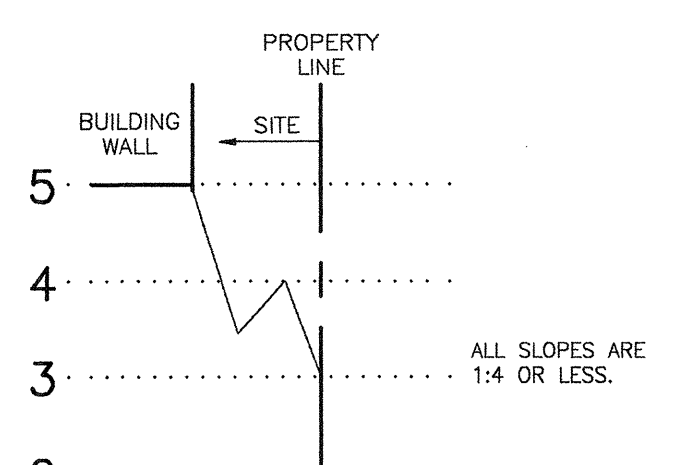


SECTION C-C
N.T.S.

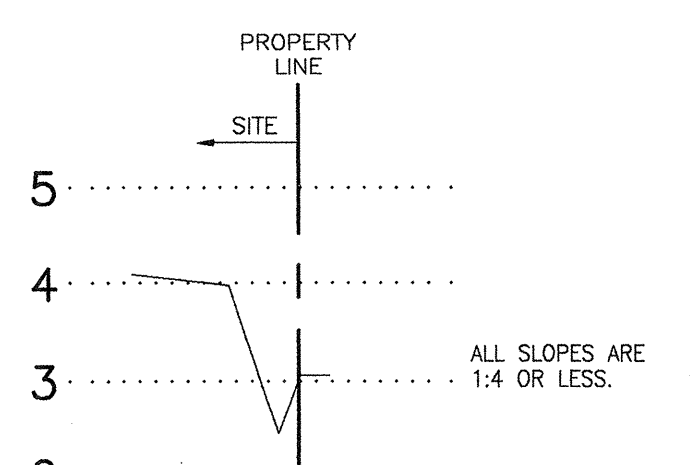


CONTROL STRUCTURE DETAIL
N.T.S.

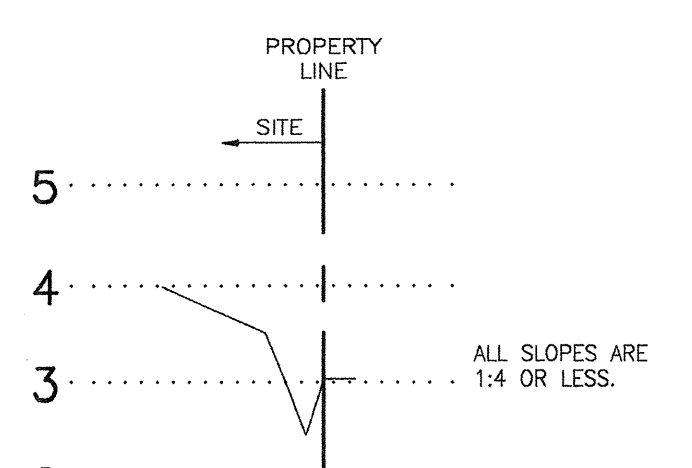
NOTES
1. ALL REINFORCEMENT PER FOOT INDEX 200



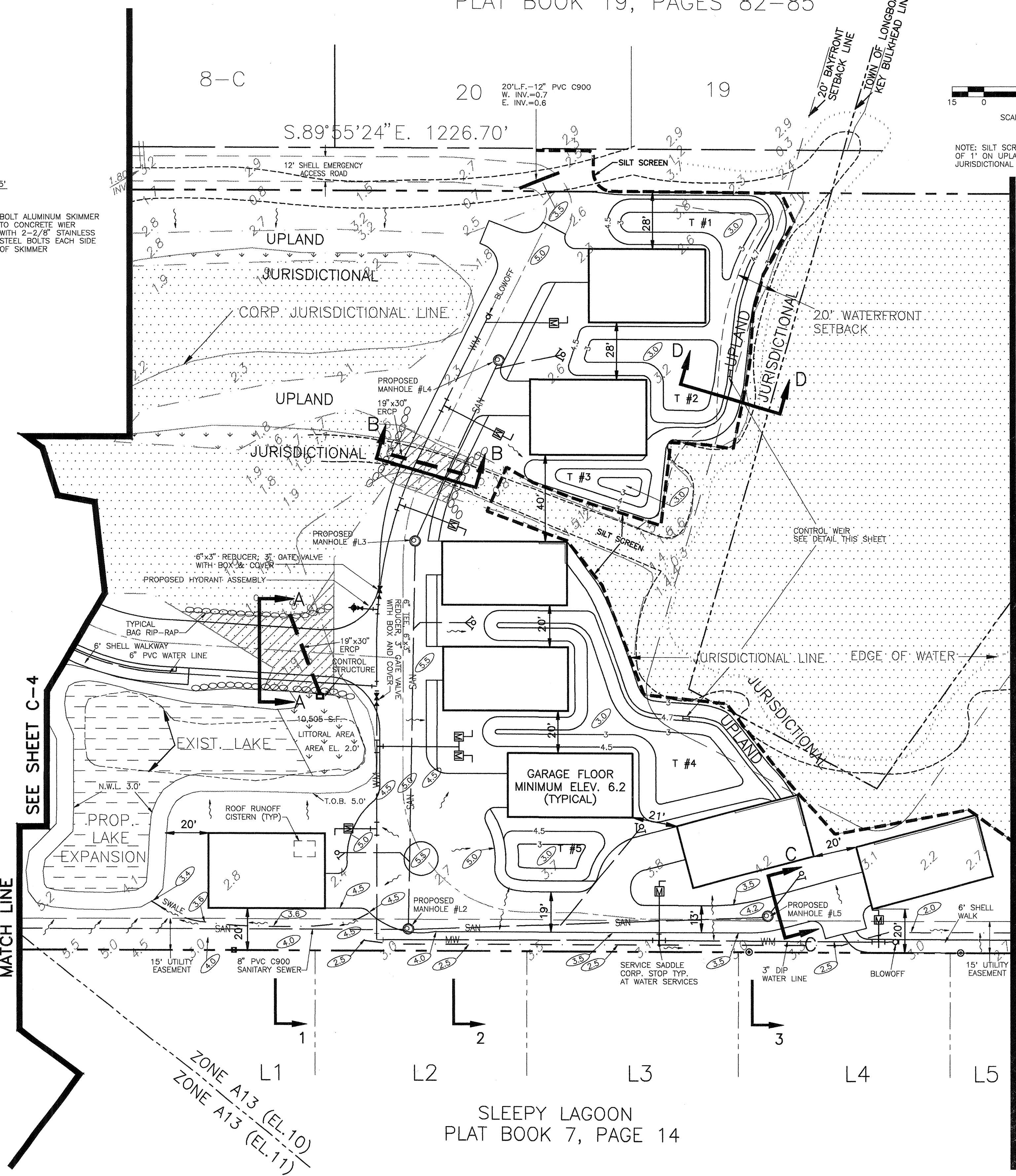
SECTION 1
SCALE: 1\"/>



SECTION 2
SCALE: 1\"/>



SECTION 3
SCALE: 1\"/>



SLEEPY LAGOON
PLAT BOOK 7, PAGE 14

MATCH LINE SEE SHEET C-6

LAGUNA AT LONGBOAT KEY
CONSTRUCTION PLANS
SITE PLAN AND DETAILS

DATE	BY	DESCRIPTION
3/18/97	DBH	REVISE HYDRANT NOTE
7/20/98	DBH	ADD ACCESS ROAD
7/16/98	DBH	REV. GRADES, ADD SWALES & SECTIONS
6/17/98	DBH	REV. PER TLRK. PUBLIC WORKS REVIEW
11/6/97	DBH	REV. CONTROL STRUCTURE
7/16/97	DBH	REV. POND, ADD CONT. STRUCT. AND DETAIL
7/9/97	DBH	

LANDRY & ESBER
Engineers & Surveyors
5840 Palmetto Blvd., Sarasota, FL 34232
(941)579-0551 • Fax: (941)579-0556

APPROVED: *[Signature]* DATE: 7/14/98
ENGINEER OF RECORD
NOT ISSUED FOR CONSTRUCTION

PROJECT NO: BC2501
SHEET NO: C-5