

SANITARY SEWER PROFILE

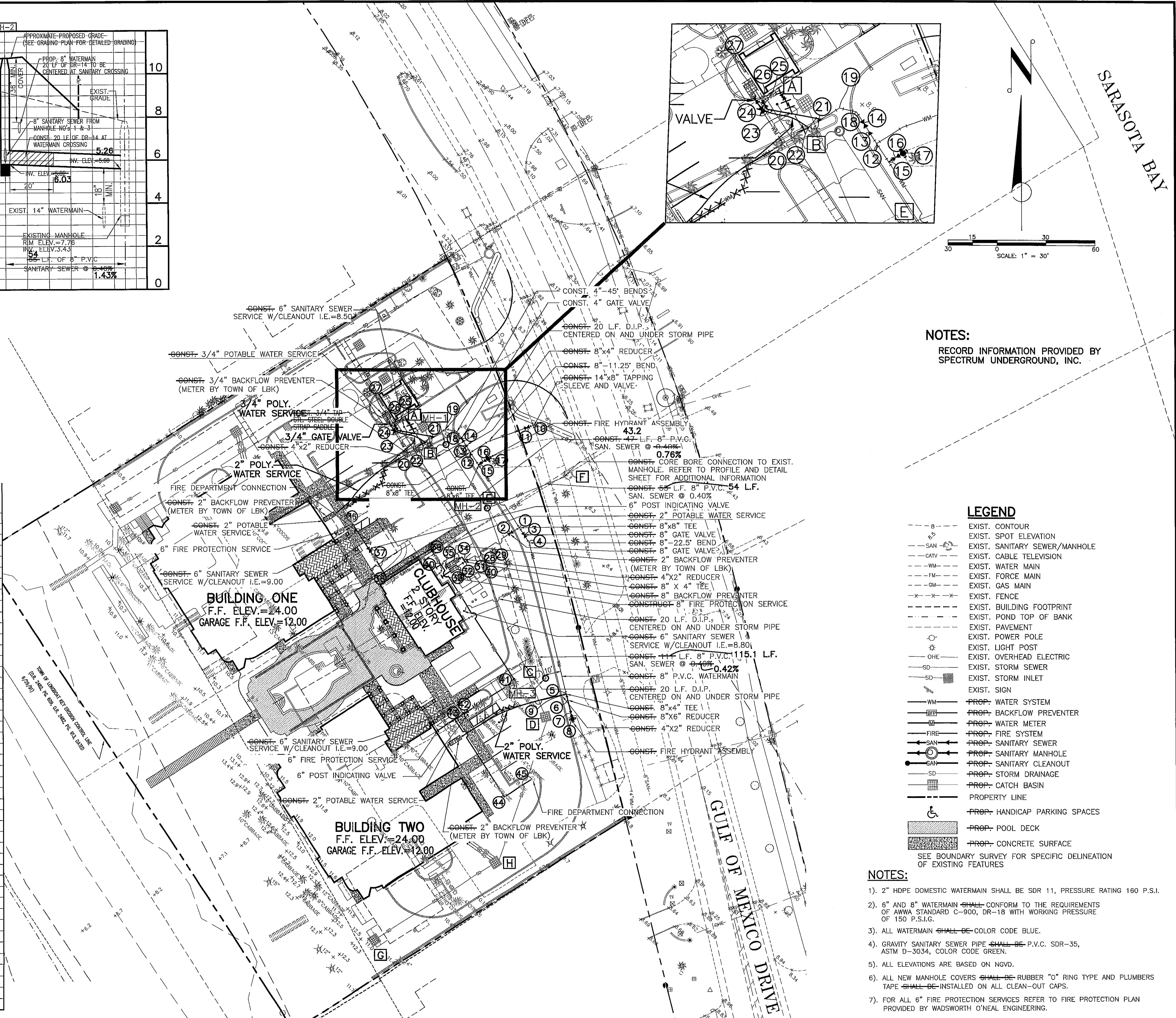
SCALE: 1" = 20' HORIZ.
1" = 2' VERT.

PROP. SANITARY MH. NO. 1
RIM ELEV.=10.5510.53
INV. ELEV.=6.14 (SE) 6.42

PROP. SANITARY MH. NO. 2
RIM ELEV.=10.7710.77
INV. ELEV.=5.92 (SE) 6.09
INV. ELEV.=5.92 (NW) 6.09
INV. ELEV.=5.82 (NE) 6.03

PROP. SANITARY MH. NO. 3
RIM ELEV.=10.5510.59
INV. ELEV.=6.36 (NW) 6.57

		CURB INLET S-4	MANHOLE #1	MANHOLE #3	CURB INLET S-5	MANHOLE #2	EXISTING SAN. MANHOLE	CATCH BASIN S-9	CATCH BASIN S-6	RECORD ELEVATION	
		A	B	C	D	E	F	G	H		
1	8" TEE	85.50'	87.60'							7.80	
2	8" GATE VALVE	85.40'	87.90'							9.14	
3	8" GATE VALVE	88.10'	70.40'							9.14	
4	8" 22 1/2" BEND	96.50'	79.70'							7.85	
5	8"x8" TEE			15.60'	19.10'					7.54	
6	8"x6" REDUCER			18.50'	16.80'					7.44	
7	6" GATE VALVE			24.00'	16.00'					8.24	
8	FIRE HYDRANT			30.30'	17.20'						
9	2" TAP			18.50'	18.30'					7.56	
10	14"x8" TEE			56.00'			36.00'			5.96	
11	8" GATE VALVE			54.60'			36.60'			5.50	
12	8"x8" TEE			18.50'		29.00'				7.53	
13	8"x4" REDUCER			16.33'		31.50'				7.34	
14	4" GATE VALVE			14.67'		33.75'				8.19	
15	8"x6" TEE			24.50'		22.33'				7.67	
16	6" GATE VALVE			25.08'		22.75'				8.73	
17	FIRE HYDRANT										
18	45° BEND			11.00'		46.00'				7.99	
19	45° BEND			11.08'		53.00'				7.93	
20	4"x2" REDUCER	6.00'								7.90	
21	4"x2-1/2" TAP SADDLE	7.00'								7.90	
22	2-1/2" 45° BEND	4.67'								7.74	
23	2-1/2" 90° BEND	6.42'									
24	2-1/2" 45° BEND	11.67'								7.78	
25	2-1/2" GATE VALVE	14.67'								7.90	
26	2-1/2" 45° BEND	18.08'								7.92	
27	BACKFLOW PREVENTER	22.00'								7.80	
28	8" 45° BEND (VERT.)			88.30'		28.70'				7.84	
29	8" 45° BEND (VERT.)			88.20'		30.30'				5.06	
30	8" 45° BEND (VERT.)			87.60'		33.10'				5.08	
31	8" 45° BEND (VERT.)			87.20'		35.40'				8.14	
32	8"x4"x8" TEE			87.40'		36.90'				8.12	
33	8" 45° BEND (VERT.)			87.40'		38.40'				8.30	
34	4"x2" REDUCER			89.90'		35.20'				8.24	
35	2" 90° BEND			87.70'		38.50'				8.41	
36	6" 90° BEND			72.70'		81.70'				6.76	
37	6" POST INDICATING VALVE			83.42'		78.42'				A.G.	
38	6" 90° BEND			87.00'		72.00'				7.46	
39	6" 90° BEND			64.00'		41.50'				6.72	
40	6"x6" TEE			71.50'		43.00'				6.68	
41	6" 90° BEND					30.00'	113.00'			7.42	
42	6" POST INDICATING VALVE					48.00'	130.00'			A.G.	
43	6"x6" TEE			71.50'		43.00'		61.00'	90.00'	9.26	
44	6" 90° BEND					30.00'	113.00'		60.00'	8.32	
45	FIRE CONNECTION					48.00'	130.00'		38.00'	56.00'	A.G.



NOTES:
RECORD INFORMATION PROVIDED BY SPECTRUM UNDERGROUND, INC.

LEGEND

---	8	EXIST. CONTOUR
---	SPOT	EXIST. SPOT ELEVATION
---	SAN	EXIST. SANITARY SEWER/MANHOLE
---	CATV	EXIST. CABLE TELEVISION
---	WM	EXIST. WATER MAIN
---	FM	EXIST. FORCE MAIN
---	GM	EXIST. GAS MAIN
---	---	EXIST. FENCE
---	---	EXIST. BUILDING FOOTPRINT
---	---	EXIST. POND TOP OF BANK
---	---	EXIST. PAVEMENT
---	---	EXIST. POWER POLE
---	---	EXIST. LIGHT POST
---	---	EXIST. OVERHEAD ELECTRIC
---	---	EXIST. STORM SEWER
---	---	EXIST. STORM INLET
---	---	EXIST. SIGN
---	---	PROP. WATER SYSTEM
---	---	PROP. BACKFLOW PREVENTER
---	---	PROP. WATER METER
---	---	PROP. FIRE SYSTEM
---	---	PROP. SANITARY SEWER
---	---	PROP. SANITARY MANHOLE
---	---	PROP. SANITARY CLEANOUT
---	---	PROP. STORM DRAINAGE
---	---	PROP. CATCH BASIN
---	---	PROPERTY LINE
---	---	PROP. HANDICAP PARKING SPACES
---	---	PROP. POOL DECK
---	---	PROP. CONCRETE SURFACE

- NOTES:**
- 2" HDPE DOMESTIC WATERMAIN SHALL BE SDR 11, PRESSURE RATING 160 P.S.I.
 - 6" AND 8" WATERMAIN SHALL CONFORM TO THE REQUIREMENTS OF AWWA STANDARD C-900, DR-18 WITH WORKING PRESSURE OF 150 P.S.I.G.
 - ALL WATERMAIN SHALL BE COLOR CODE BLUE.
 - GRAVITY SANITARY SEWER PIPE SHALL BE P.V.C. SDR-35, ASTM D-3034, COLOR CODE GREEN.
 - ALL ELEVATIONS ARE BASED ON NGVD.
 - ALL NEW MANHOLE COVERS SHALL BE RUBBER "O" RING TYPE AND PLUMBERS TAPE SHALL BE INSTALLED ON ALL CLEAN-OUT CAPS.
 - FOR ALL 6" FIRE PROTECTION SERVICES REFER TO FIRE PROTECTION PLAN PROVIDED BY WADSWORTH O'NEAL ENGINEERING.

NO.	BY	DATE	DESCRIPTION
1	PSN	2-13-03	REVISED PER TOWN OF LONGBOAT KEY PRELIMINARY REVIEW COMMENTS
2	PSN	2-20-03	REVISED PER TOWN OF LONGBOAT KEY PRELIMINARY REVIEW COMMENTS
3	PSN	3-7-03	REVISED PER TOWN OF LONGBOAT KEY PRELIMINARY REVIEW COMMENTS
4	PSN	3-14-03	REVISED PER TOWN OF LONGBOAT KEY PRELIMINARY REVIEW COMMENTS
5	PSN	4-2-03	REVISED PER TOWN OF LONGBOAT KEY PRELIMINARY REVIEW COMMENTS
6	PSN	5-18-03	REVISED PER FINAL CONSTRUCTION PLAN REVIEW
7	PSN	9-18-03	REVISED PER MANATEE COUNTY COMMENTS DATED 9-15-03

George F. Young, Inc.
ARCHITECTURE • ENGINEERING • ENVIRONMENTAL • LANDSCAPE • PLANNING • SURVEYING • UTILITIES
BROOKHURST • GAINESVILLE • NORTH PALM BEACH • ST. PETERSBURG • SARASOTA • TAMPA
ENGINEERING STATE BUSINESS NO. EB-0000021 • SURVEYING STATE BUSINESS NO. LB-21
78 SARASOTA CENTER BOULEVARD SARASOTA, FLORIDA 34240

DATE: AUG 01 2007

TASK: INITIALS DATE
DESIGN: H.F.F. 1-13-03
DRAWN: P.S.N. 1-24-03
CHECKED: P.S.N. 5-16-03
QUALITY CHK: H.F.F. 5-16-03

PREPARED FOR:
LA FIRENZA, LLC
9853 N. TAMiami TRAIL, SUITE 218
NAPLES, FLORIDA 34108

RECORD DRAWINGS

LA FIRENZA
WATER AND SANITARY SEWER PLAN

JOB NO. **0271007000**
SHEET NO. **R6**

I:\PROJECTS\ENGINEERING\0271-0070-00\DWG\RECORD\0271007000-R06-SANWAT.dwg 7/27/2007 8:55:30 AM, Pete Nibrels