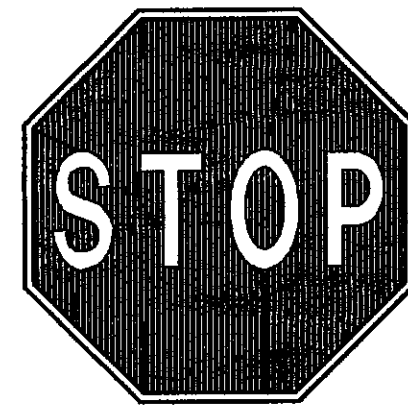


GENERAL NOTES:

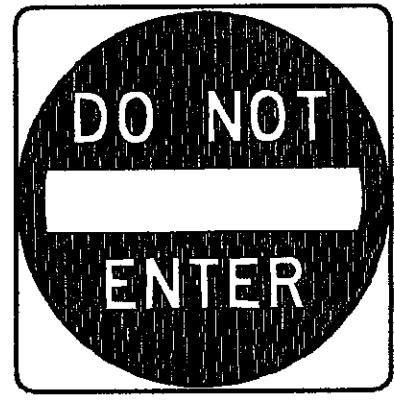
1. ALL TRAFFIC CONTROL PAVEMENT MARKINGS SHALL BE ALKYD THERMOPLASTIC 90 MILS IN THICKNESS.
2. A TWO FOOT WIDE STRIP OF SOD IS TO BE PROVIDED BEHIND ALL CURBS AND PAVEMENT EDGES. SOD OR GRASSING/MULCHING SHALL BE PROVIDED FOR ALL OTHER OPEN AREAS UNLESS NOTED OTHERWISE ON LANDSCAPE PLANS.
3. ALL CONCRETE TO BE A MINIMUM 3000 P.S.I., UNLESS NOTED OTHERWISE ON THE PLANS.

COLOR CODES
 LEGEND (and/or) SYMBOL/BACKGROUND
 B.....Black.....(Non-Reflectorized)
 W.....White.....(Reflectorized)
 R.....Red.....(Reflectorized)

- FTP 25 SIGN NOTES**
- 1) Top portion of FTP 25 Sign shall have a reflective blue background with white reflective symbol and border.
 - 2) Bottom portion shall have a reflective white background with black opaque legend and border.
 - 3) Signs are to be mounted at standard height. (7' from pavement to bottom of sign).



R1-1
W/R



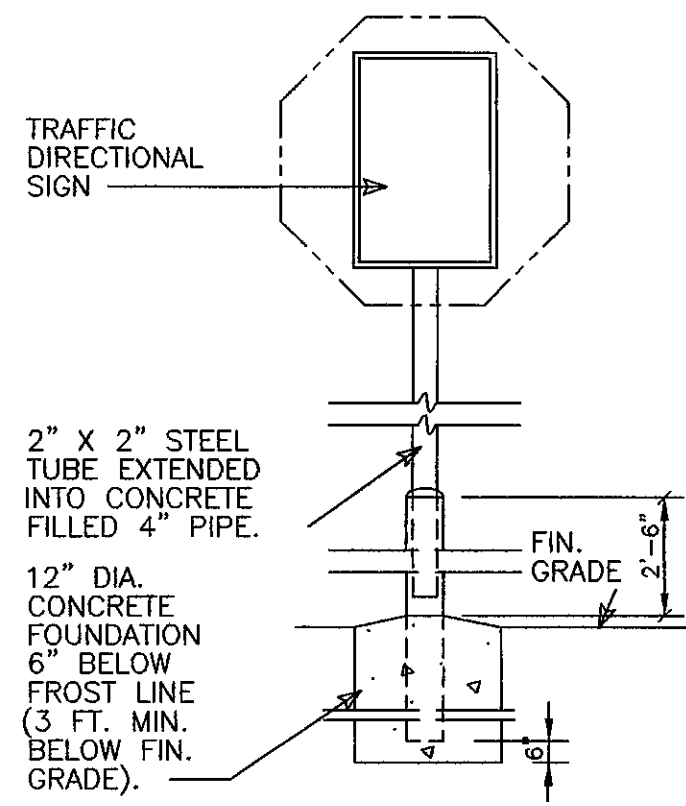
R5-1
WR/W



FTP 25

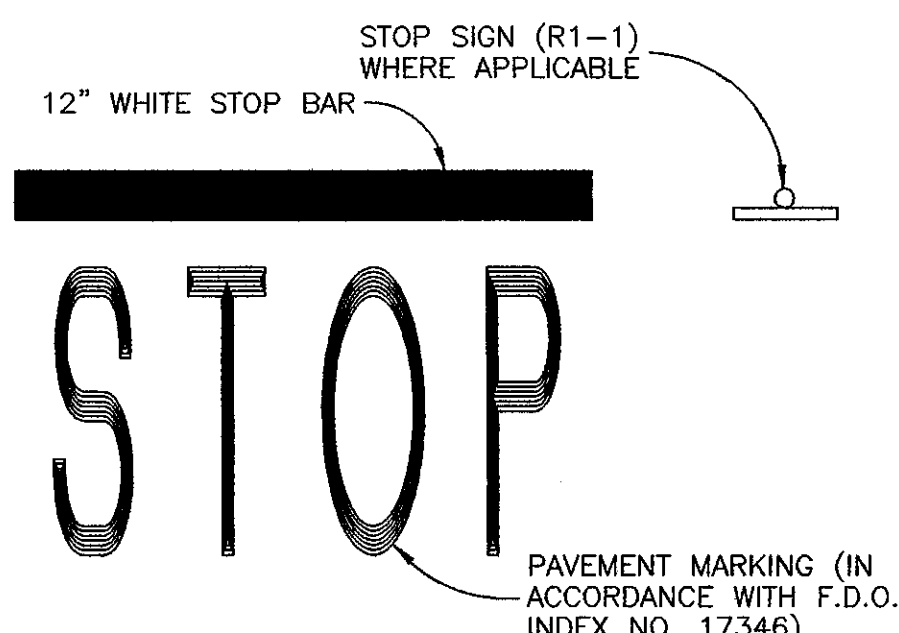
SIGNAGE DETAILS

N.T.S.



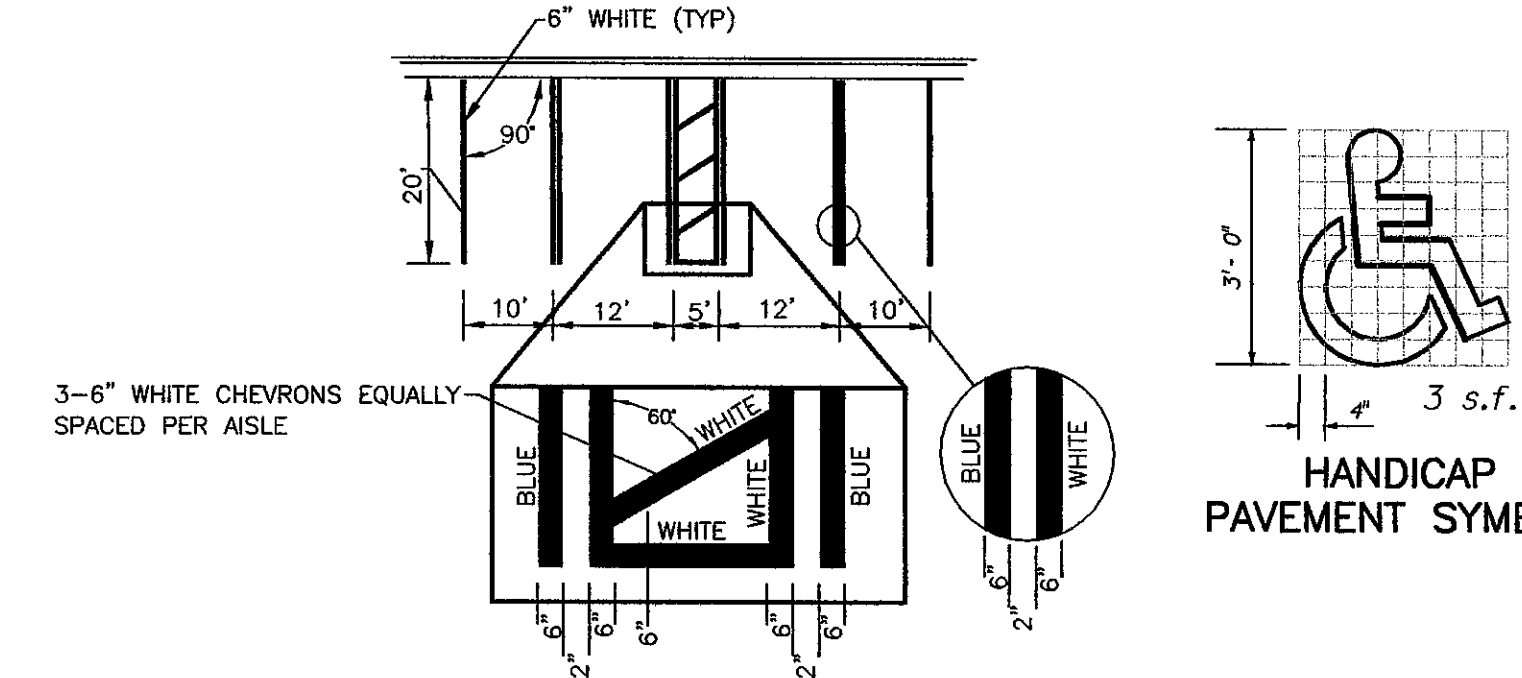
TRAFFIC DIRECTIONAL SIGN (FREESTANDING)

N.T.S.



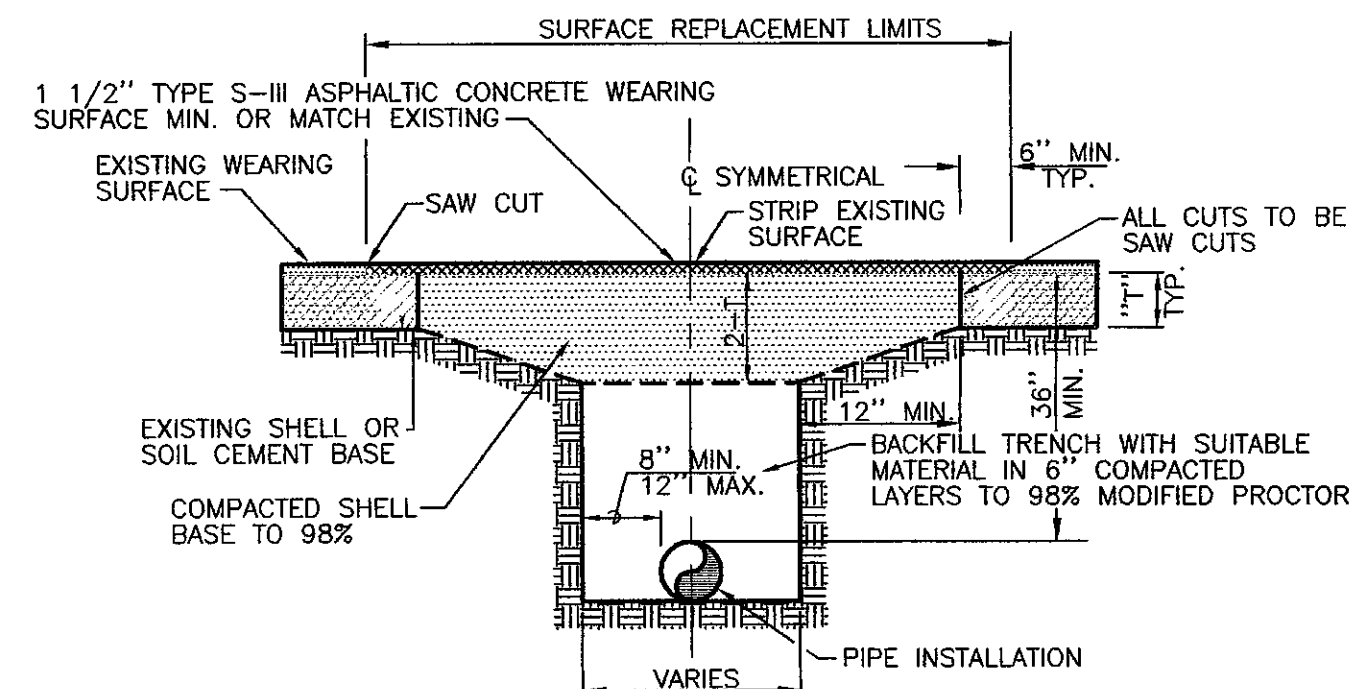
STOP BAR DETAIL

N.T.S.



TYPICAL HANDICAP PARKING/STRIPING DETAIL

N.T.S.

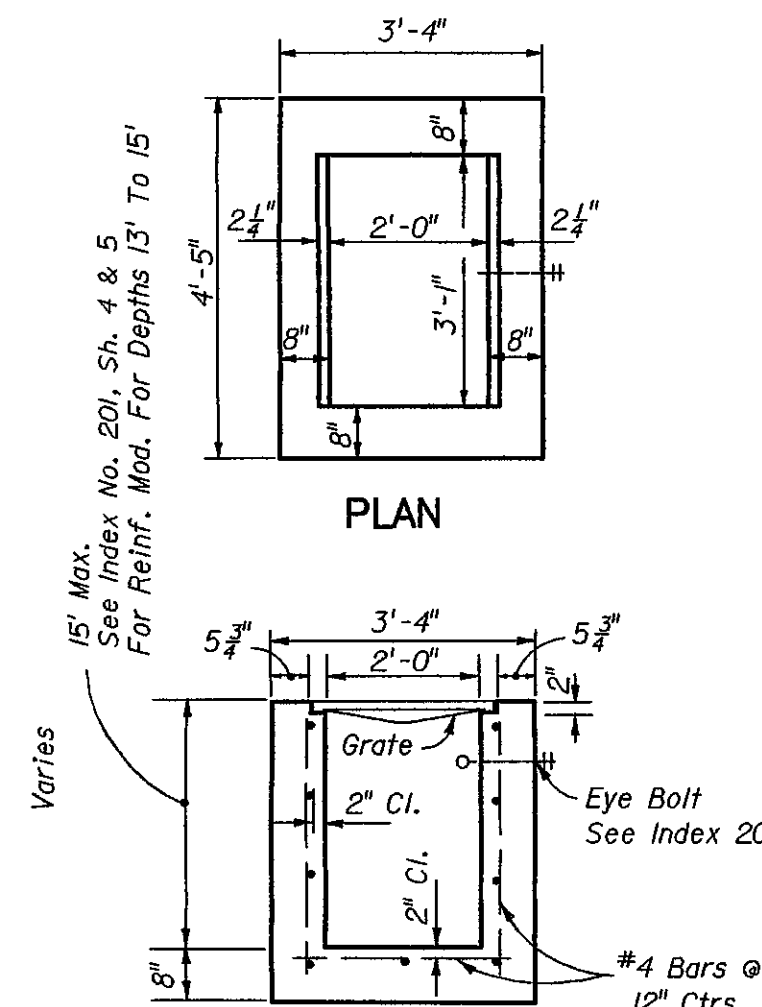


NOTE:

TEMPORARY PATCH SHALL BE MAINTAINED BY CONTRACTOR FOR A MAXIMUM OF 20 DAYS. THEN TO BE CONVERTED TO A PERMANENT PATCH IF MATERIAL IS SUITABLE AND APPROVED BY THE TOWN ENGINEER. BASE AND WEARING SURFACE TO BE APPROVED AND INSPECTED BY THE TOWN ENGINEER. SHELL SURFACED ROADS SHALL BE COMPACTED AS SPECIFIED WITH SHELL BASE AND SURFACED TO MATCH EXISTING GRADES.

PAVEMENT RESTORATION DETAIL

N.T.S.

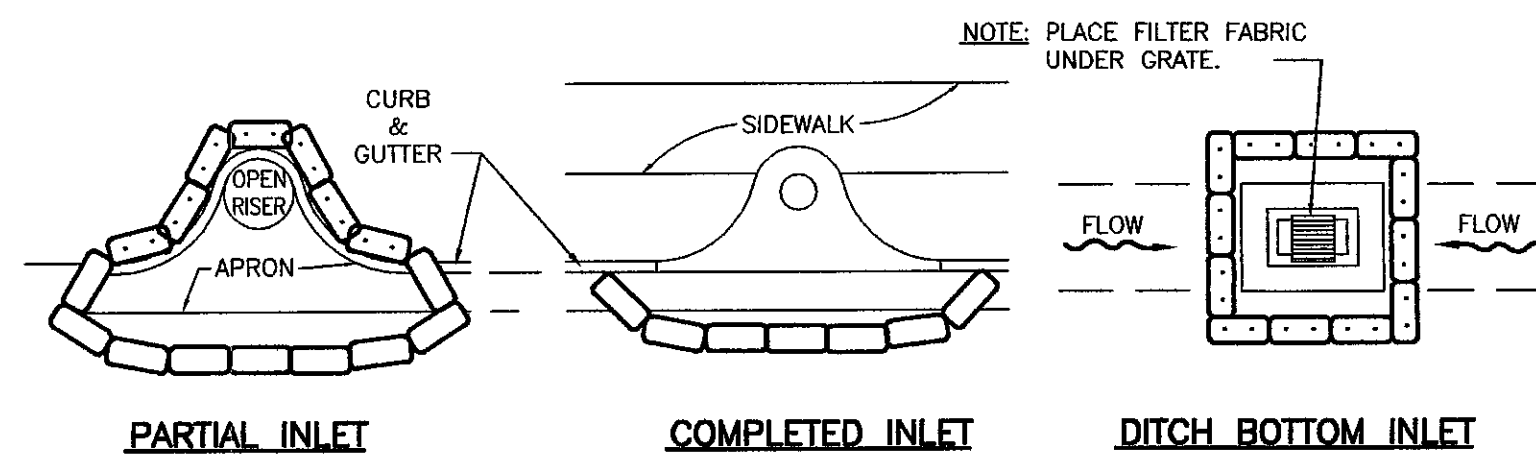


TYPE "C" INLET DETAIL

N.T.S.

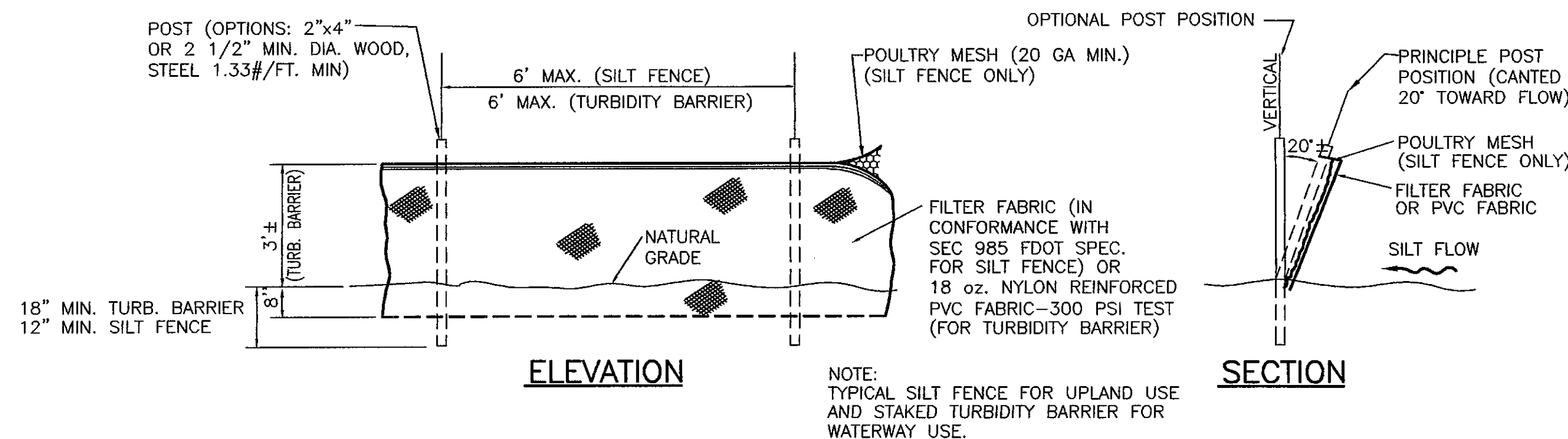
NOTES:

1. TRENCH WIDTH SHALL BE APPROX. EQUAL TO THE PIPE DIA. + 2 FEET OR AS PER AWWA AND THE MANUFACTURERS RECOMMENDATIONS.
2. PROVIDE SHEETING AND SHORING AS NECESSARY FOR SAFETY.
3. BACKFILL MATERIALS SHALL BE APPROVED BY THE ENGINEER WHERE THE PIPE IS UNDERCUT.
4. WATER, SEWER, AND REUSE MAINS TO BE INSTALLED WITH A MINIMUM 36 INCHES OF COVER.
5. REFER TO LAND DEVELOPMENT REGULATIONS FOR DENSITY REQUIREMENTS.



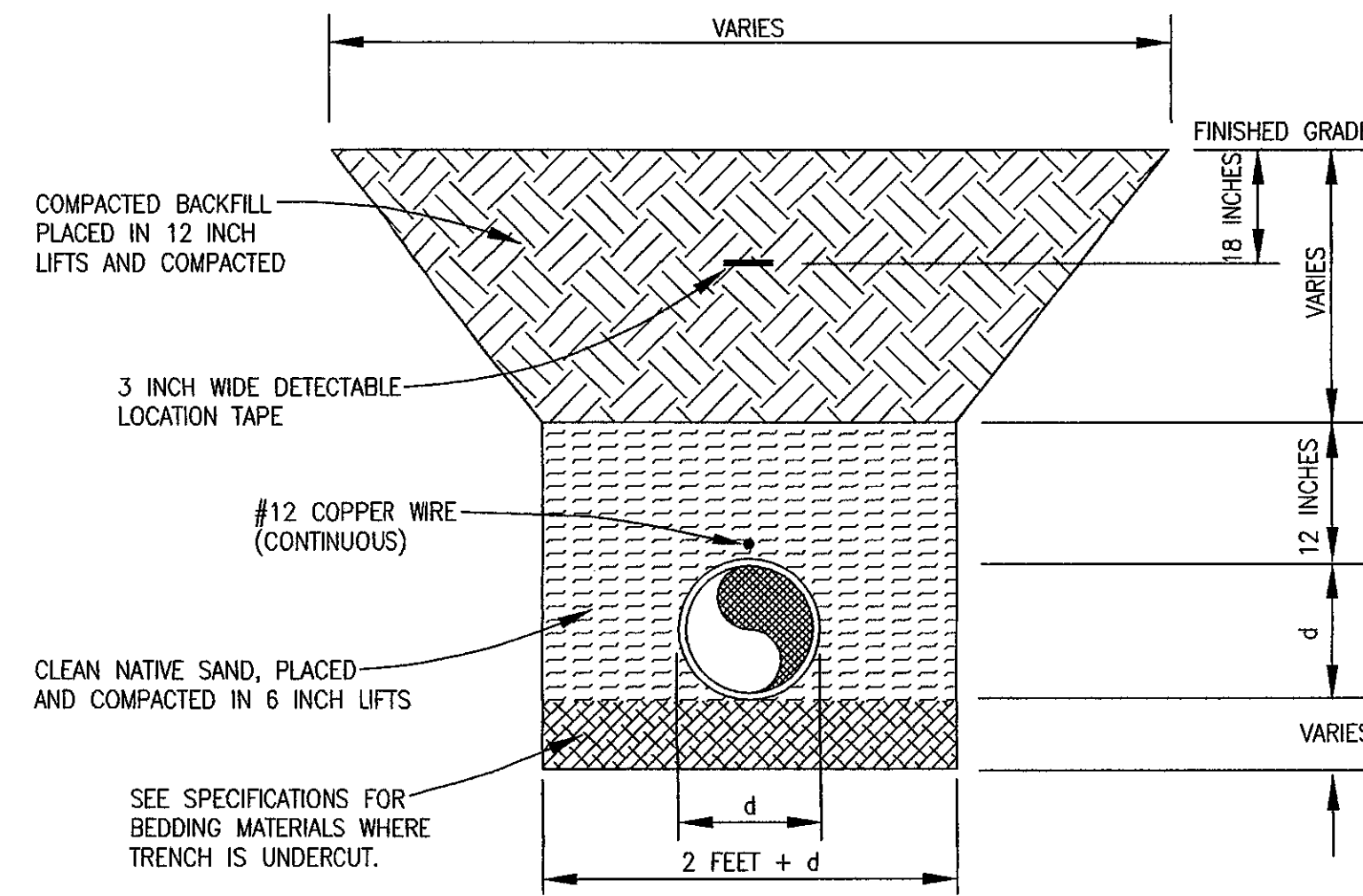
PROTECTION AROUND INLETS OR SIMILAR STRUCTURES

N.T.S.



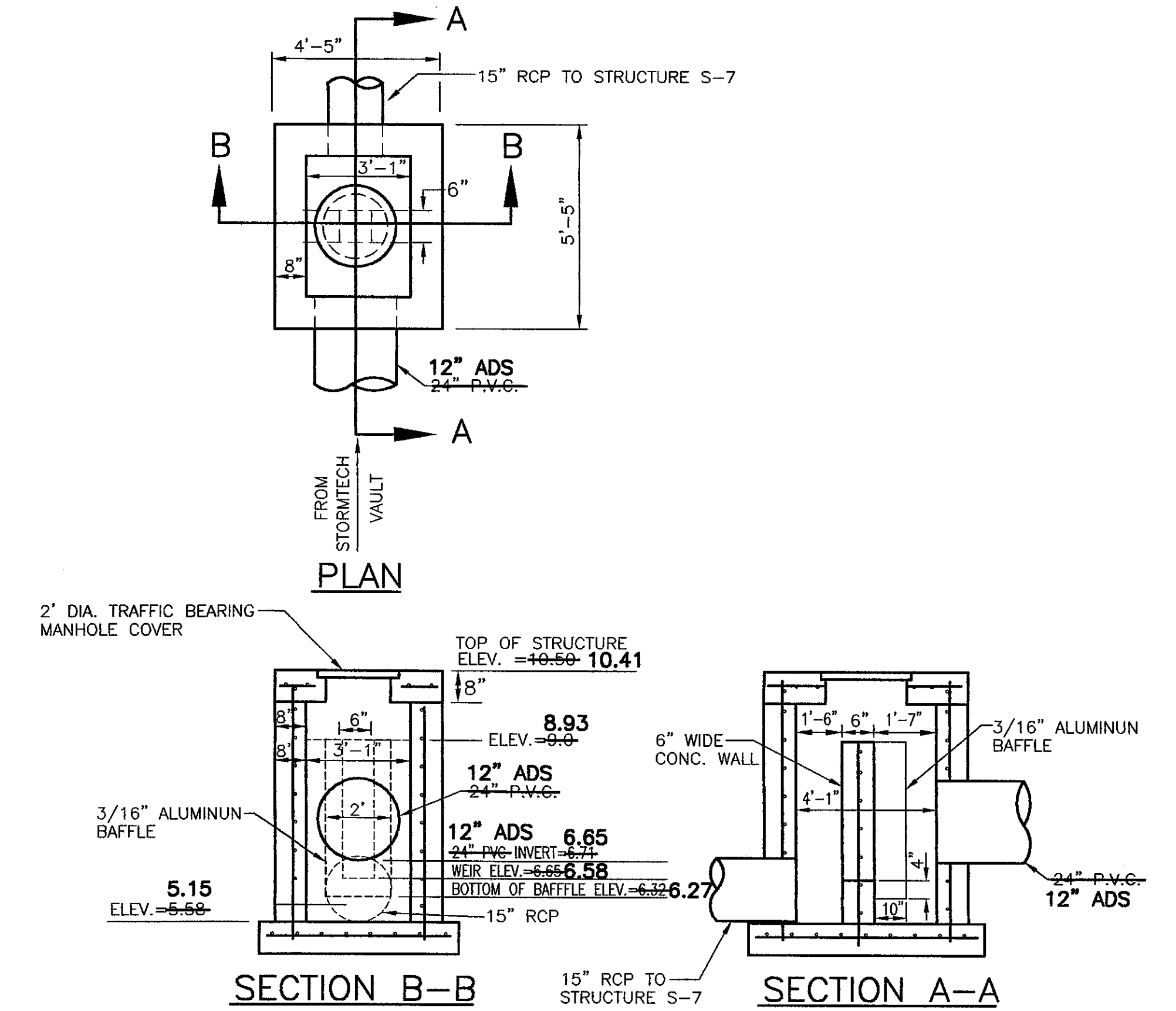
TYPICAL SILT FENCE AND STAKED TURBIDITY BARRIER

N.T.S.



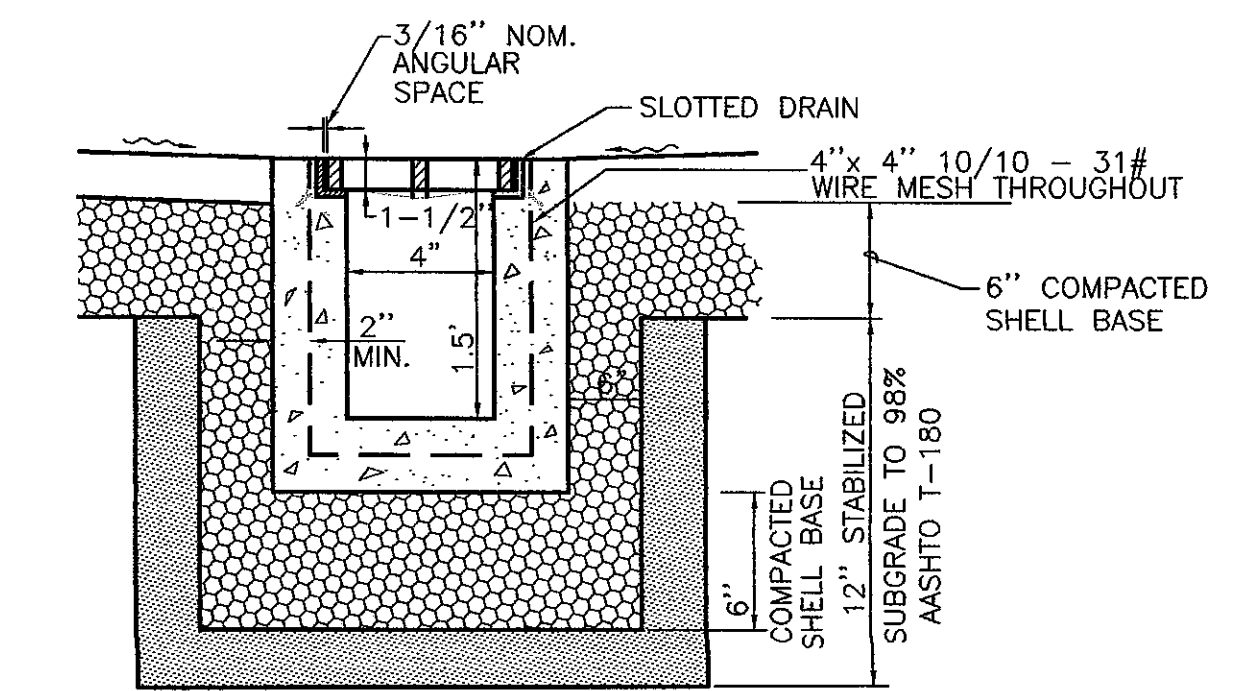
TRENCH DETAIL

N.T.S.



OUTFALL STRUCTURE S-8 MODIFIED TYPE "D" INLET DETAIL

N.T.S.



TRENCH DRAIN SECTION

N.T.S.

NO.	BY	DATE	DESCRIPTION	NO.	BY	DATE	DESCRIPTION
1	PSN	2-13-03	REVISED PER TOWN OF LONGBOAT KEY PRELIMINARY REVIEW COMMENTS	6			
2	PSN	2-20-03	REVISED PER TOWN OF LONGBOAT KEY PRELIMINARY REVIEW COMMENTS	7			
3	PSN	5-16-03	REVISED PER FINAL CONSTRUCTION PLAN REVIEW	8			
4	PSN	10-6-04	REVISED CLUBHOUSE FOOTPRINT AND SIDEWALKS	9			
5	GJR	5-17-07	ADDITION OF RECORD INFORMATION	10			

George F. Young, Inc.
 ARCHITECTURE • ENGINEERING • ENVIRONMENTAL • LANDSCAPE • PLANNING • SURVEYING • UTILITIES
 BRADENTON • GAINESVILLE • NORTH PALM BEACH • ST. PETERSBURG • SARASOTA • TAMPA
 ENGINEERING STATE BUSINESS NO. EB-0000021 • SURVEYING STATE BUSINESS NO. LB-21
 78 SARASOTA CENTER BOULEVARD SARASOTA, FLORIDA 34240
 SINCE 1919 PHONE (941) 371-5362 • FAX (941) 378-3215 • E-MAIL info@georgeyoung.com

Mark A. Adler
 MARK A. ADLER, P.E. REG. 37799
 AUG 01 2007
 DATE

TASK INITIALS DATE
 DESIGN S.C.M. 1-13-03
 DRAWN P.S.N. 1-24-03
 CHECKED P.C.P. 5-16-03
 QUALITY CHK. H.F.F. 5-16-03
 SCALE 1"=30'

PREPARED FOR:
LA FIRENZA, LLC
 9853 N. TAMAMI TRAIL, SUITE 218
 NAPLES, FLORIDA 34108

LA FIRENZA
 PAVING, GRADING AND DRAINAGE DETAILS
 JOB NO. 0271007000
 SHEET NO. R11

I:\PROJECTS\SIENING\2002\0271-0070-00\dwg\RECORD\0271007000-R11-PGDDET.dwg, Model: 8/1/2007 2:18:47 PM, ricar