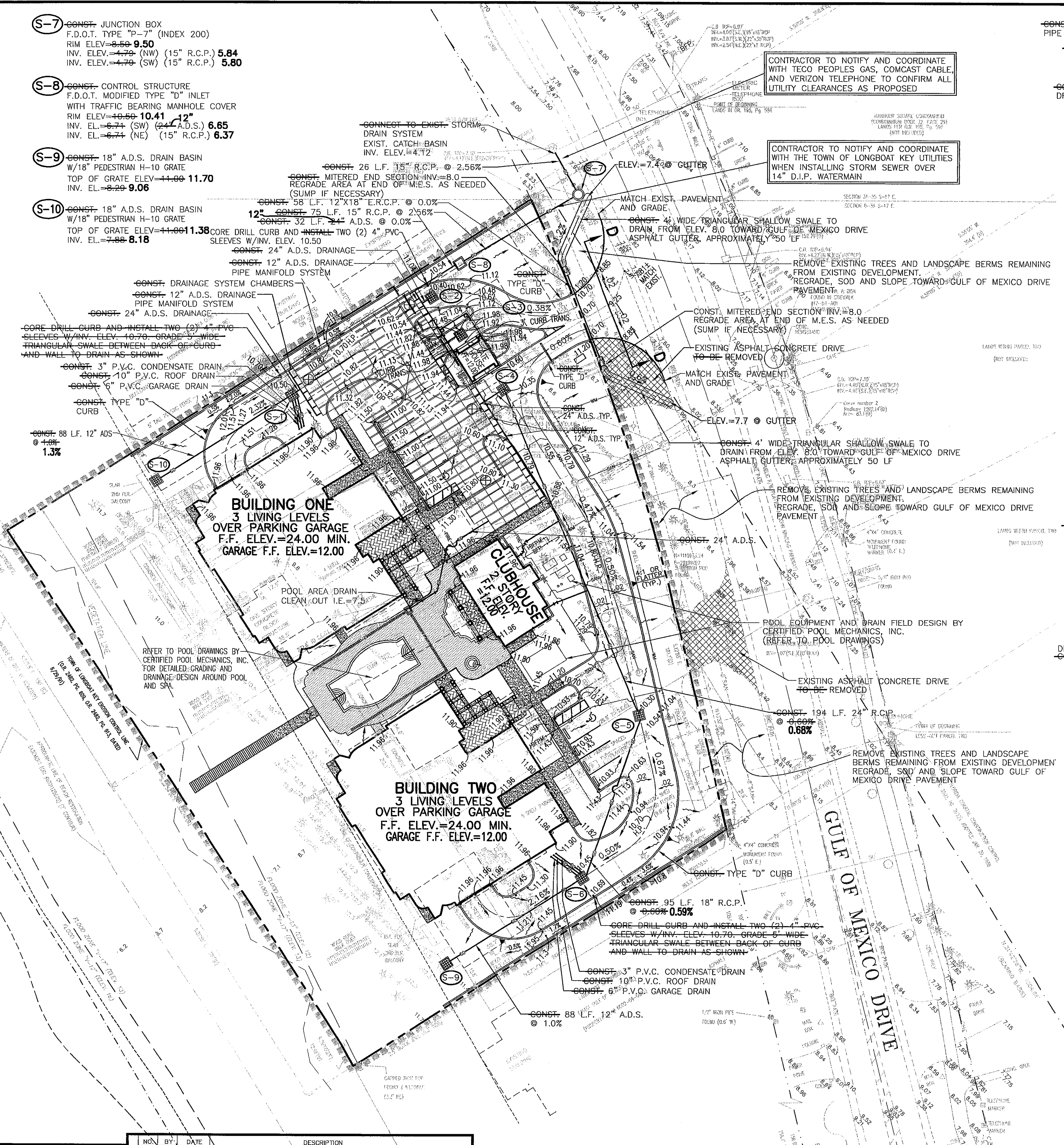


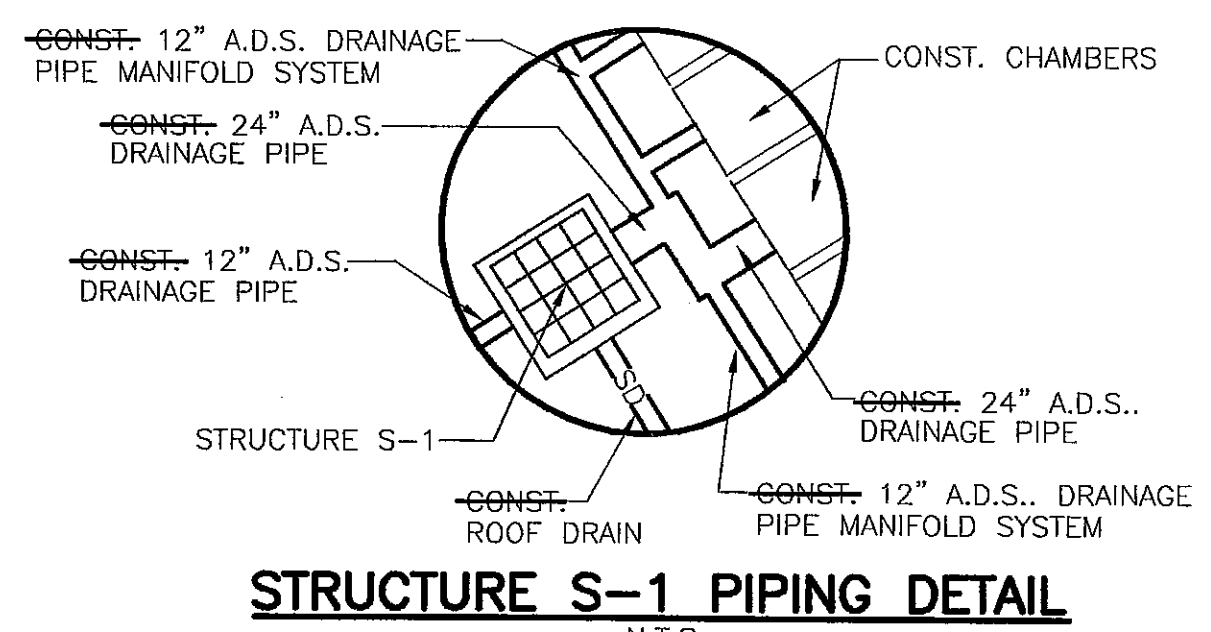
- S-1 CONST. GRATE INLET  
F.D.O.T. TYPE "C" INLET (INDEX 232)  
WITH HEAVY DUTY STEEL GRATE  
TOP OF GRATE ELEV.=10.56 10.60  
INV. EL.=6.74 (NE) (24" A.D.S.) 7.15  
INV. EL.=7.00 ROOF DRAIN 7.07  
INV. EL.=7.00 (SW) (12" A.D.S.) 7.08  
BOTTOM ELEV.=5.58
- S-2 CONST. GRATE INLET  
F.D.O.T. TYPE "C" INLET (INDEX 232)  
WITH HEAVY DUTY STEEL GRATE  
TOP OF GRATE ELEV.=10.40 11.22  
INV. EL.=6.74 (SW) (24" A.D.S.) 7.50  
BOTTOM ELEV.=5.58
- S-3 CONST. GRATE INLET  
F.D.O.T. TYPE "C" INLET (INDEX 232)  
WITH HEAVY DUTY STEEL GRATE  
TOP OF GRATE ELEV.=11.82 11.19  
INV. EL.=6.74 (SW) (24" A.D.S.) 6.57  
BOTTOM ELEV.=5.58
- S-4 CONST. GRATE INLET  
F.D.O.T. TYPE "C" INLET (INDEX 232)  
WITH HEAVY DUTY STEEL GRATE  
TOP OF GRATE ELEV.=10.35 11.01  
INV. EL.=6.50 (SE) (24" R.C.P.) 6.17  
INV. EL.=6.74 (SW) (24" A.D.S.) 7.32
- S-5 CONST. GRATE INLET  
F.D.O.T. TYPE "C" INLET (INDEX 232)  
WITH HEAVY DUTY STEEL GRATE  
TOP OF GRATE ELEV.=10.30 11.02  
INV. EL.=6.74 (NW) (24" R.C.P.) 7.48  
INV. EL.=6.84 (SW) (18" R.C.P.) 7.60
- S-6 CONST. GRATE INLET  
F.D.O.T. TYPE "C" INLET (INDEX 232)  
WITH HEAVY DUTY STEEL GRATE  
TOP OF GRATE ELEV.=10.45 11.18  
INV. EL.=7.14 (NE) (18" R.C.P.) 8.16  
INV. EL.=7.44 ROOF DRAIN 7.41  
INV. EL.=7.44 (SW) (12" A.D.S.) 8.22

- S-7 CONST. JUNCTION BOX  
F.D.O.T. TYPE "P-7" (INDEX 200)  
RIM ELEV.=8.50 9.50  
INV. ELEV.=4.79 (NW) (15" R.C.P.) 5.84  
INV. ELEV.=4.79 (SW) (15" R.C.P.) 5.80
- S-8 CONST. CONTROL STRUCTURE  
F.D.O.T. MODIFIED TYPE "D" INLET  
WITH TRAFFIC BEARING MANHOLE COVER  
RIM ELEV.=10.50 10.41 12"  
INV. EL.=6.74 (SW) (24" A.D.S.) 6.65  
INV. EL.=6.74 (NE) (15" R.C.P.) 6.37
- S-9 CONST. 18" A.D.S. DRAIN BASIN  
W/18" PEDESTRIAN H-10 GRATE  
TOP OF GRATE ELEV.=11.00 11.70  
INV. EL.=8.20 9.06
- S-10 CONST. 18" A.D.S. DRAIN BASIN  
W/18" PEDESTRIAN H-10 GRATE  
TOP OF GRATE ELEV.=11.00 11.38  
INV. EL.=7.80 8.18

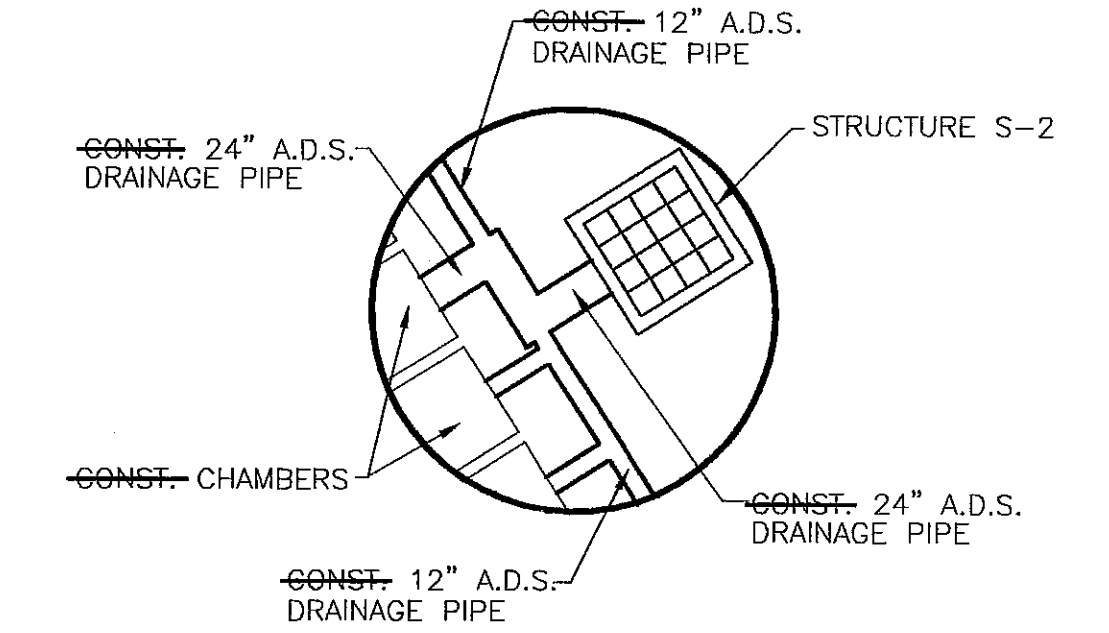


CONTRACTOR TO NOTIFY AND COORDINATE WITH TECO, PEOPLES GAS, COMCAST CABLE, AND VERIZON TELEPHONE TO CONFIRM ALL UTILITY CLEARANCES AS PROPOSED

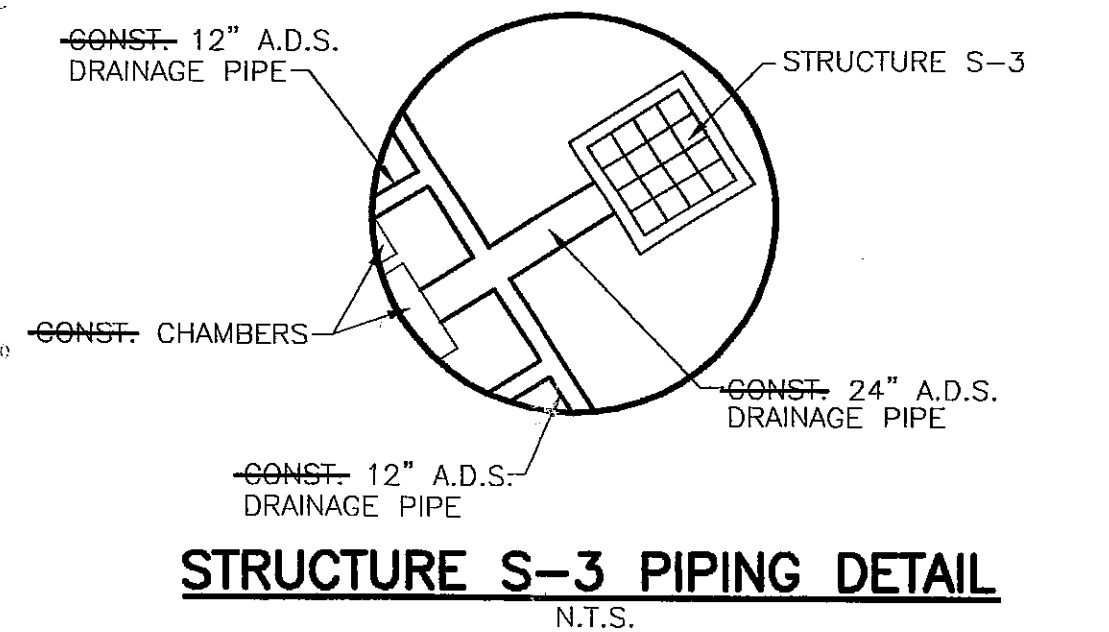
CONTRACTOR TO NOTIFY AND COORDINATE WITH THE TOWN OF LONGBOAT KEY UTILITIES WHEN INSTALLING STORM SEWER OVER 14" D.I.P. WATERMAIN



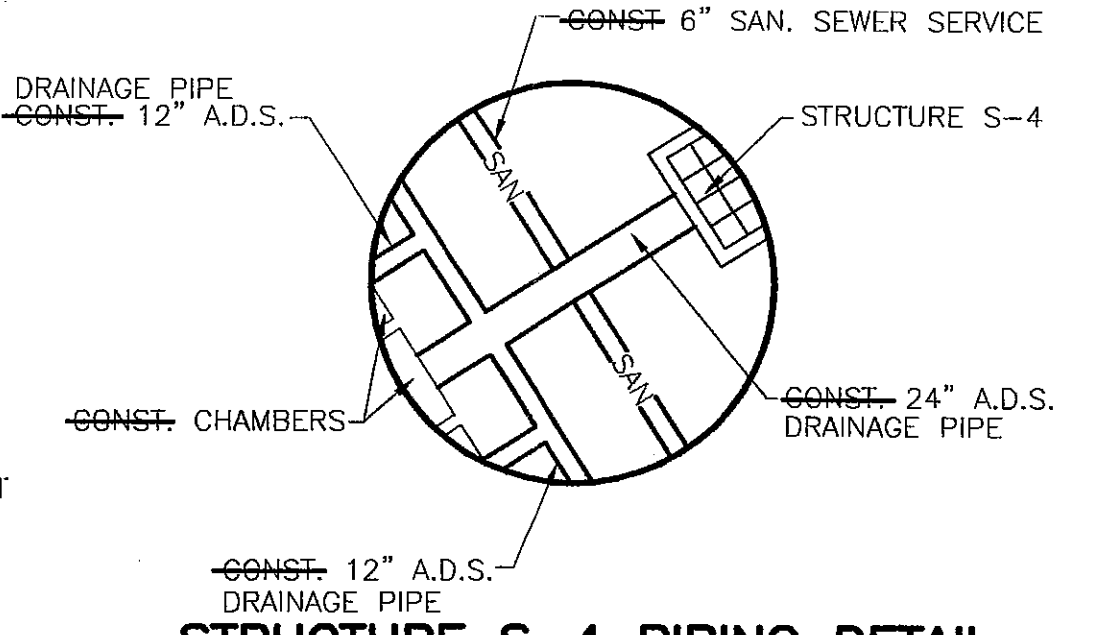
STRUCTURE S-1 PIPING DETAIL  
N.T.S.



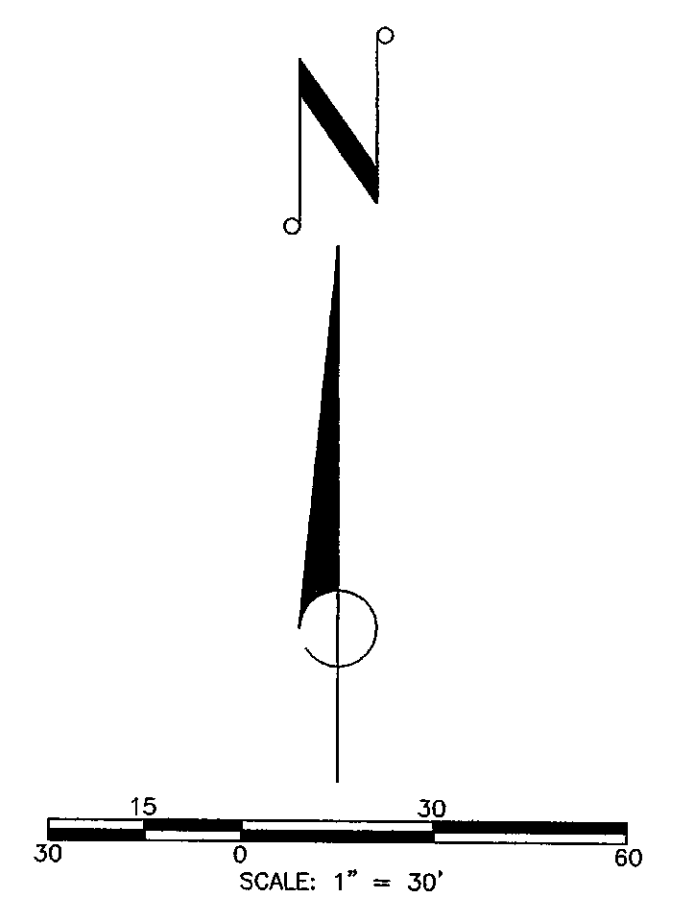
STRUCTURE S-2 PIPING DETAIL  
N.T.S.



STRUCTURE S-3 PIPING DETAIL  
N.T.S.



STRUCTURE S-4 PIPING DETAIL  
N.T.S.



- LEGEND**
- EXIST. CONTOUR
  - EXIST. SPOT ELEVATION
  - EXIST. SANITARY SEWER/MANHOLE
  - EXIST. CABLE TELEVISION
  - EXIST. WATER MAIN
  - EXIST. FORCE MAIN
  - EXIST. GAS MAIN
  - EXIST. FENCE
  - EXIST. BUILDING FOOTPRINT
  - EXIST. POND TOP OF BANK
  - EXIST. PAVEMENT
  - EXIST. POWER POLE
  - EXIST. LIGHT POST
  - EXIST. OVERHEAD ELECTRIC
  - EXIST. STORM SEWER
  - EXIST. STORM INLET
  - EXIST. SIGN
  - WM - PROP. WATER SYSTEM
  - BFP - PROP. BACKFLOW PREVENTER
  - WM - PROP. WATER METER
  - FIRE - PROP. FIRE SYSTEM
  - SAN - PROP. SANITARY SEWER
  - SM - PROP. SANITARY MANHOLE
  - SAN - PROP. SANITARY CLEANOUT
  - SD - PROP. STORM DRAINAGE
  - CB - PROP. CATCH BASIN
  - ECB - PROP. EROSION CONTROL BARRIER
  - --- PROPERTY LINE
  - ♿ - PROP. HANDICAP PARKING SPACES
  - ⊕ - PROP. INSPECTION PORT LOCATION
  - --- PROP. POOL DECK
  - --- PROP. CONCRETE SURFACE
- SEE BOUNDARY SURVEY FOR SPECIFIC DELINEATION OF EXISTING FEATURES

**NOTES:**  
RECORD INFORMATION PROVIDED BY SPECTRUM UNDERGROUND, INC.

- NOTES:**
- SILT BARRIERS, HAY BALES OR SIMILAR EFFECTIVE EROSION CONTROL BARRIERS WILL BE REQUIRED IN ANY AREA WHERE EROSION OR SILTATION MAY CAUSE DAMAGE TO TREES.
  - SILT FENCE BARRIER TO BE INSTALLED ALONG PERIMETER OF SITE PER THIS PLAN PRIOR TO ANY DEMOLITION OR CONSTRUCTION ON THIS SITE.
  - ALL STORMWATER RUNOFF FROM DEVELOPMENT SITE SHALL MEET APPLICABLE SOUTHWEST FLORIDA WATER MANAGEMENT DISTRICT (SWFMD) AND/OR FLORIDA DEPARTMENT OF ENVIRONMENTAL PROTECTION (FDEP).
  - ALL ELEVATIONS AREA BASED ON NGVD.

NO.	BY	DATE	DESCRIPTION
1	PSN	2-13-03	REVISED PER TOWN OF LONGBOAT KEY PRELIMINARY REVIEW COMMENTS
2	PSN	2-20-03	REVISED PER TOWN OF LONGBOAT KEY PRELIMINARY REVIEW COMMENTS
3	PSN	3-7-03	REVISED PER TOWN OF LONGBOAT KEY PRELIMINARY REVIEW COMMENTS
4	PSN	3-14-03	REVISED PER TOWN OF LONGBOAT KEY PRELIMINARY REVIEW COMMENTS
5	PSN	4-8-03	REVISED PER TOWN OF LONGBOAT KEY PRELIMINARY REVIEW COMMENTS
6	PSN	5-16-03	REVISED PER FINAL CONSTRUCTION PLAN REVIEW
7	LDL	11-6-03	DRIVEWAY CONNECTION REVISION DATED NOVEMBER 5, 2003.
8	PSN	7-14-04	REVISED FINAL BLDG LOCATIONS WITHIN APPROVED ENVELOPE AND DIMENSIONS

NO.	BY	DATE	DESCRIPTION
9	PSN	10-8-04	REVISED CLUBHOUSE FOOTPRINT AND SIDEWALKS
10	PSN	9-13-05	REVISED STORM DRAINAGE FROM S-8 TO CONNECTION W/EXIST. INLET
11	DTS	11-9-05	REVISED GRADING AROUND GUARD HOUSE
12	PSN	5-11-06	REVISE NOTES FOR MES AT ENTRANCE DRIVE
13	PSN	5-16-06	ADD FIRE SERVICE TO GUARD HOUSE AND FLOOR DRAINS TO CLUB HOUSE REFER TO 8x11 EXHIBITS
14	PSN	7-17-06	ADDITIONAL DRAINAGE IMPROVEMENTS WITHIN GULF OF MEXICO DR. RIGHT-OF-WAY AND PROPERTY LINE GRADING ON NORTH AND SOUTH SIDES OF PROJECT
15	GJR	5-17-07	ADDITION OF RECORD INFORMATION

**George F. Young, Inc.**  
ARCHITECTURE • ENGINEERING • ENVIRONMENTAL • LANDSCAPE • PLANNING • SURVEYING • UTILITIES  
BRADENTON • GAINESVILLE • NORTH PALM BEACH • ST. PETERSBURG • SARASOTA • TAMPA  
ENGINEERING STATE BUSINESS NO. EB-0000021 • SURVEYING STATE BUSINESS NO. LB-21  
78 SARASOTA CENTER BOULEVARD SARASOTA, FLORIDA 34240  
Since 1919 PHONE (941) 371-6362 • FAX (941) 378-3215 • E-MAIL info@georgeyoung.com

Mark A. Miller, P.E.  
NO. 37799  
AUG 0 1 2007

TASK	INITIALS	DATE
DESIGN	S.C.M.	1-13-03
DRAWN	P.S.N.	1-24-03
CHECKED	P.C.P.	5-16-03
QUANTITY	H.F.F.	5-16-03

PREPARED FOR:  
**LA FIRENZA, LLC**  
9853 N. TAMAMI TRAIL, SUITE 218  
NAPLES, FLORIDA 34108

**RECORD DRAWINGS**

**LA FIRENZA**

PAVING, GRADING, DRAINAGE AND SOIL EROSION SEDIMENTATION PLAN

JOB NO. 0271007000  
SHEET NO. R7

I:\PROJECTS\10070-00\DWG\RECORD\0271007000-F07-PGD.dwg, C7, 8/17/2007 10:22:57 AM