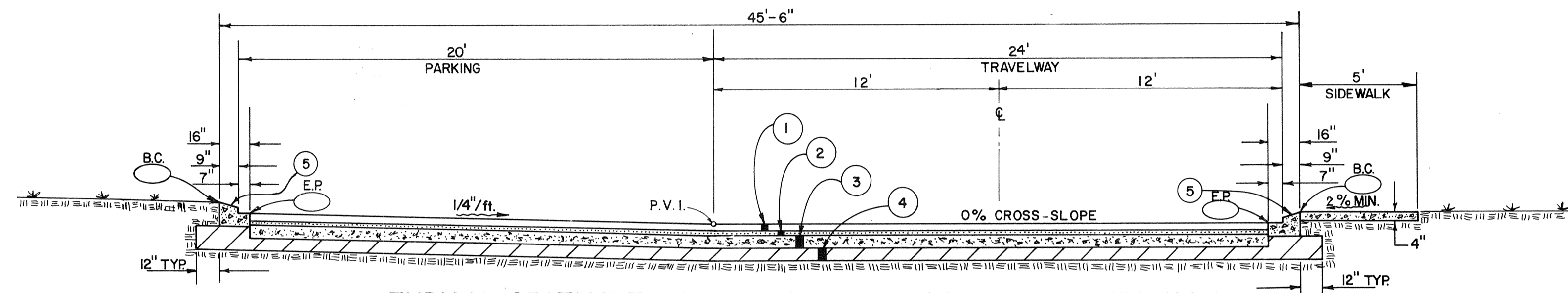
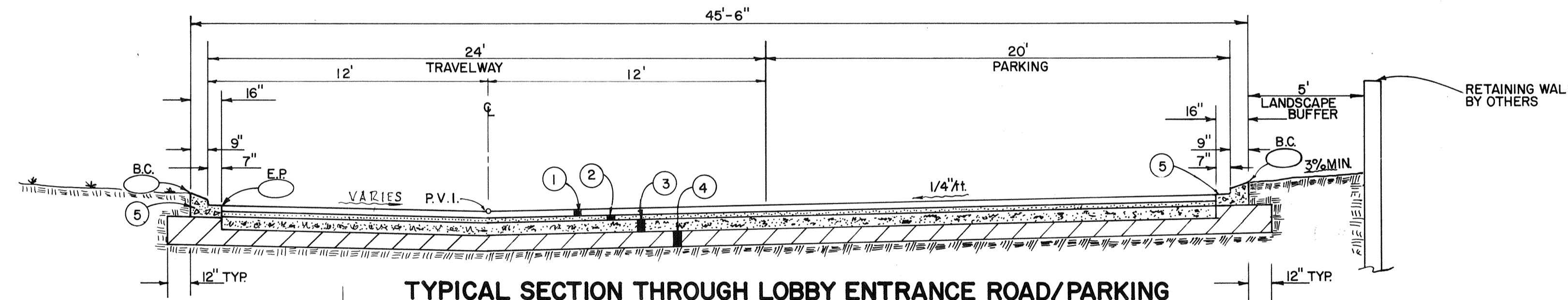


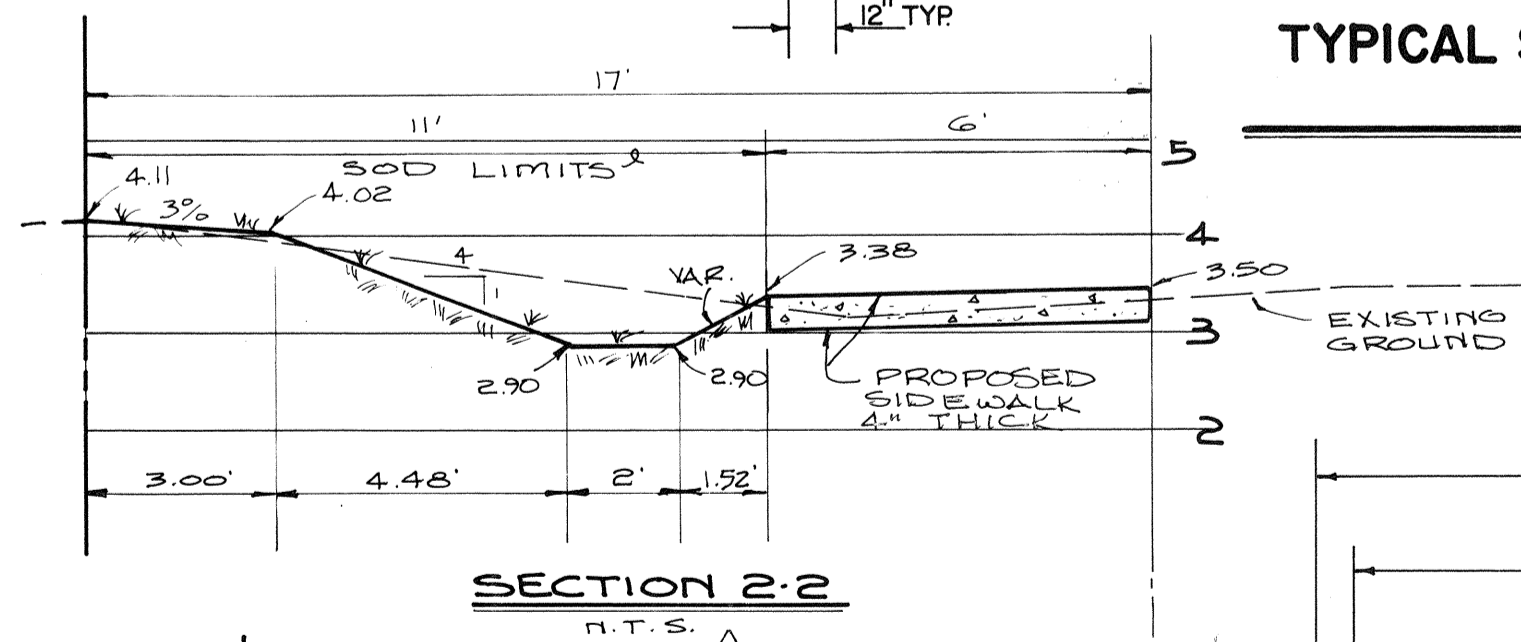
TYPICAL ROADWAY SECTION AT ENTRANCE
1" = 4"



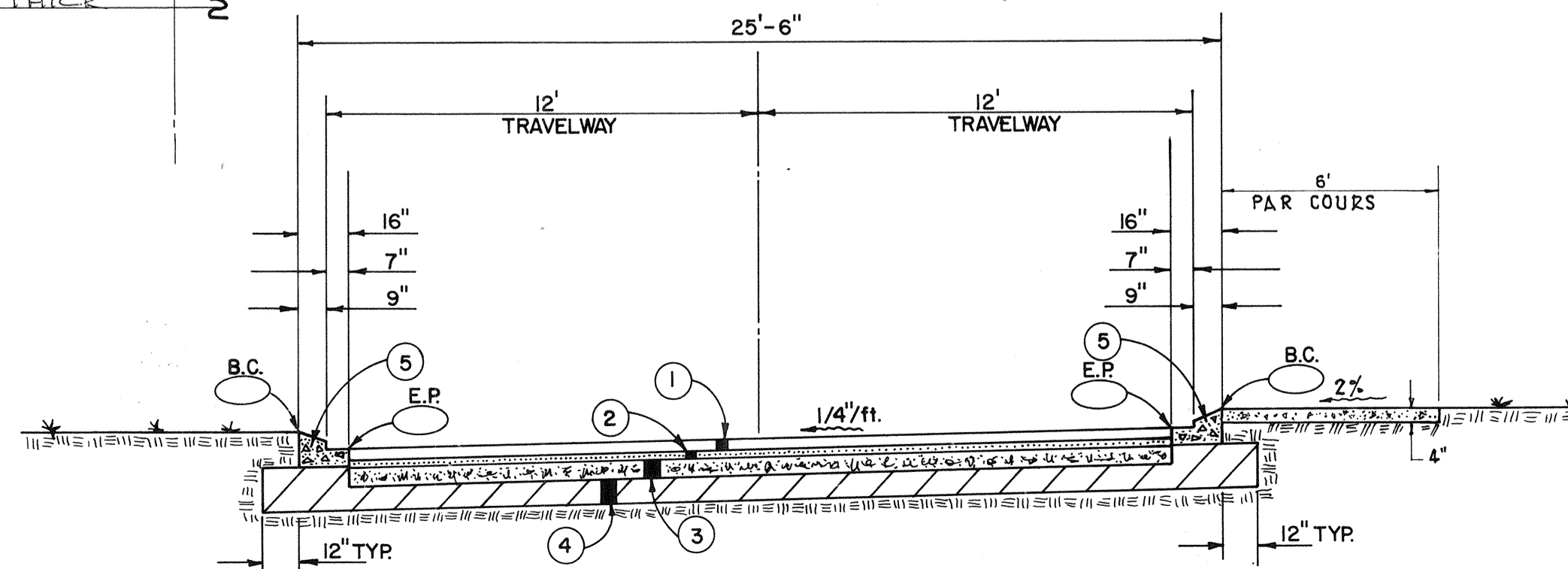
TYPICAL SECTION THROUGH BASEMENT ENTRANCE ROAD/PARKING SECTION "A-A"
1" = 4"



TYPICAL SECTION THROUGH LOBBY ENTRANCE ROAD/PARKING SECTION "B-B"
1" = 4"



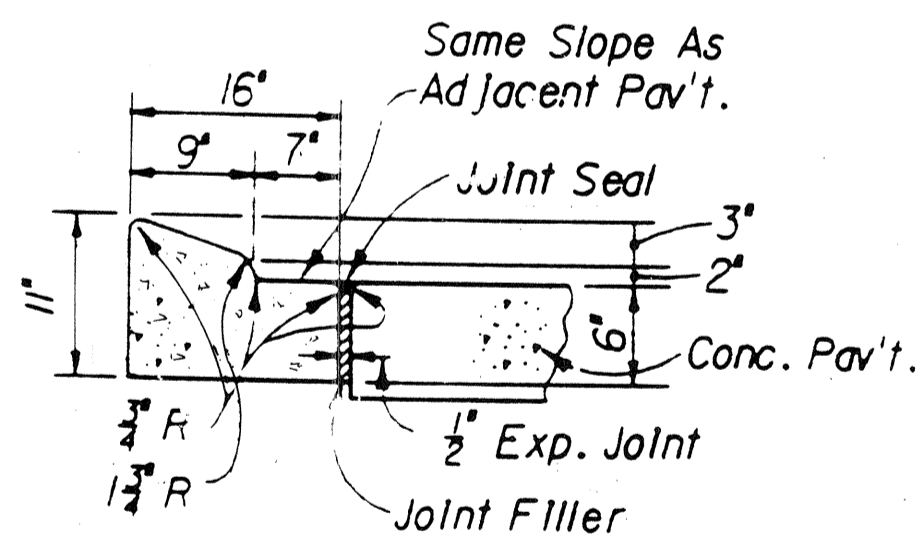
SECTION 2-2
N.T.S.



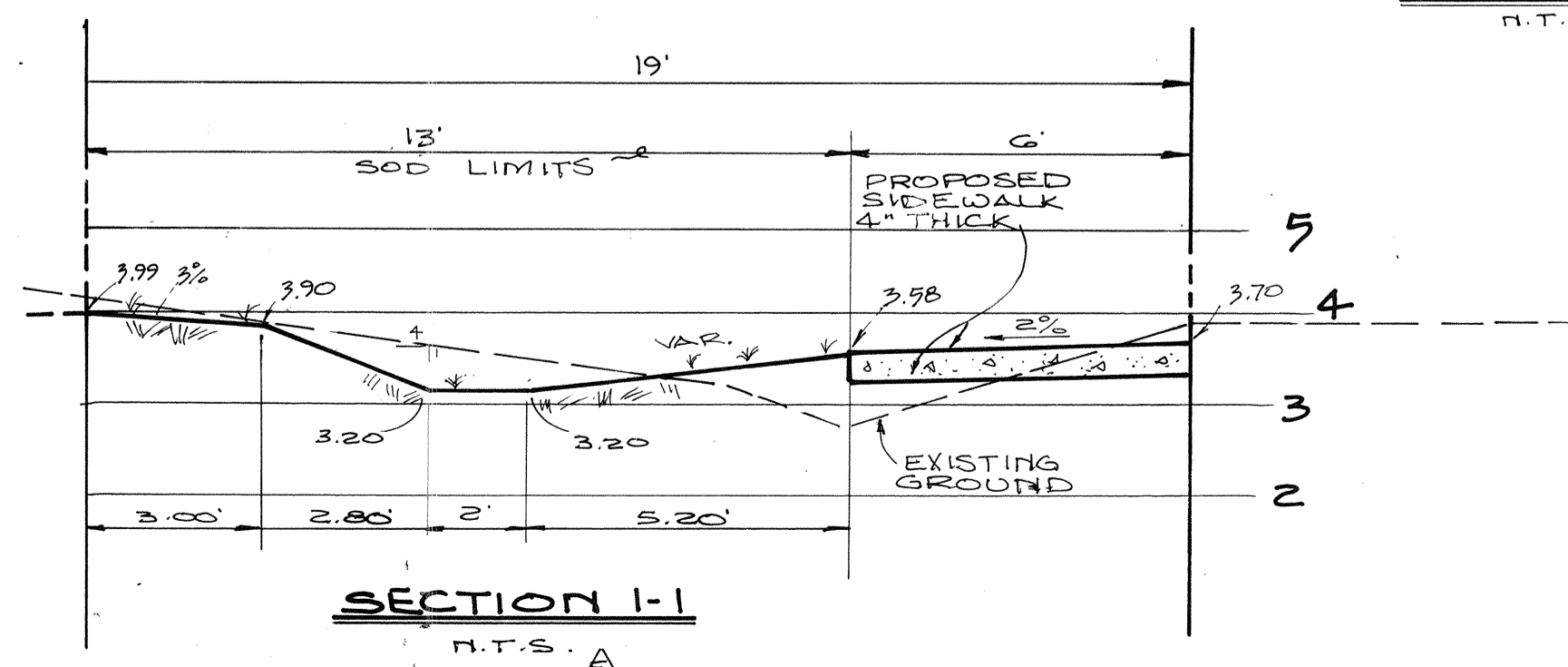
TYPICAL TRAVELWAY SECTION SECTION "C-C"
1" = 4"

NOTES

- (A) ALL PAVER JOINTS TO BE FILLED WITH SCREENING SAND AND THEN SWEEPED CLEAN.
- (B) ALL PAVEMENT CROSS-SLOPES TO BE 1/4"/ft. UNLESS OTHERWISE SHOWN ON PLANS.
- (C) CURB IS TO BE SLOPED IN DIRECTION OF PAVEMENT.
- (D) BACK OF CURB (B.C.) GRADE IS 0.42' HIGHER THAN EDGE OF PAVEMENT (E.P.) GRADE.



TYPE "A" CURB
N.T.S.



SECTION 1-1
N.T.S.

LEGEND

- 1 2 1/2" THICK, HEAVY DUTY SPECIAL PAVING BLOCK, 8,000 PSI. RATING REQUIRED. SHAPE, SIZE, MANUFACTURER AND STYLE AS APPROVED BY OWNER.
- 2 1 1/2" SAND SETTING BED.
- 3 6" MIN. THICK SOIL CEMENT BASE, USING 6" MIN. THICK PIT SHELL. MATERIAL SHALL BE COMPACTED TO 98% MAXIMUM DENSITY BY A.A.S.H.T.O. METHOD T-99 (STANDARD) APPROVED PLANT MIX MAY BE USED IN LIEU OF SITE MIX. ALTERNATE BASE MATERIAL AS AN ALTERNATE (TO BE DETERMINED BY THE OWNER) THE BASE MATERIAL MAY BE 6" THICK (MIN) SHELL, COMPACTED TO 98% MAXIMUM DENSITY BY A.A.S.H.T.O. METHOD T-180 (MODIFIED). MATERIAL SHALL HAVE A MINIMUM L.B.R. OF 100.
- 4 6" MIN. THICK COMPACTED SUBBASE TO 98% MAX. DENSITY BY A.A.S.H.T.O. METHOD T-180 (MODIFIED) FOR THE FULL 6" THICKNESS.
- 5 TYPE "A" CURB.

NOTE: FOR UNDERDRAIN PLAN & SECTIONS, & PROFILES SEE DRAWING 20.

DESIGNED BY	JMB	DATE:	7/90	CHECKED BY	R.B.K.	PROJECT NO.	2591	DRAWN BY	R.B.K.	SCALE:	1" = 4"
FOR: YALE PROPERTIES	L'AMBANCE										
TYPICAL PAVEMENT SECTIONS											
SMALLY, WELLFORD & NALVEN, Inc.											
CONSULTING ENGINEERS & SURVEYORS											
133 SOUTH McINTOSH RD. SARASOTA, FLA. 33552											
MILLARD L. YODER, P.E. FL. CERT. # 33769											
REVISION	3										