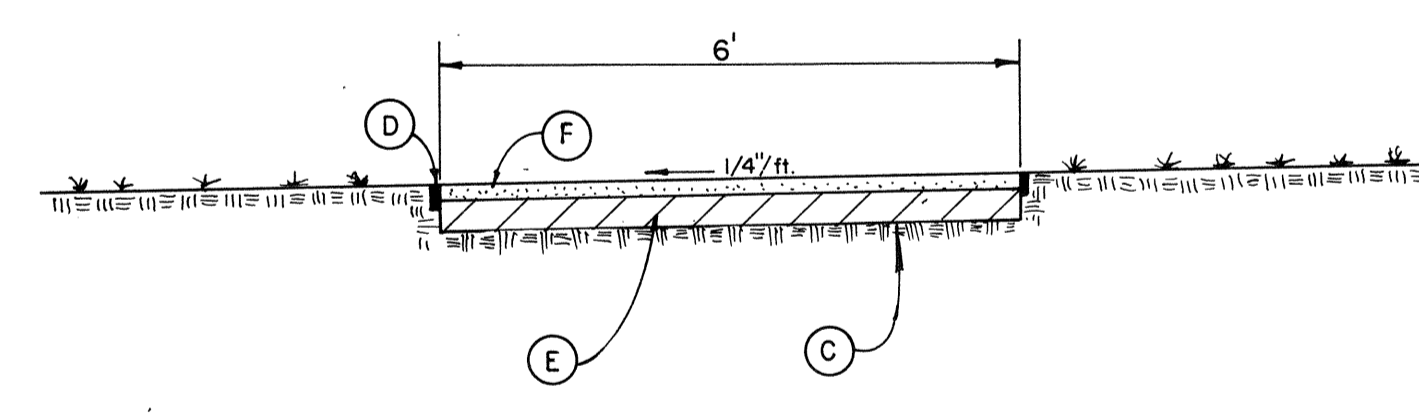
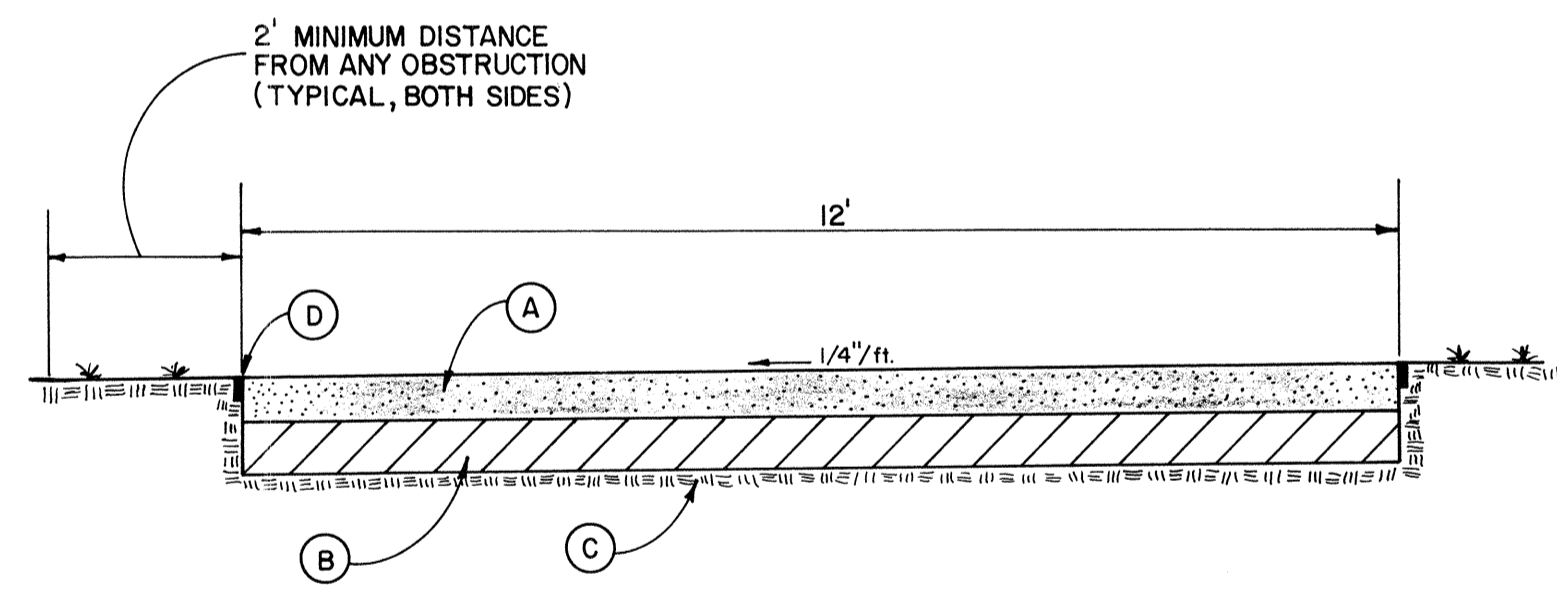


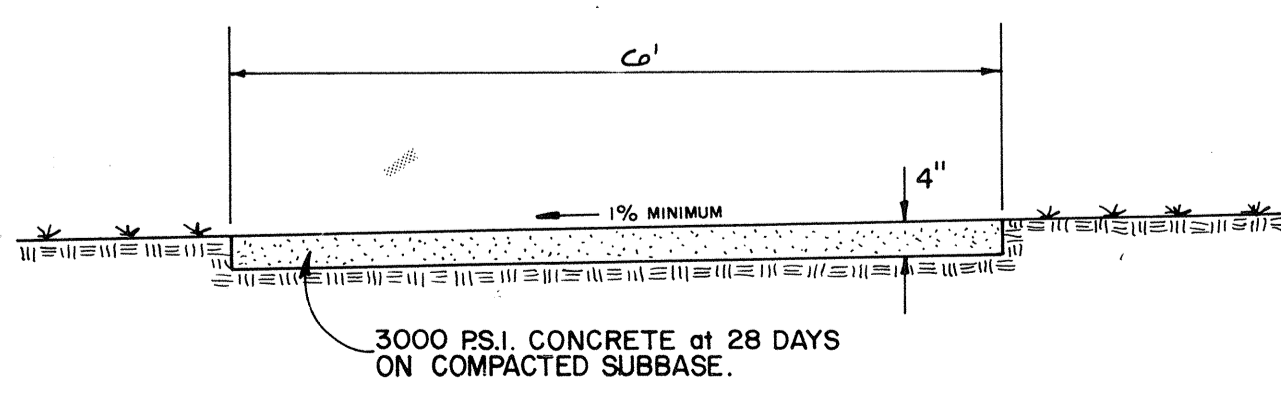
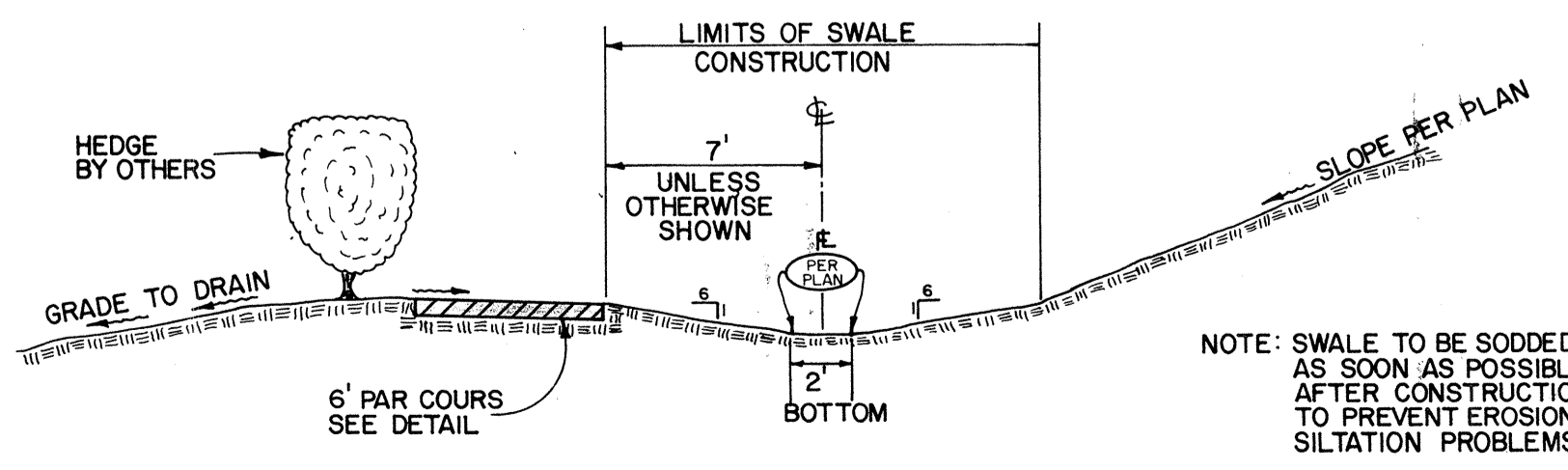
**CURB DETAIL AT ENTRANCE (EXISTING)**



- (A) 2" MINIMUM FINE WASHED CRUSHED SHELL MATERIAL. MATERIAL SHALL BE APPROVED BY THE OWNER AND ENGINEER PRIOR TO PLACEMENT.
- (B) 6" MINIMUM SHELL COMPACTED TO 98% MAXIMUM DENSITY BY A.A.S.H.T.O. METHOD T-180 (MODIFIED) MATERIAL SHALL HAVE A MINIMUM LBR OF 100.
- (C) COMPACTED SUBBASE
- (D) 1" x 4" PRESSURE TREATED EDGING MATERIAL ON BOTH SIDES, OR APPROVED EQUAL
- (E) 4" MINIMUM SHELL BASE COMPACTED TO 98% MAXIMUM DENSITY BY A.A.S.H.T.O. METHOD T-180 (MODIFIED) MATERIAL SHALL HAVE A MINIMUM LBR OF 100.
- (F) 2" MINIMUM FINE WASHED CRUSHED SHELL MATERIAL. MATERIAL SHALL BE APPROVED BY THE OWNER AND ENGINEER PRIOR TO PLACEMENT.

**TYPICAL EMERGENCY ACCESS/PAR COURS DETAIL**

**TYPICAL PAR COURS DETAIL**



**TYPICAL SWALE SECTION**

**TYPICAL BIKE PATH DETAIL**

**GENERAL CONSTRUCTION NOTES**

1. CLEARING AND GRUBBING-DEBRIS TO BE REMOVED FROM THE SITE. TREE REMOVAL PERMITS (IF REQUIRED) ARE THE RESPONSIBILITY OF THE CONTRACTOR. THE CONTRACTOR WILL BE RESPONSIBLE TO CONSTRUCT AND MAINTAIN TREE PROTECTION BARRICADES AND ABIDE BY THE TOWN OF LONGBOAT KEY'S ORDINANCES RELATED TO THESE PERMITS.
2. WHERE EXCAVATION IS IN CLOSE PROXIMITY OF EXISTING TREES, THE CONTRACTOR SHALL USE EXTREME CARE IN NOT DAMAGING THE ROOT SYSTEM. NO EQUIPMENT, SUPPLIES OR VEHICLES SHALL BE STORED OR PARKED WITHIN THE DRIP LINE OF TREES TO REMAIN AND BE PRESERVED. IT WILL BE THE RESPONSIBILITY OF THE GENERAL CONTRACTOR TO INFORM ALL OF HIS EMPLOYEES AND SUBCONTRACTORS OF THIS REQUIREMENT AND TO ENFORCE IT.
3. ALL PROPOSED GROUND ELEVATIONS ARE FINISH SOD ELEVATION. FINISH EARTHWORK GRADING WILL BE 0.2 FEET BELOW ELEVATIONS SHOWN TO ALLOW FOR SOD THICKNESS.
4. SODDING INCLUDES MAINTAINING SLOPES AND SOD UNTIL COMPLETION AND ACCEPTANCE OF TOTAL PROJECT OR GROWTH IS ESTABLISHED, WHICHEVER COMES LAST. ALL EROSION SILTATION AND MAINTAINING GRADES IS THE RESPONSIBILITY OF THE CONTRACTOR UNTIL THEN.
5. LAY SOD AROUND ALL INLETS, MITERED ENDWALLS, AND AS DIRECTED BY THE ENGINEER.
6. NOTIFY CANDY, STORER CABLE, TOWN OF LONGBOAT KEY PUBLIC WORKS DEPT., FPAL, AND GTE PRIOR TO CONSTRUCTION AND CONNECTION TO EXISTING UTILITIES. IT IS THE CONTRACTOR'S RESPONSIBILITY TO PROTECT EXISTING UTILITIES FROM DAMAGE.
7. THERE SHALL BE NO CHANGE OR DEVIATION FROM THESE PLANS UNLESS PRIOR APPROVAL BY THE ENGINEER.
8. ALL UTILITY LINES, STORM DRAIN PIPES, AND ACCESSORIES SUCH AS BUT NOT LIMITED TO, MANHOLES, CLEANOUTS, SEWER AND WATER SERVICES, VALVES, FIRE HYDRANTS AND INLETS WILL BE CONSTRUCTED TO THE ALIGNMENT AND LOCATION SHOWN ON THE PLANS.
9. CLEARING, GRUBBING, STRIPPING, AND COMPACTION OF ROADWAYS WILL BE INSPECTED BY THE ENGINEER PRIOR TO FILLING.
10. FILL AND COMPACTION REQUIREMENTS UNDER BUILDINGS WILL BE AS DIRECTED BY THE OWNER AND HIS FOUNDATION ENGINEER.
11. DURING CONSTRUCTION, ALL EFFORTS FOR SILTATION/EROSION CONTROL SHALL BE TAKEN, INCLUDING BUT NOT LIMITED TO THE USE OF TURBIDITY SCREENS, HAY BALES, AND SOD PLACEMENT AT THE EARLIEST POSSIBLE TIME AFTER EXCAVATION/GRADING AND AS DIRECTED BY THE ENGINEER.

PRINTED  
NOV 11 1993  
SMALLY, WELLFORD & NALVEN, INC.

DESIGNED BY	J.M.B.	DATE:	7/90
CHECKED BY	R.B.K.	PROJECT NO.	2591
SCALE:	AS SHOWN	DRAWN BY	R.B.K.
BY	J.M.B.	REVISION	1. 10/10/93 REVISED PER COMMENTS FROM CLIENT. 2. 10/10/93 REVISED PER COMMENTS FROM CLIENT.
DATE	10/10/93	FOR: VALE PROPERTIES	
L.T.R.	J.M.B.	L'AMBIANCE CONSTRUCTION DETAILS	
		SMALLY, WELLFORD & NALVEN, INC.	
		CONSULTING ENGINEERS & SURVEYORS	
		133 SOUTH MCINTOSH RD. SARASOTA, FLA. 33582	
		DESIGNED BY	MILLARD J. YODER
		CHECKED BY	FL. CERT. # 33765
		DRAWING NUMBER	8
		REVISION	C