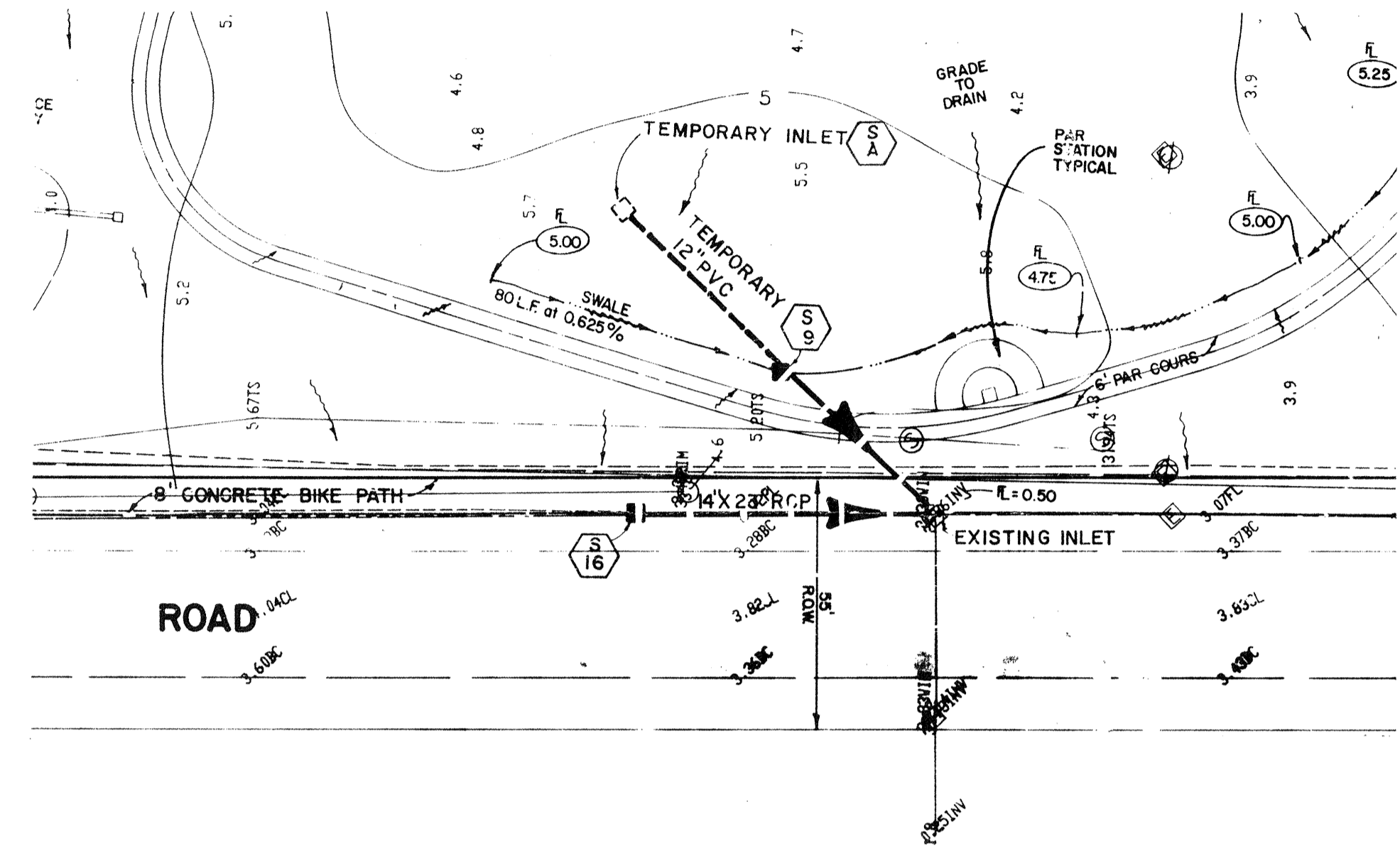
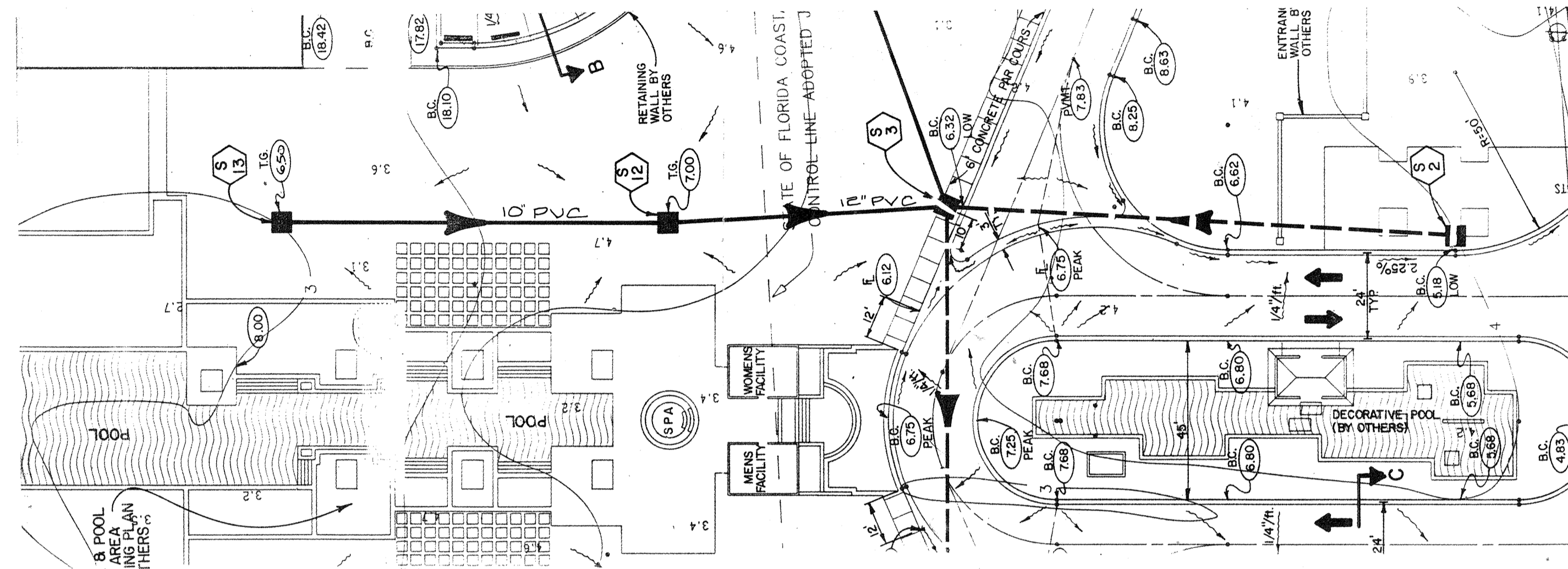
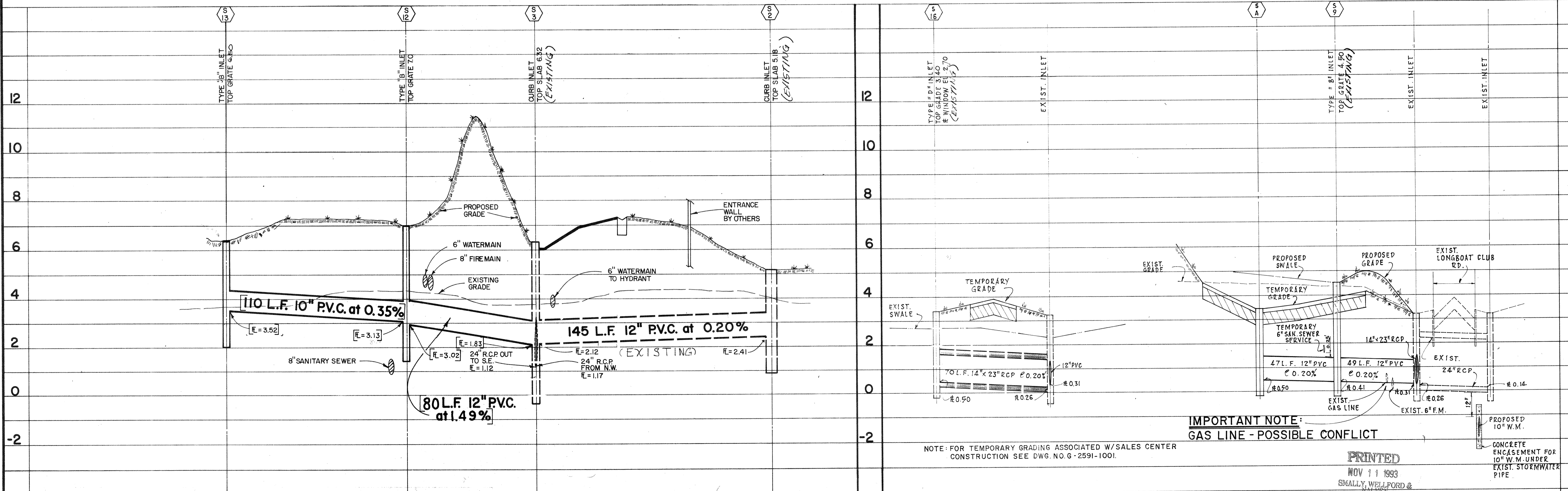


NOTE: THIS PLAN IS INTENDED FOR USE AS STORMWATER PLAN ONLY.



REFER TO DRAWING 7A FOR ADDITIONAL DETAIL



INFORMATION IN BRACKETS PROVIDED BY CONTRACTOR

NOTE: FOR TEMPORARY GRADING ASSOCIATED W/SALES CENTER CONSTRUCTION SEE DWG. NO. G-2591-1001.

IMPORTANT NOTE: GAS LINE - POSSIBLE CONFLICT

PRINTED  
NOV 11 1993  
SMALLY, WELLFORD & NALVEN  
A DIVISION OF THE SMALLY GROUP  
BARTON & PRUD'OM

DESIGNED BY J.M.B.	DATE: 7/90	SCALE: HORIZ. 1"=30' VERT. 1"=2'	BY M.J.V.	REVISION	L.T.R.	DATE 05/79	FOR: YALE PROPERTIES
CHECKED BY 2591	DRAWN BY R.B.K.	DRAWN BY MCCAS 1/3/91	PROJECT NO. 2591	STORMWATER PLAN ONLY NOTE: THIS PLAN IS FOR INFORMATION ONLY. NO FIELD SURVEYING REQUIRED.	DATE 12-15-93	SMALLY, WELLFORD & NALVEN, INC.	L'AMBIANCE STORM WATER PLAN & PROFILE
SARASOTA, FLA. 33582			133 SOUTH MCINTOSH RD.		CONSULTING ENGINEERS & SURVEYORS		DRAWING NUMBER 7
							REVISION F