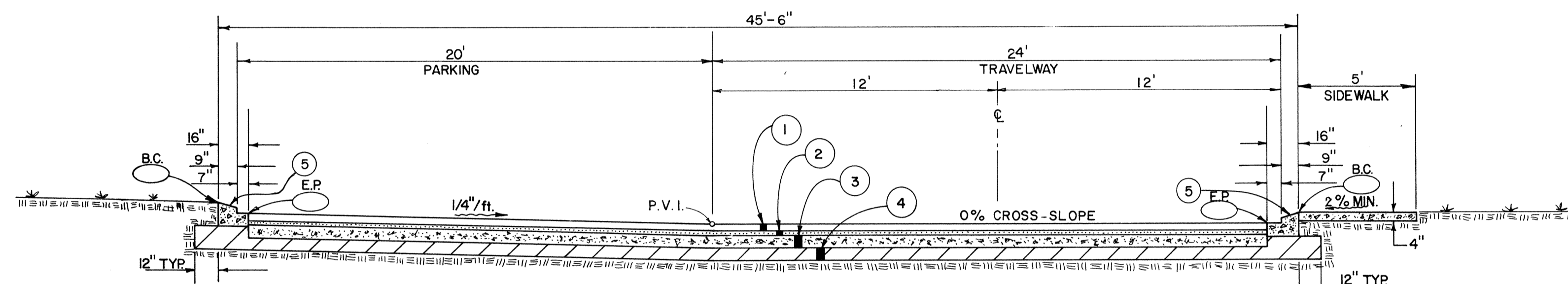


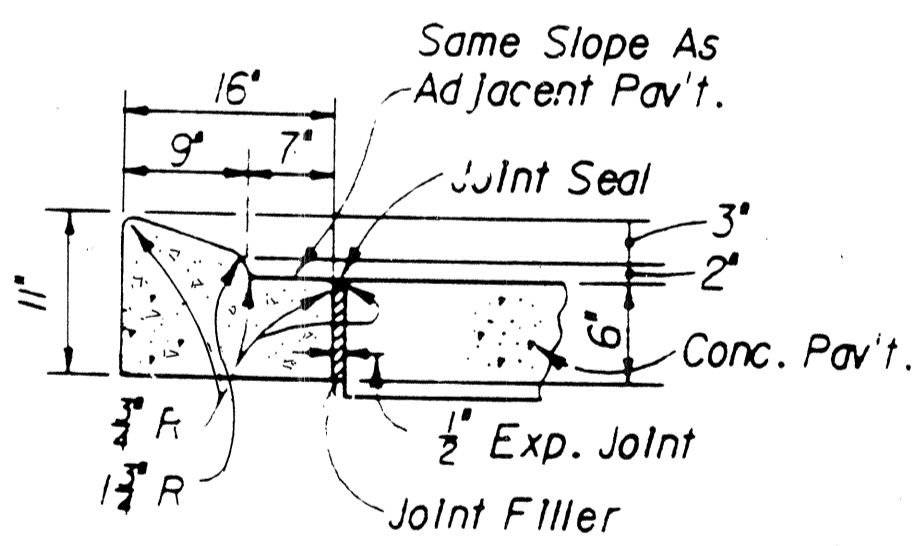
TYPICAL ROADWAY SECTION AT ENTRANCE
1" = 4"



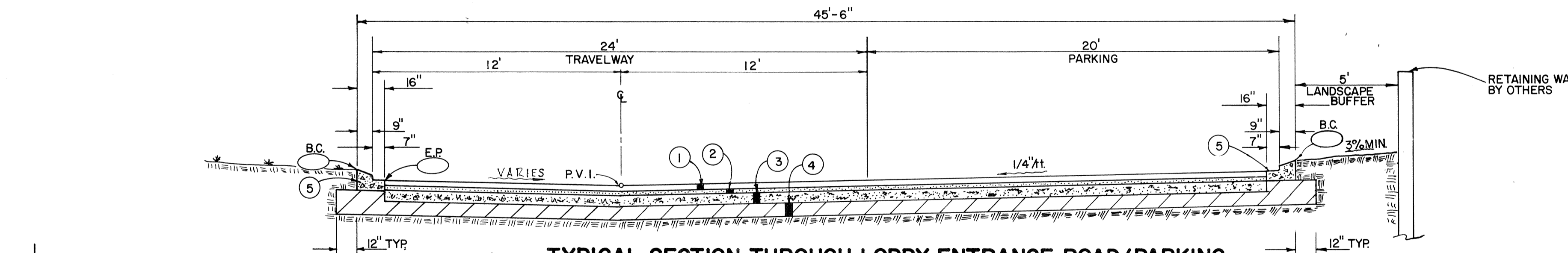
TYPICAL SECTION THROUGH BASEMENT ENTRANCE ROAD/PARKING SECTION "A-A"
1" = 4"

- LEGEND**
- ① 2 1/2" THICK, HEAVY DUTY SPECIAL PAVING BLOCK, 8,000 P.S.I. RATING REQUIRED. SHAPE, SIZE, MANUFACTURER AND STYLE AS APPROVED BY OWNER.
 - ② 1 1/2" SAND SETTING BED.
 - ③ THE BASE MATERIAL SHALL BE 6" THICK (MIN.) SHELL COMPACTED TO 98% MAXIMUM DENSITY BY A.A.S.H.T.O. METHOD T-180 (MODIFIED). MATERIAL SHALL HAVE A MINIMUM L.B.R. OF 100.
 - ④ 6" MIN. THICK COMPACTED SUBBASE TO 98% MAX. DENSITY BY A.A.S.H.T.O. METHOD T-180 (MODIFIED) FOR THE FULL 6" THICKNESS.
 - ⑤ TYPE "A" CURB.

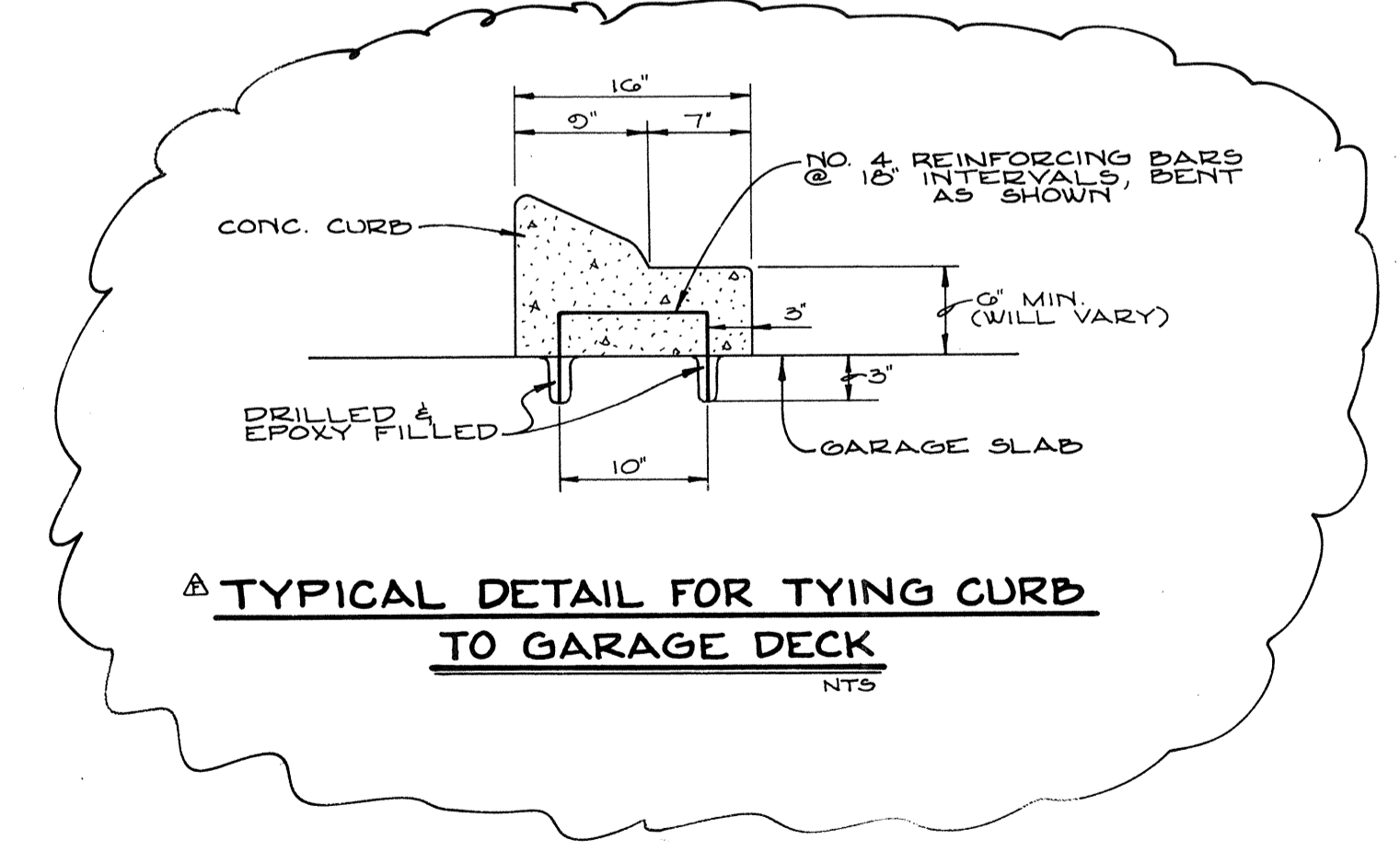
- NOTES**
- (A) ALL PAVER JOINTS TO BE FILLED WITH SCREENING SAND AND THEN SWEEPED CLEAN.
 - (B) ALL PAVEMENT CROSS-SLOPES TO BE 1/4"/ft. UNLESS OTHERWISE SHOWN ON PLANS.
 - (C) CURB IS TO BE SLOPED IN DIRECTION OF PAVEMENT.
 - (D) BACK OF CURB (B.C.) GRADE IS 0.42' HIGHER THAN EDGE OF PAVEMENT (E.P.) GRADE.



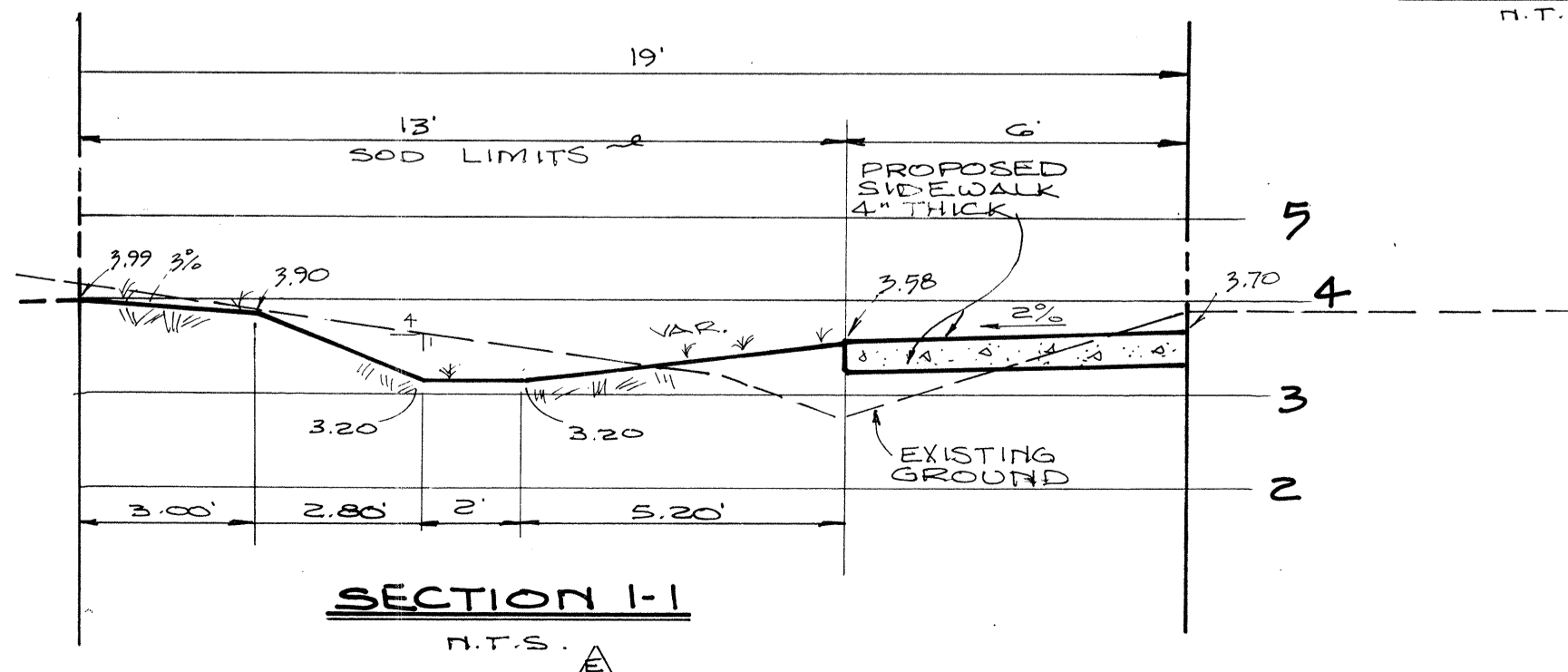
TYPE "A" CURB
N.T.S.



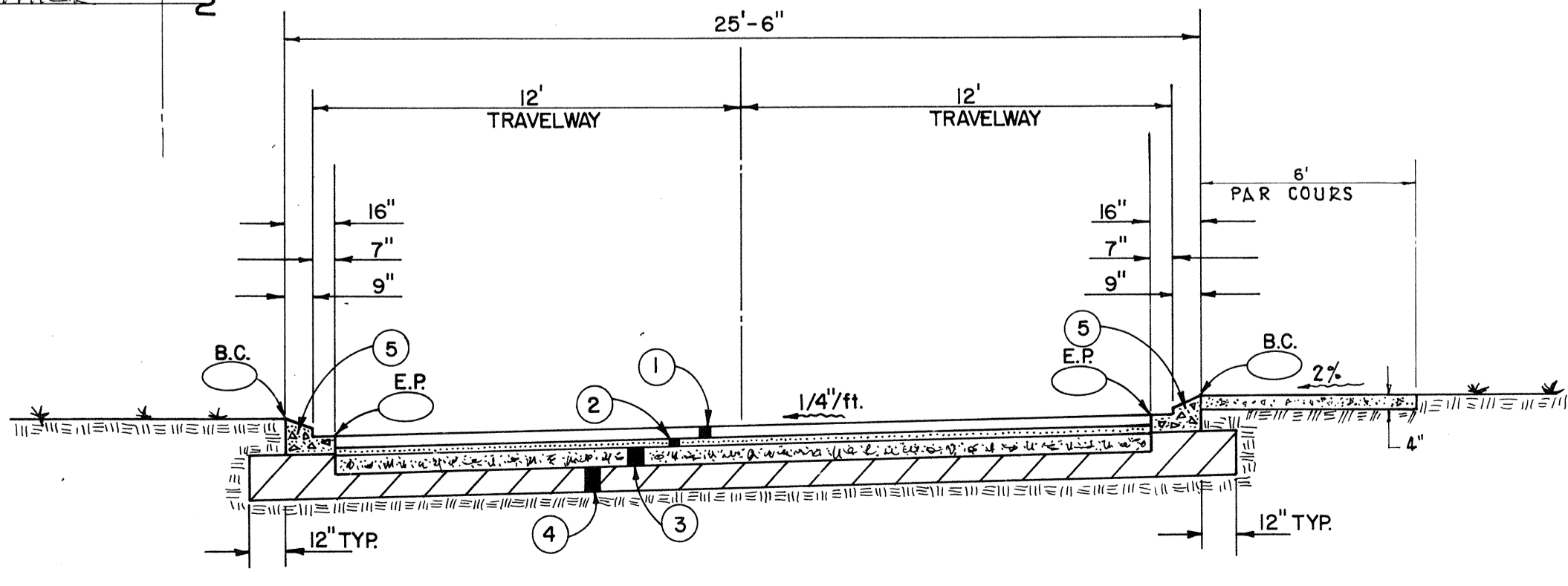
TYPICAL SECTION THROUGH LOBBY ENTRANCE ROAD/PARKING SECTION "B-B"
1" = 4"



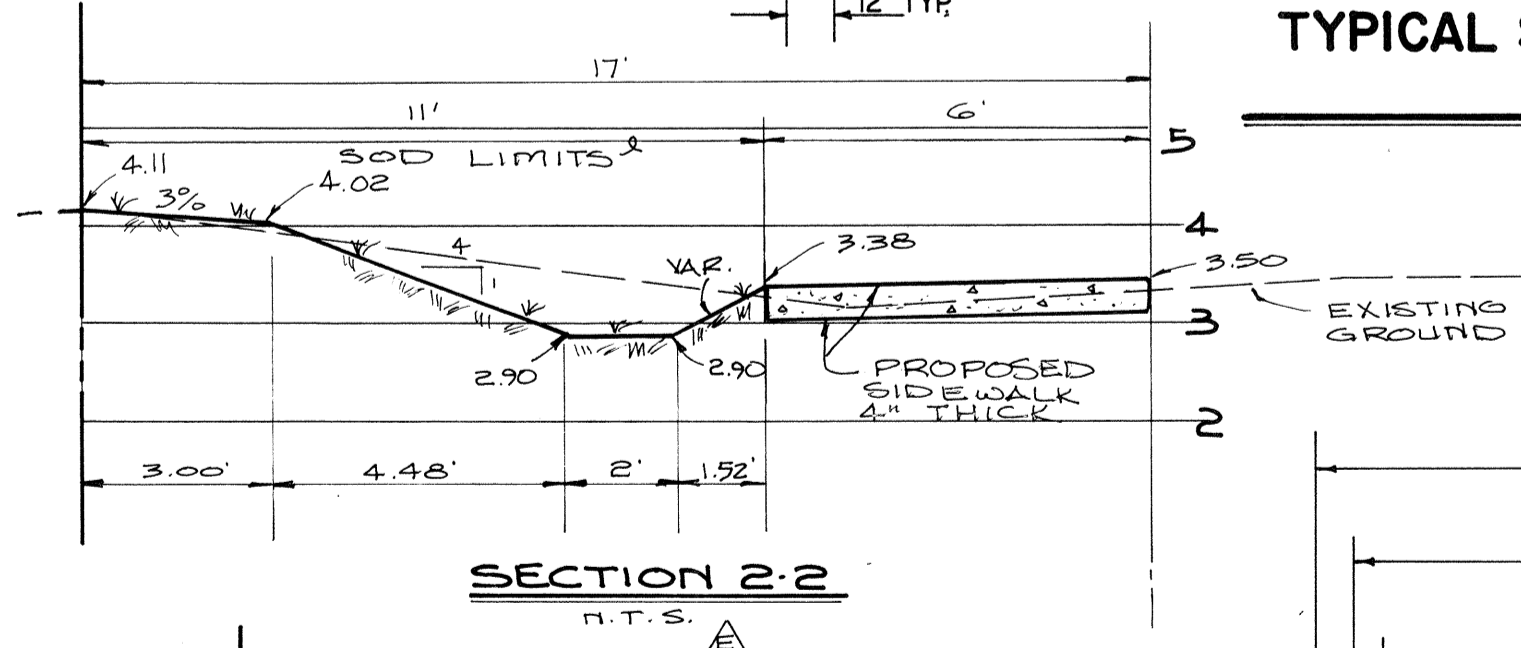
TYPICAL DETAIL FOR TYING CURB TO GARAGE DECK
N.T.S.



SECTION 1-1
N.T.S.



TYPICAL TRAVELWAY SECTION SECTION "C-C"
1" = 4"



SECTION 2-2
N.T.S.

NOTE: FOR UNDERDRAIN PLAN & SECTIONS & PROFILES- SEE DWG. 20.

PRINTED
NOV 11 1993
SMALLY, WELLFORD & NALVEN
A DIVISION OF WILSON, MILLER & BARTON, P.C.

DESIGNED BY	J.M.B.	DATE	7/90	CHECKED BY	R.B.K.	PROJECT NO.	2591
SCALE	1" = 4"	DRAWN BY	R.B.K.	REVISION	REVISION 1: 12/28/90 2: 12/28/90 3: 12/28/90 4: 12/28/90 5: 12/28/90		
BY	R.B.K.	DATE	12/28/90	L.T.R.	1: 12/28/90 2: 12/28/90 3: 12/28/90 4: 12/28/90 5: 12/28/90		
CONSULTING ENGINEERS & SURVEYORS SMALLY, WELLFORD & NALVEN, Inc. 133 SOUTH MCINTOSH RD. SARASOTA, FLA. 33592							
L'AMBANCE TYPICAL PAVEMENT SECTIONS DRAWING NUMBER 3							
INDEX NO. G-2591-008							