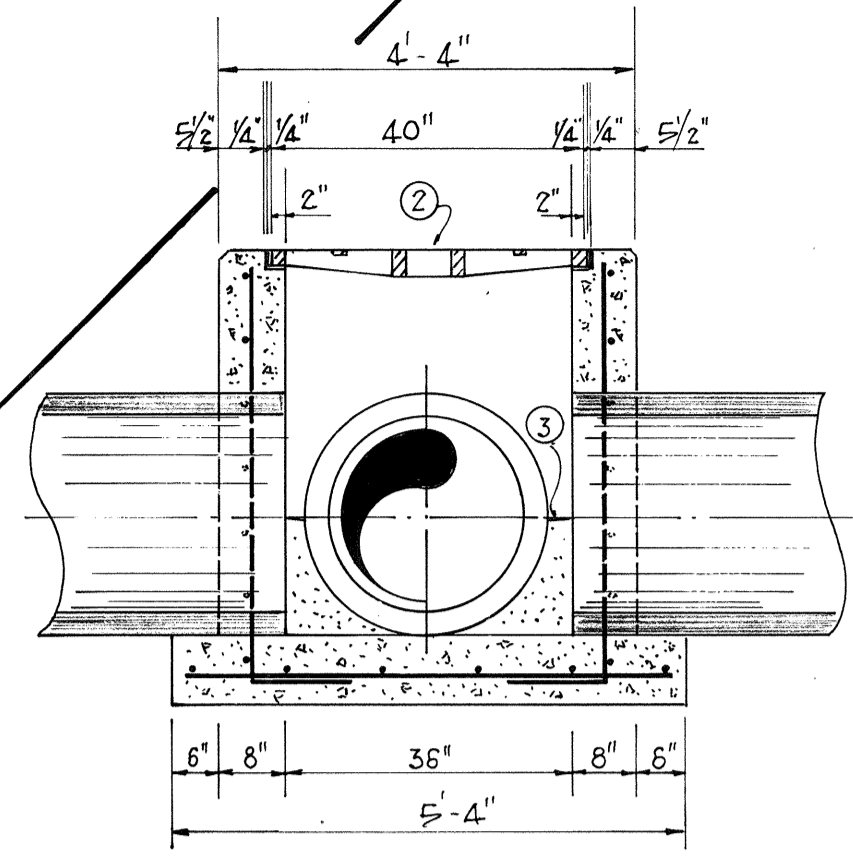
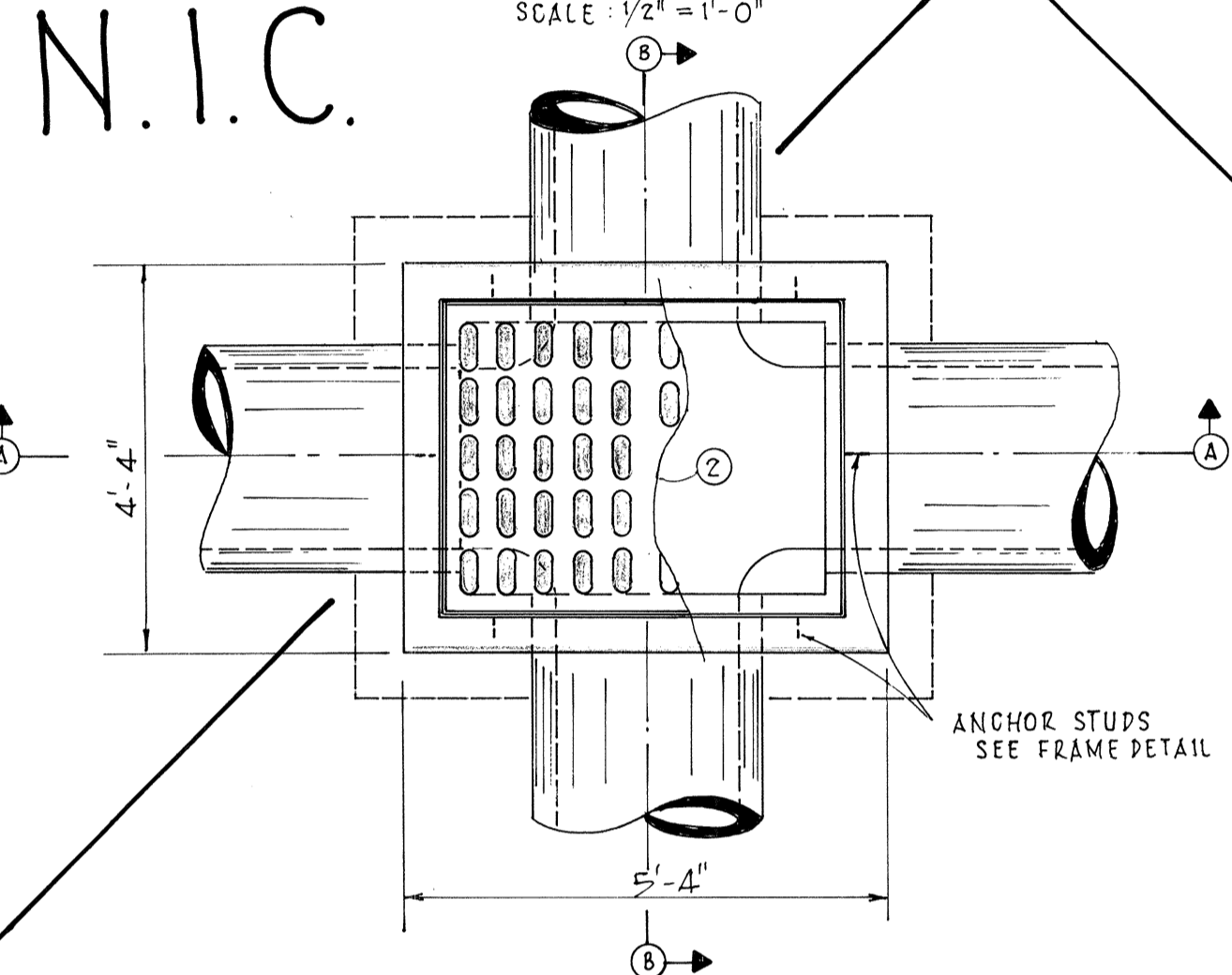


SECTION A-A
SCALE: 1/2" = 1'-0"

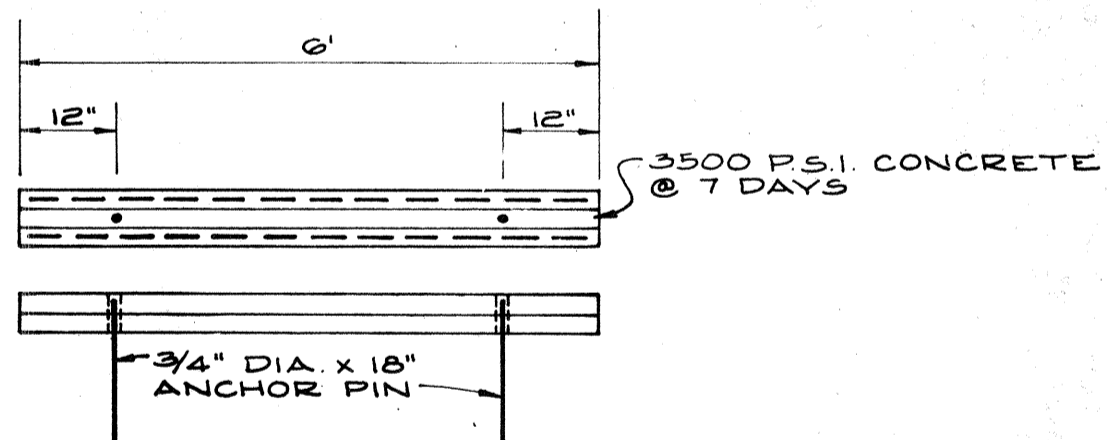


SECTION B-B
SCALE: 1/2" = 1'-0"

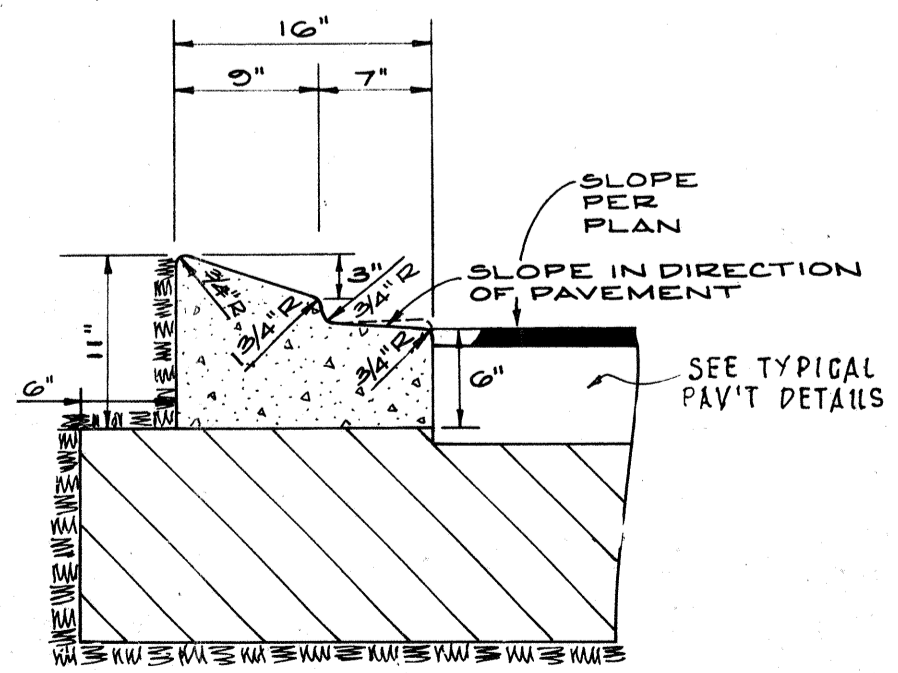


PLAN
SCALE: 1/2" = 1'-0"

TYPE "A" INLET
SCALE: 1/2" = 1'-0"



CONCRETE WHEEL STOP DETAIL
SCALE: 1" = 2'-0"



TYPE "A" CURB
SCALE: 1" = 1'-0"

NOTE: WHEN USED ON HIGH SIDE OF ROADWAY, THE CROSS SLOPE OF THE GUTTER SHALL MATCH THE CROSS SLOPE OF THE ADJACENT PAVEMENT AND THE THICKNESS OF THE LIP SHALL BE 6".

LOAD RATING*

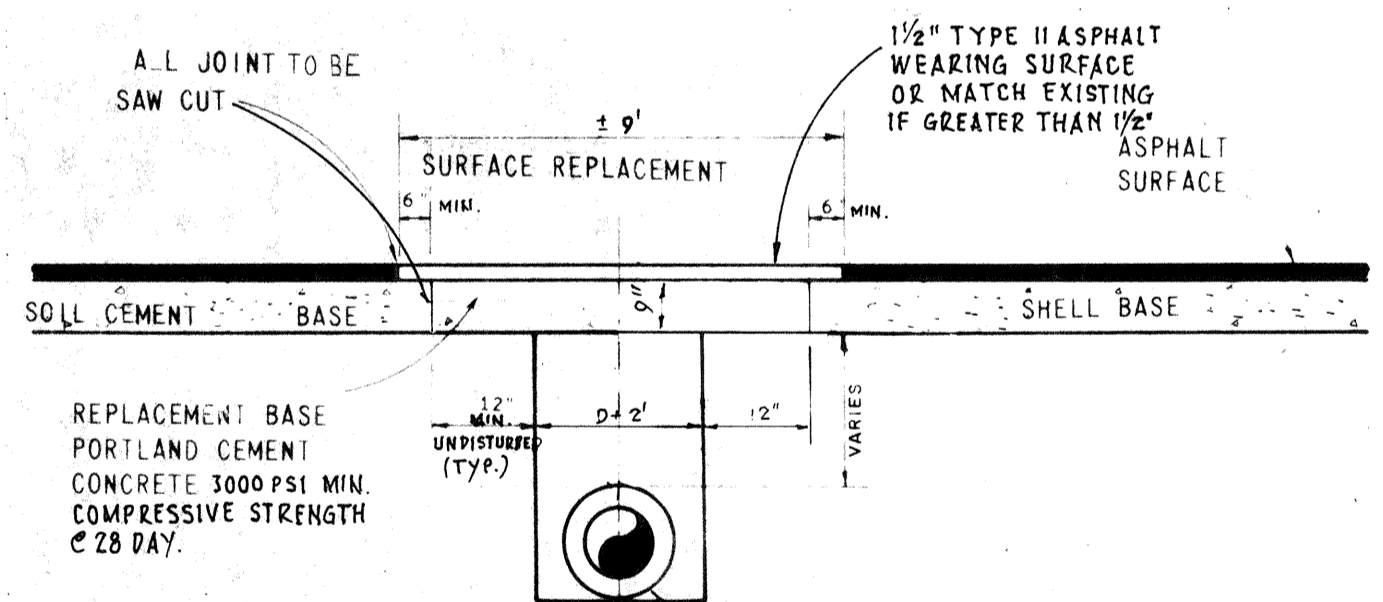
2-SIDED SHORT SPAN H	2-SIDED LONG SPAN	4-SIDED BEARING AREA H	FLOW AREA	TOTAL HEIGHT
			850	630

*HEAVY DUTY

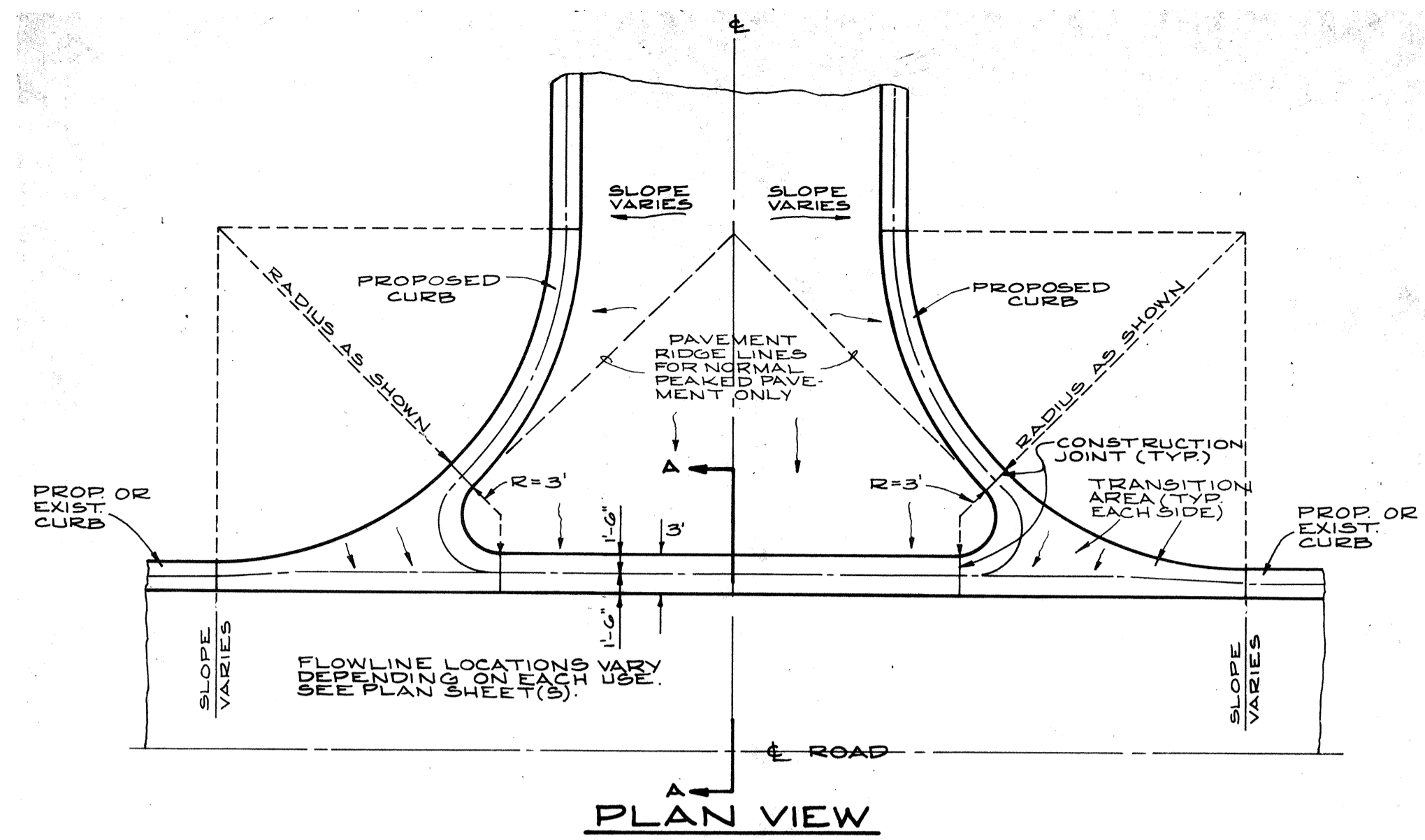
USF 6290 INLET GRATE



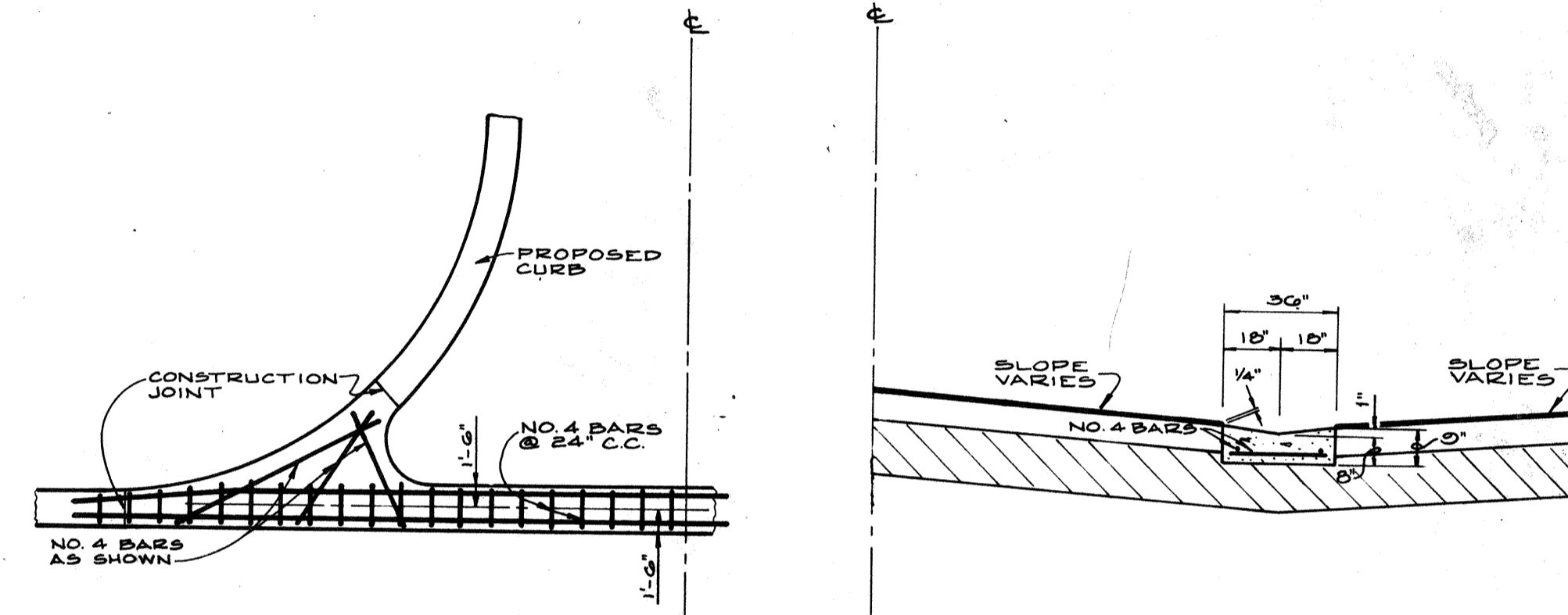
- CONSTRUCTION NOTES:
- 1,000 P.S.I. CONCRETE @ 28 DAYS SHALL BE USED THROUGHOUT.
 - U.S.F. GRATE NO. 6290 W/51" X 41" STEEL FRAME BEARING ON ALL FOUR SIDES.
 - POURED CONCRETE INVERT ANTER INLET AND PIPES ARE PLACED IN GROUND, 3,000 P.S.I. @ 28 DAYS.
 - SEE PLAN AND PROFILE DRAWINGS FOR PIPE SIZE, WD ALIGNMENT.
 - 1/4" CHAMFERS ALL EXPOSED EDGES IN YARD AREAS, 1/4" TOOLED IN PAVEMENT AREAS.
 - FRAME SHALL BE COATED WITH 2 APPLICATIONS OF A BITUMASTIC BASED PAINT SUCH AS INTEROL 49 THICK OR EQUAL.



OPEN-CUT ROAD REPLACEMENT DETAIL
N.T.S.



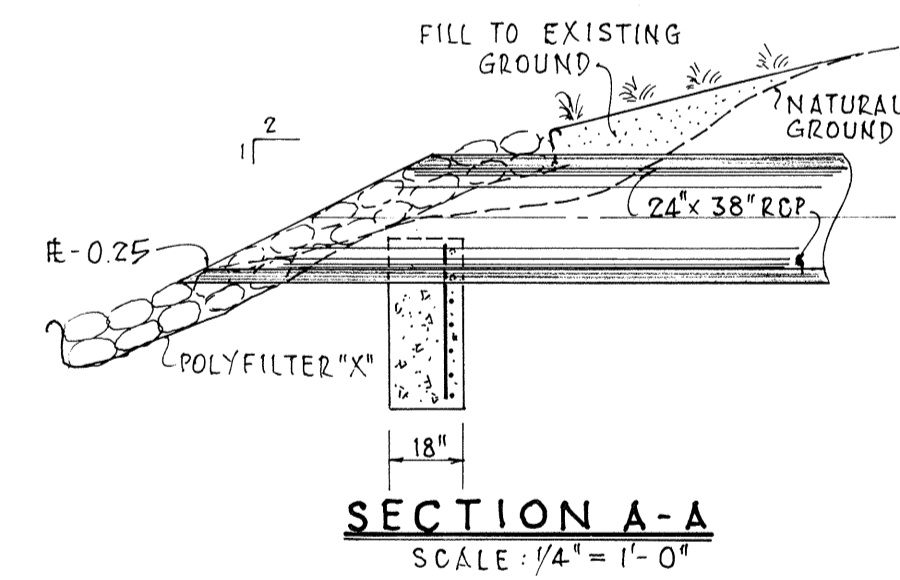
PLAN VIEW



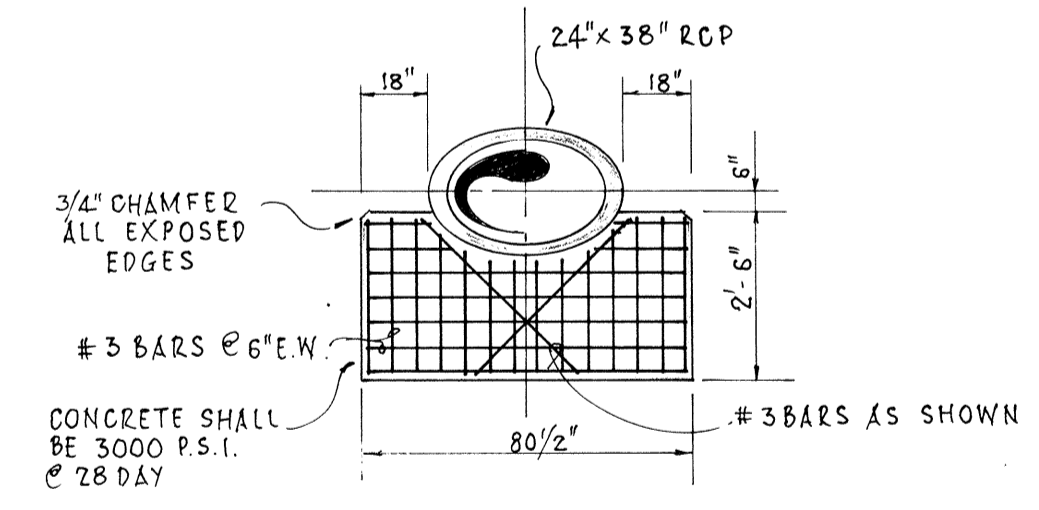
STEEL REINFORCING

SECTION "A-A"

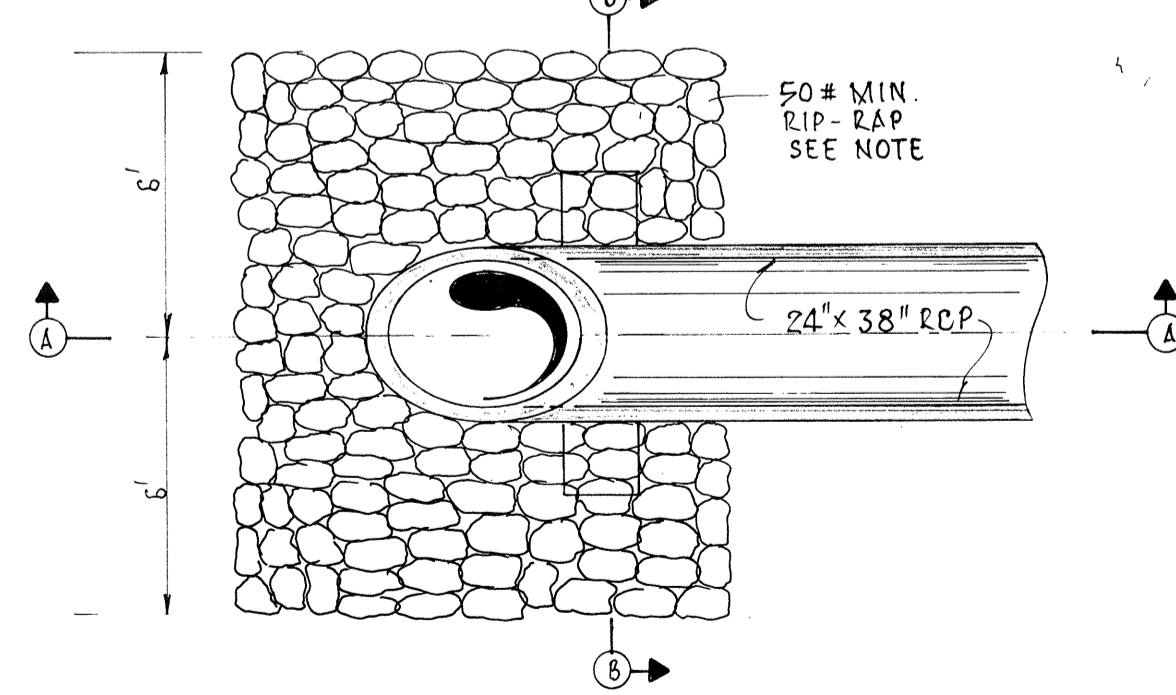
VALLEY CROSSING
SCALE: N.T.S.



SECTION A-A
SCALE: 1/4" = 1'-0"



SECTION B-B
SCALE: 1/4" = 1'-0"



PLAN
SCALE: 1/4" = 1'-0"

ENDWALL DETAIL
SCALE: 1/2" = 1'-0"

NOTE: RIP-RAP SHALL BE SUPPLIED & CONSTRUCTED AS DEFINED IN THE FLORIDA DEPARTMENT OF TRANSPORTATION SPECIFICATIONS - SECTION 530, "RIP-RAP" SPECIFICALLY SECTION 530-3.3 "CONSTRUCTION METHODS" EXCEPTING THE MEASUREMENT SHALL BE AS DEFINED IN THE CONTRACT DOCUMENTS, PER SQUARE YARD.

FOR: YALE PROPERTIES

DESIGNED BY: J.M.B.

DATE: JUNE 1990

CHECKED BY: MILLARD J. YODEL, P.E.

PROJECT NO: 2591

FLA. CERT. NO. 33765

REVISION: 11

SCALE: AS SHOWN

DRAWN BY: E.P.

DATE: 12/20/70

REVISION: REVISE OPEN-CUT RD REPLACEMENT DETAIL

DATE: 12/20/70

L.T.R.: "K"

133 SOUTH MCINTOSH RD.

CONSULTING ENGINEERS & SURVEYORS

SARASOTA, FLA. 33582

SMALLY, WELLFORD & NALVEN, Inc.

STORMWATER CONSTRUCTION DETAILS

1' AMBIANCE

PRINTED NOV 14 1993

SMALLY, WELLFORD & NALVEN, Inc.

DRAWING NUMBER 11

REVISION "A"

INDEX NO. G-2591-016