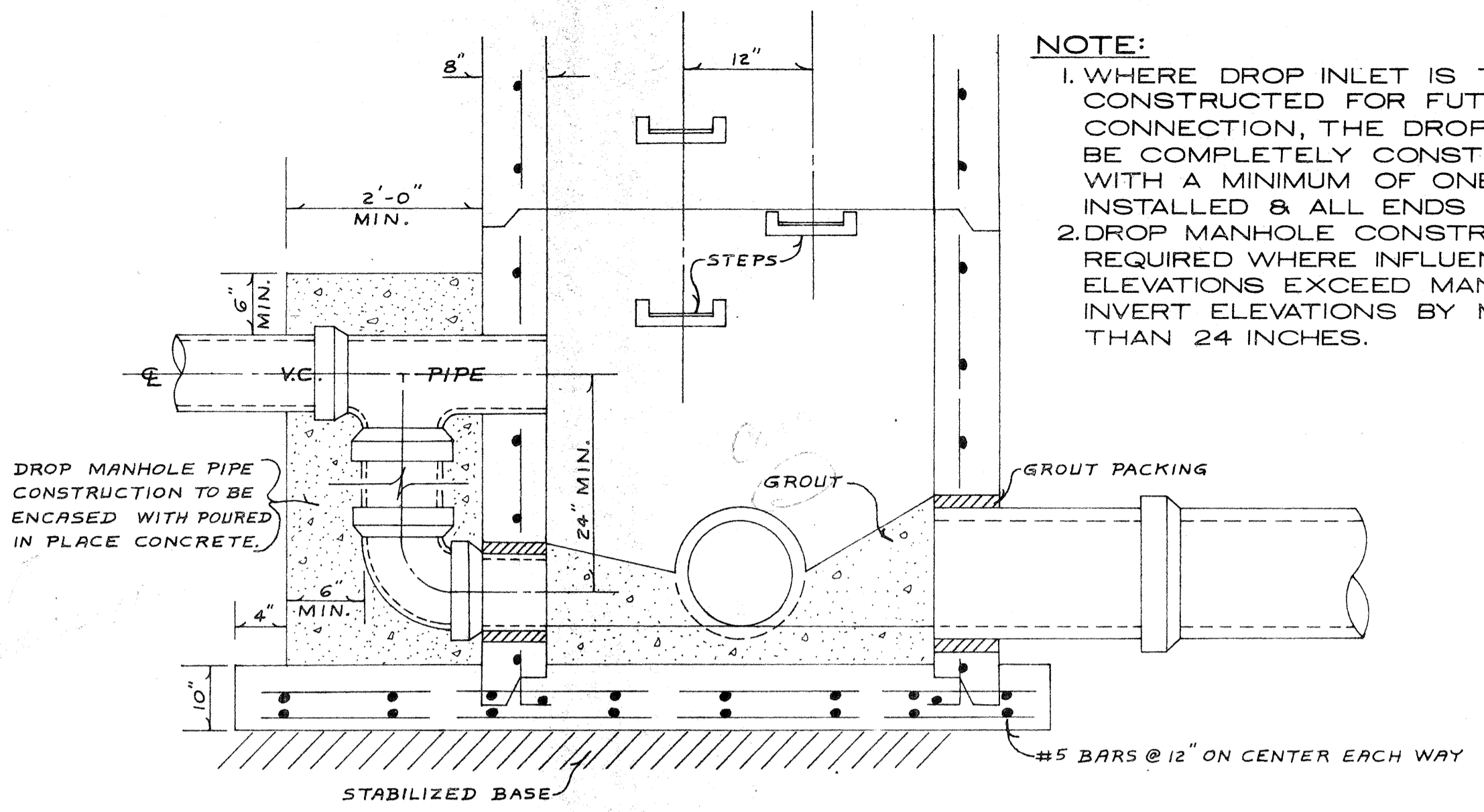


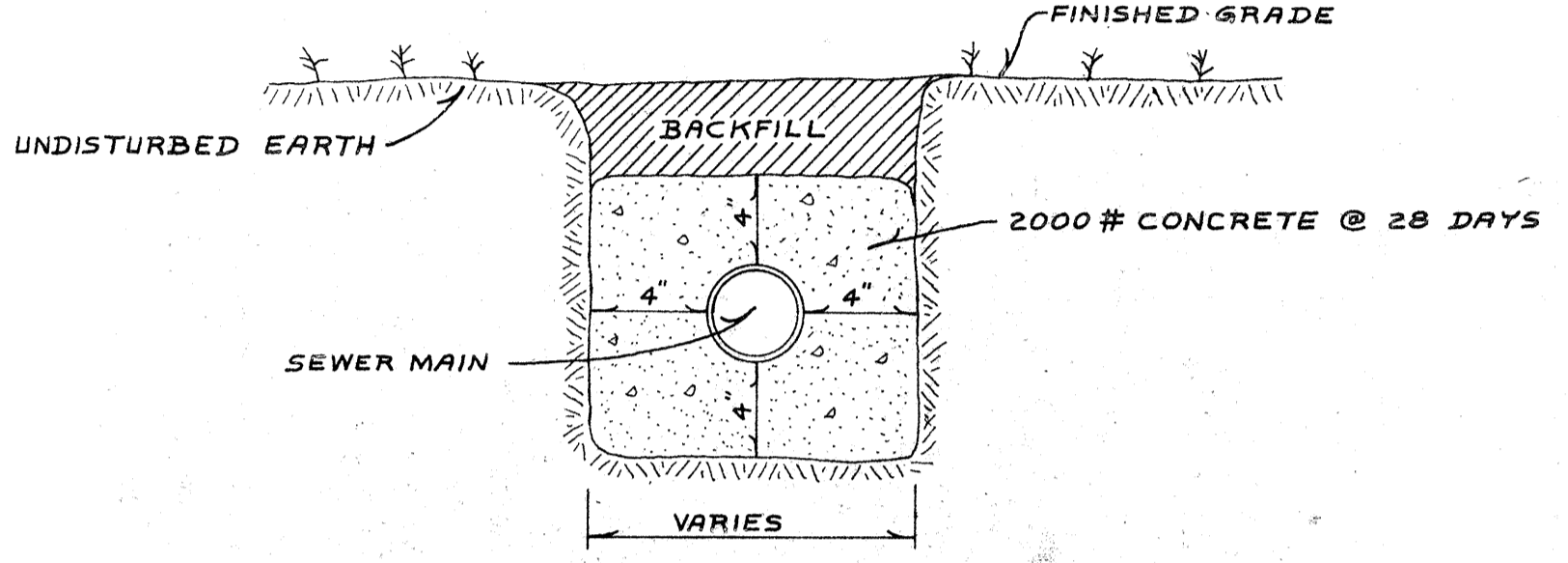
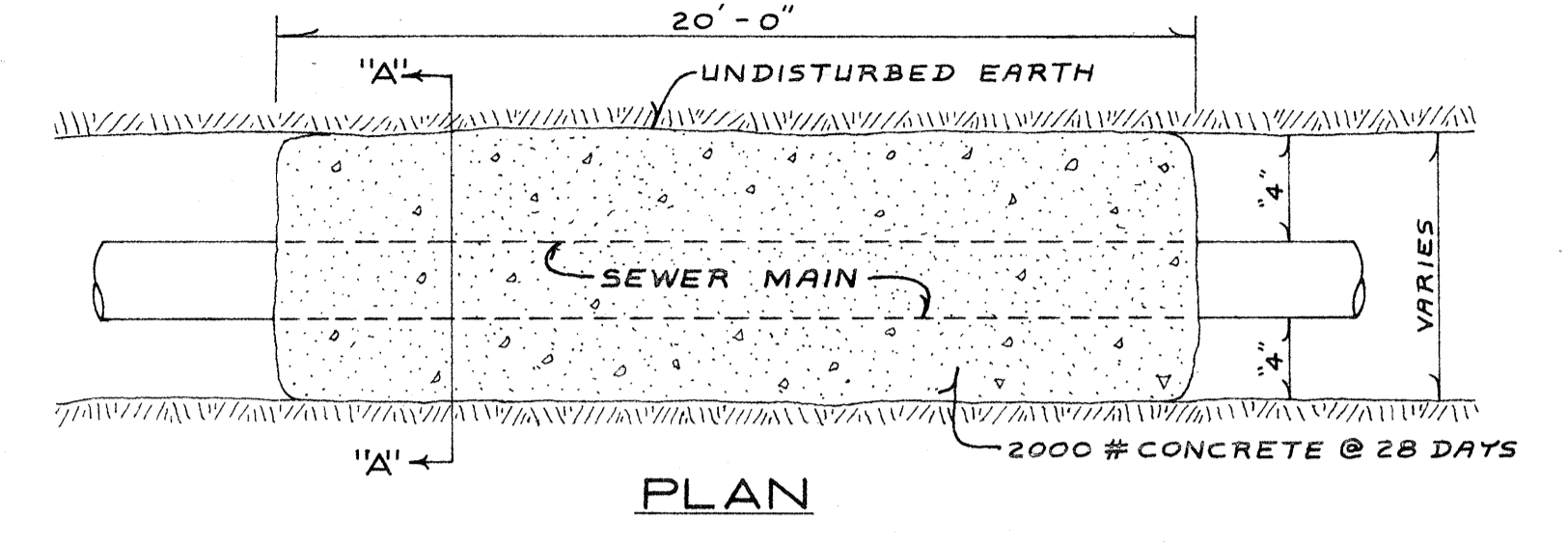
SHALLOW MANHOLE
(DEPTH LESS THAN 5'-0")



TYPICAL DROP MANHOLE

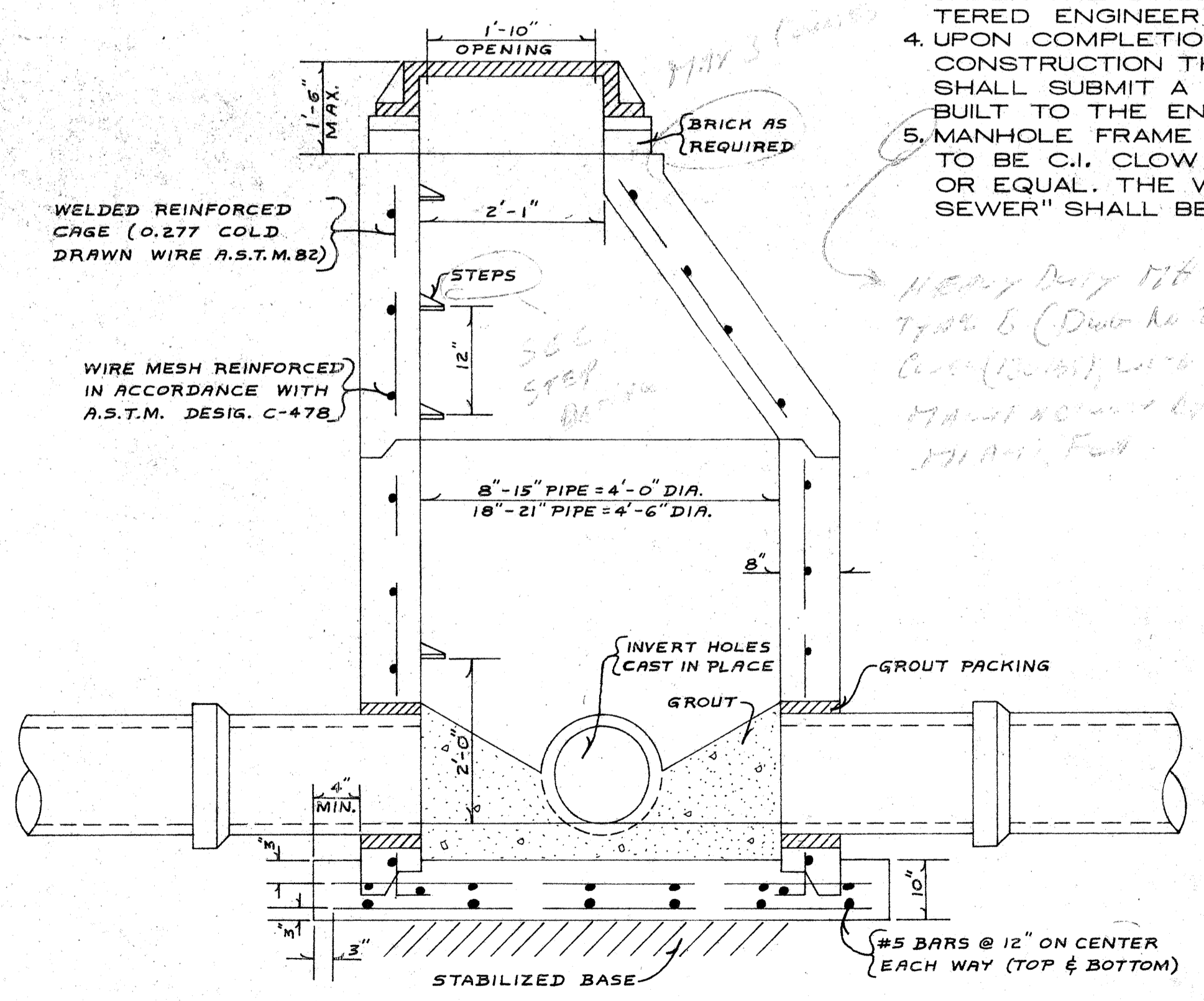
NOTE:
1. WHERE DROP INLET IS TO BE CONSTRUCTED FOR FUTURE CONNECTION, THE DROP SHOULD BE COMPLETELY CONSTRUCTED WITH A MINIMUM OF ONE JOINT INSTALLED & ALL ENDS PLUGGED.
2. DROP MANHOLE CONSTRUCTION IS REQUIRED WHERE INFLUENT PIPE ELEVATIONS EXCEED MANHOLE INVERT ELEVATIONS BY MORE THAN 24 INCHES.

NOTE:
WHERE SEWER & WATER MAINS CROSS WITHIN LESS THAN 18" VERTICAL CLEARANCE, THE SEWER MAIN WILL BE ENCASED IN CONCRETE FOR A DISTANCE OF 10' EACH SIDE OF THE POINT OF INTERSECTION. WHERE SEWER MAINS PASS BENEATH STORM DRAINS WITH LESS THAN 18" VERTICAL CLEARANCE, THE SEWER MAINS WILL AGAIN BE ENCASED IN CONCRETE.

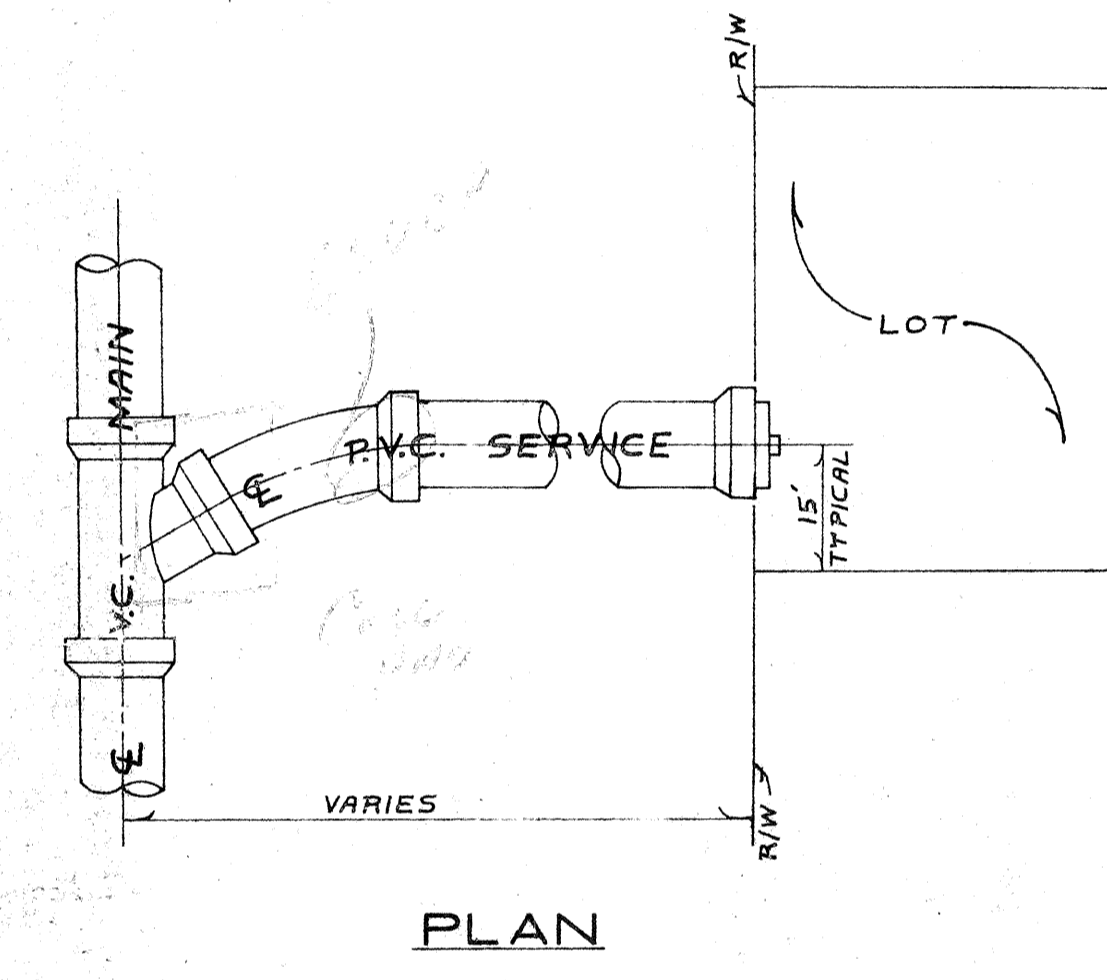


CONCRETE ENCASEMENT DETAIL

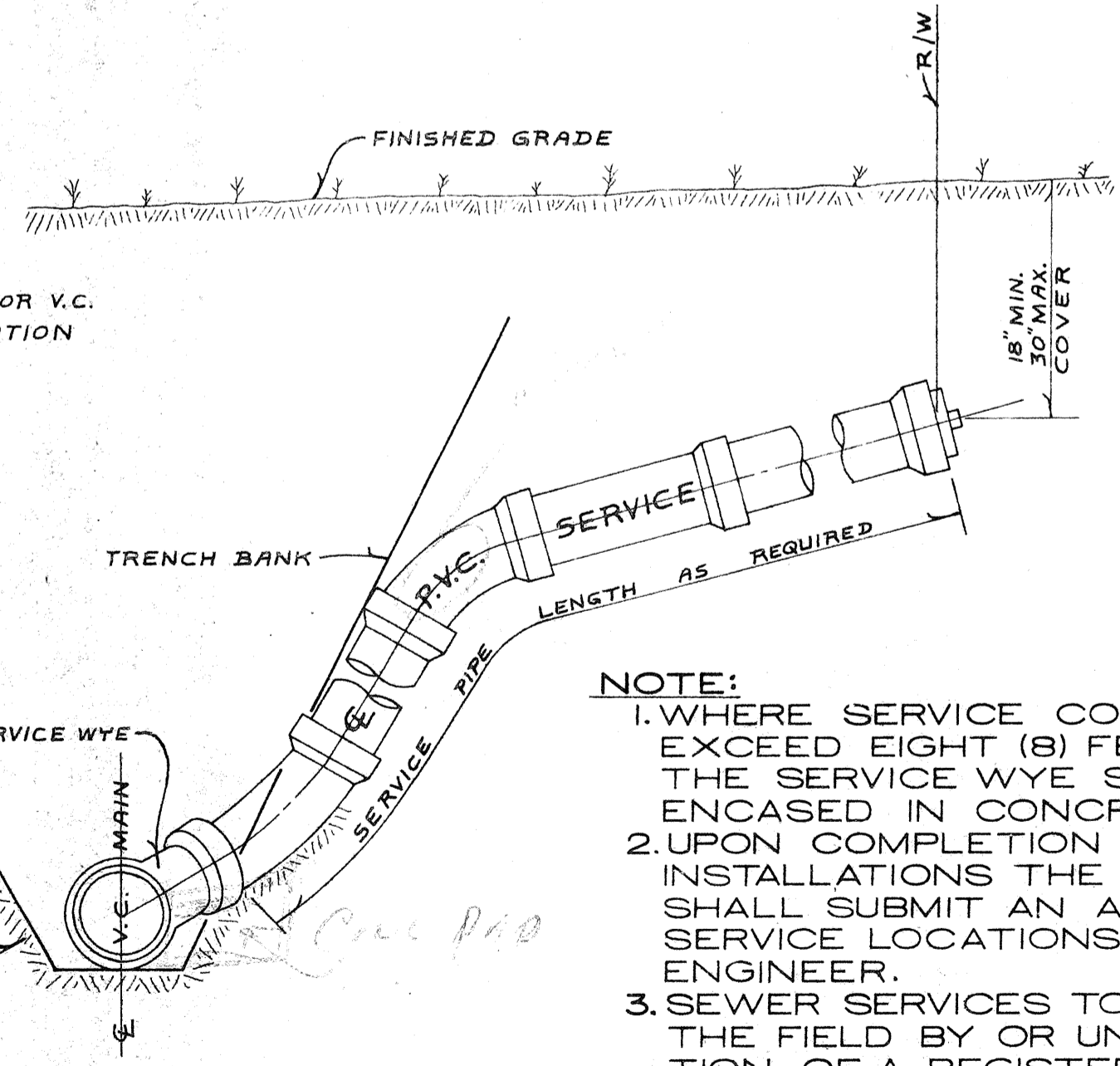
NOTE:
1. INVERT HOLES TO BE CAST IN PLACE & 2" LARGER THAN PIPE O.D.
2. ALL CONCRETE USED SHALL BE CLASS III & CONFORM TO OR EXCEED REQUIREMENTS OF A.S.T.M. DESIGNATION C-478 FOR PRECAST CONCRETE MANHOLES.
3. MANHOLE LOCATIONS TO BE STAKED IN THE FIELD (PER PLANS) BY OR UNDER THE DIRECTION OF A REGISTERED ENGINEER & OR SURVEYOR.
4. UPON COMPLETION OF MANHOLE CONSTRUCTION THE CONTRACTOR SHALL SUBMIT A LOCATION AS-BUILT TO THE ENGINEER.
5. MANHOLE FRAME & SOLID COVER TO BE C.I. CLOW NATIONAL F-3220 OR EQUAL. THE WORDS "SANITARY SEWER" SHALL BE CAST IN COVER.



STANDARD PRECAST MANHOLE

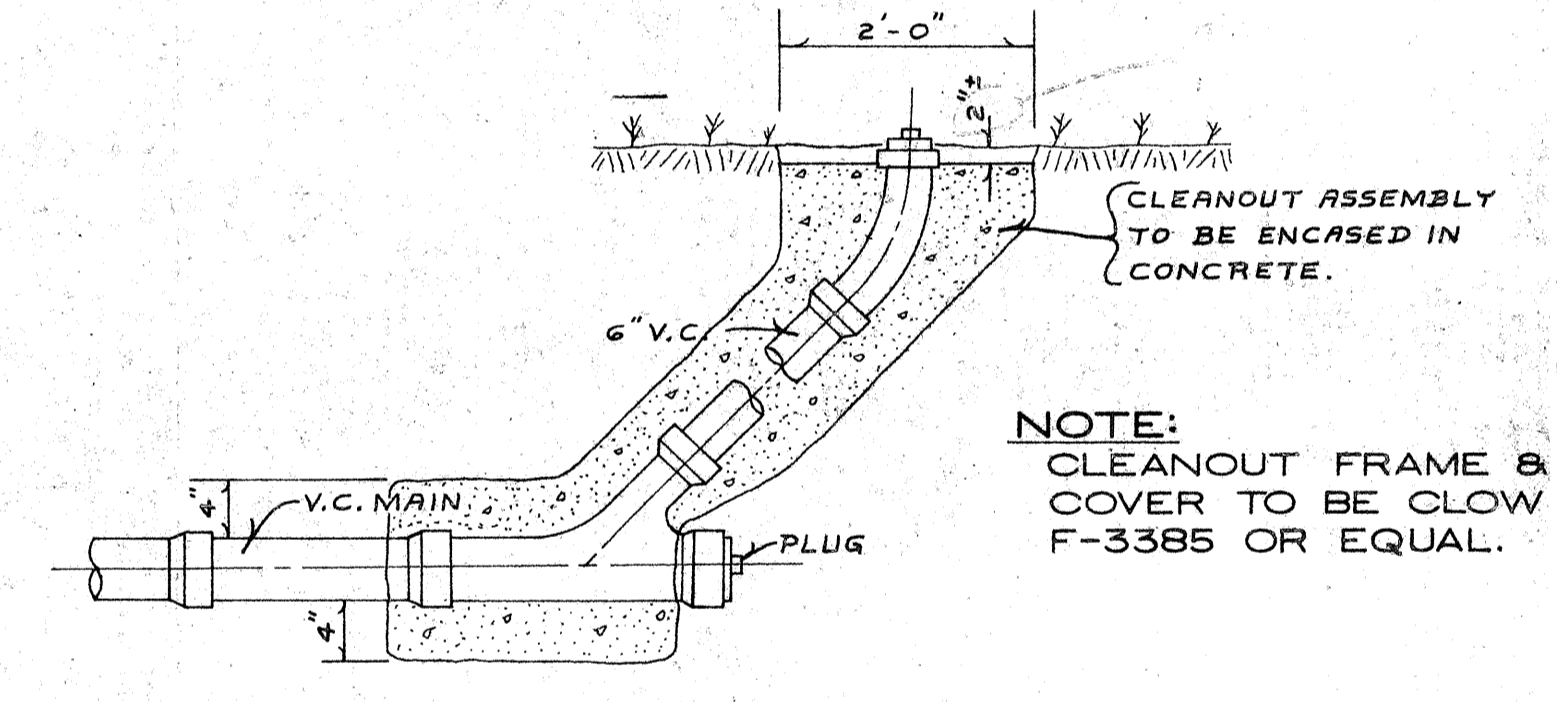


PLAN



SECTION
TYPICAL SERVICE CONNECTION

NOTE:
1. WHERE SERVICE CONNECTIONS EXCEED EIGHT (8) FEET IN DEPTH, THE SERVICE WYE SHALL BE ENCASED IN CONCRETE.
2. UPON COMPLETION OF SERVICE INSTALLATIONS THE CONTRACTOR SHALL SUBMIT AN AS-BUILT OF SERVICE LOCATIONS TO THE ENGINEER.
3. SEWER SERVICES TO BE STAKED IN THE FIELD BY OR UNDER THE DIRECTION OF A REGISTERED ENGINEER AND/OR LAND SURVEYOR.



CLEAN-OUT DETAIL

SEWER CONSTRUCTION DETAILS

FOR
HIDEAWAY BAY
IN
SEC. 19 TWP. 34S., RGE. 17E.
MANATEE COUNTY, FLORIDA
FOR: COMPASS DEVELOPMENT CORP.

| | | | |
|----------|--------|---------|---------|
| DESIGNED | M.S.D. | DATE | 10-6-75 |
| DRAWN | R.C.L. | JOB NO. | 123 |
| CHECKED | M.S.D. | SCALE | |
| APPROVED | R.C.L. | SHEET | 4 OF 4 |
| REVISED | | | |
| 1 | 3 | | |
| 2 | 4 | | |

ROBERTS & ZOLLER, INC.
CONSULTING ENGINEERS
ENGINEERING, SURVEYING, PLANNING
P.O. Box 12
BRADENTON, FLORIDA 33506

Robert Zoller