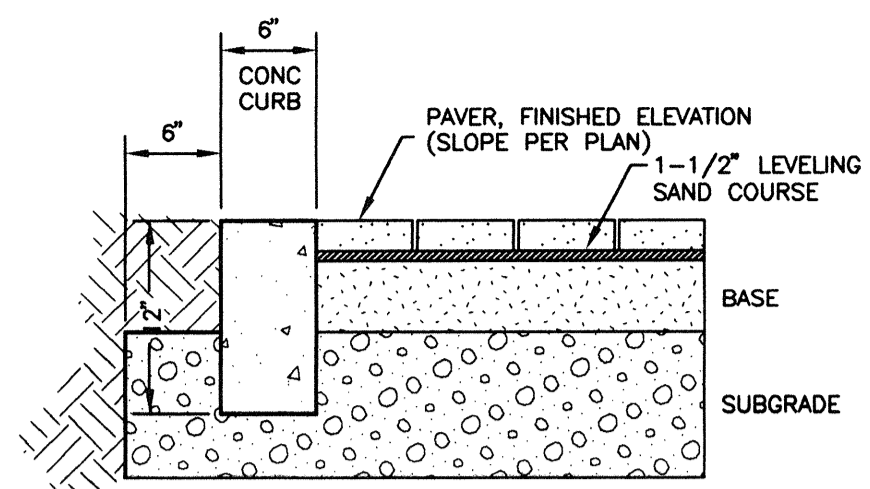
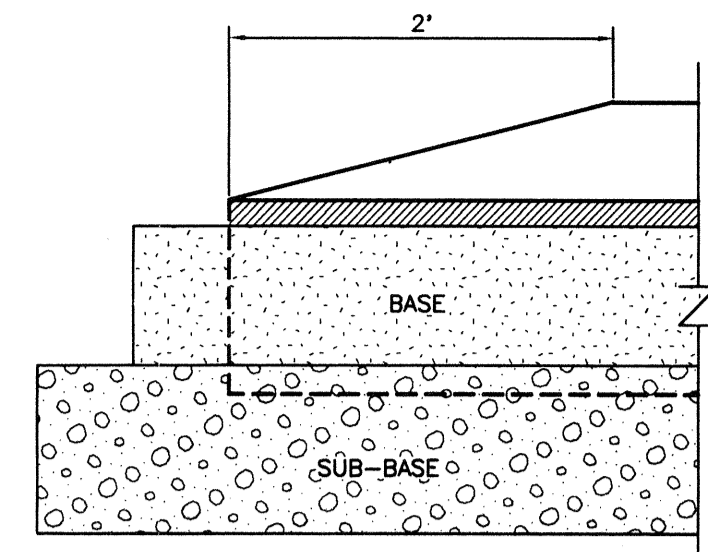


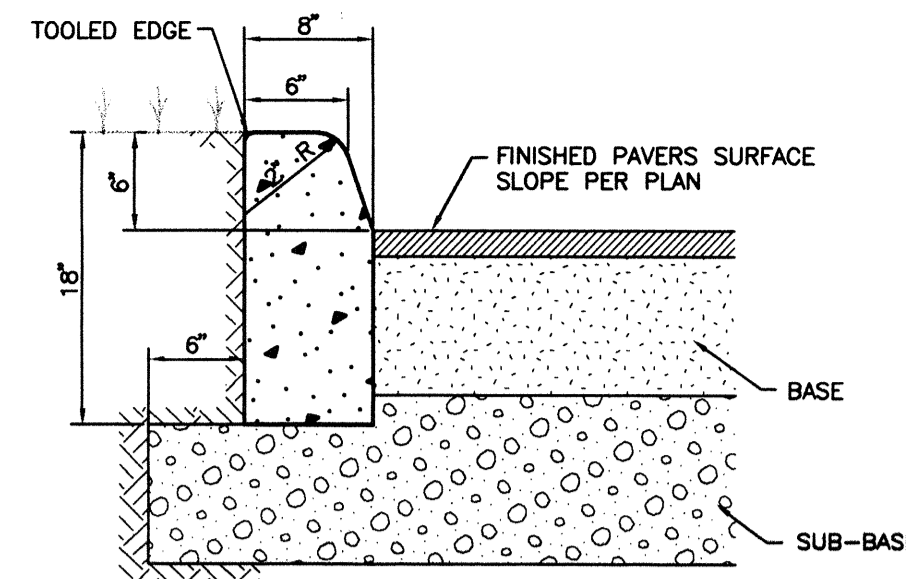
**18" CONCRETE FLUSH CURB DETAIL**  
N.T.S.



**6" CONCRETE FLUSH CURB AND PAVEMENT DETAIL**  
N.T.S.



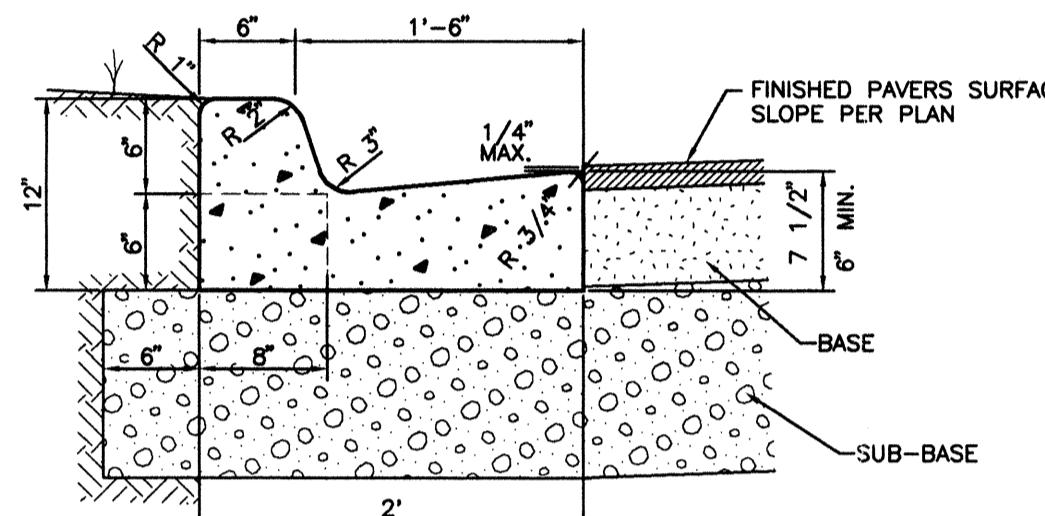
**TYPE "D" CURB END TAPER**  
S-P054 N.T.S.



**CURB NOTES:**

- 1) CONCRETE SHALL HAVE A COMPRESSIVE STRENGTH OF 3,000 P.S.I. IN 28 DAYS UNLESS OTHERWISE NOTED.
- 2) AN EXPANSION JOINT WILL BE PLACED AT THE END OF ALL RETURNS AT INTERVALS NOT TO EXCEED 50'. CONTRACTION JOINTS AT A MAXIMUM SPACING OF 10' SHALL BE SAW CUT AT DEPTH PER FDOT INDEX NO. 300
- 3) EXPANSION JOINTS SHALL BE CONSTRUCTED WITH 1/2" BITUMINOUS IMPREGNATED EXPANSION JOINT MATERIAL.

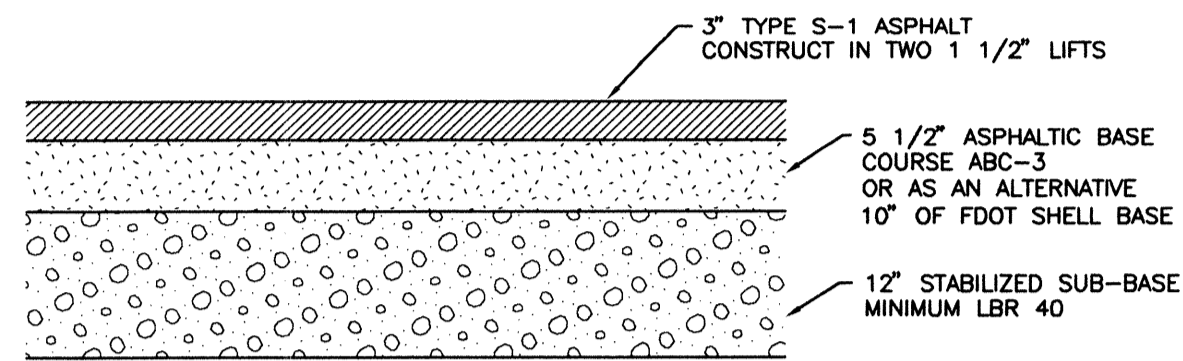
**TYPE "D" CURB**  
S-P002 N.T.S.



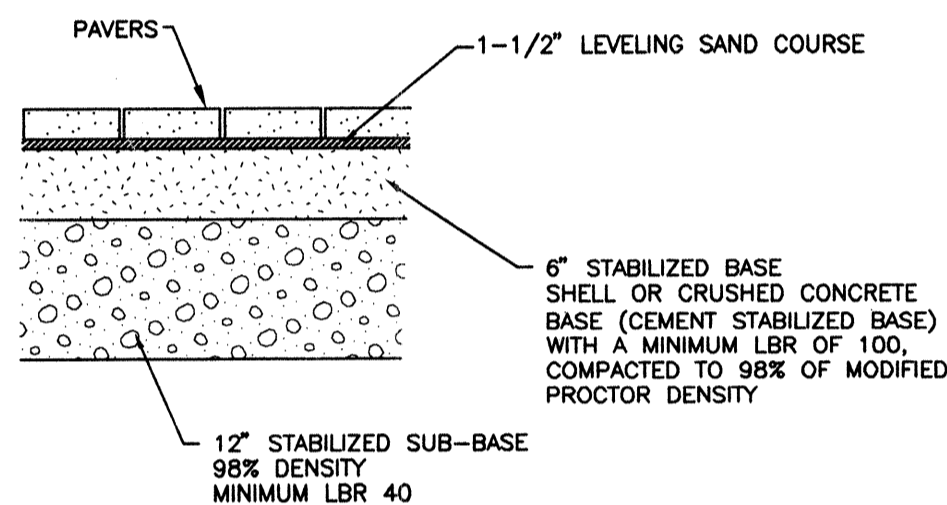
**CURB NOTES:**

- 1) CONCRETE SHALL HAVE A COMPRESSIVE STRENGTH OF 3,000 P.S.I. IN 28 DAYS UNLESS OTHERWISE NOTED.
- 2) WHEN USED ON THE HIGH SIDE OF THE ROADWAYS THE CROSS SLOPE OF THE GUTTER SHALL MATCH THE CROSS SLOPE OF THE ADJACENT PAVEMENT.
- 3) AN EXPANSION JOINT WILL BE PLACED AT THE END OF ALL RETURNS AT INTERVALS NOT TO EXCEED 50'. CONTRACTION JOINTS AT A MAXIMUM SPACING OF 10' SHALL BE SAW CUT AT DEPTH PER FDOT INDEX NO. 300
- 4) EXPANSION JOINTS SHALL BE CONSTRUCTED WITH 1/2" BITUMINOUS IMPREGNATED EXPANSION JOINT MATERIAL.

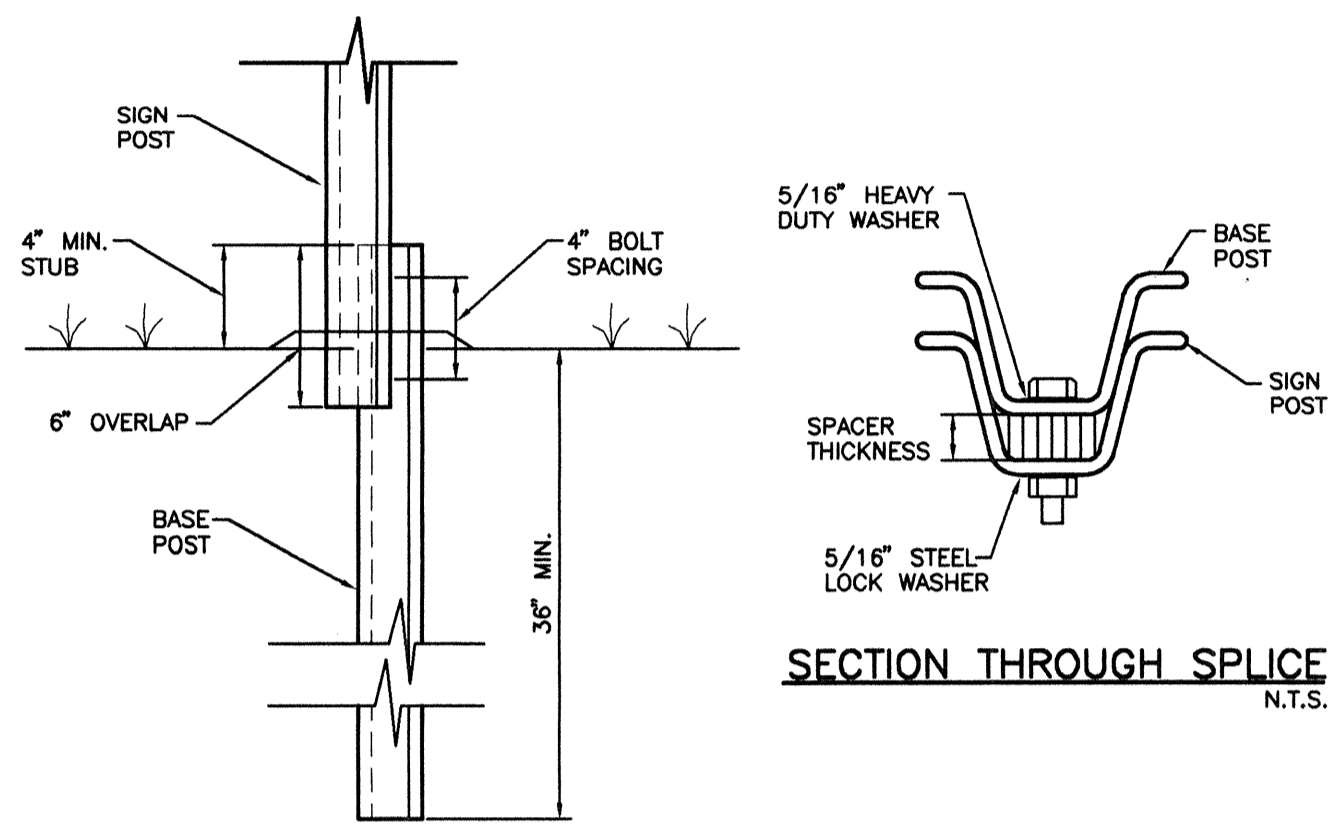
**FDOT TYPE "F" CURB**  
S-P005 N.T.S.



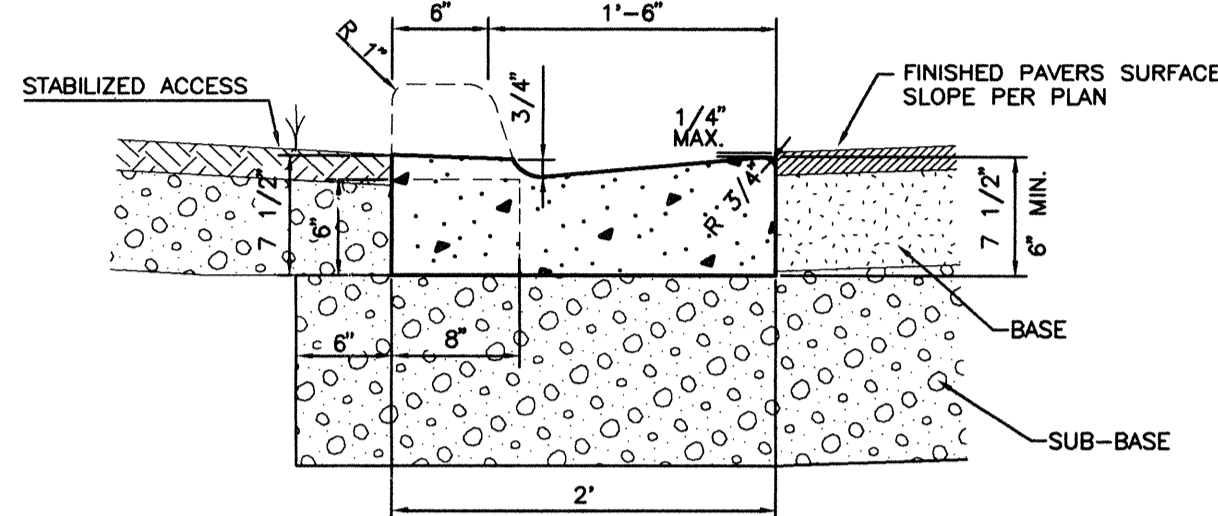
**FULL DEPTH PAVEMENT DETAIL (WITHIN FDOT RIGHT-OF-WAY)**  
N.T.S.



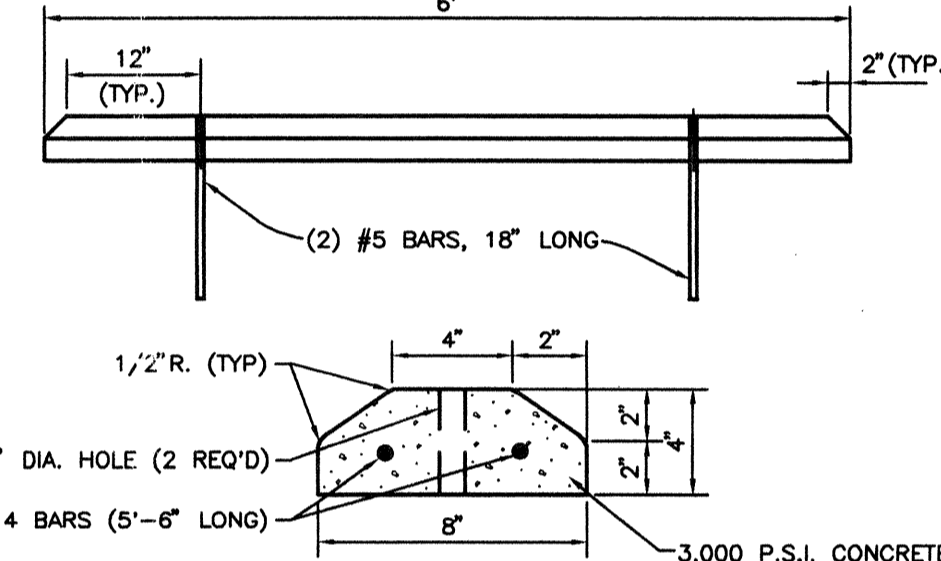
**PAVER SECTION**  
N.T.S.



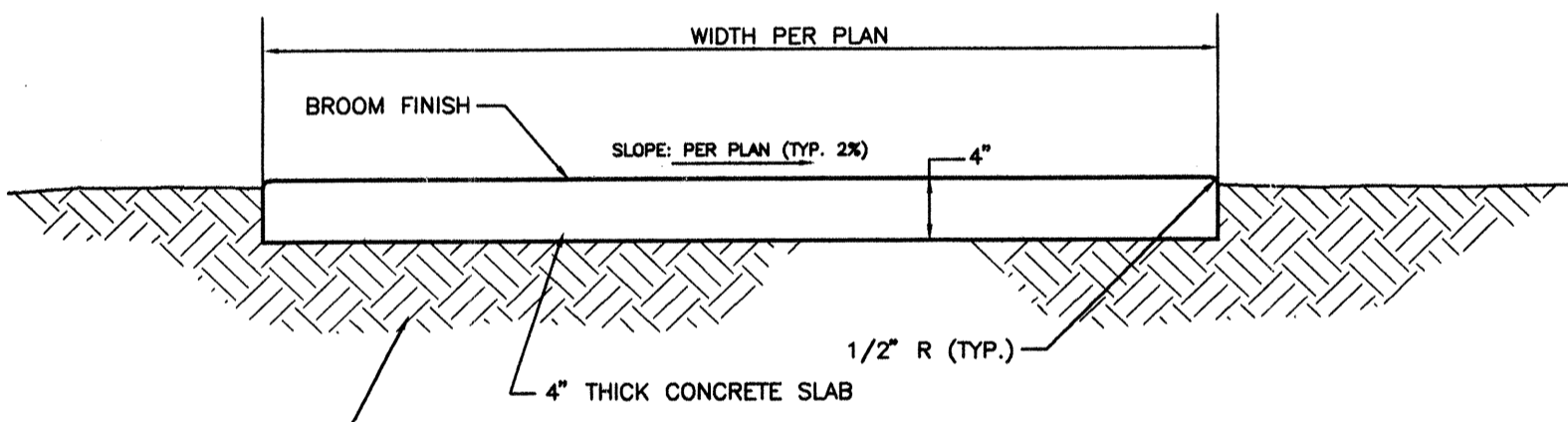
**SIGN POST BREAKAWAY DETAIL**  
S-P027 N.T.S.



**TYPE "F" DROP CURB**  
S-P057 N.T.S.



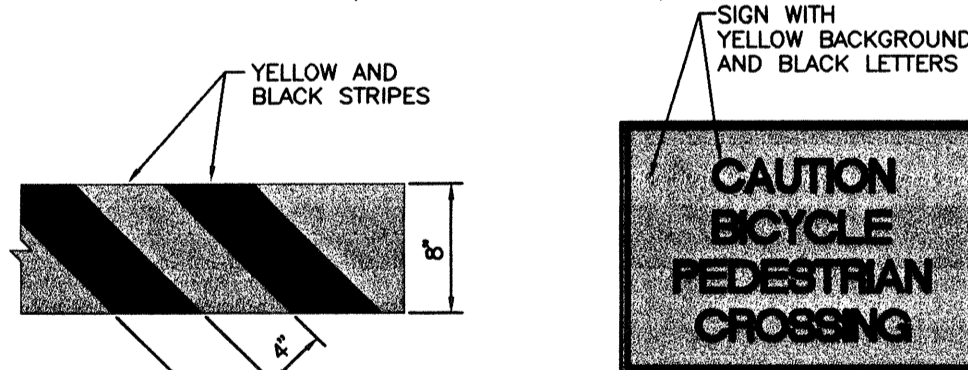
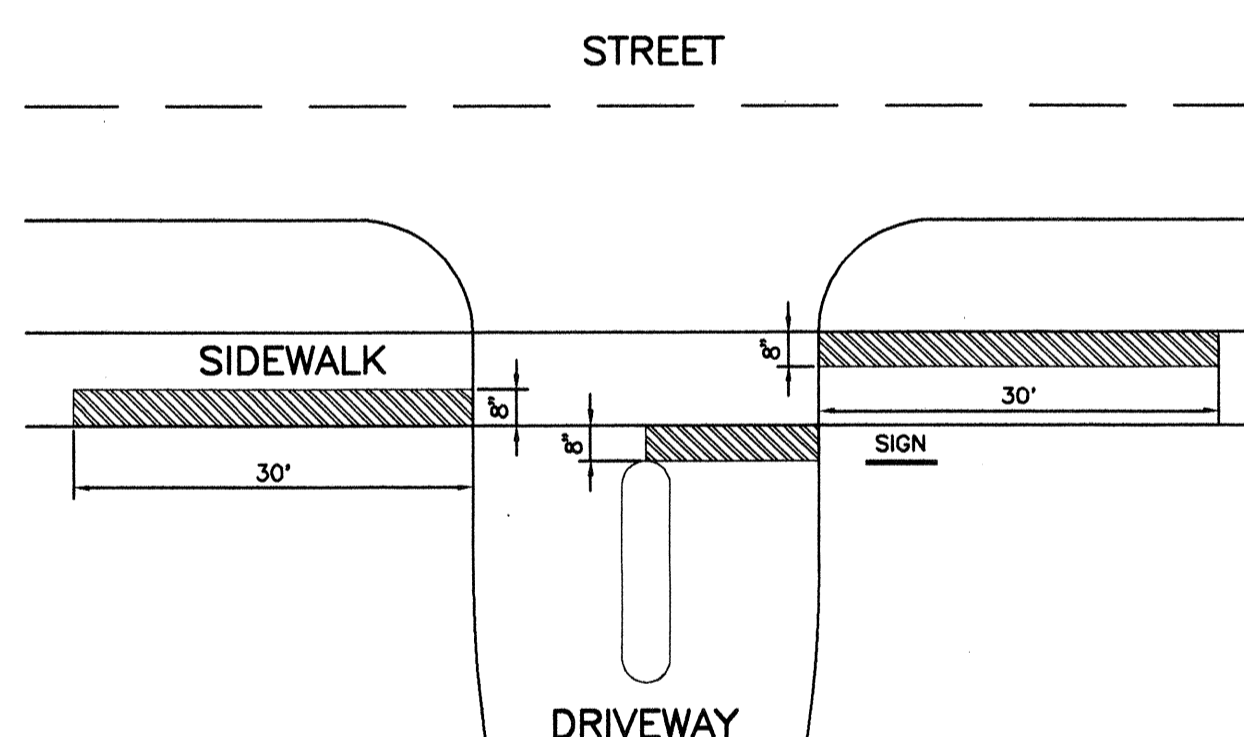
**PRECAST CONCRETE WHEEL STOP**  
S-P029 N.T.S.



**SIDEWALK NOTES:**

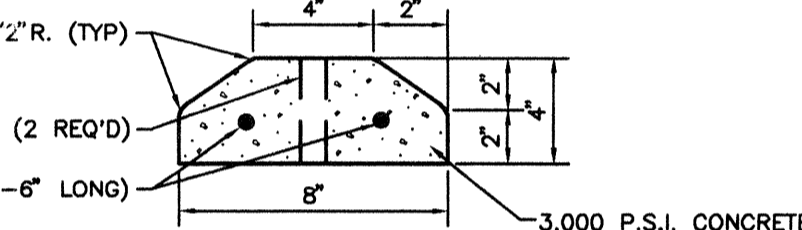
1. CONCRETE SHALL HAVE A COMPRESSIVE STRENGTH OF 3000 P.S.I. IN 28 DAYS WITH 6x6 #10 W.W. MESH UNLESS OTHERWISE NOTED.
2. CONTRACTION JOINTS SHALL BE SAW CUT TO A 1 1/2" DEPTH AT INTERVALS EQUAL TO THE WIDTH OF THE SIDEWALK.
3. AN EXPANSION JOINT WILL BE PLACED AT THE END OF ALL RETURNS, AT FIXED OBJECTS (DRIVEWAYS, CURBS ETC.) AND INTERVALS NOT TO EXCEED 50'. EXPANSION JOINTS SHALL BE CONSTRUCTED WITH 1/2" PREFORMED JOINT FILLER.
4. ALL SIDEWALKS AND SIDEWALK CROSSING SHALL BE CONSTRUCTED IN ACCORDANCE WITH THE AMERICANS WITH DISABILITIES ACT (ADA).

**TYPICAL SIDEWALK DETAIL**  
N.T.S.

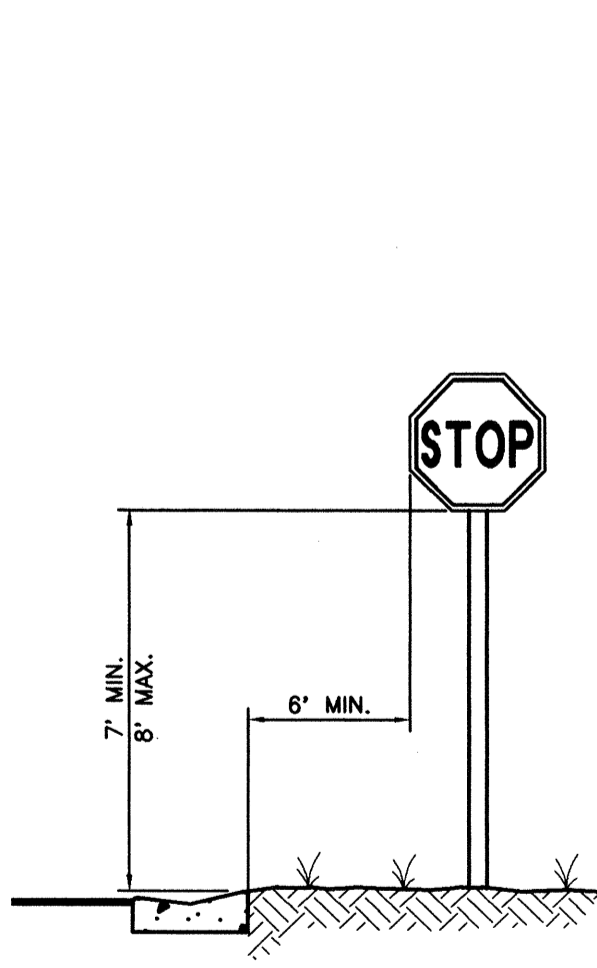


1. BAR-TYPE STRIPING SHALL BE PLACED ALONG THE EDGE OF THE SIDEWALK, CROSSING THE ROADWAY AND CONTINUING 30 FEET IN EACH DIRECTION.
2. BIKE-CROSSING WARNING SIGNS SHALL BE PLACED AT THE APPROACH OF INTERSECTION OF THE DRIVEWAY AND SIDEWALK.
3. STRIPING AND SIGNAGE SHALL BE INSTALLED BY THE TOWN PUBLIC WORKS DEPARTMENT OR SUBCONTRACTOR RETAINED BY THE PUBLIC WORKS DEPARTMENT, WITH THE TOTAL COST TO BE REIMBURSED BY THE APPLICANT.
4. IMPROVEMENTS PER THIS DETAIL SHALL BE INSTALLED PRIOR TO ISSUANCE OF ANY CERTIFICATE OF OCCUPANCY OR TEMPORARY C.O.

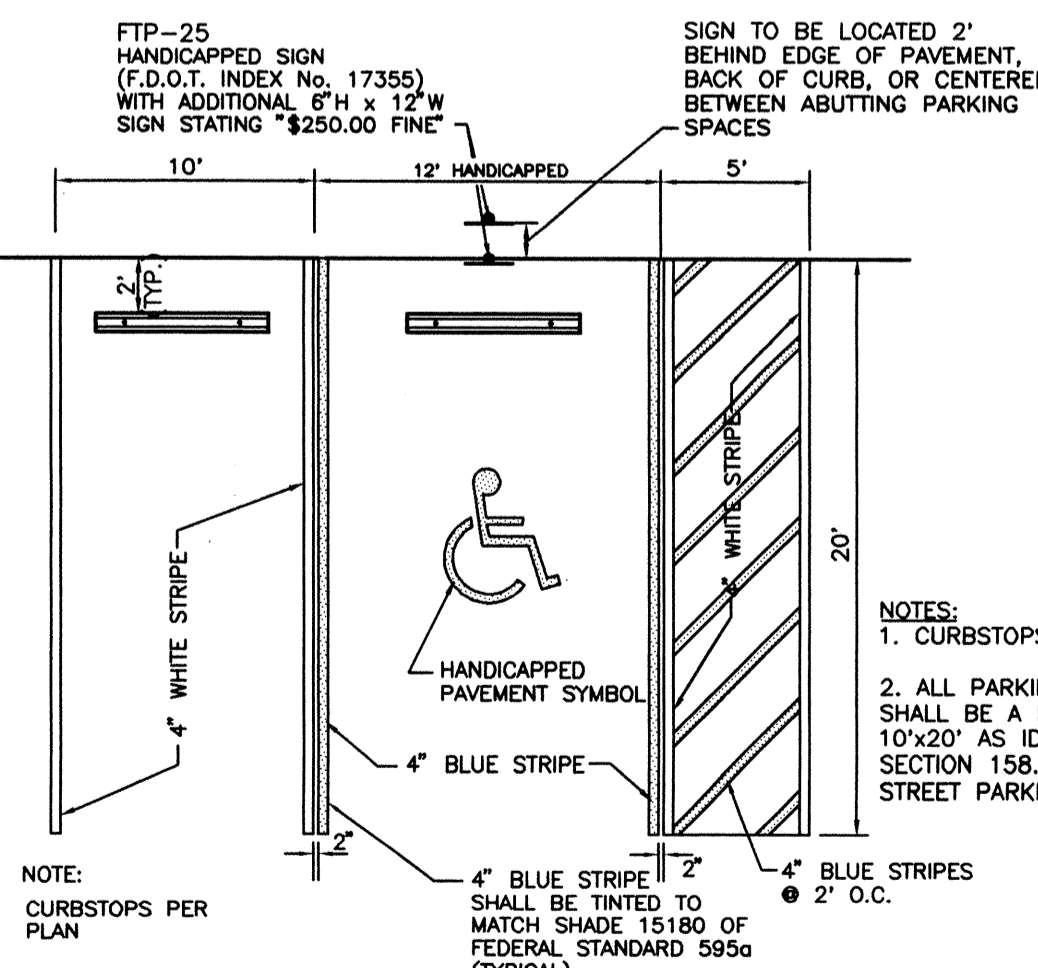
**SIDEWALK STRIPING AND SIGNAGE DETAIL**  
N.T.S.



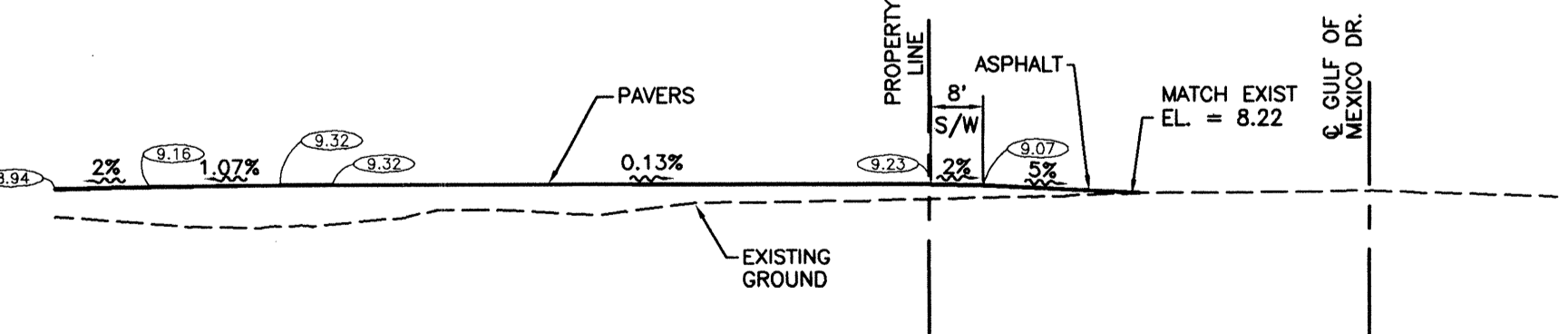
**STOP SIGN LOCATION DETAIL**  
S-P020 N.T.S.



**TYPICAL SIGN DETAIL**  
N.T.S.



**TYPICAL PARKING SPACE**  
S-P025 N.T.S.



**ENTRANCE DRIVEWAY PROFILE**  
N.T.S.

- GENERAL SITE CONSTRUCTION NOTES:**
1. THERE SHALL BE NO CHANGE OR DEVIATION FROM THESE PLANS WITHOUT PRIOR APPROVAL BY THE ENGINEER.
  2. ALL CLEARING AND GRUBBING DEBRIS IS TO BE REMOVED FROM SITE AND IS PART OF THE CLEARING AND GRUBBING ITEM.
  3. ALL PROPOSED GROUND ELEVATIONS ARE FINISHED SOD ELEVATIONS. FINISH EARTHWORK GRADING SHALL BE 0.2 FEET BELOW ELEVATIONS SHOWN TO ALLOW FOR SOD THICKNESS.
  4. SODDING INCLUDES MAINTAINING SLOPES AND SOD UNTIL COMPLETION AND ACCEPTANCE OF TOTAL PROJECT OR GROWTH IS ESTABLISHED, WHICHEVER COMES LAST. UNTIL THEN, ALL EROSION, SILTATION, AND MAINTENANCE OF GRADES AND GRASS IS THE RESPONSIBILITY OF THE CONTRACTOR.
  5. CERTAIN TREES ARE DESIGNATED BY THE OWNER TO BE SAVED AND PROTECTED BY THE CONTRACTOR. IT IS ASSUMED THESE TREES ARE HEALTHY AND ARE EXPECTED TO BE PART OF THE LANDSCAPE DEVELOPMENT. THEREFORE, IF ANY TREE(S) ARE DAMAGED BY CONSTRUCTION OPERATIONS OR BY OTHER MEANS (EXCLUDING LIGHTNING, WINDSTORM AND OTHER ACTS OF GOD) PERISHES WITHIN THE CONSTRUCTION PERIOD, IT SHALL BE THE RESPONSIBILITY OF THE CONTRACTOR TO REMOVE AND DISPOSE OF THOSE TREES. NO ADDITIONAL COMPENSATION SHALL BE MADE BY THE OWNER FOR THE LABOR, MATERIAL, OR MACHINERY REQUIRED TO REMOVE SAID TREE(S).
  6. WHERE EXCAVATIONS ARE IN CLOSE PROXIMITY OF TREES, THE CONTRACTOR SHALL USE EXTREME CARE IN NOT DAMAGING THE ROOT SYSTEM. NO EQUIPMENT, SUPPLIES, OR VEHICLES SHALL BE STORED OR PARKED WITHIN THE DRIP LINE OF TREES TO REMAIN AND BE PRESERVED. IT SHALL BE THE RESPONSIBILITY OF THE CONTRACTOR TO INFORM ALL OF HIS EMPLOYEES AND SUBCONTRACTORS OF THIS REQUIREMENT AND TO ENFORCE SAME.
  7. NOTIFY SUNSHINE ONE CALL (1-800-432-4770), THE TOWN OF LONGBOAT KEY PUBLIC WORKS DEPARTMENT, FLORIDA POWER & LIGHT, PEACE RIVER ELECTRIC, GENERAL TELEPHONE COMPANY AND ANY OTHER UTILITIES (GAS COMPANIES, CABLE T.V., ETC.) PRIOR TO CONSTRUCTION OPERATION AND PRIOR TO ANY CONNECTION TO EXISTING UTILITIES. IT IS THE CONTRACTOR'S RESPONSIBILITY TO PROTECT EXISTING UTILITIES FROM DAMAGE.
  8. ALL UTILITY LINES, STORM DRAIN LINES AND ACCESSORIES SUCH AS, BUT NOT LIMITED TO, MANHOLES, CLEANOUTS, SEWER AND WATER SERVICES, VALVES, FIRE HYDRANTS AND INLETS SHALL BE CONSTRUCTED TO ALIGNMENT AND LOCATIONS SHOWN ON PLANS UNLESS OTHERWISE DIRECTED BY THE ENGINEER.
  9. CLEARING, GRUBBING, STRIPPING, AND COMPACTION SHALL BE INSPECTED BY THE ENGINEER OR HIS DULY APPOINTED REPRESENTATIVE PRIOR TO FILLING.
  10. PRIOR TO THE START OF CONSTRUCTION ACTIVITIES, PRESERVE AREAS WITHIN AND ADJOINING THE AREA OF CONSTRUCTION ACTIVITY SHALL BE PROTECTED BY ERECTION OF TREE PROTECTION BARRICADES AND/OR SILT BARRIERS. SILT BARRIERS SHALL BE CONSTRUCTED IN ACCORDANCE WITH THE BEST MANAGEMENT PRACTICES DETAIL DRAWING. THE CONTRACTOR IS RESPONSIBLE TO OBTAIN ANY REQUIRED TREE REMOVAL PERMIT FROM THE TOWN OF LONGBOAT KEY.
  11. ALL DISTURBED AREAS ARE TO BE SODDED AS SOON AS PRACTICAL TO PREVENT EROSION.
  12. ALL PROVISIONS IN THE BEST MANAGEMENT PRACTICES PLAN SHALL BE ADHERED TO.
  13. THE CONTRACTOR SHALL ADHERE TO AND HAVE A COPY OF THE D.E.P. PERMIT FOR THE PROJECT ON SITE.
  14. ALL ELLIPTICAL CONCRETE PIPE AND ALL ROUND CONCRETE PIPE IN R/W SHALL HAVE A FILTER FABRIC JACKET MINIMUM 12" EACH SIDE OF JOINT WITH MINIMUM 2" OVERLAP AT SEAM PER FDOT INDEX #280 & #199.
  15. ALL PAVEMENT STRIPING AND SIGNAGE WITHIN THE FDOT RIGHT-OF-WAY SHALL BE IN ACCORDANCE WITH FDOT STANDARD INDEX NO. 17346 AND NO. 17352.
  16. ALL UTILITIES SHALL BE LOCATED UNDERGROUND.
  17. PARKING OF CONSTRUCTION-RELATED VEHICLES SHALL BE PROHIBITED ALONG GULF OF MEXICO DRIVE.

<b>WilsonMiller</b> <small>Planners - Engineers - Ecologists - Surveyors - Landscape Architects - Transportation Consultants</small> Naples Fort Myers Sarasota Bradenton Tampa 6800 Professional Parkway East, Suite 100 - Sarasota, Florida 34240-9444 - Phone 941-907-6900 - Fax 941-907-6900 - Web Site www.wilsonmiller.com		CLIENT: LAURELTON MERRICK CORPORATION PROJECT: EN PROVENCE	DATE: 4/00 HORIZONTAL SCALE: AS SHOWN VERTICAL SCALE: AS SHOWN SHEET: TWP - RBE 17 36S 17E	TITLE: PAVING DETAILS PROJECT NUMBER: 03317-000-000-FLPCP SHEET NUMBER: 8 OF 12
B ADD FULL DEPTH PAVEMENT SECTION A REVISE PER TOWN OF LONGBOAT KEY AND F.D.O.T. COMMENTS	6/27/00 DKL/1239 6/7/00 DKL/1239	ACTIVITY INITIALS/EMP. NO. DATE DESIGNED BY: KAW/1200 4/00 DRAWN BY: MAK/1292 4/00 CHECKED BY: CONTRACT ADMIN. BY: WM APPROVED BY:	MILLARD J. BAKER, P.E. FLORIDA CERTIFICATE NO. 33766 INDEX NUMBER: D-03317-000-000027 CROSS REFERENCE FILE NO.: PROJECT NUMBER: 03317-000-000-FLPCP SHEET NUMBER: 8 OF 12	