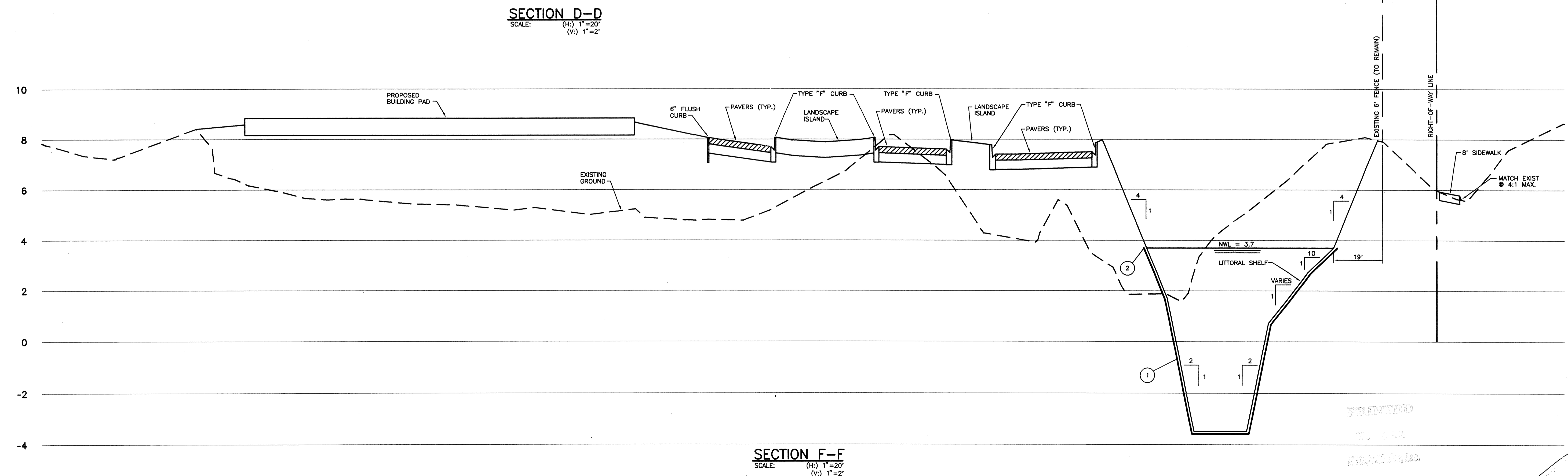
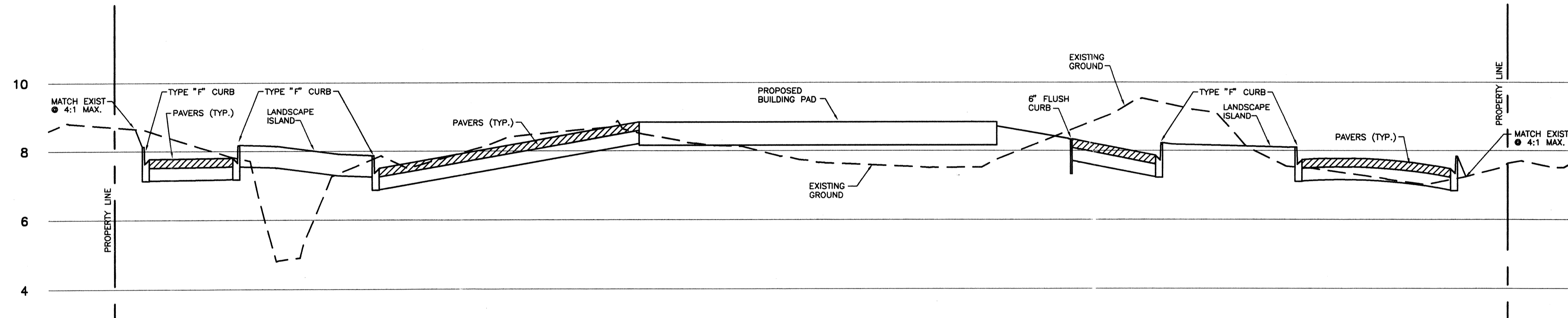
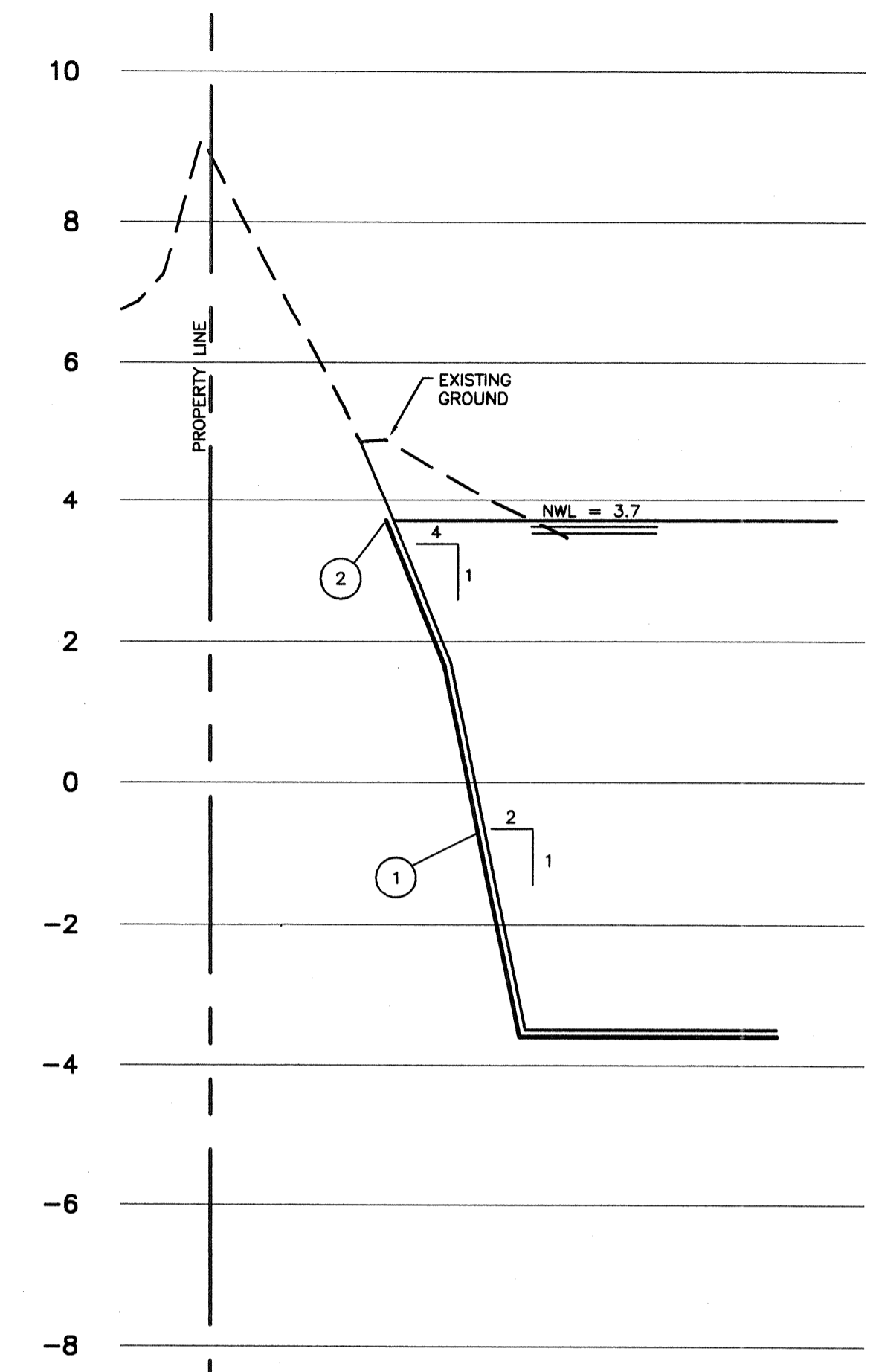
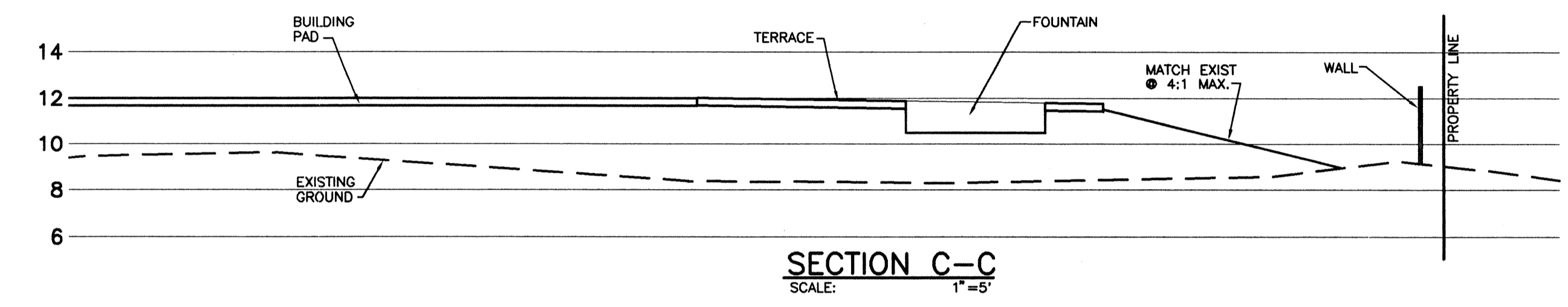
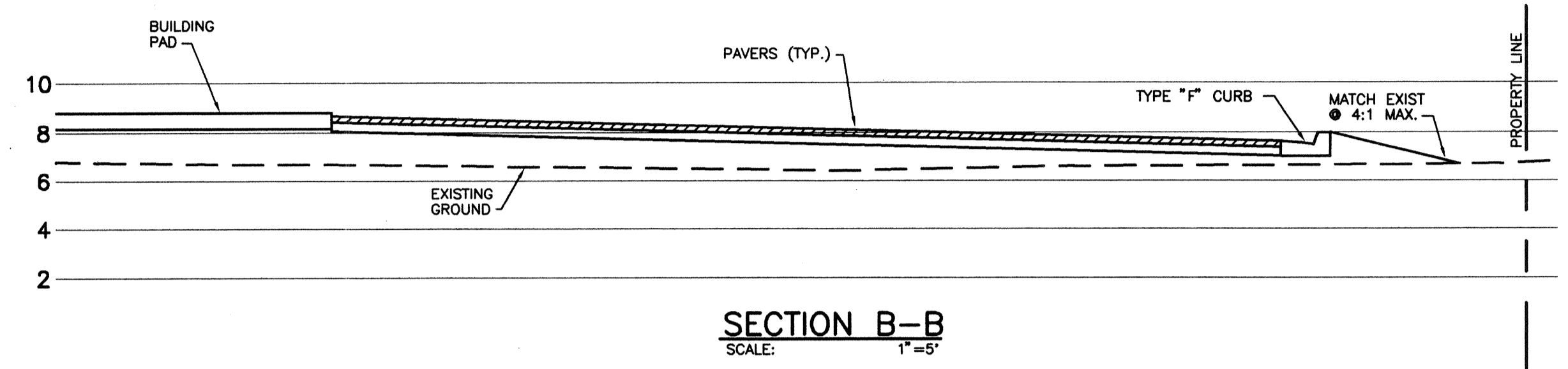


- POND NOTES**
- ① LINE POND WITH 30 MIL PVC LINER CONSTRUCTED IN ACCORDANCE WITH THE MANUFACTURE'S RECOMMENDATIONS. SEAMS SHALL BE WATERPROOF.
 - ② TERMINATE POND LINER AT NORMAL WATER ELEVATION.



| REV. NO. | REVISION | DATE | DRAWN BY / EMP. NO. | CHECKED BY / EMP. NO. | WM APPROVED BY: |
|----------|----------|------|---------------------|-----------------------|-----------------|
| | | | | | |
| | | | | | |

WilsonMiller
Planners - Engineers - Ecologists - Surveyors - Landscape Architects - Transportation Consultants
Naples Fort Myers Sarasota Bradenton Tampa
6800 Professional Parkway East, Suite 200 - Sarasota, Florida 34240-6444 - Phone 941-907-6900 - Fax 941-907-6910 - Web Site www.wilsonmiller.com

CLIENT: LAURELTON MERRICK CORPORATION
PROJECT: EN PROVENCE
DATE: 4/00
HORIZONTAL SCALE: AS SHOWN
VERTICAL SCALE: AS SHOWN
SHEET: 17 OF 17E

TITLE: CROSS SECTIONS
PROJECT NUMBER: 03317-000-000-FLFCP
SHEET NUMBER: 6 OF 12

PRINTED
12/6/2000