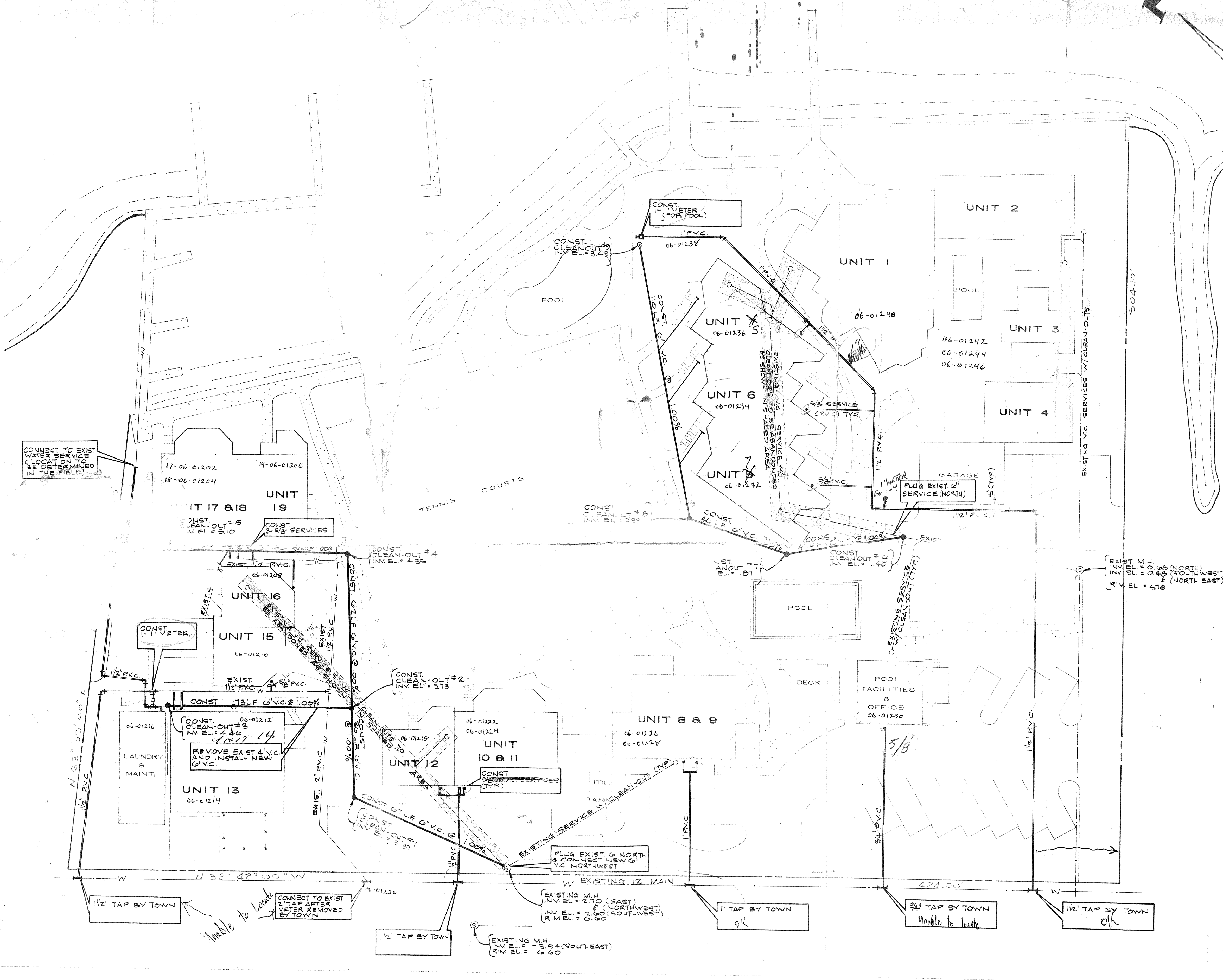
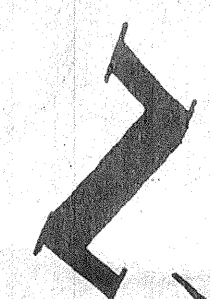
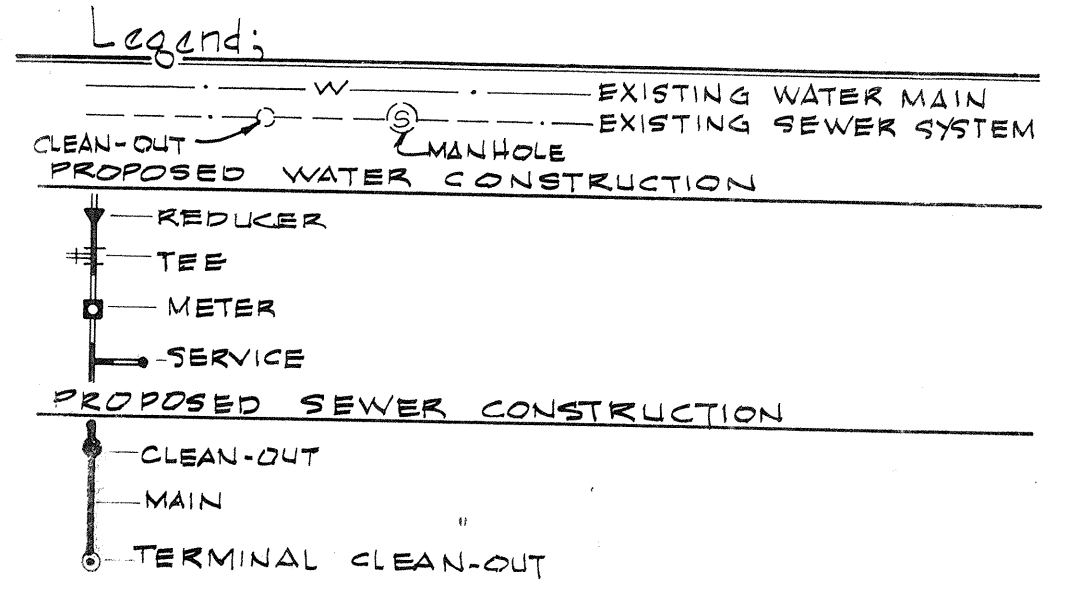


BUTTFLOOD BAYOU



NOTES:

- ALL EXISTING UTILITY LOCATIONS ARE APPROXIMATE, EXACT LOCATIONS MUST BE DETERMINED BY CONTRACTOR.
- LOCATION OF PROPOSED UTILITIES ARE APPROXIMATE ONLY AND MAY BE ADJUSTED TO AVOID CONFLICTS.
- ALL MATERIAL AND CONSTRUCTION TO MEET ALL APPLICABLE LOCAL CODES. TYPICAL SERVICES TO BE CONSTRUCTED WITH 6"x4" WYE.
- ALL METERS TO BE 5/8" x 3/4" (UNLESS OTHERWISE NOTED) AND PROVIDED BY TOWN OF LONGBOAT KEY.
- UPON COMPLETION OF UTILITY INSTALLATION CONTRACTOR SHALL SUBMIT TO THE ENGINEER OF RECORD TO THE OWNER AND TO THE TOWN OF LONGBOAT KEY, A CERTIFIED (BY REGISTERED PROFESSIONAL ENGINEER OR SURVEYOR) "AS-BUILT" THESE AS-BUILTS SHALL BE ACCORDING TO THE DATA FOR SEWERS) DATA SHALL BE OBTAINED BY PINS IN AN OPEN SERVICE TRENCH.



WATER DISTRIBUTION SYSTEM AND SEWAGE COLLECTION SYSTEM

FOR **DOCK ON THE BAY**

A CONDOMINIUM

IN

SEC. 6, TWP. 36S., RGE. 17 E. SARASOTA COUNTY, FLORIDA

GULF OF MEXICO DRIVE

S.R. 789

REVISED

- _____
- _____
- _____
- _____

Zoller & Najjar Engineering, Inc
 Engineers, Planners, and Land Surveyors

201 5TH AVENUE DRIVE EAST
 WEST OVERSE BOX 448

DESIGNED BY: _____ CHECKED BY: _____
 DRAWN BY: _____ COMPUTED BY: _____

NOVEMBER 1980

1"=20'