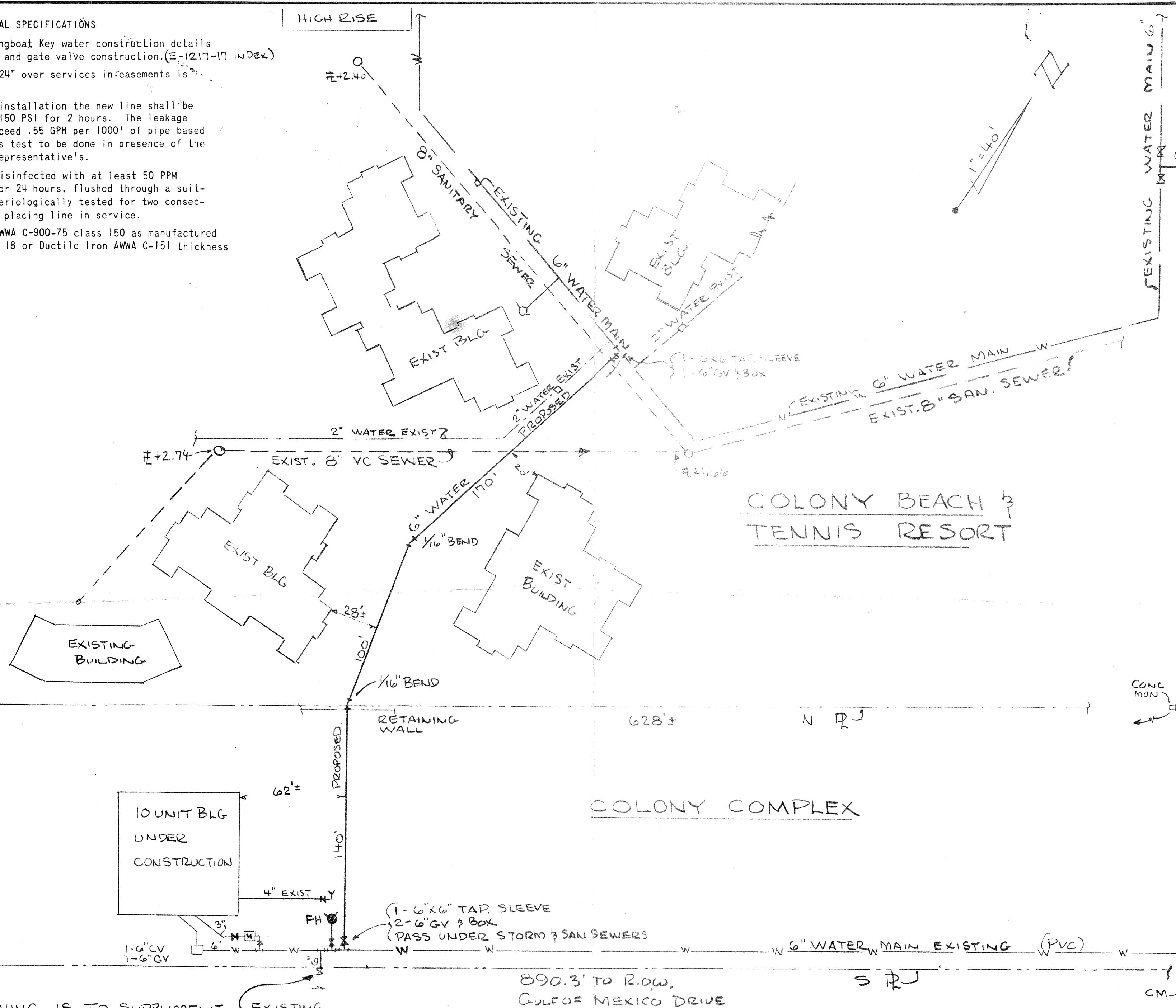


GENERAL SPECIFICATIONS

1. Refer to Town of Longboat Key water construction details for blocking, cover and gate valve construction. (E-1217-17 INDEX)
2. A minimum cover of 24" over services in easements is required.
3. Upon completion of installation the new line shall be pressure tested to 150 PSI for 2 hours. The leakage limits shall not exceed .55 GPH per 1000' of pipe based on 18' joints. This test to be done in presence of the Town and Engineer representative's.
4. The line shall be disinfected with at least 50 PPM chlorine residual for 24 hours, flushed through a suitable tap, then bacteriologically tested for two consecutive days prior to placing line in service.
5. Pipe shall be PVC AWWA C-900-75 class 150 as manufactured by J. Mansfield SDR 18 or Ductile Iron AWWA C-151 thickness class 2.



APPROX. MHW LINE

NOTES:

- ① THIS DRAWING IS TO SUPPLEMENT DWG G-697-11 DATED AUGUST 77 UNDER D.E.R. APPROVAL No. WD-58-12540-J DATED NOV. 9, 1976.
- ② COLONY BEACH & TENNIS RESORT WILL FURNISH A 20' WIDE EASEMENT FOR INSTALLATION & MAINTAINANCE.
- ③ LINES TO BUILDING FURNISHED FROM FIELD MEASUREMENTS JUNE 8, 1978 ON ARCHITECT'S DWG P-2.

XANADU PROJECT (NOW ABANDONED)

FOR: COLONY COMPLEX	DATE: 5 JUNE 78	DESIGNED BY: MW
6" WATER INTERCONNECTION FROM COLONY COMPLEX TO COLONY BEACH & TENNIS	SCALE: 1" = 40'	CHECKED BY: MW
	PROJECT NO. 1802-2	APPROVED BY: M. WELLFORD #5367
SHEET NUMBER 1		
REVISION		

SMALLY, WELLFORD & NALVEN - CONSULTING ENGINEERS - SARASOTA, FLA. INDEX NO. C 1802-4