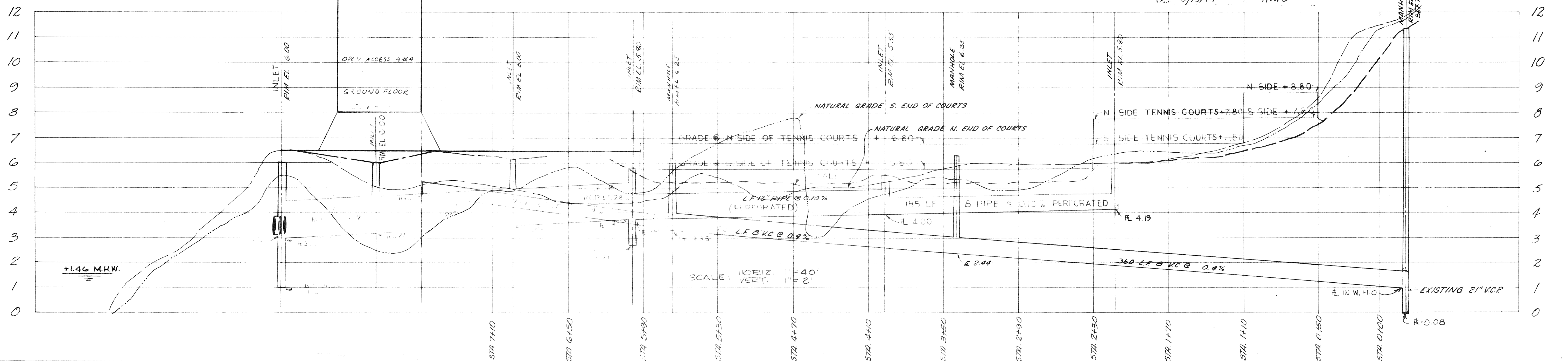
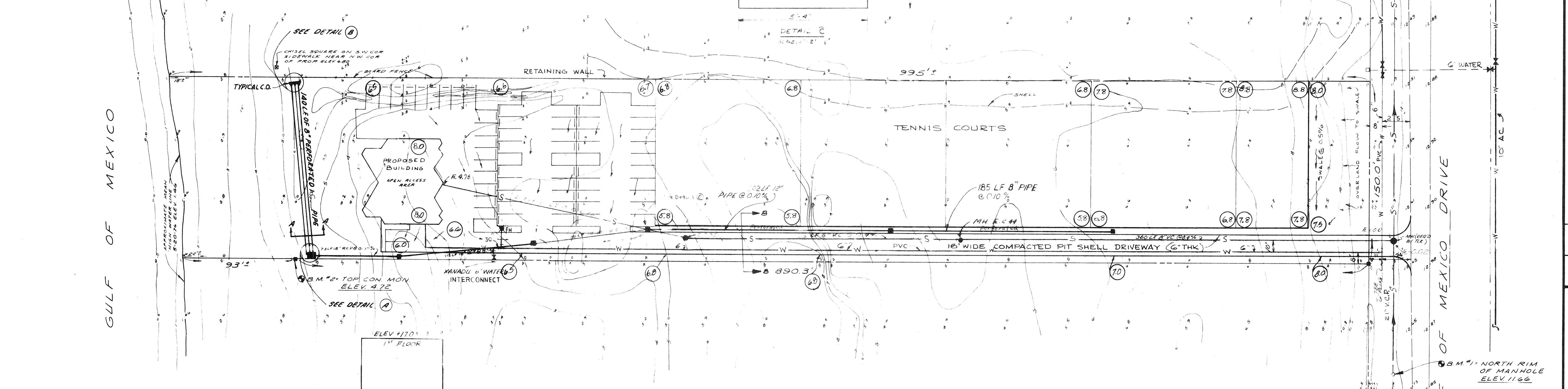
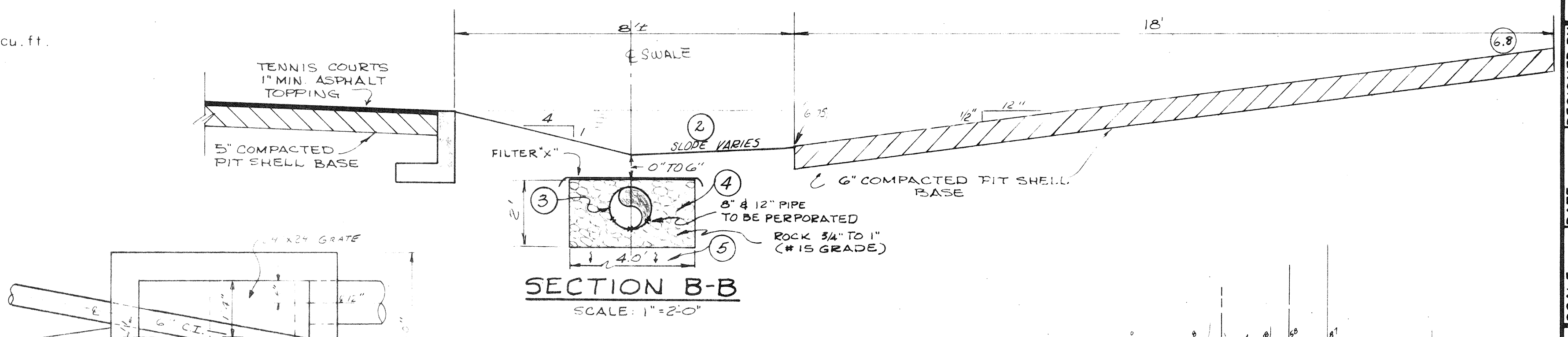
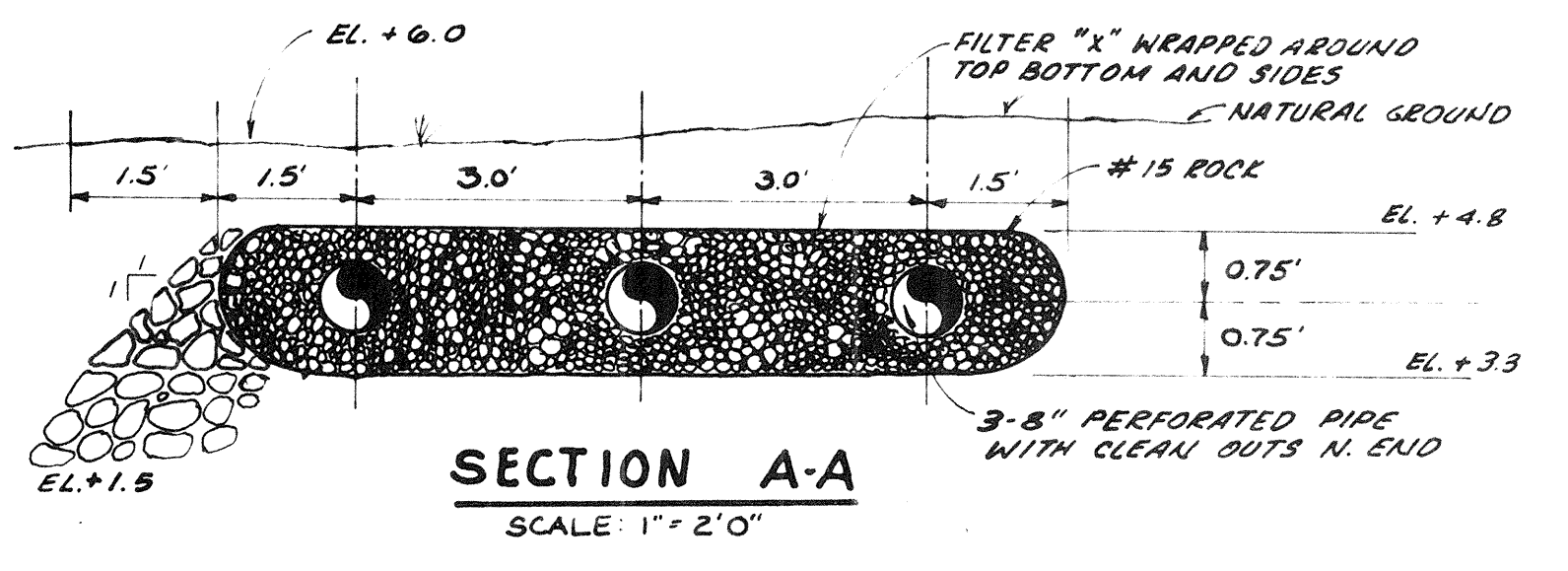


- ATTENUATION OF RUNOFF COMPUTATION
(SEE TYPICAL SECTION B-B)
- Volume required to store first 1" of rain 150' x 900' x 1/12" = 11,250 cu. ft. required.
 - Storage in swale 8' 1/2' x 1' x 700 LF = 2800 cu. ft.
 - Storage in 12" ϕ culvert .78 sq. in. inside: 113/144 x 700 LF = 546 cu. ft.
 - Storage in 2' x 4' rock trench: (2'x4') - (.78 sq. ft.) x 700 LF x .30 voids = 7.22 sq. ft. x 700 LF x .30 = 1516 cu. ft.
 - Percolation rate: 30"/hr bottom of 4' trench 4' x 30" / 12" x 700 LF = 7000 cu. ft.
 - Sum of (2)+(3)+(4)+(5) = 12,300 cu. ft. available.
 - Size outfall for 6.0 CFS select 18" .4% grade.



APPROVED BY	DESIGNED BY	DATE	SCALE	BY	REVISION	DATE	LTR.
M.W.	M.W.	6-14-76	1"=40'	AMG	ADD SECTION A-A, REVISE SECTION B-B TO SHOW SWALE IN EAST SIDE OF COURTS AND INTERCONNECT AND ADD SWALE IN SYSTEM INLET. I-177	7-18-76	A
CHECKED BY PROJECT NO	DRAWN BY	1802		AMG	I-177	8-25-76	B
				AMG	ADD SWALE TO CALCULATED WHERE EXISTING MANHOLE	10-1-76	C
				AMG	ADD SWALE TO CALCULATED WHERE EXISTING MANHOLE	10-1-76	D
				AMG	ADD SWALE TO CALCULATED WHERE EXISTING MANHOLE	10-1-76	E
				AMG	ADD SWALE TO CALCULATED WHERE EXISTING MANHOLE	10-1-76	F
				AMG	ADD SWALE TO CALCULATED WHERE EXISTING MANHOLE	10-1-76	G

FOR: MR. JAMES B. HOLLIDAY
GRADING & DRAINAGE PLAN - COLONY COMPLEX
 LONGBOAT KEY, FLORIDA
SMALLY, WELLFORD & NALVEN - CONSULTING ENGINEERS - SARASOTA, FLORIDA

DRAWING NUMBER: G-1802-2
 REVISION: G
 INDEX NO. G-1802-2