

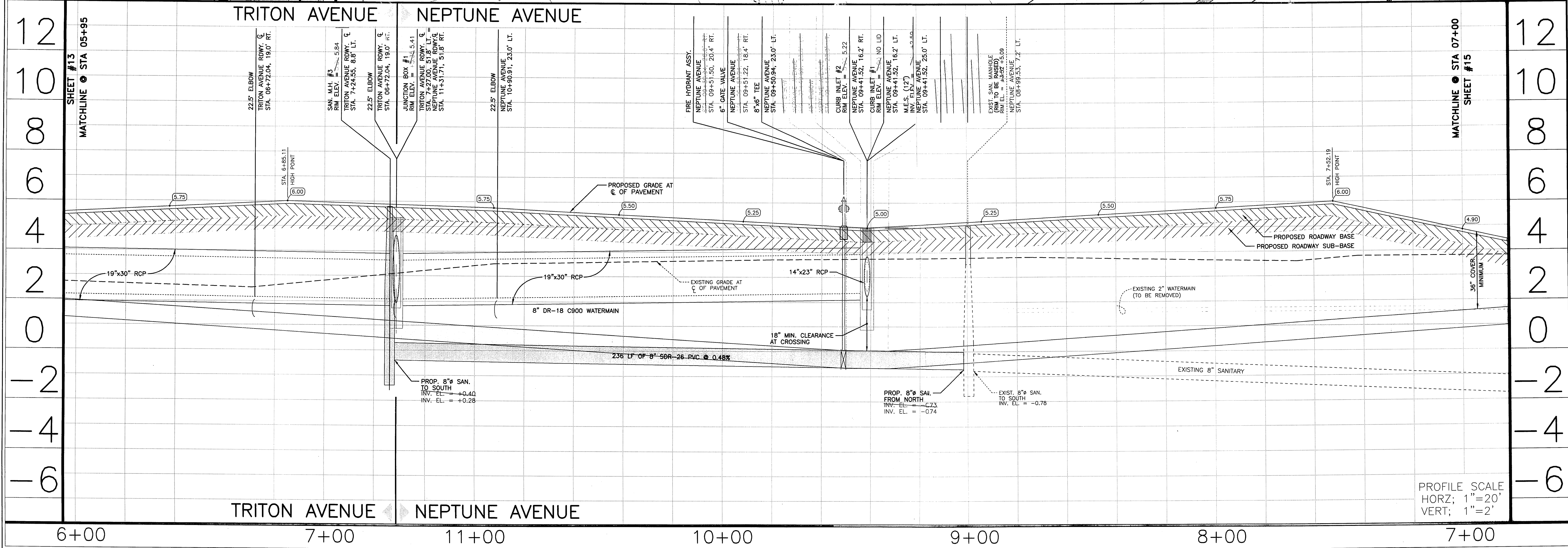
SANITARY SEWER AS-BUILTS		
TRITON AVENUE		
ITEM	STATION	OFFSET
4. DOUBLE SAN. SERVICE LT.	36+79.24	34.8' LT.
NEPTUNE AVENUE		
ITEM	STATION	OFFSET
6. DOUBLE SAN. SERVICE RT.	8+92.42	28.8' RT.
7. DOUBLE SAN. SERVICE LT.	8+97.78	30.1' LT.
8. DOUBLE SAN. SERVICE RT.	3+40.67	30.4' RT.

POTABLE WATER AS-BUILTS		
TRITON AVENUE		
ITEM	STATION	OFFSET
4. METER BOX RT.	05+79.46	28.6' RT.
5. METER BOX LT.	07+15.03	55.8' LT.
NEPTUNE AVENUE		
ITEM	STATION	OFFSET
7. METER BOX RT.	07+49.39	28.7' RT.
8. METER BOX RT.	08+88.70	29.5' LT.
9. DOUBLE METER BOX RT.	09+39.96	28.4' RT.
10. METER BOX LT.	09+56.43	30.3' LT.
11. METER BOX RT.	11+15.86	45.5' RT.

**CYRIX ENGINEERING, INC.**  
 Engineers & Surveyors  
 1144 Tallevast Rd., #111  
 Sarasota, Fla 34243

PROJECT NO.	043394	DRAWN BY	2008
CHECKED BY	J.M.P.	DATE	12 APRIL 2004
REVISIONS		DATE	15 JUN 04
		BY	J.M.P.
		DATE	25 JUL 04
		BY	J.M.P.
		DATE	
		BY	
		DATE	

SEAL:   
 J. Mark Privette PE, Fl. Reg.# 43394  
 Date



**COQUINA BEACH SUBDIVISION**

PLAN & PROFILE  
 NEPTUNE AVENUE ROADWAY C  
 STA. 7+00.00 TO STA. 11+31.71  
 TRITON AVENUE ROADWAY C  
 STA. 05+95.00 TO STA. 07+27.00

SHEET 14 OF 16