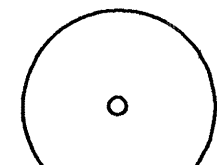



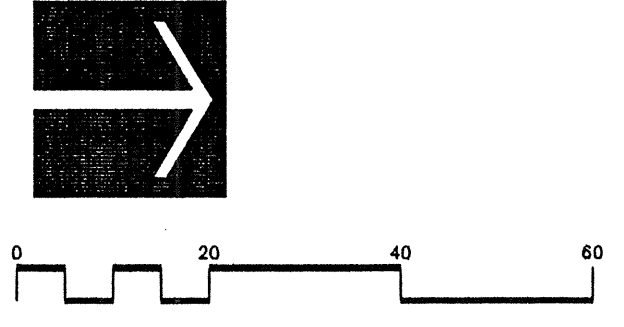


**TREE KEY**

-  EXISTING TREE TO REMAIN SIZE AS NOTED
-  EXISTING TREE OR VEGETATION TO BE REMOVED SIZE AS NOTED
-  EXISTING PALM TO BE TRANSPLANTED
-  TRANSPLANTED PALM (11 TOTAL)

NOTE: CONTRACTOR TO TRANSPLANT AS MANY PALMS AS SITE CONDITIONS MAY ALLOW.

CONTRACTOR SHALL FIELD VERIFY WITH LANDSCAPE ARCHITECT ALL LOCATIONS OF TRANSPLANTED PALMS PRIOR TO TRANSPLANTING.



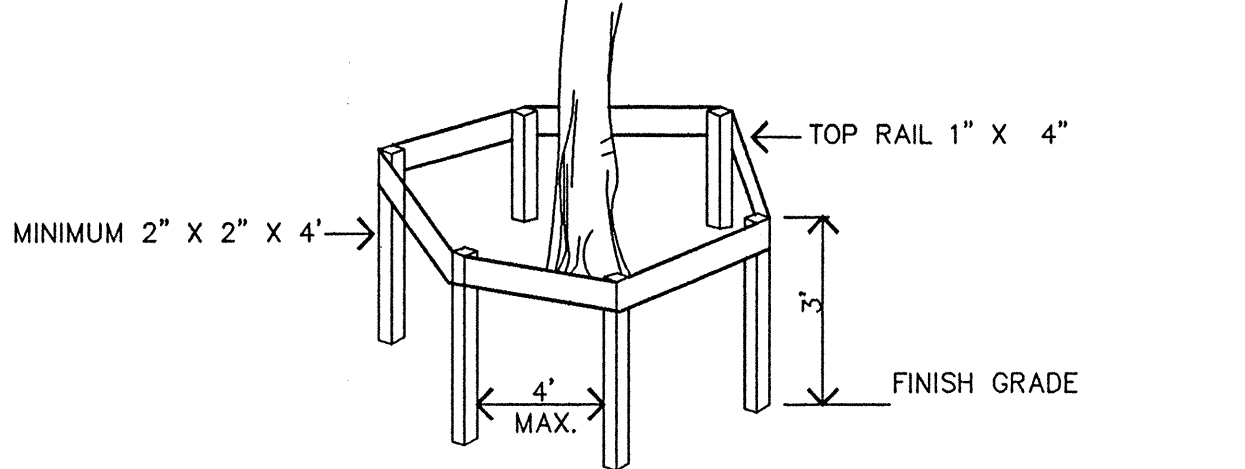
**TREE PROTECTIVE BARRIER**

**PROTECTIVE BARRIER REQUIREMENTS**

1. PROTECT ALL ABOVE GROUND PORTIONS OF TREES FROM MECHANICAL DAMAGE.
2. PROTECT SOIL NEAR TREE FROM COMPACTION.
3. PROVIDE PHYSICAL AND MENTAL AWARENESS OF THE PRESENCE OF TREES ON THE SITE TO CONSTRUCTION PERSONNEL.
4. HEAVY EQUIPMENT NOT ALLOWED INSIDE BARRIER; ONLY HAND LABOR.
5. CONSTRUCTION MATERIAL OR TEMPORARY SOIL DEPOSITS NOT ALLOWED INSIDE BARRIER AREA.

**PROTECTIVE BARRIER SPECIFICATIONS**

1. UPRIGHTS SPACED AT 4' INTERVALS OF NO LESS THAN 2" X 2" LUMBER WITH 1" X 4" TOP RAIL.
2. ALL BARRIERS TO BE ERECTED AROUND TREES TO BE PROTECTED BEFORE CONSTRUCTION OR CLEARING OF PROPERTY COMMENCES.
3. BARRIERS TO REMAIN IN PLACE UNTIL ALL PAVING, CONSTRUCTION AND HEAVY EQUIPMENT IS OUT OF AREA.
4. BARRICADES MUST BE PLACED A MINIMUM OF 6' OR HALF THE DRIPLINE FROM THE TRUNK WHICHEVER IS GREATER.



**TREE BARRIER DETAIL**

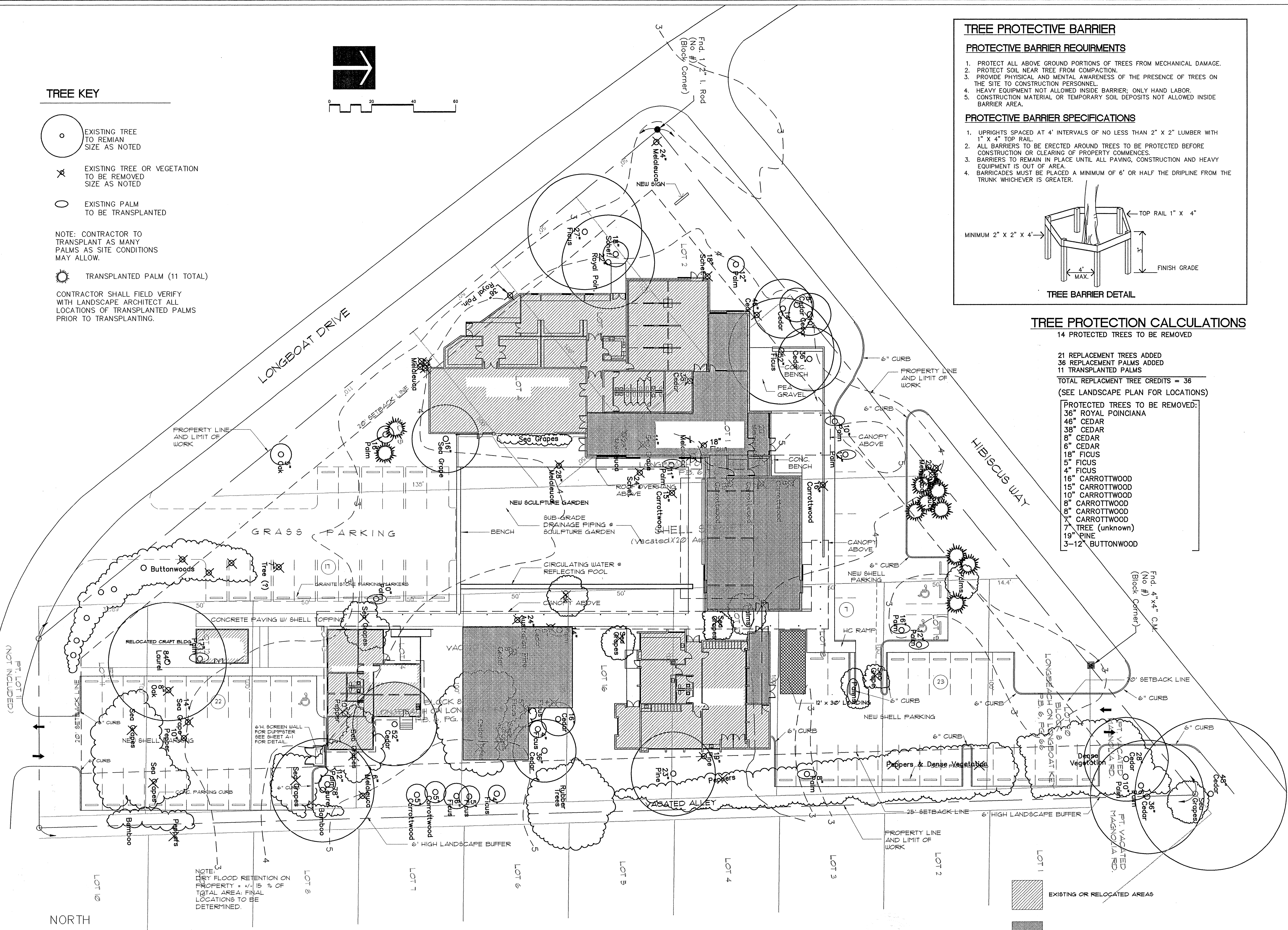
**TREE PROTECTION CALCULATIONS**

14 PROTECTED TREES TO BE REMOVED

21 REPLACEMENT TREES ADDED  
 36 REPLACEMENT PALMS ADDED  
 11 TRANSPLANTED PALMS

TOTAL REPLACEMENT TREE CREDITS = 36  
 (SEE LANDSCAPE PLAN FOR LOCATIONS)

- PROTECTED TREES TO BE REMOVED:**
- 36" ROYAL POINCIANA
  - 46" CEDAR
  - 38" CEDAR
  - 8" CEDAR
  - 6" CEDAR
  - 18" FICUS
  - 5" FICUS
  - 4" FICUS
  - 16" CARROTTWOOD
  - 15" CARROTTWOOD
  - 10" CARROTTWOOD
  - 8" CARROTTWOOD
  - 8" CARROTTWOOD
  - 7" CARROTTWOOD
  - 19" PINE
  - 3-12" BUTTONWOOD

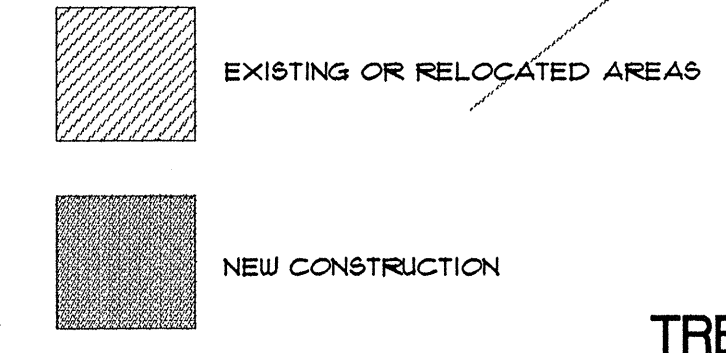


NORTH

NOTE: DRY FLOOD RETENTION ON PROPERTY = 4-15% OF TOTAL AREA; FINAL LOCATIONS TO BE DETERMINED.

BLOCK 8  
 LONGBEACH ON LONGBOAT KEY  
 P.B. & P.G. 66

PHILLIP J. SMITH, RLA #1096



REVISED 3/22/99 PER L.B.K.  
**TREE PROTECTION PLAN**

PROJECT NO.	99-10
SCALE	1"=20'-0"
DATE	3/15/99
DRAWN BY	MES
ISSUED	3/22/99