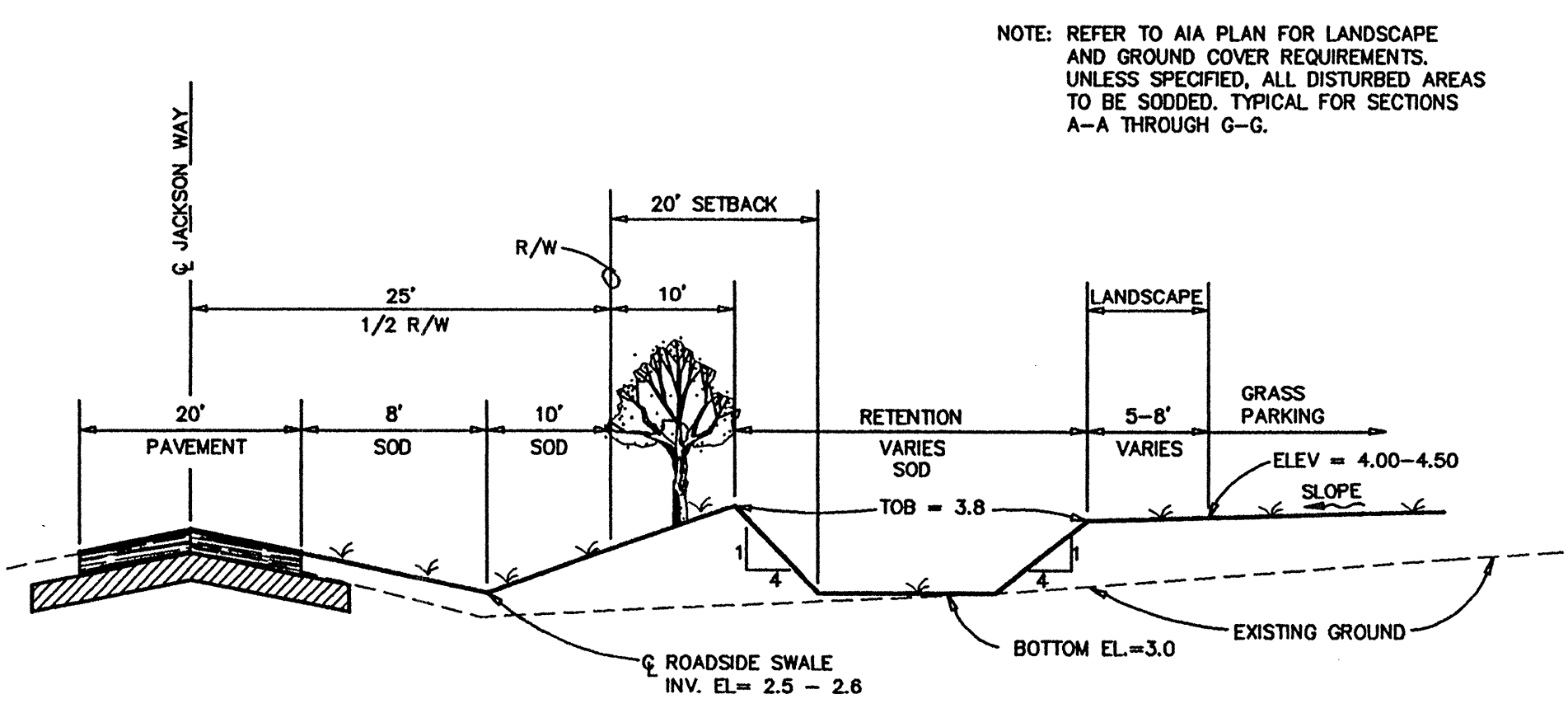
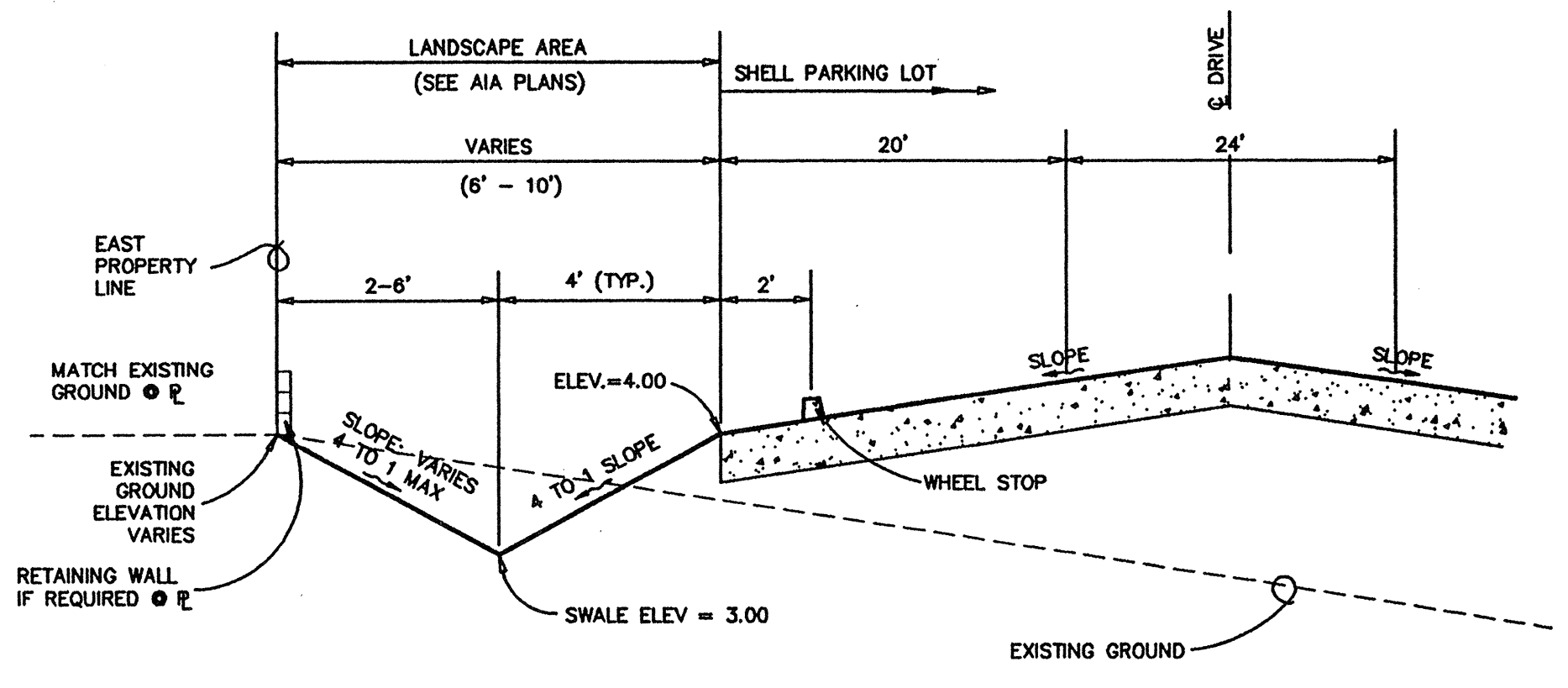


Copyright © 1999 Zoller, Najar & Shroyer, Inc. Plot date and time: 12/29/03 10:14:12 Sheet Title: GRADING DETAILS Job Number: 00-21424 CAD file name: W:\ACAD\Longboat Arts Long-461.dwg Sheet #: C-5 SP #: File Number: 13700



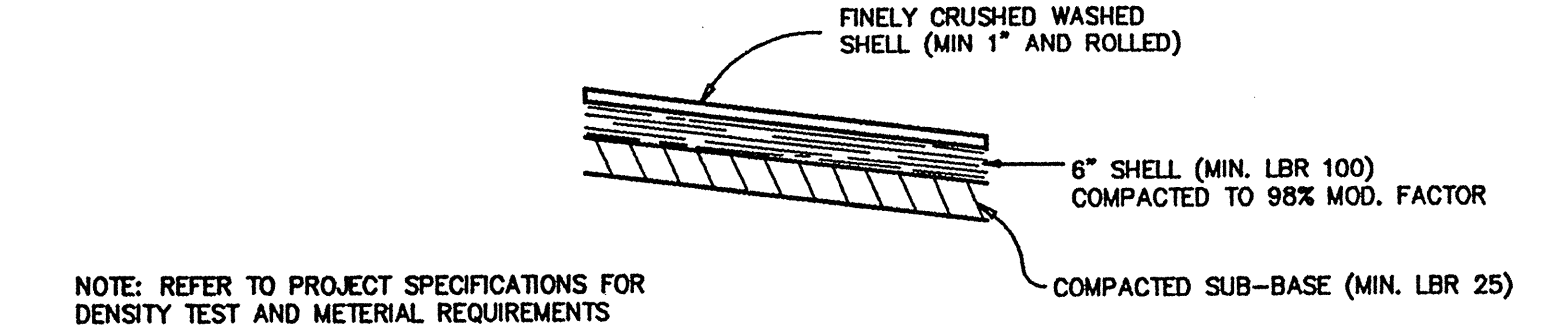
**SECTION A-A**  
N.T.S.

NOTE: REFER TO AIA PLAN FOR LANDSCAPE AND GROUND COVER REQUIREMENTS. UNLESS SPECIFIED, ALL DISTURBED AREAS TO BE SODDED. TYPICAL FOR SECTIONS A-A THROUGH G-G.

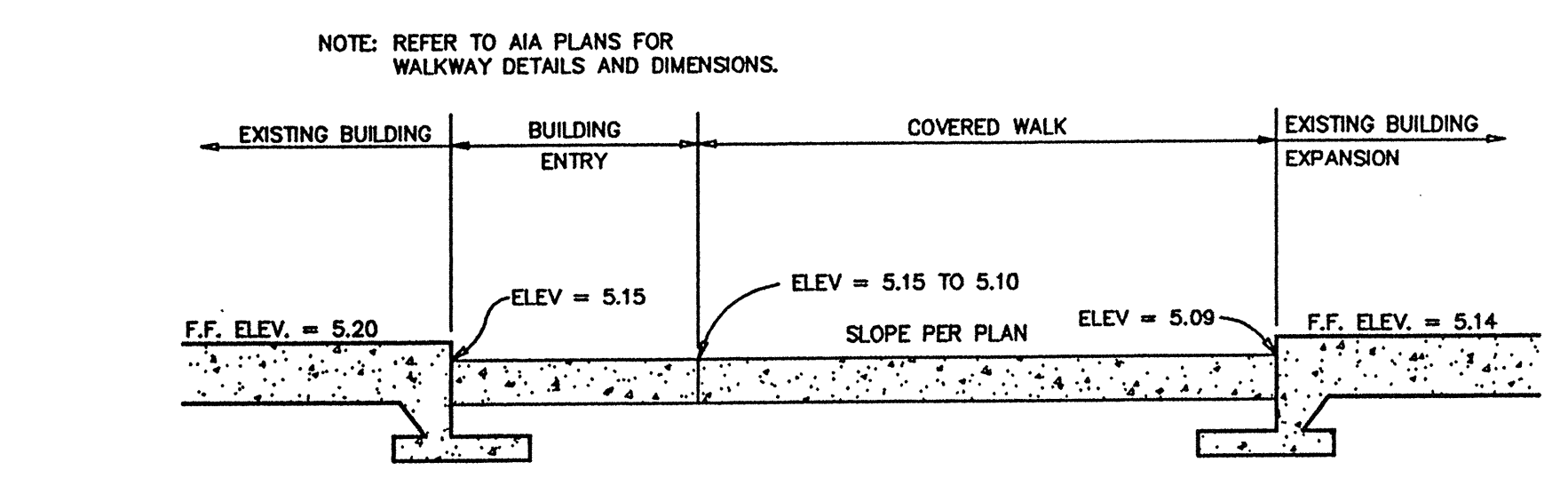


**SECTION D-D**  
N.T.S.

NOTE: REFER TO THIS SHEET FOR RETAINING WALL DETAILS. RAILROAD TIES AS ALTERNATE PER AIA DIRECTION.

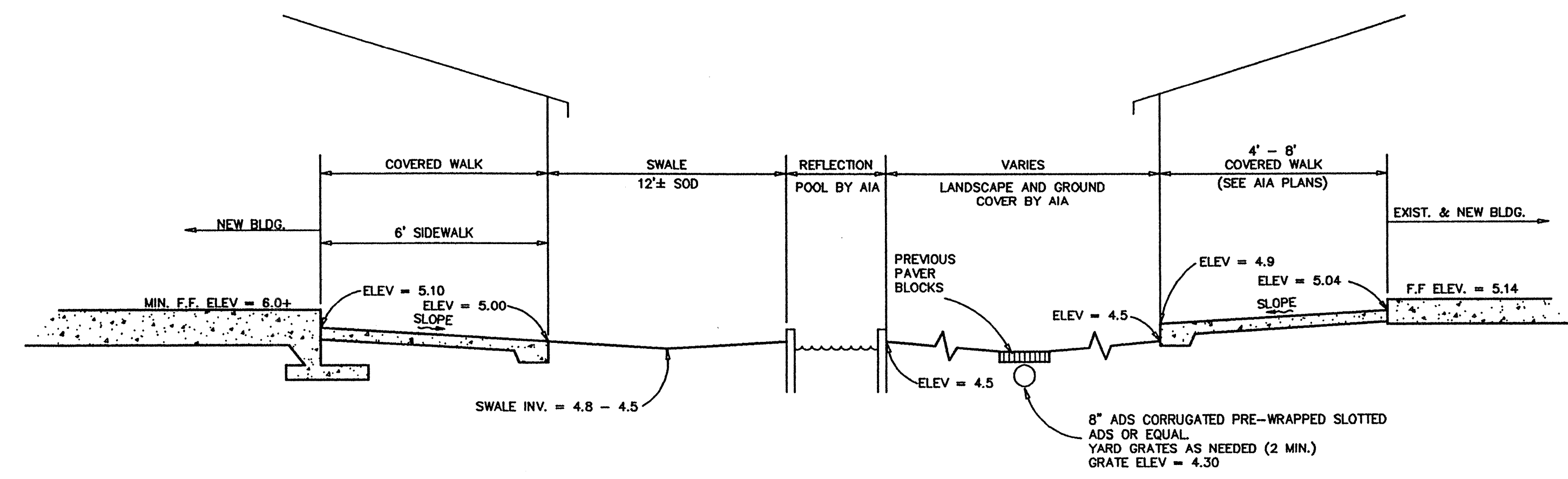


**PARKING LOT AND DRIVE STRUCTURE SPECIFICATION**  
N.T.S.



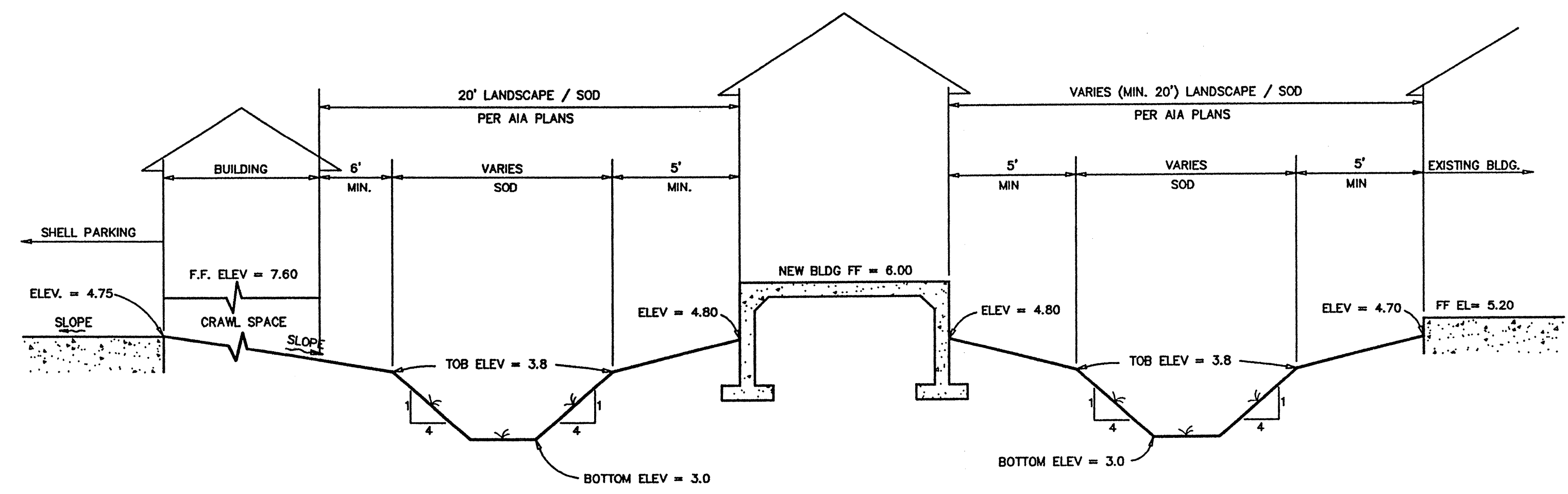
**SECTION E-E**  
N.T.S.

NOTE: REFER TO AIA PLANS FOR WALKWAY DETAILS AND DIMENSIONS.

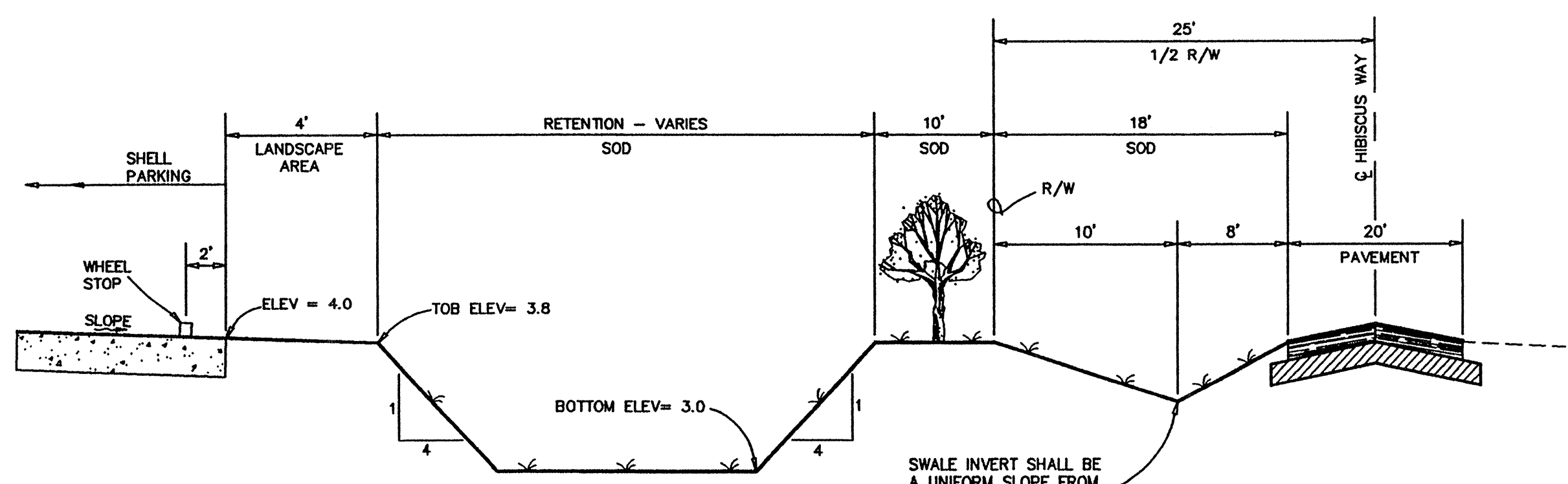


**SECTION B-B**  
N.T.S.

8" ADS CORRUGATED PRE-WRAPPED SLOTTED ADS OR EQUAL. YARD GRATES AS NEEDED (2 MIN.) GRATE ELEV = 4.30

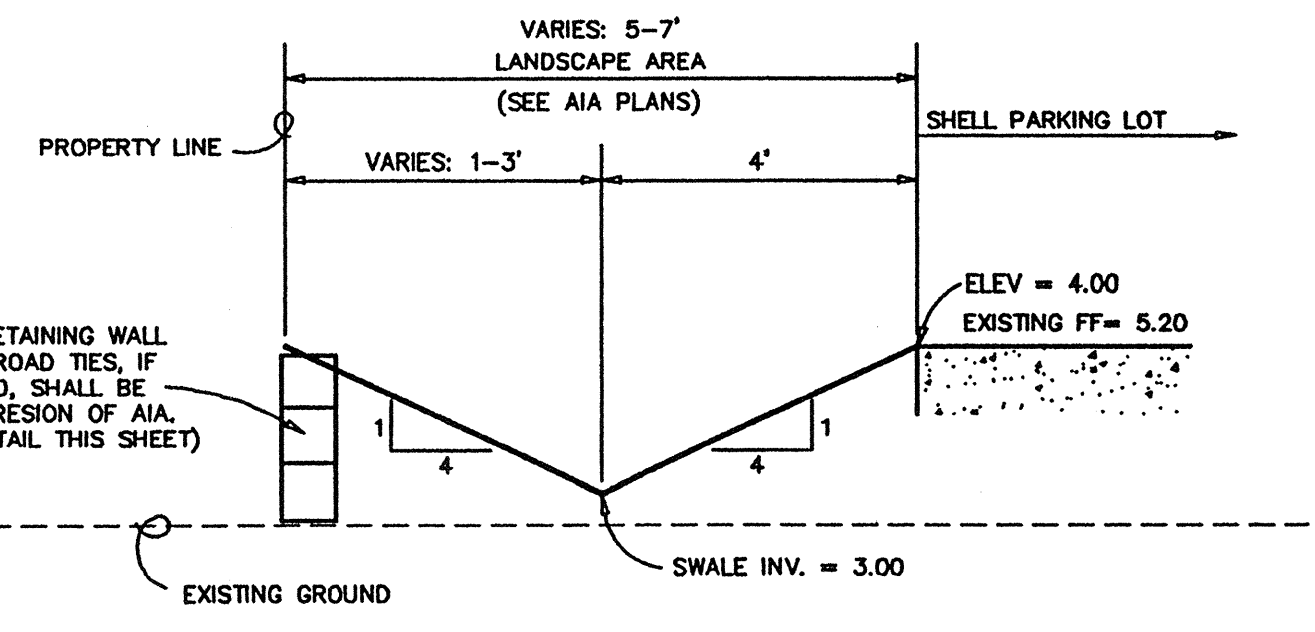


**SECTION F-F**  
N.T.S.



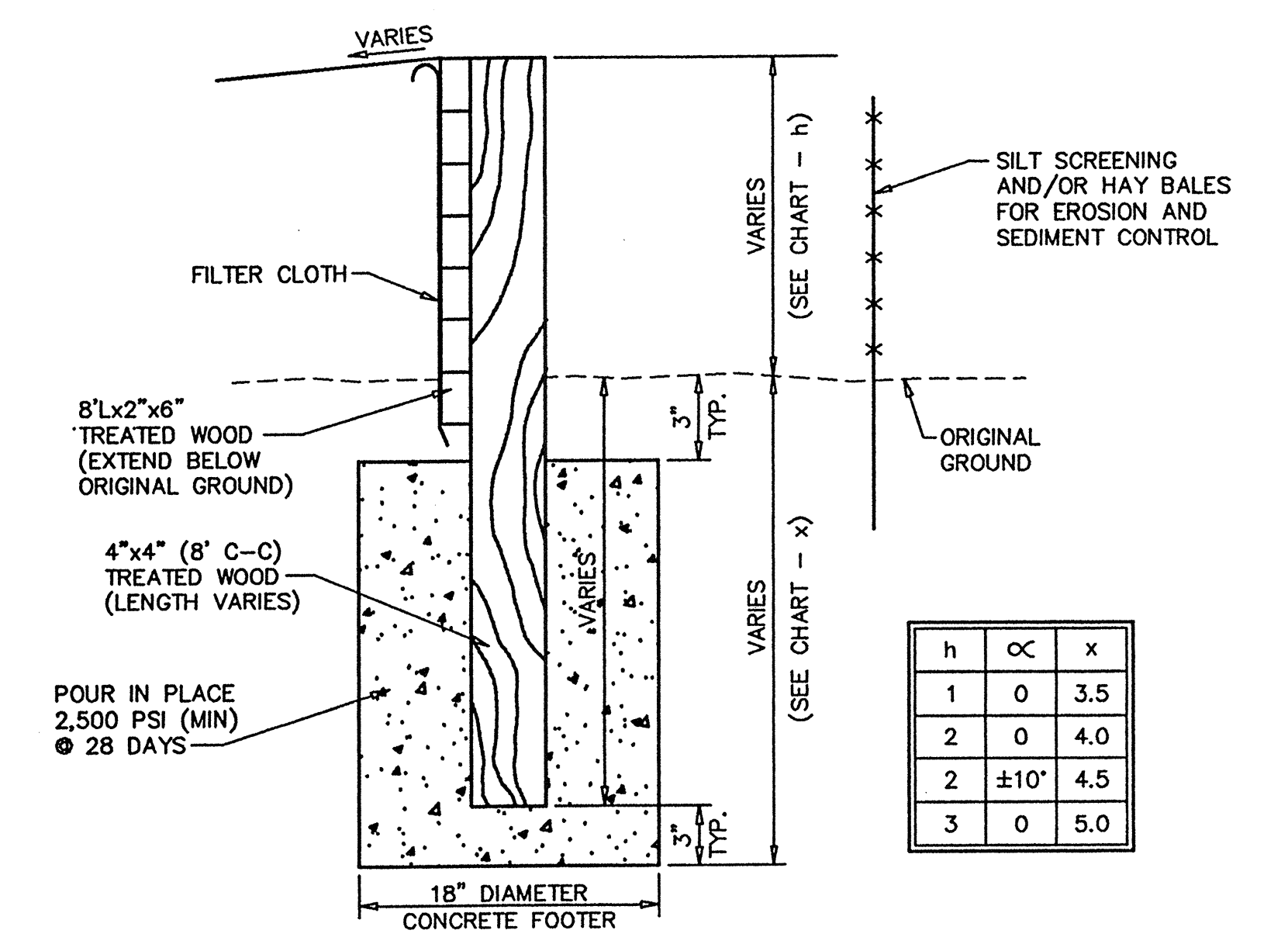
**SECTION C-C**  
N.T.S.

SWALE INVERT SHALL BE A UNIFORM SLOPE FROM VALLEY CURB TO VALLEY CURB. INVERT TO ASSURE POSITIVE SURFACE DRAINAGE FLOW.



**SECTION G-G**  
N.T.S.

WOOD RETAINING WALL OR RAILROAD TIES, IF REQUIRED, SHALL BE AT DISCRETION OF AIA. (SEE DETAIL THIS SHEET)



**WOOD RETAINING WALL**  
N.T.S.

A.R. Shroyer  
 3/23/77

Zoller, Najar & Shroyer, Inc.  
 Engineers, Planners, Surveyors,  
 Landscape Architects & Environmental Consultants  
 10000 W. BAYVIEW DRIVE, SUITE 200  
 WEST PALM BEACH, FLORIDA 33411  
 TEL: 561-833-1111 FAX: 561-833-1112  
 WWW.ZNS.COM

FILE NO. 13700  
 DATE 3-7-99  
 DESIGNED MSD  
 DRAWN TZM  
 JOB NO. 00-21424  
 SCALE: AS SHOWN

REVISIONS  
 1  
 2  
 3  
 4  
 5  
 6  
 7

© 1999 ZOLLER, NAJAR & SHROYER, INC.  
 THIS DOCUMENT IS PROTECTED BY SECTION 106  
 OF THE UNITED STATES COPYRIGHT ACT. REPRO-  
 DUCING OR TRANSMITTING IN ANY FORM OR BY  
 ANY MEANS, ELECTRONIC OR MECHANICAL, IN-  
 CLUDING PHOTOCOPYING, RECORDING, OR BY  
 WITHOUT THE PRIOR WRITTEN CONSENT OF ZOLLER,  
 NAJAR & SHROYER, INC. IS STRICTLY PROHIBITED.  
 GRANTED SPECIFICALLY TO GOVERNMENTAL  
 AGENCIES TO REPRODUCE THIS DOCUMENT  
 IN COMPLIANCE WITH F.S. CHAPTER 119.

GRADING DETAILS  
 FOR  
**LONGBOAT KEY ART CENTER COMPLEX**  
 LOCATED IN  
 SECTION 15, TOWNSHIP 35 SOUTH, RANGE 16 EAST  
 MANATEE COUNTY, FLORIDA

**ZNS**  
 SHEET C-5