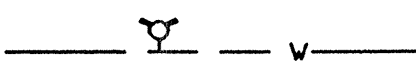
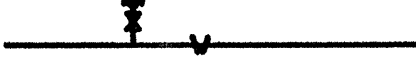



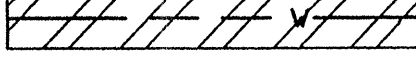
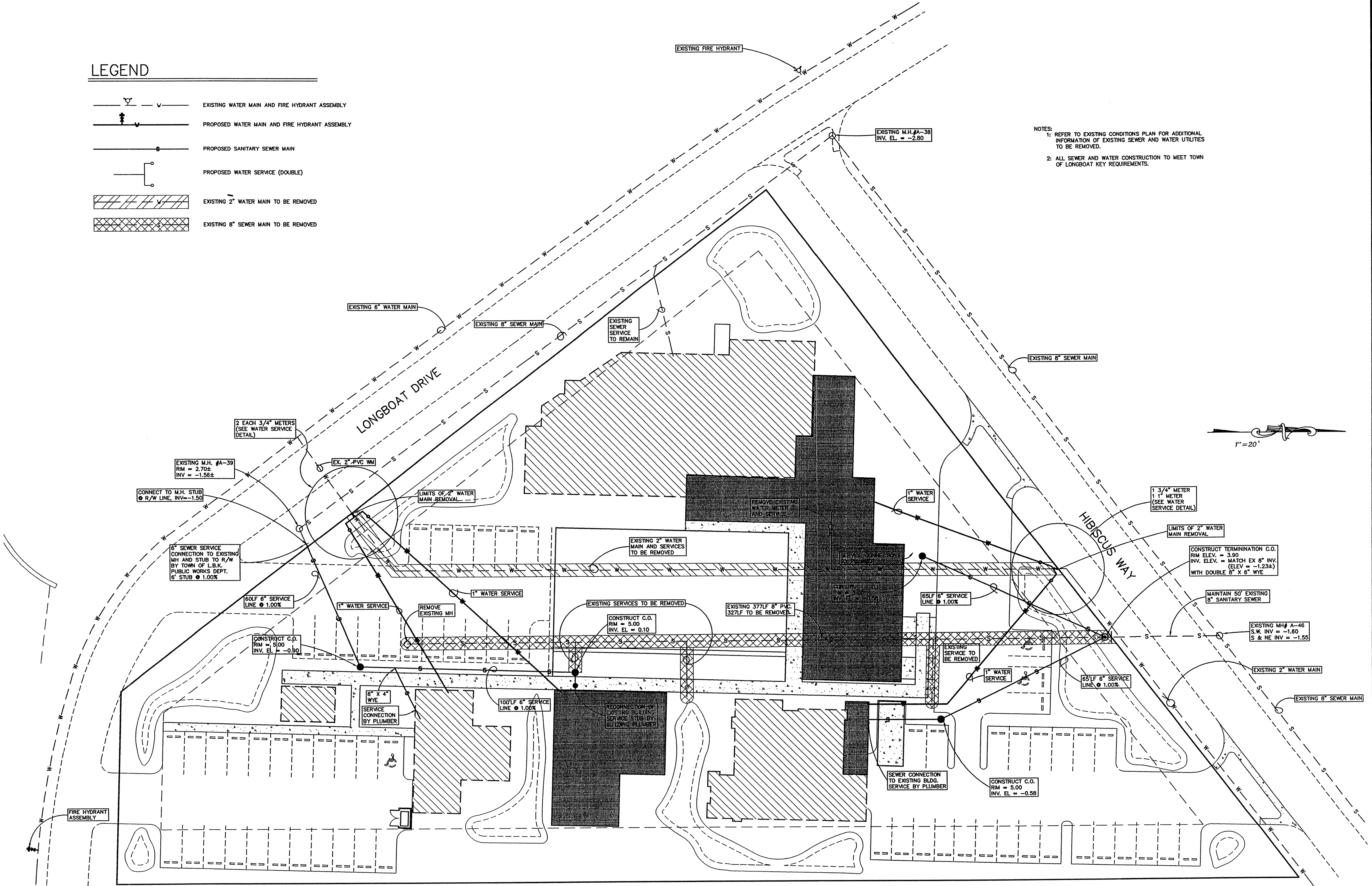


Copyright © 1998 Zoller, Najar & Shroyer, Inc. Plot date and time: 19990310.1417
 Sheet Title: WATER AND SEWER PLAN
 Job Number: 00-21424 CAD File Name: P:\CAD\Longboat Arts Long-ws.dwg
 Job Number: 00-21424 File Number: 13700
 Sheet #: C-4 SP #:

LEGEND

-  EXISTING WATER MAIN AND FIRE HYDRANT ASSEMBLY
-  PROPOSED WATER MAIN AND FIRE HYDRANT ASSEMBLY
-  PROPOSED SANITARY SEWER MAIN
-  PROPOSED WATER SERVICE (DOUBLE)
-  EXISTING 2" WATER MAIN TO BE REMOVED
-  EXISTING 8" SEWER MAIN TO BE REMOVED

- NOTES:**
- 1: REFER TO EXISTING CONDITIONS PLAN FOR ADDITIONAL INFORMATION OF EXISTING SEWER AND WATER UTILITIES TO BE REMOVED.
 - 2: ALL SEWER AND WATER CONSTRUCTION TO MEET TOWN OF LONGBOAT KEY REQUIREMENTS.



ZOLLER, NAJAR & SHROYER, INC.
 ENGINEERS, PLANNERS, SURVEYORS,
 LANDSCAPE ARCHITECTS & ENVIRONMENTAL CONSULTANTS
 2811 S.W. 11th Street, Suite 100
 Fort Lauderdale, Florida 33309
 TEL: (954) 571-1111 FAX: (954) 571-1112
 WWW.ZNS.COM

A. R. Gluck
 5/23/19

DESIGNED: MBS DATE: 3-4-99
 DRAWN: ZJW JOB NO.: 00-21424 SCALE: 1"=20'

FILE NO.: 13700

REVISIONS
 1
 2
 3
 4
 5
 6
 7

© 1998 ZOLLER, NAJAR & SHROYER, INC.
 THIS DOCUMENT IS PROTECTED BY SECTION 106
 OF THE FLORIDA CONSTITUTION AND BY
 FEDERAL COPYRIGHT LAWS. NO PART OF THIS
 DOCUMENT OR THE INFORMATION CONTAINED
 HEREIN MAY BE REPRODUCED OR
 TRANSMITTED IN ANY FORM OR BY ANY
 MEANS WHATSOEVER, ELECTRONIC OR
 MECHANICAL, INCLUDING PHOTOCOPYING,
 RECORDING, OR BY ANY INFORMATION
 STORAGE AND RETRIEVAL SYSTEM, WITHOUT
 THE WRITTEN CONSENT OF ZOLLER,
 NAJAR & SHROYER, INC. ALL RIGHTS ARE
 RESERVED. PERMISSION IS GRANTED TO
 REPRODUCE THIS DOCUMENT FOR
 OFFICIAL USE ONLY IN COMPLIANCE WITH
 F.S. CHAPTER 118.

WATER AND SEWER PLAN
 FOR
 LONGBOAT KEY ART CENTER COMPLEX
 LOCATED IN
 SECTION 15, TOWNSHIP 35 SOUTH, RANGE 16 EAST
 MANATEE COUNTY, FLORIDA

SHEET C-4