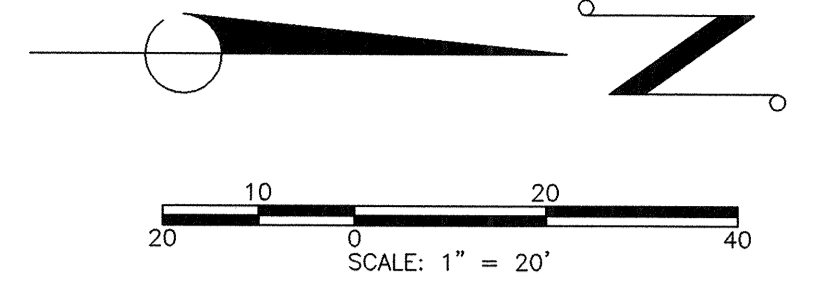


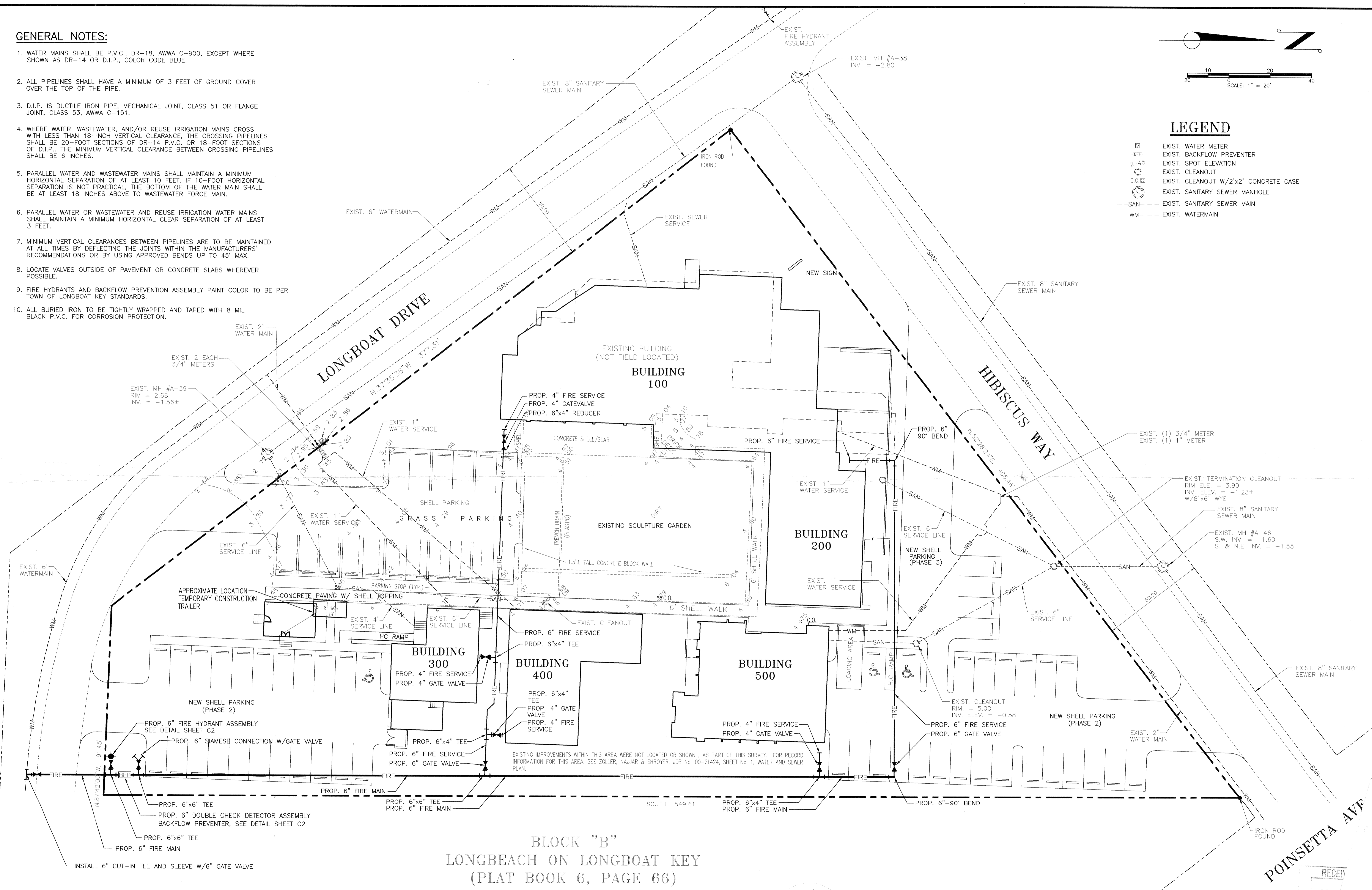
GENERAL NOTES:

1. WATER MAINS SHALL BE P.V.C., DR-18, AWWA C-900, EXCEPT WHERE SHOWN AS DR-14 OR D.I.P., COLOR CODE BLUE.
2. ALL PIPELINES SHALL HAVE A MINIMUM OF 3 FEET OF GROUND COVER OVER THE TOP OF THE PIPE.
3. D.I.P. IS DUCTILE IRON PIPE, MECHANICAL JOINT, CLASS 51 OR FLANGE JOINT, CLASS 53, AWWA C-151.
4. WHERE WATER, WASTEWATER, AND/OR REUSE IRRIGATION MAINS CROSS WITH LESS THAN 18-INCH VERTICAL CLEARANCE, THE CROSSING PIPELINES SHALL BE 20-FOOT SECTIONS OF DR-14 P.V.C. OR 18-FOOT SECTIONS OF D.I.P.. THE MINIMUM VERTICAL CLEARANCE BETWEEN CROSSING PIPELINES SHALL BE 6 INCHES.
5. PARALLEL WATER AND WASTEWATER MAINS SHALL MAINTAIN A MINIMUM HORIZONTAL SEPARATION OF AT LEAST 10 FEET. IF 10-FOOT HORIZONTAL SEPARATION IS NOT PRACTICAL, THE BOTTOM OF THE WATER MAIN SHALL BE AT LEAST 18 INCHES ABOVE TO WASTEWATER FORCE MAIN.
6. PARALLEL WATER OR WASTEWATER AND REUSE IRRIGATION WATER MAINS SHALL MAINTAIN A MINIMUM HORIZONTAL CLEAR SEPARATION OF AT LEAST 3 FEET.
7. MINIMUM VERTICAL CLEARANCES BETWEEN PIPELINES ARE TO BE MAINTAINED AT ALL TIMES BY DEFLECTING THE JOINTS WITHIN THE MANUFACTURERS' RECOMMENDATIONS OR BY USING APPROVED BENDS UP TO 45° MAX.
8. LOCATE VALVES OUTSIDE OF PAVEMENT OR CONCRETE SLABS WHEREVER POSSIBLE.
9. FIRE HYDRANTS AND BACKFLOW PREVENTION ASSEMBLY PAINT COLOR TO BE PER TOWN OF LONGBOAT KEY STANDARDS.
10. ALL BURIED IRON TO BE TIGHTLY WRAPPED AND TAPED WITH 8 MIL BLACK P.V.C. FOR CORROSION PROTECTION.



LEGEND

- ◻ EXIST. WATER METER
- ◻ EXIST. BACKFLOW PREVENTER
- 2.45 EXIST. SPOT ELEVATION
- EXIST. CLEANOUT
- EXIST. CLEANOUT W/2'x2' CONCRETE CASE
- EXIST. SANITARY SEWER MANHOLE
- SAN- EXIST. SANITARY SEWER MAIN
- WM- EXIST. WATERMAIN



BLOCK "B"
LONGBEACH ON LONGBOAT KEY
 (PLAT BOOK 6, PAGE 66)

| NO. | BY | DATE | DESCRIPTION | NO. | BY | DATE | DESCRIPTION |
|-----|-----|---------|--|-----|----|------|-------------|
| 1 | PSN | 12-1-00 | REVISIONS TO FIRE SERVICE PER TOWN OF LONGBOAT KEY | 6 | | | |
| 2 | | | | 7 | | | |
| 3 | | | | 8 | | | |
| 4 | | | | 9 | | | |
| 5 | | | | 10 | | | |

George F. Young, Inc.
 ARCHITECTURE • ENGINEERING • ENVIRONMENTAL • LANDSCAPE ARCHITECTURE • PLANNING • SURVEYING
 ST. PETERSBURG • TAMPA • BRADENTON • SARASOTA • GAINESVILLE • NORTH PALM BEACH
 ENGINEERING STATE BUSINESS NO. EB-0000128 • SURVEYING STATE BUSINESS NO. LB-0000128
 78 SARASOTA CENTER BOULEVARD • SARASOTA, FLORIDA 34240
 Since 1919 PHONE (941) 371-6392 • FAX (941) 378-3216 • E-MAIL info@georgeyoung.com

George F. Young
 ENGINEER OF RECORD
 12-1-00
 DATE

TASK INITIALS DATE PREPARED FOR:
 DESIGN G.A.R. 11-20-00
 DRAWN P.S.N. 11-20-00
 CHECKED
 QUALITY CHK.
 SCALE 1"=20'

TOWN OF LONGBOAT KEY FLORIDA
THE LONGBOAT KEY CENTER FOR THE ARTS
FIRE SERVICE PLAN

RECEIVED
 DEC - 10