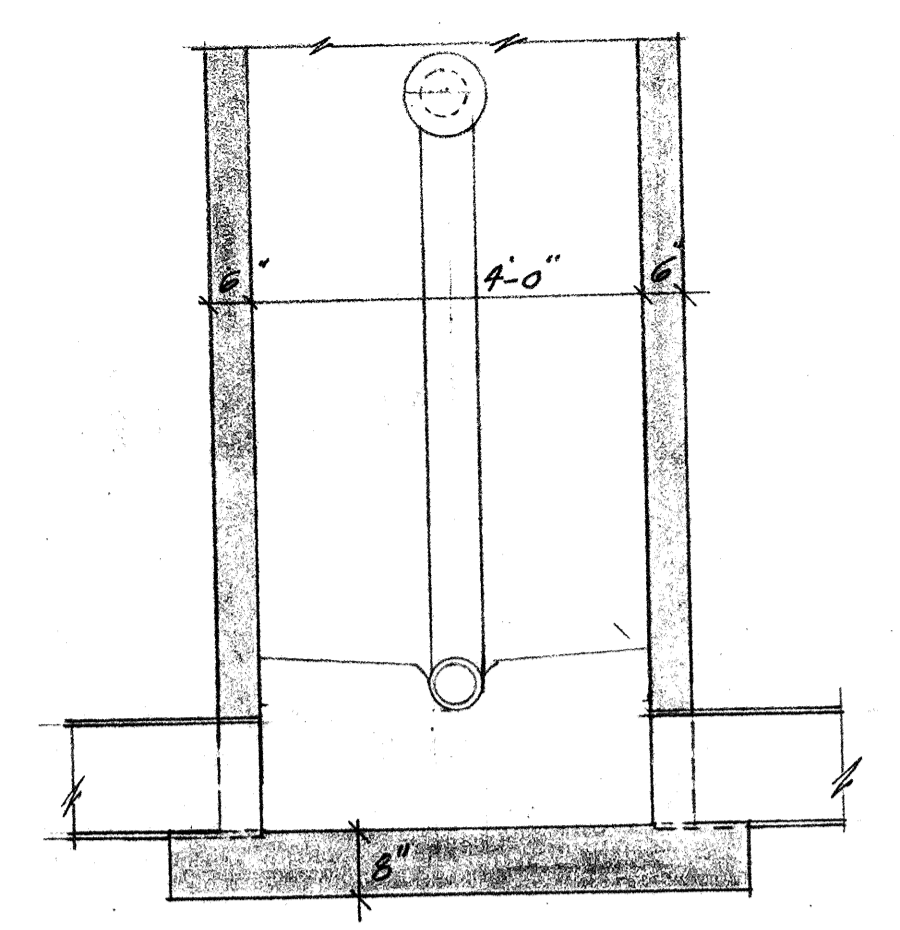
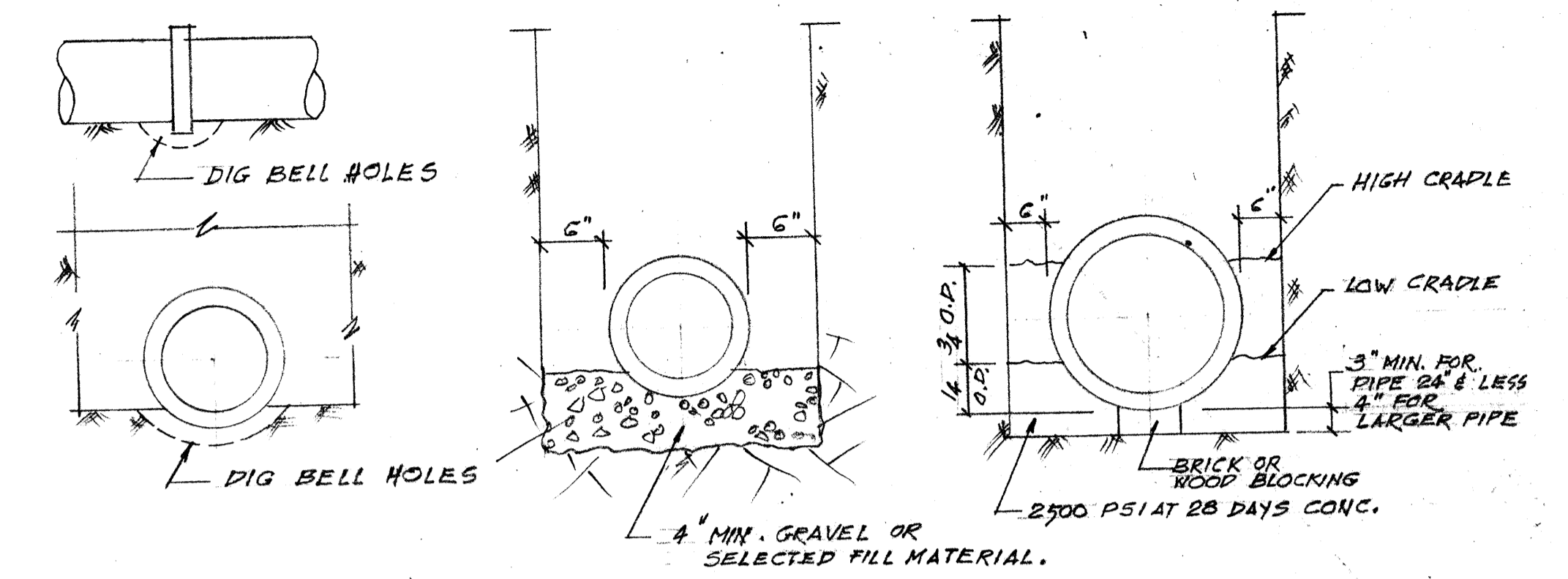


PLAN

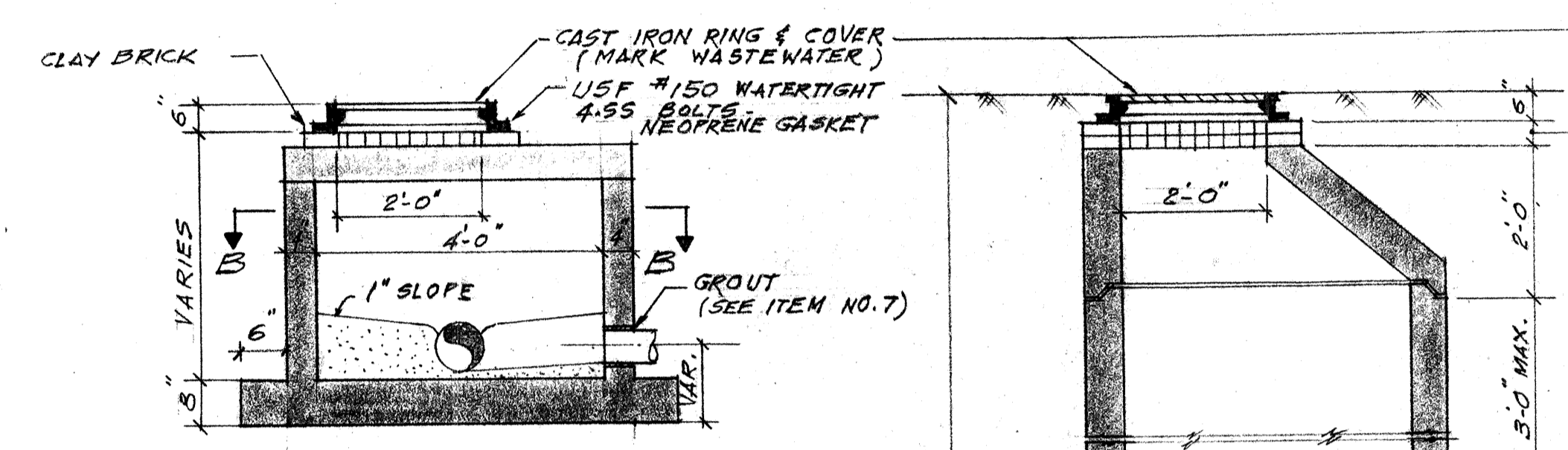
PLAN



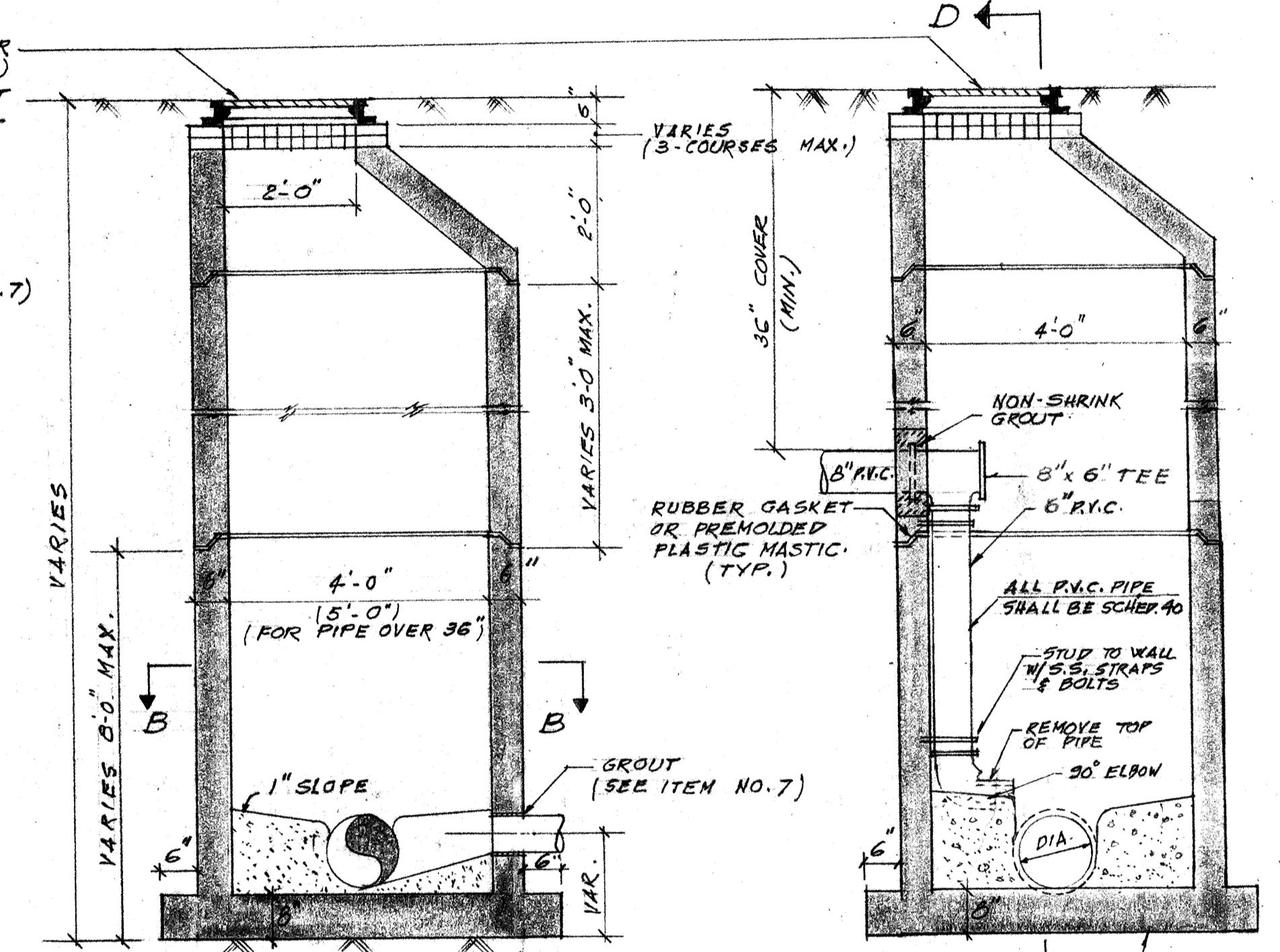
SECTION D-D



TRENCH IN EARTH TRENCH IN ROCK CONCRETE CRADLES



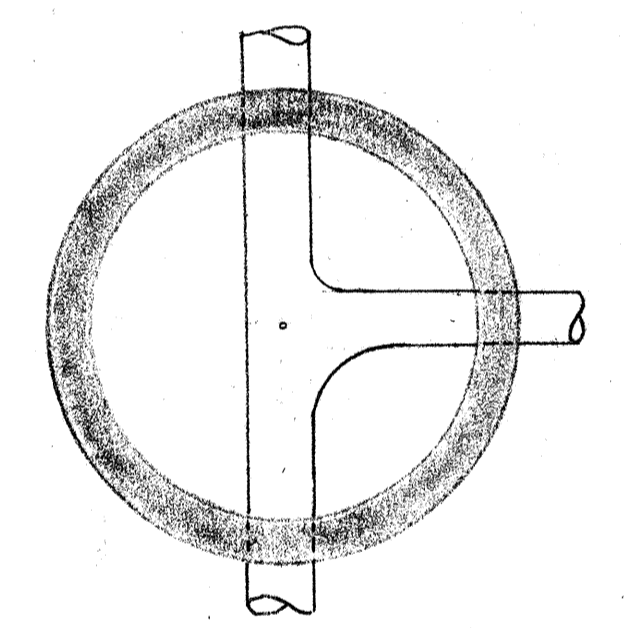
SECTION A-A



SECTION C-C

SECTION

SECTION

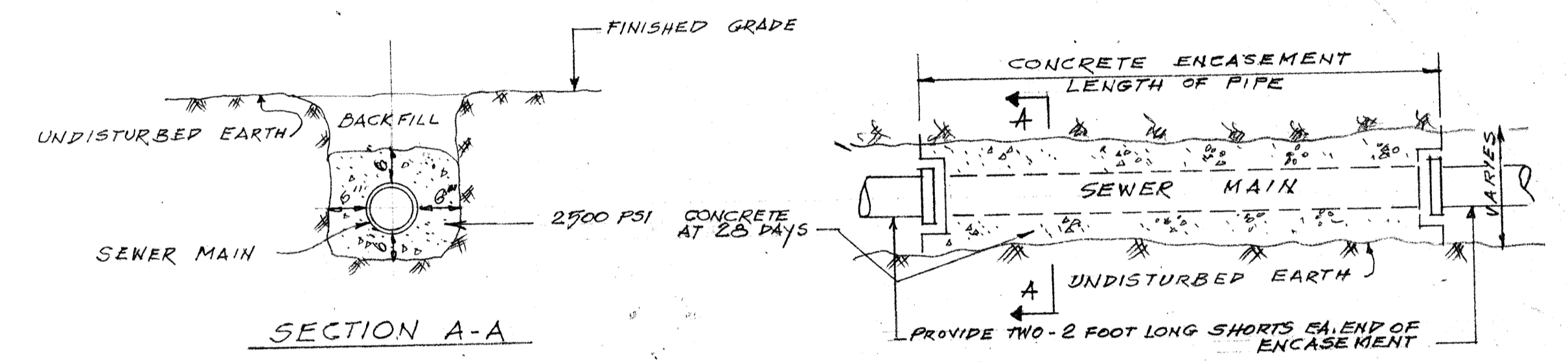


SECTION B-B

FOR DEPTHS 5'-0" & LESS

FOR DEPTH OVER 5'-0"

DROP MANHOLE



NOTE: WHERE SEWER AND WATER MAINS OR SEWER AND STORM DRAINS CROSS WITHIN 10" VERTICAL CLEARANCE, THE SEWER MAIN WILL BE ENCASED IN CONCRETE FOR A DISTANCE OF 10' EACH SIDE OF THE POINT OF INTERSECTION.

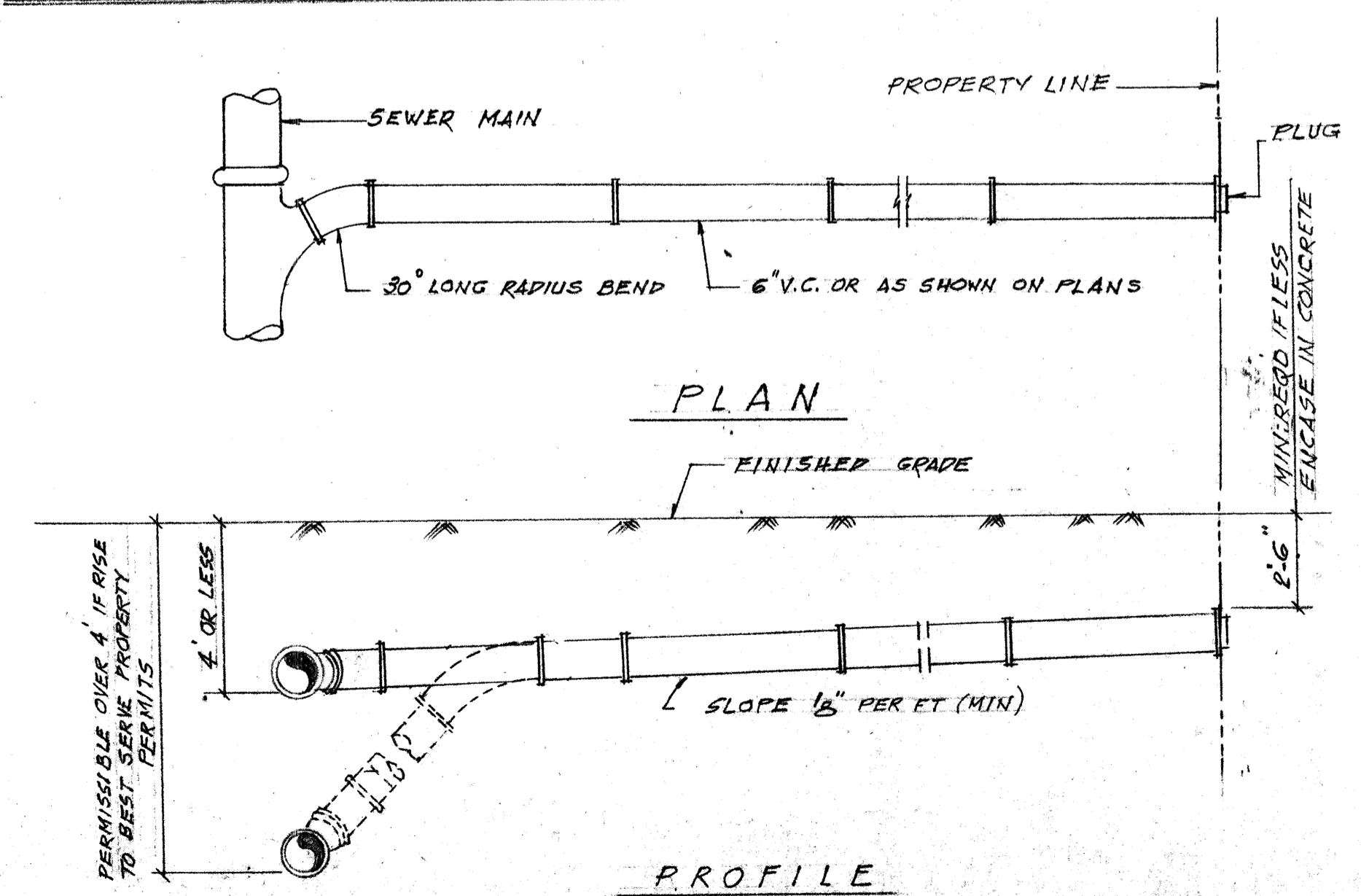
TYPICAL EXCAVATION & PIPE SETTINGS

MANHOLES, SPECIFICATIONS

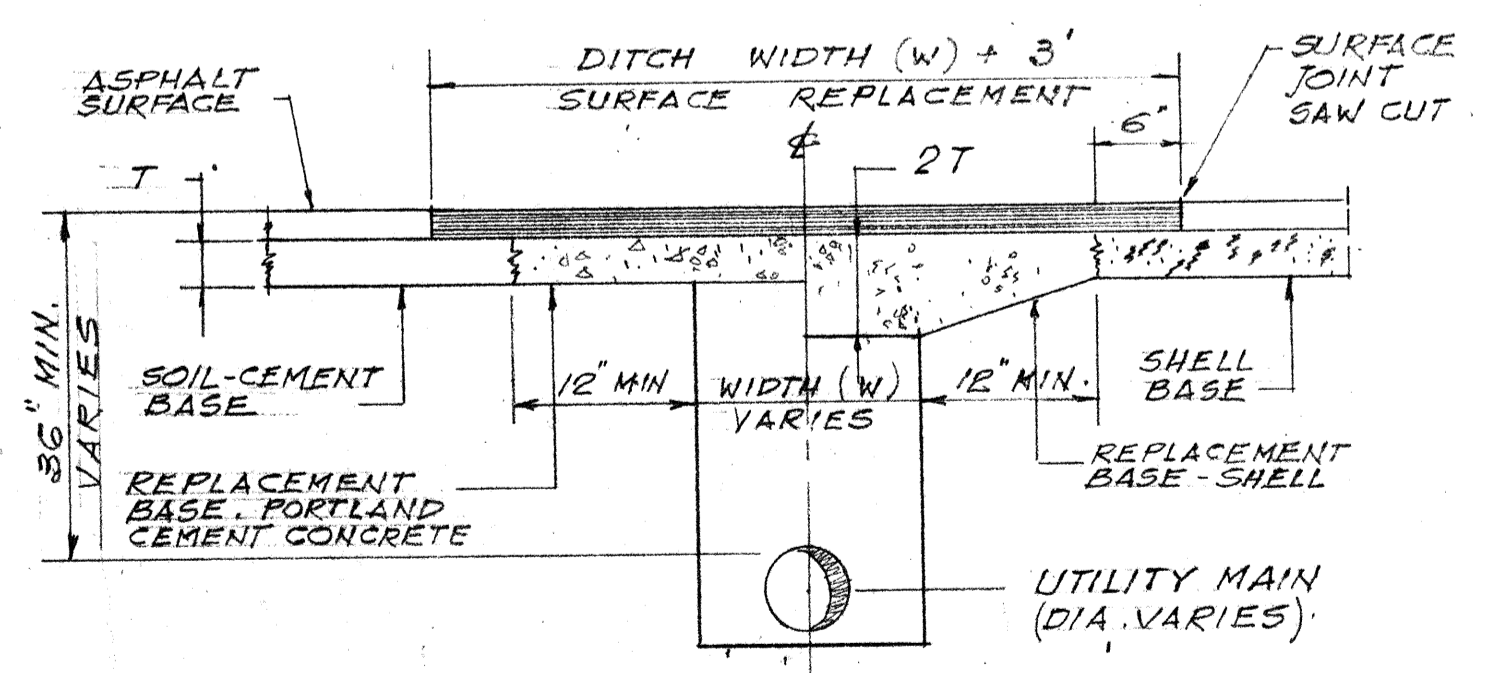
1. MANHOLES SHALL COMPLY WITH SPECIFICATION C-47B LATEST REVISION "PRECAST REINFORCED CONCRETE MANHOLE SECTIONS"
2. CONCRETE SHALL BE 4000 PSI AT 28 DAYS MINIMUM STRENGTH, WITH TYPE I CEMENT.
3. HEAVY DUTY WATERPROOF MANHOLE FRAME AND LID "U.S. FOUNDRY NO. 150 (360#) w/ 1/8" NEOPRENE GASKET, COUNTERSUNK S.S. SCREWS.
4. REINFORCING PER A.S.T.M. SPEC. C-47B, LATEST REVISION.
5. LEVELING BRICKS TO BE CLAY; MORTAR TO BE 2-PARTS CLEAN SAND AND 1-PART CEMENT WITH NO MORE THAN 1/4 PART HYDRATED LIME WITH JOINTS FULL AND STRUCK FLUSH.
6. NO STEPS SHALL BE USED.
7. COMPLETELY FILL SPACE BETWEEN PIPES AND MANHOLE WALL WITH CEMENT MORTAR AFTER PIPE IS SET, WITH 15 LB EMBECO PER 100 LB CEMENT.

GENERAL NOTES

1. WHERE WATER AND WASTEWATER MAINS CROSS WITH LESS THAN 18" VERTICAL CLEARANCE, THE WASTEWATER PIPE SHALL BE OF EITHER CAST IRON OR CONCRETE ENCASED VITRIFIED CLAY (20" MIN.), CENTERED ON THE POINT OF CROSSING.
2. PARALLEL WATER & WASTEWATER MAINS SHALL MAINTAIN A HORIZONTAL SEPARATION OF AT LEAST 10' WHERE PRACTICAL.
3. PARALLEL WATER & WASTEWATER MAINS WITH LESS THAN 10' HORIZONTAL SEPARATION, SHALL REQUIRE WASTEWATER LINE TO BE ENCASED IN CONCRETE [6" MIN. ALL FOUR SIDES].
4. ALL IRON PIPE SHALL BE WRAPPED IN POLYETHYLENE IN ACCORDANCE WITH ANSI A 21.5.



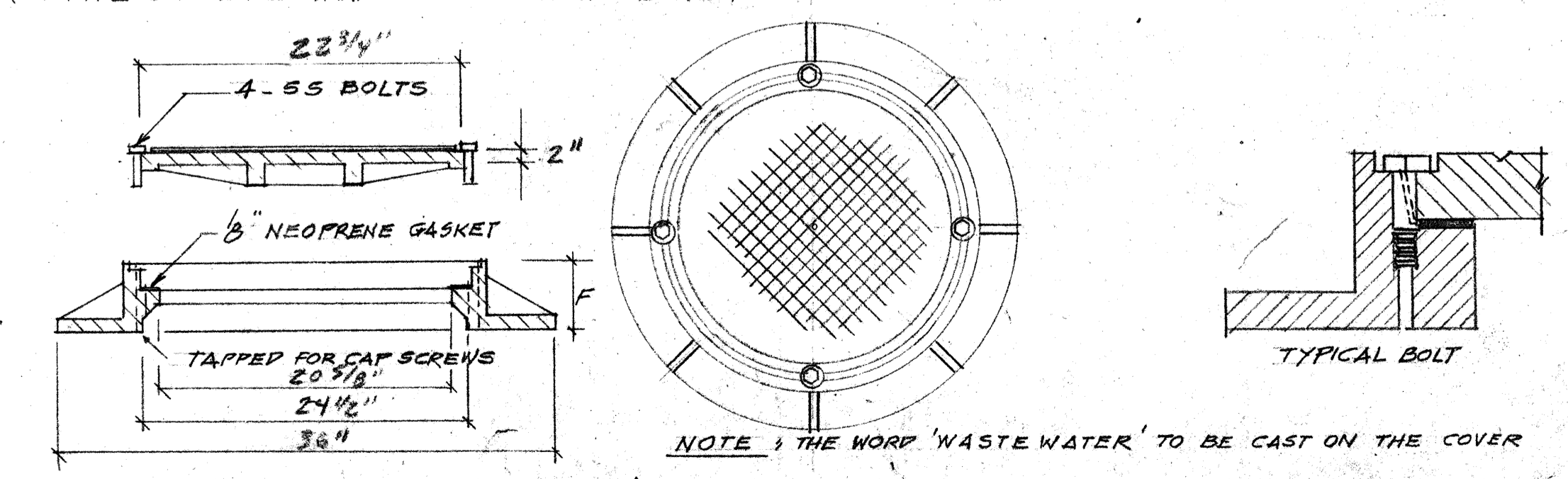
TYPICAL SERVICE CONNECTION



REPLACEMENT OF FLEXIBLE PAVEMENT

1. SHELL-BASE MATERIAL SHALL BE COMPACTED TO 98% DENSITY, A.A.S.H.T.O. T-190
2. APPROVED SUB-BASE SHALL BE COMPACTED IN 6" LAYERS TO A MAXIMUM DENSITY OF 98% A.A.S.H.T.O. T-190
3. ASPHALT CONCRETE PAVEMENT JOINTS SHALL BE MECHANICALLY SAW CUT.
4. SURFACE MATERIAL WILL BE CONSISTENT WITH THE EXISTING SURFACE.
5. SURFACE TREATED PAVEMENT JOINTS SHALL BE LAPPED AND FEATHERED.
6. SUB-BASE MATERIAL SHALL BE APPROVED BY THE TOWN ENGINEERS.
7. SHELL SURFACED ROADS SHALL BE COMPACTED AS SPECIFIED WITH SHELL-BASE AND SURFACED TO MATCH THE EXISTING.
8. PERMISSION MUST BE GRANTED BY THE TOWN TO CUT PAVEMENT.
9. TOWN R.O.W. UTILIZATION PERMIT HAS TO BE SECURED PRIOR TO WORK BEING DONE IN THE TOWN R.O.W.

OPEN-CUT ROAD RESTORATION DETAIL



USF NO. 150 MANHOLE RING & COVER DETAIL

USF No.	A	B	C	D	E	F
150	22 3/4"	2"	20 3/8"	24 1/2"	36"	7"

SANITARY SEWER DETAILS

SCALE: 1/2" = 1'-0" EXCEPT AS NOTED

CEDARS EAST