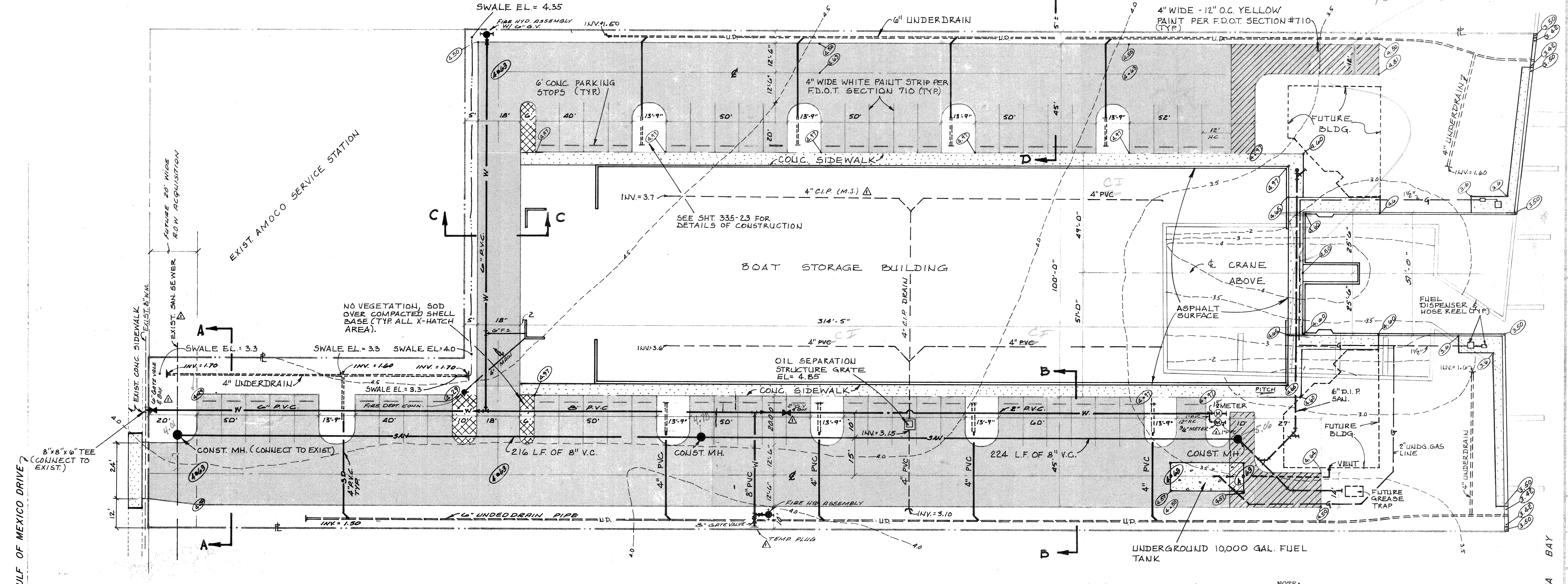


No Public Access



△ Note:
 EXISTING WATER AND SEWER SERVICES TO BE PLUGGED AT MAIN.

See sheet P-1 for water piping after meters.

NOTE:
 For Finger Pier details, see Dwg. No. 335-18. For Seawall details, see Dwg. No. 335-19. For Fuel Storage Tank details, see Dwg. No. 335-16. For Sanitary Sewer continuation, see Dwg. No. 335-14.

GULF OF MEXICO DRIVE

EXIST. AMOCO SERVICE STATION

SARASOTA BAY

BENNETT & BISHOP

THE BOATHOUSE AT LONGBOAT KEY

BARRY LEWIS

DETAIL SITE PLAN

