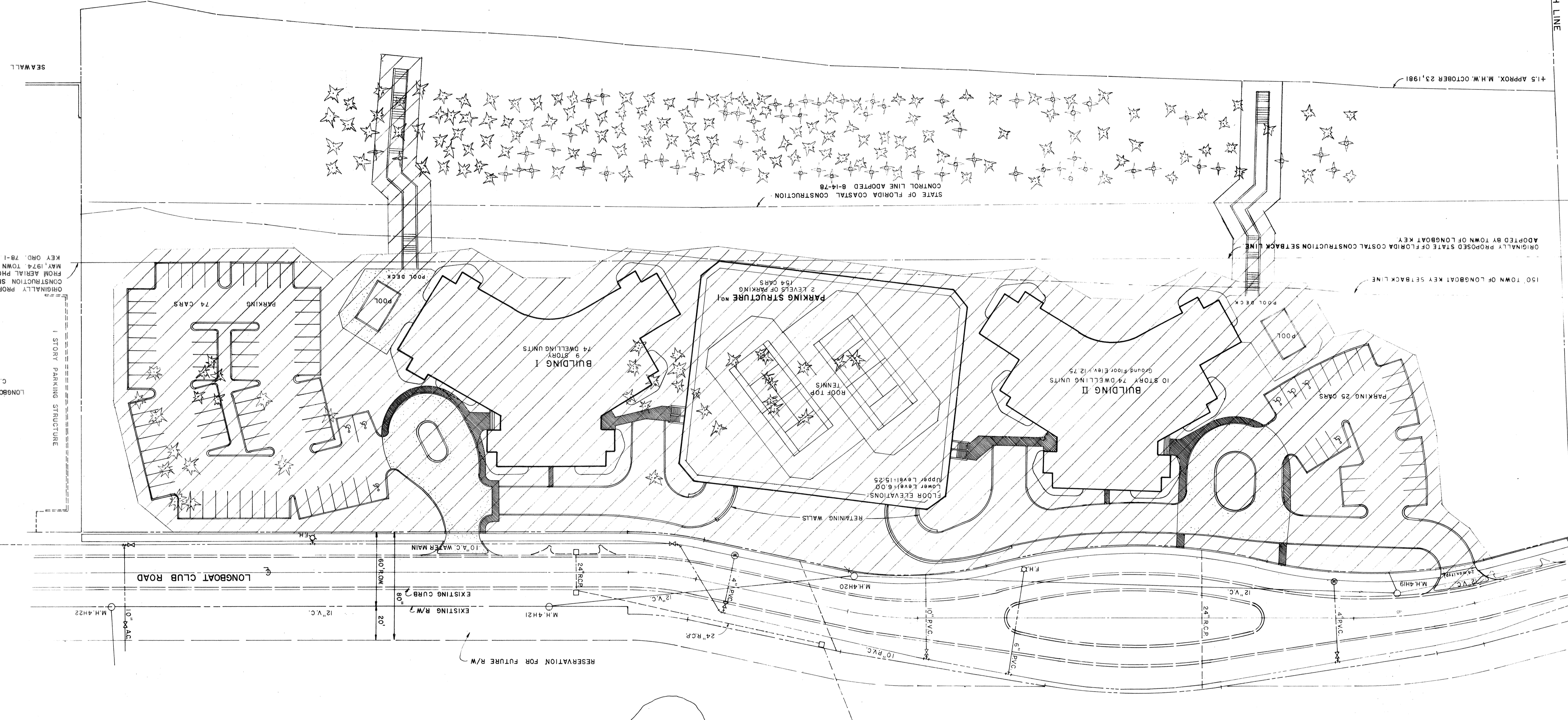


LONGBOAT KEY CLUB GOLF COURSE

FAIRWAY #12

FAIRWAY #6

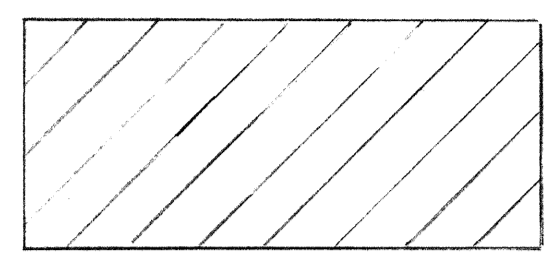


150' TOWN OF LONGBOAT KEY SETBACK LINE
 ORIGINALY PROPOSED STATE OF FLORIDA COASTAL CONSTRUCTION SETBACK LINE
 ADOPTED BY TOWN OF LONGBOAT KEY

STATE OF FLORIDA COASTAL CONSTRUCTION
 CONTROL LINE ADOPTED 8-14-78

+1.5 APPROX. M.H.W. OCTOBER 23, 1981

GULF OF MEXICO



DENOTES AREA TO BE CLEARED

TREE REMOVAL
 REMOVE 59 AUSTRALIAN PINE
 REMOVE 2 PALM

SYMBOLS
 * AUSTRALIAN PINE
 + PALM

NOTE: ALL TREES SHOWN ARE FROM
 1978 BENNETT & BISHOP SURVEY.

ADDCORP, INC.
 THE BEACHES
 TREE LOCATION AND PROTECTION PLAN

DATE	BY	REVISION
7-19-82	W.A.	1"
11-3-80	W.A.	2"
		3"
		4"
		5"
		6"
		7"
		8"
		9"
		10"
		11"
		12"
		13"
		14"
		15"
		16"
		17"
		18"
		19"
		20"

BENNETT & BISHOP
 CONSULTING ENGINEERS & SURVEYORS
 SARASOTA FLORIDA