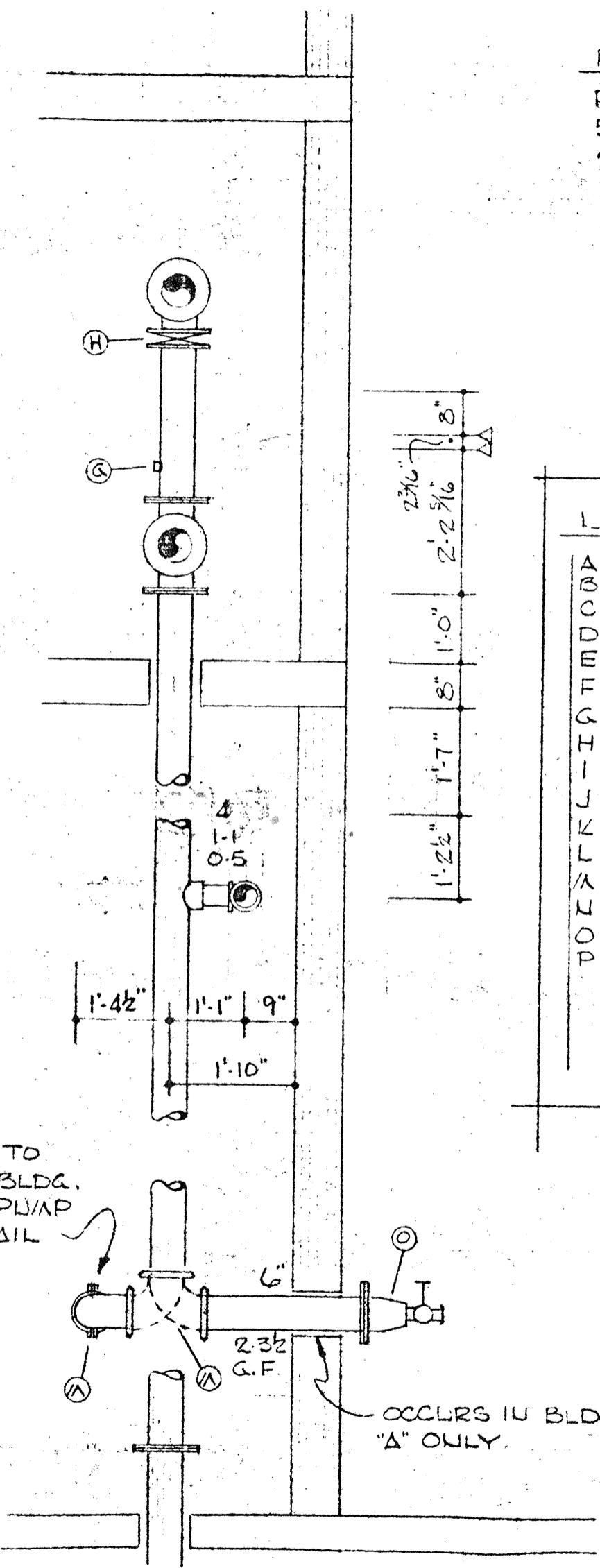


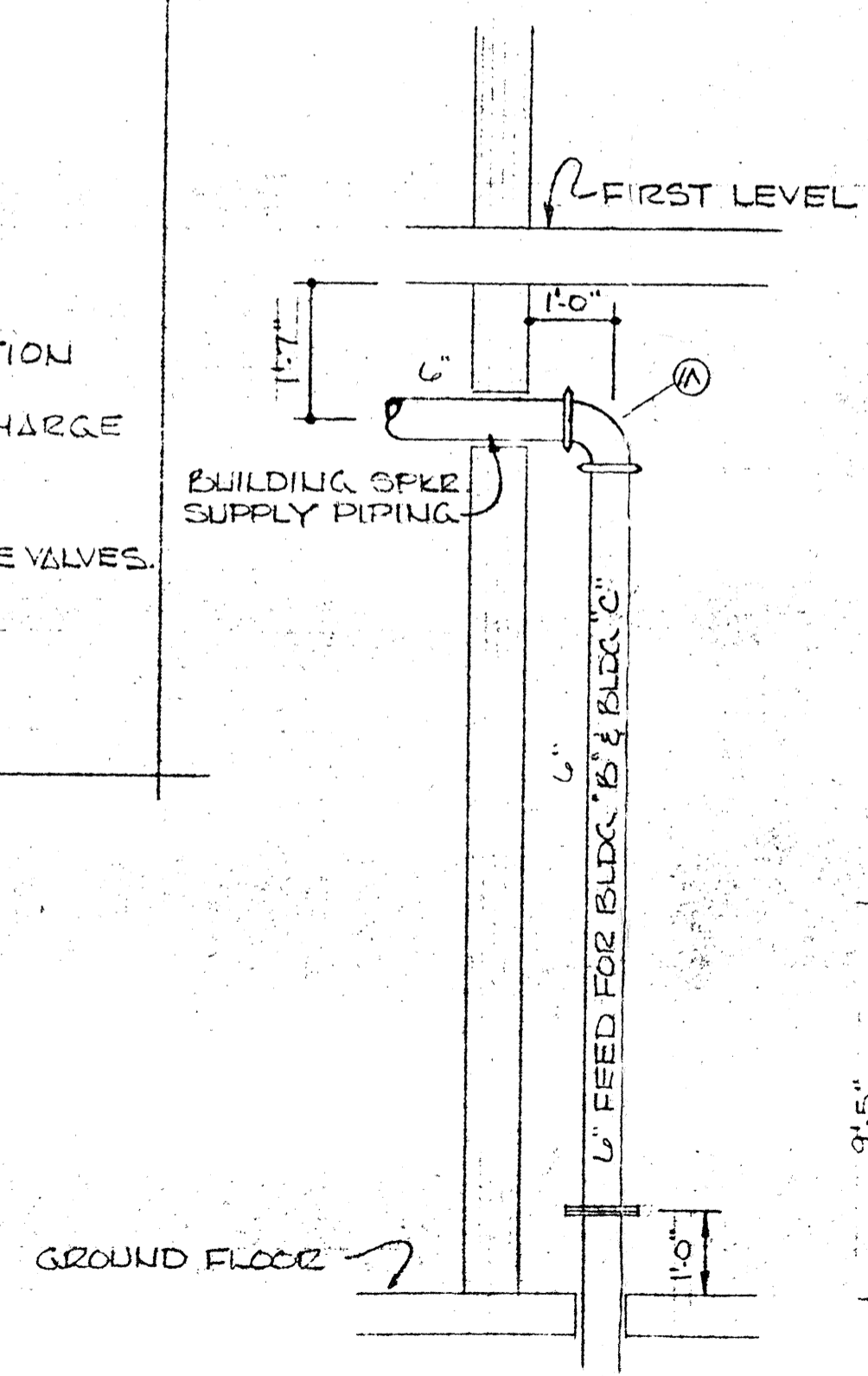
PUMP ASSEMBLY DETAIL
(TYP. FOR BLDG. 'A' & BLDG. 'D') SCALE: 1/2"=1'-0"



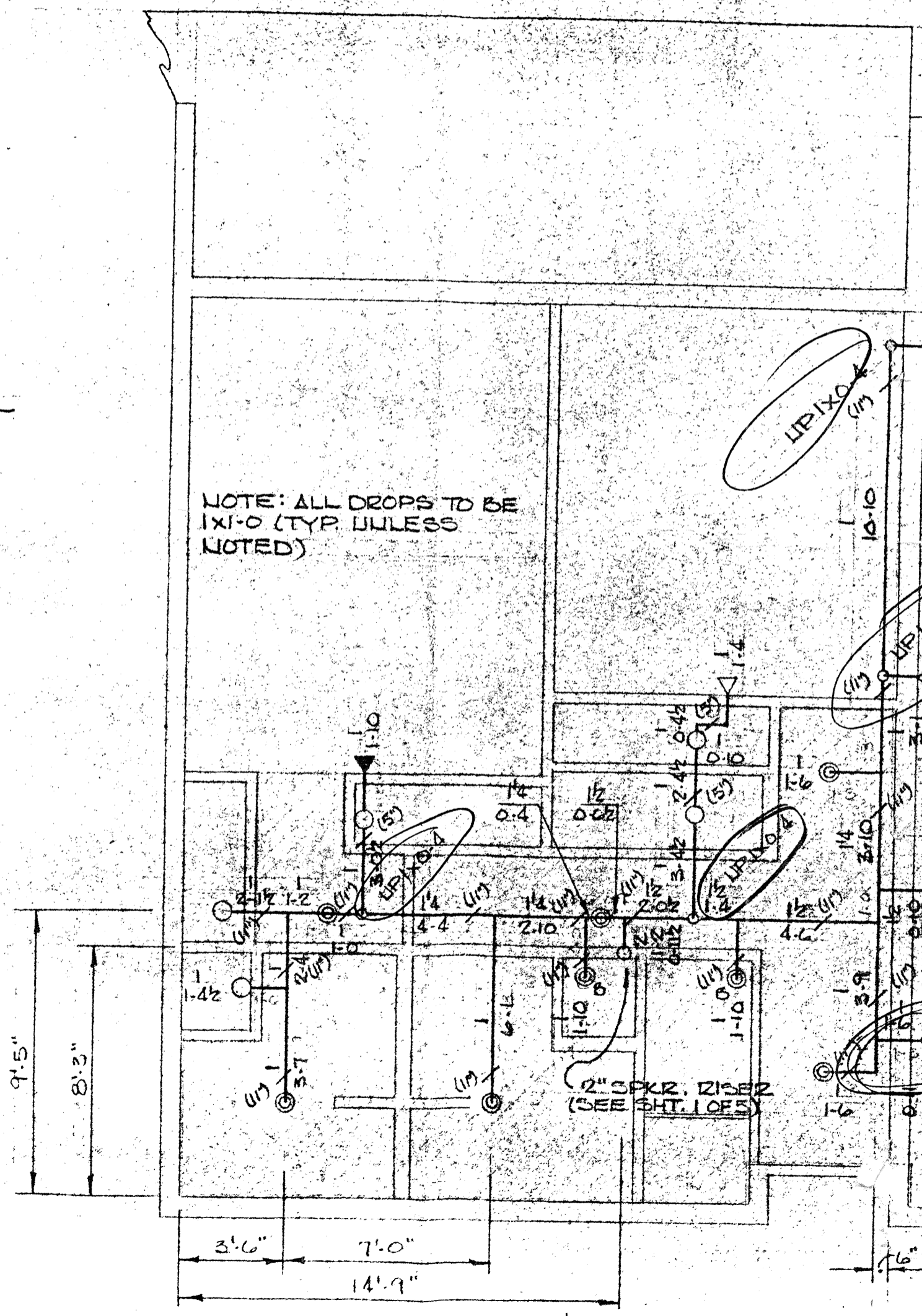
SECTION "A-A"
SCALE: 1/2"=1'-0"

PUMP DATA:
 PEERLESS PUMP - ABF-10
 50 H.P.
 200 VOLTS
 3 PHASE
 60 HZ.
 3550 R.P.M.
 750 G.P.M.
 196 TOTAL HD. FT.

- LEGEND
- A 6" GROOVED COUPLING
 - B 6" O.S.BY GATE VALVE
 - C 6x5 ECCENTRIC FLG. REDUCER
 - D PEERLESS FIRE PUMP
 - E 6x4 CONCENTRIC FLG. REDUCER
 - F 6" DDO-CHECK VALVE
 - G 1" SENSING LINE
 - H 6" BUTTERFLY VALVE
 - I 1/2" THREAD-O-LET FOR JOCKEY PUMP SUCTION
 - J JOCKEY PUMP
 - K 1/4" THREAD-O-LET FOR JOCKEY PUMP DISCHARGE
 - L INDICATES 1/8" TAKE-OUT FOR GASKET
 - M 6" GROOVED ELLS
 - N 4" GROOVED ELL
 - O 6" - 3-WAY TEST HEADER w/(3) 2 1/2" ANGLE HOSE VALVES.
 - P 4" WAFFER CHECK VALVE



SECTION "B-B"
(TYP. FOR BLDG. 'B' & BLDG. 'C') SCALE: 1/2"=1'-0"



TYPICAL UNIT "B"