

SEWER AND WATER NOTES

1. WHERE WATER AND WASTEWATER MAINS CROSS WITH LESS THAN 18" VERTICAL CLEARANCE, THE WASTEWATER PIPE SHALL BE EITHER CAST IRON OR CONCRETE ENCASED WITH RICHED CLAY (20 MIN.), CENTERED ON THE POINT OF CROSSING.
2. PARALLEL WATER AND WASTEWATER MAINS SHALL MAINTAIN A HORIZONTAL SEPARATION OF AT LEAST 10 FEET WHERE PRACTICAL.
3. PARALLEL WATER AND WASTEWATER MAINS WITH LESS THAN 10 FEET HORIZONTAL SEPARATION SHALL REQUIRE WASTE WATER LINE TO BE ENCASED IN CONCRETE (6" MIN., ALL FOUR SIDES).

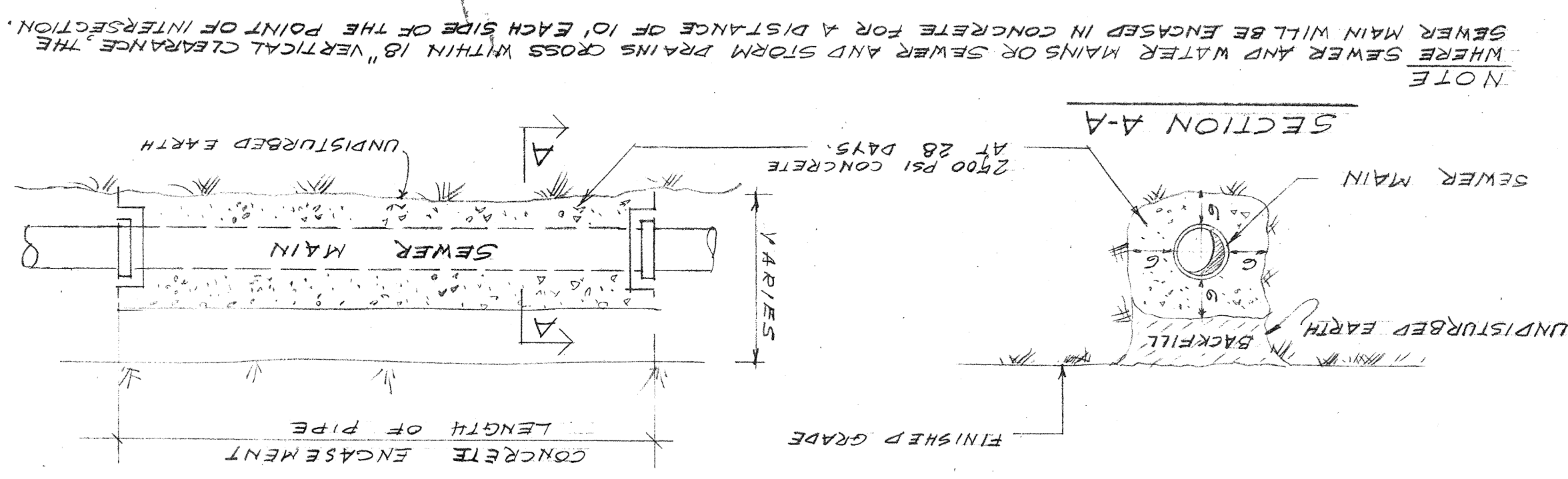
NOTES:

1. Manhole frame and covers to be in accordance with Town of Longport Key Specifications for Water-tight covers.
- 1.55' of 2" Force Main @ -0.10%
- Relocated Yachts moor Clubhouse
- Prefabricate Marine Pumpout Unit MARKLAND 55100E #100 or Approved Equal
- Gas Docks

LEGEND

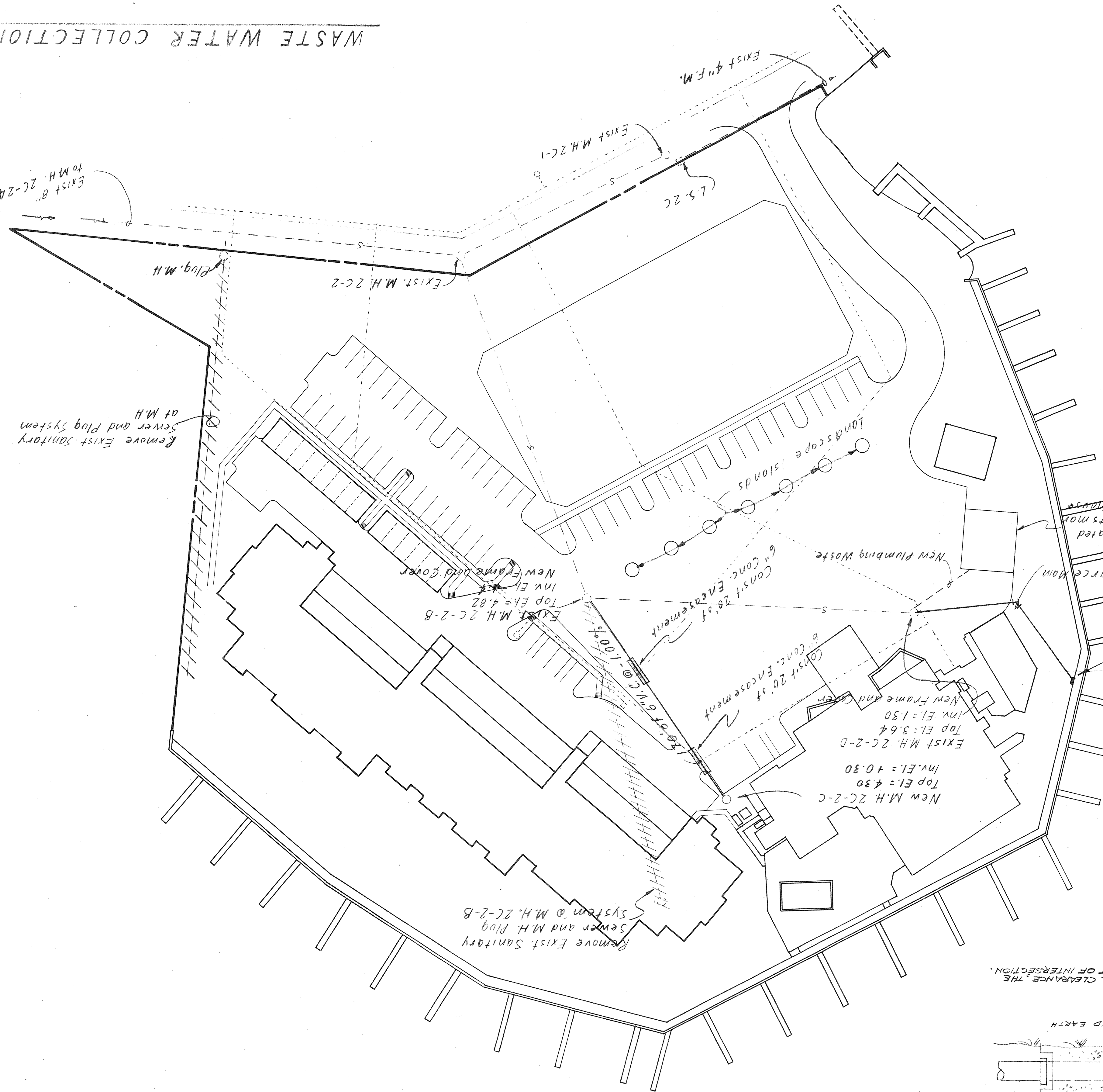
—	NEW SANITARY SEWER
- - -	EXISTING SANITARY SEWER
○	EXISTING MANHOLE
○	NEW MANHOLE
----	WATER LINE
HHHH	SANITARY SEWER TO BE REMOVED

ENCASEMENT DETAILS



NOTE: WHERE SEWER AND WATER MAINS OR SEWER AND STORM DRAINS CROSS WITHIN 18" VERTICAL CLEARANCE, THE SEWER MAIN WILL BE ENCASED IN CONCRETE FOR A DISTANCE OF 10' EACH SIDE OF THE POINT OF INTERSECTION.

WASTE WATER COLLECTION SYSTEM



Scale: 1/4" = 40'

Remove Exist. Sanitary Sewer and Plug System at M.H.

Remove Exist. Sanitary Sewer and M.H. Plug System @ M.H. 2C-2-B