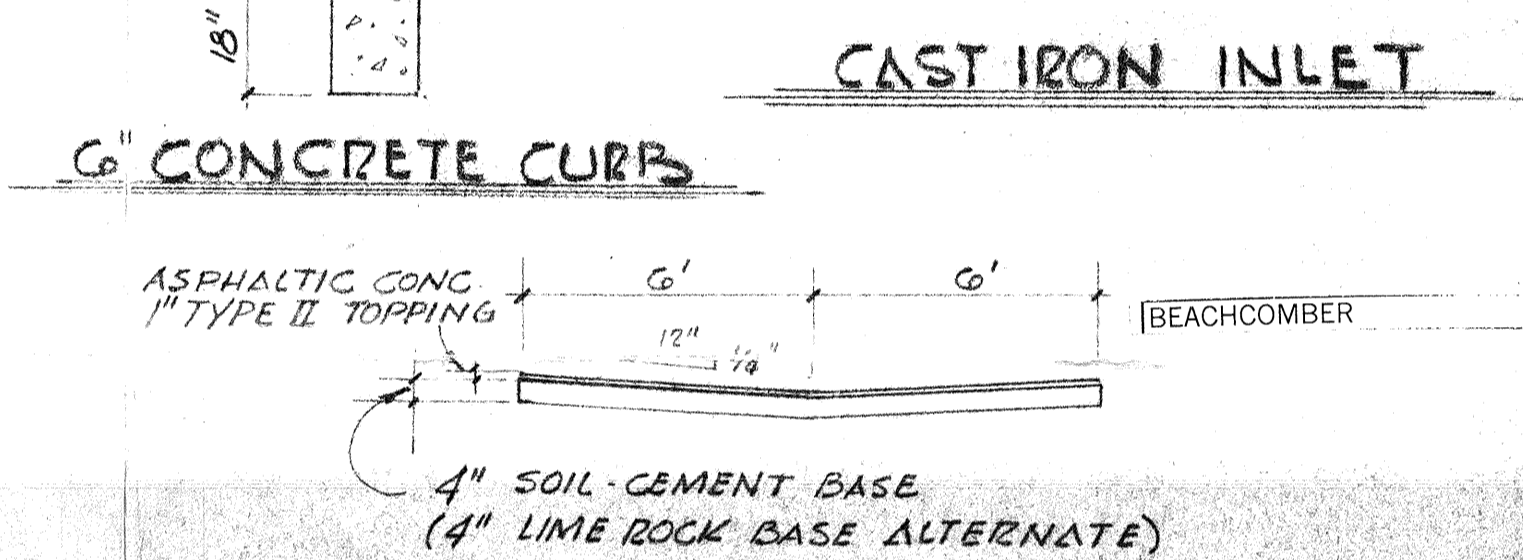
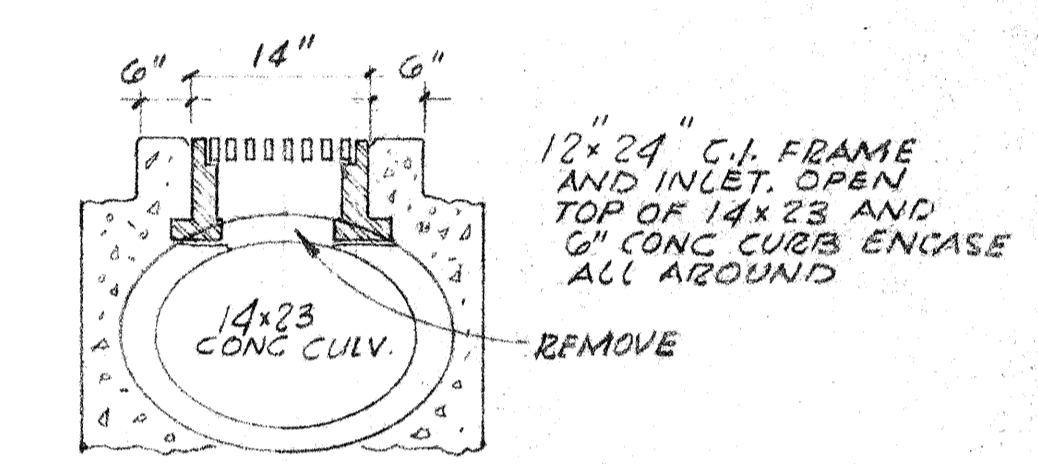
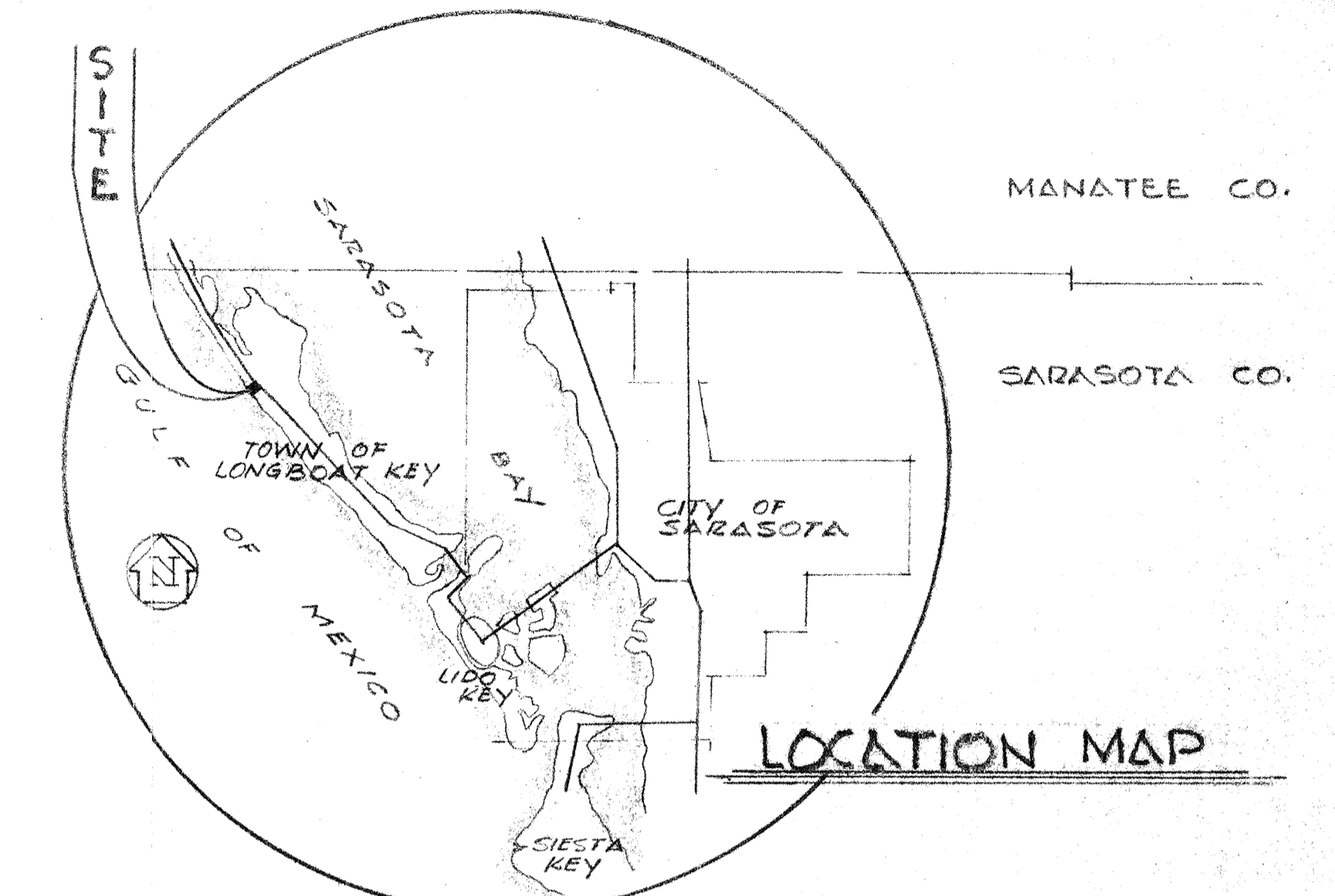
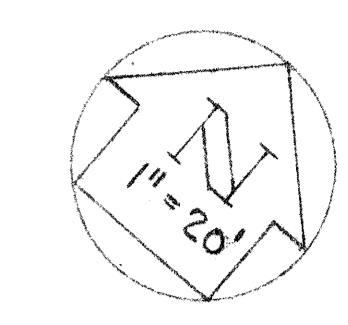
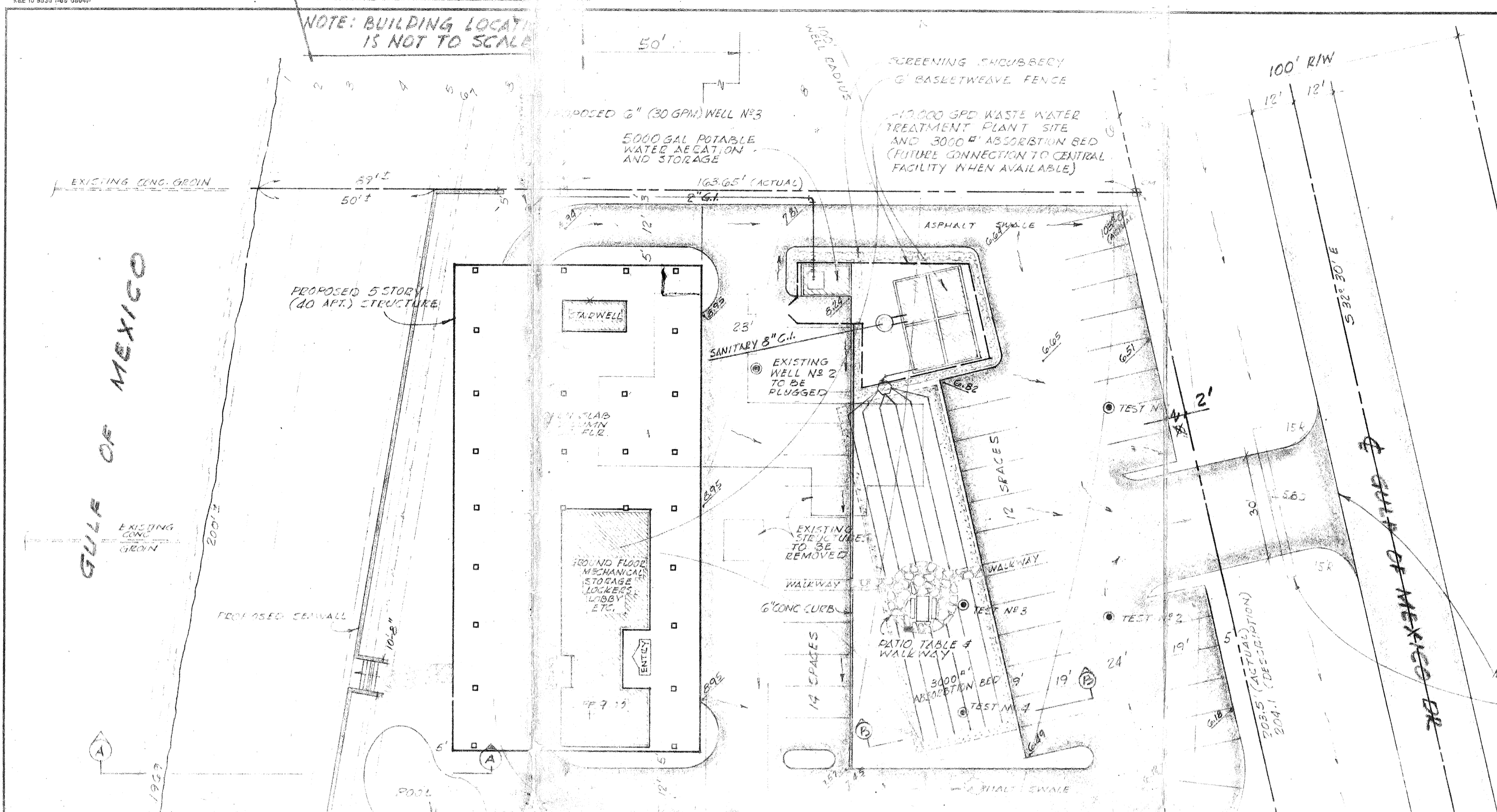
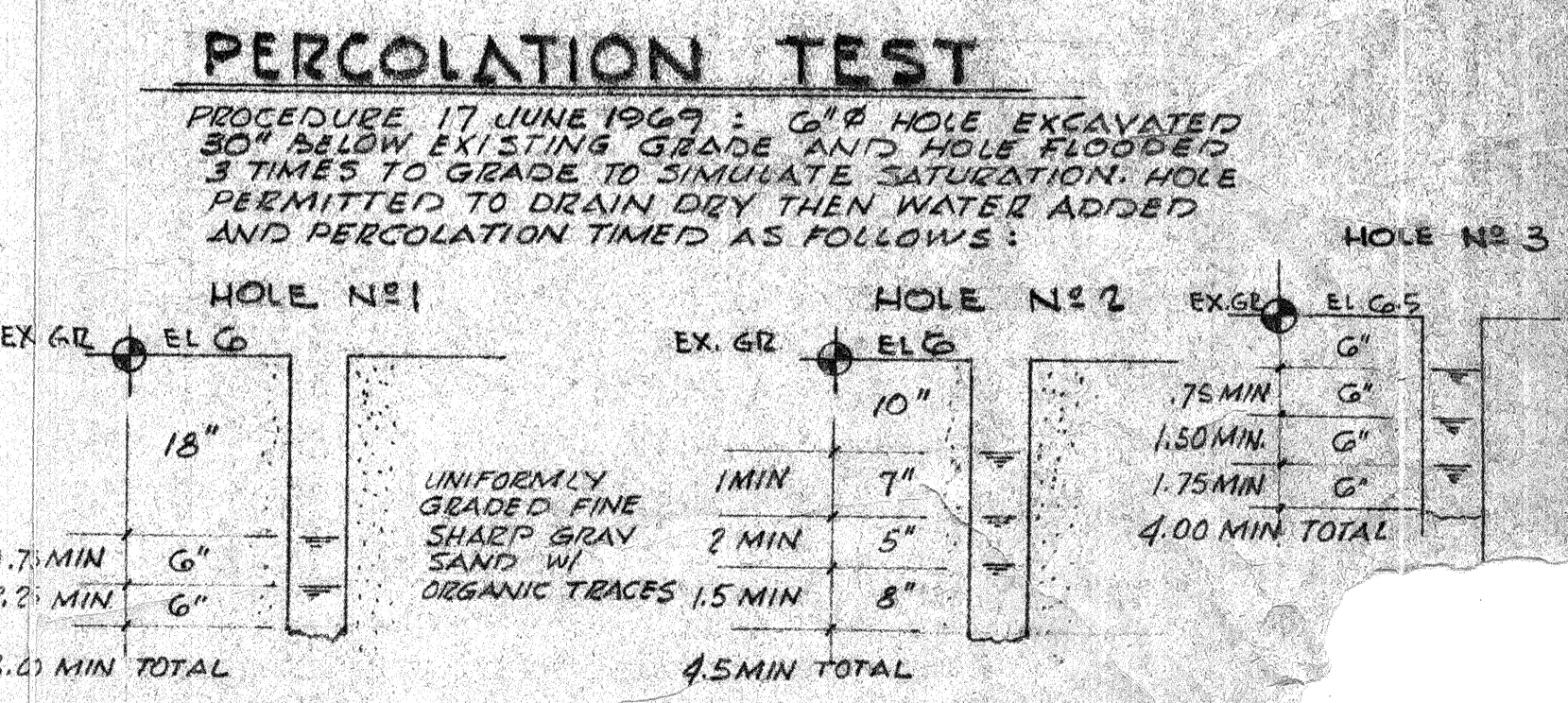


NOTE: BUILDING LOCATION IS NOT TO SCALE



**ROADWAY PARKING AND DRAINAGE DETAILS**



*Beachcomber*

PIPE BED  
DRAIN TILE  
2' 10' FALL  
(SEE PERCOLATION TEST)

NOTE: REV 9/20/69 MOVES BLDG & PAVING 10' EASTWARD & ELEV. FIN. FLR

		<b>PASSALACQUA ENGINEERS</b> CONSULTING ENGINEERS 1670 STICKNEY PT. ROAD MR. JACK O. SYDNEY 2721 GULF TOW 202 PEOPLES BANK BLDG	
REVISION	DATE	DESCRIPTION	BY
10/26/69	REV. DRAWING		DAP
9/20/69	REV. BLDG. LOC. & PAVING		
DATE	SCALE	DESIGN	CUT?
11 JULY 69		NOTED	CUT?
APPROVED BY		DRAWN	CUT?
<i>Carmel Passalacqua</i>		# 1329	
FLA. PE. NO.		CHECKED	

**SITE PLAN**