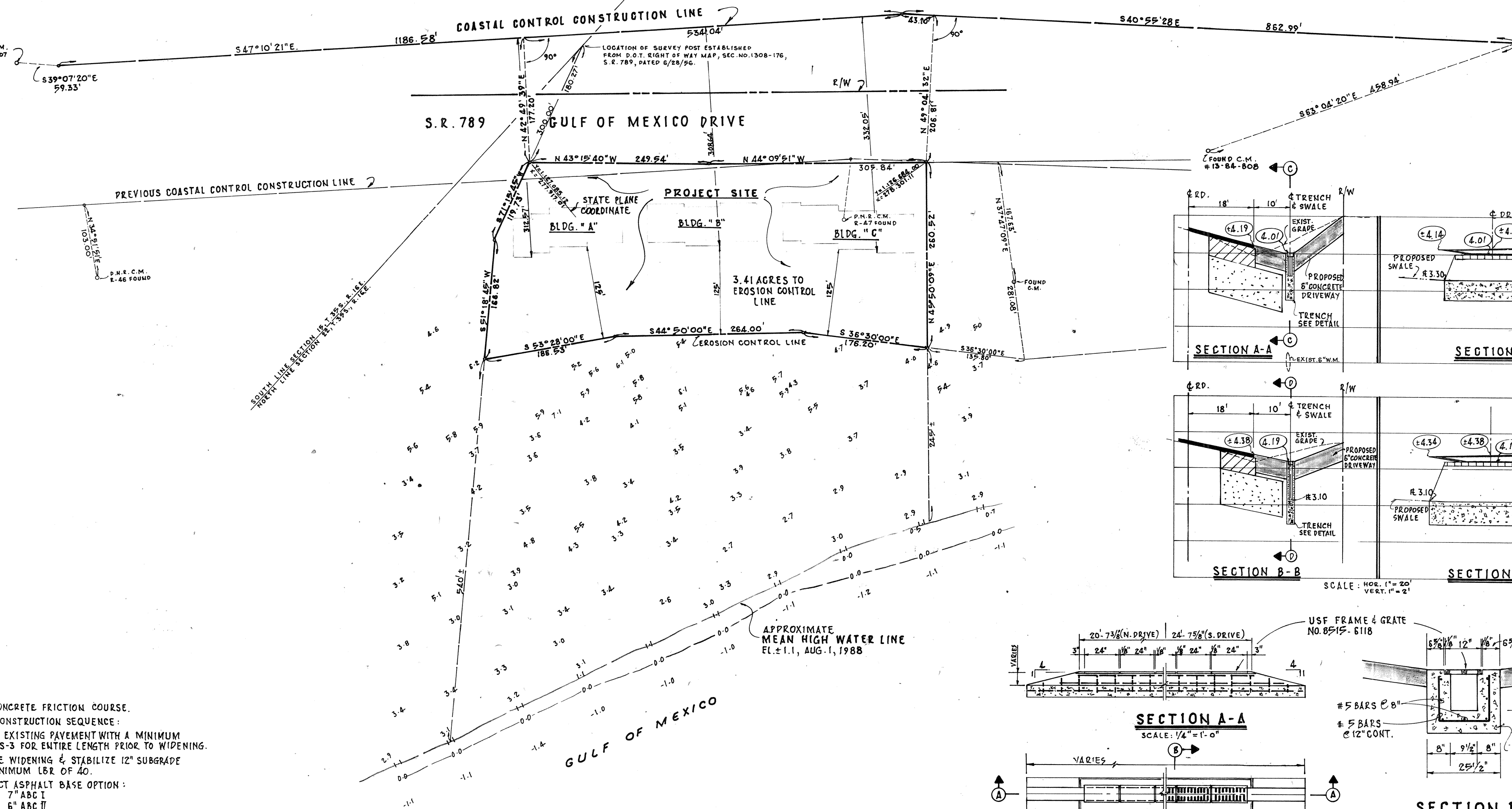


TYPICAL ROAD SECTION

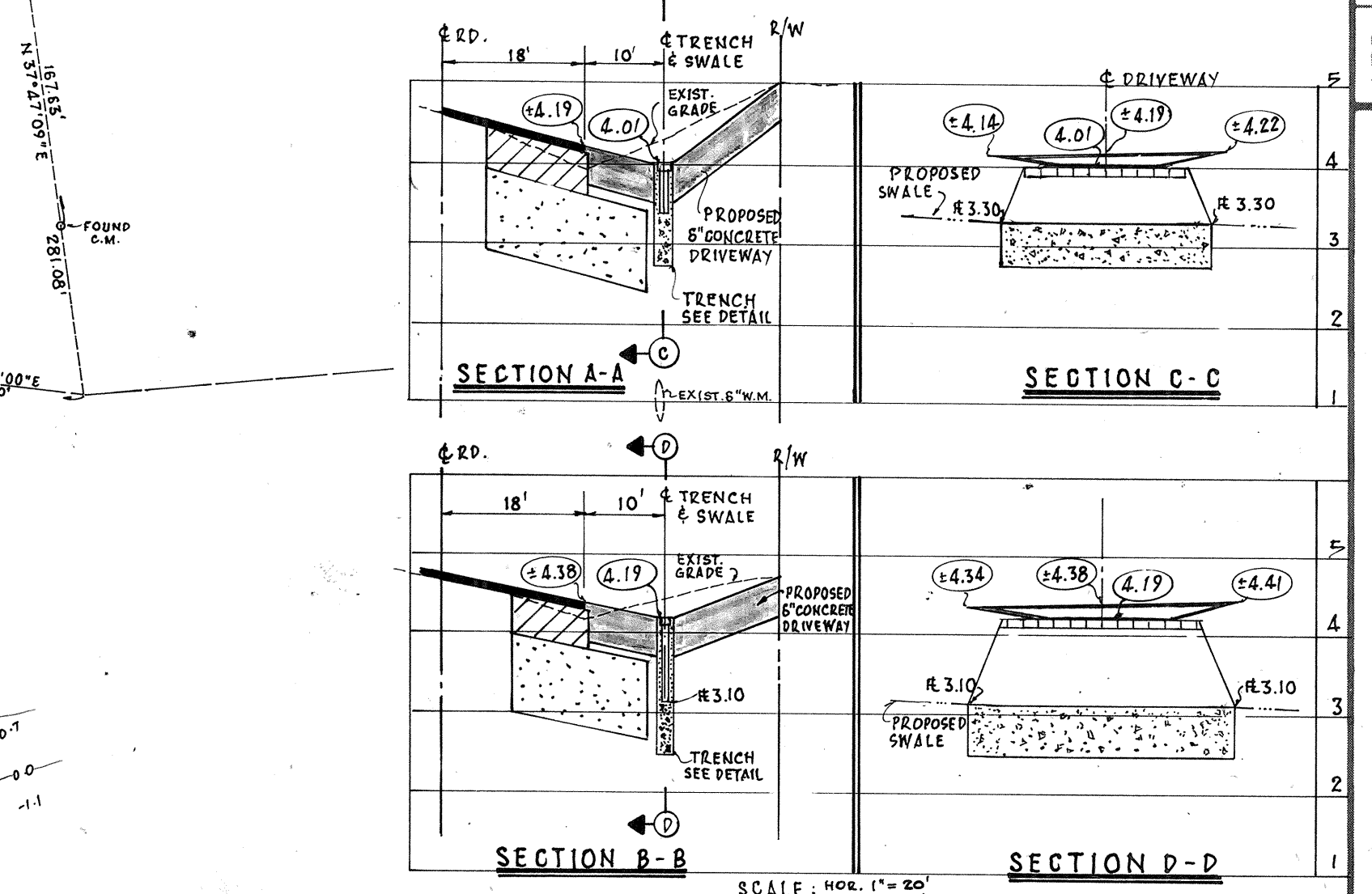
SCALE: HOR. 1"=10'
VERT. 1"=2'

- ASPHALTIC CONCRETE FRICTION COURSE.
PAVEMENT CONSTRUCTION SEQUENCE:
- OVERLAY EXISTING PAVEMENT WITH A MINIMUM 100 LBS S-3 FOR ENTIRE LENGTH PRIOR TO WIDENING.
 - EXCAVATE WIDENING & STABILIZE 12" SUBGRADE TO A MINIMUM LBR OF 40.
 - CONSTRUCT ASPHALT BASE OPTION:
7" ABC I
6" ABC II
5" ABC III
 - PAVE WIDENING WITH 2" TYPE S-1
 - OVERLAY ENTIRE ROADWAY WITH 1" FC-4 FOR LENGTH PROJECT.
 - SOP ALL DISTURBED AREAS.
 - CONCRETE SIDEWALK 4" THICK 3000 P.S.I. @ 28 DAY, FOR DETAILS SEE (3)
- SIDEWALKS SHALL CONSTRUCTED IN ACCORDANCE WITH SEC. 922 OF THE FLORIDA DEPARTMENT OF TRANSPORTATION STANDARD SPECIFICATIONS FOR ROAD AND BRIDGE CONSTRUCTION, 1986.



C.C.C.L. AND M.H.W. SKETCH

SCALE: 1"=100'



TRENCH DETAIL RECORD DRAWING

SCALE: 1/4"=1'-0"

SCALE: 1/4"=1'-0"

6/12/91
M.H.W. Sketch

DESIGNED BY	M.J.V. /c.l.	DATE:	SEPT., 1988	PROJECT NO.	2499
SCALE:	AS SHOWN	CHECKED BY	MILLARD J. JOOPER, P.E.	FL. CERT. NO.	3376P
BY:	RZ/EP	DRAWN BY	E.P.		
REVISION					
GENERAL REVISION					
REVISE TO CORRECT SECTION					
REVISE TO CORRECT SECTION					
REVISE TO CORRECT SECTION					
REVISE TO CORRECT SECTION					

133 SOUTH MCINTOSH RD. SARASOTA, FLA. 33582

CONSULTING ENGINEERS & SURVEYORS

S.R. 789 WIDENING AND C.C.C.L. & M.H.W. SKETCH

FOR: RIVIERA CORPORATION
SMALLY, WELLFORD & NALVEN, Inc.

DRAWING NUMBER

(2)

REVISION

by: M.H.W. 6/12/91