

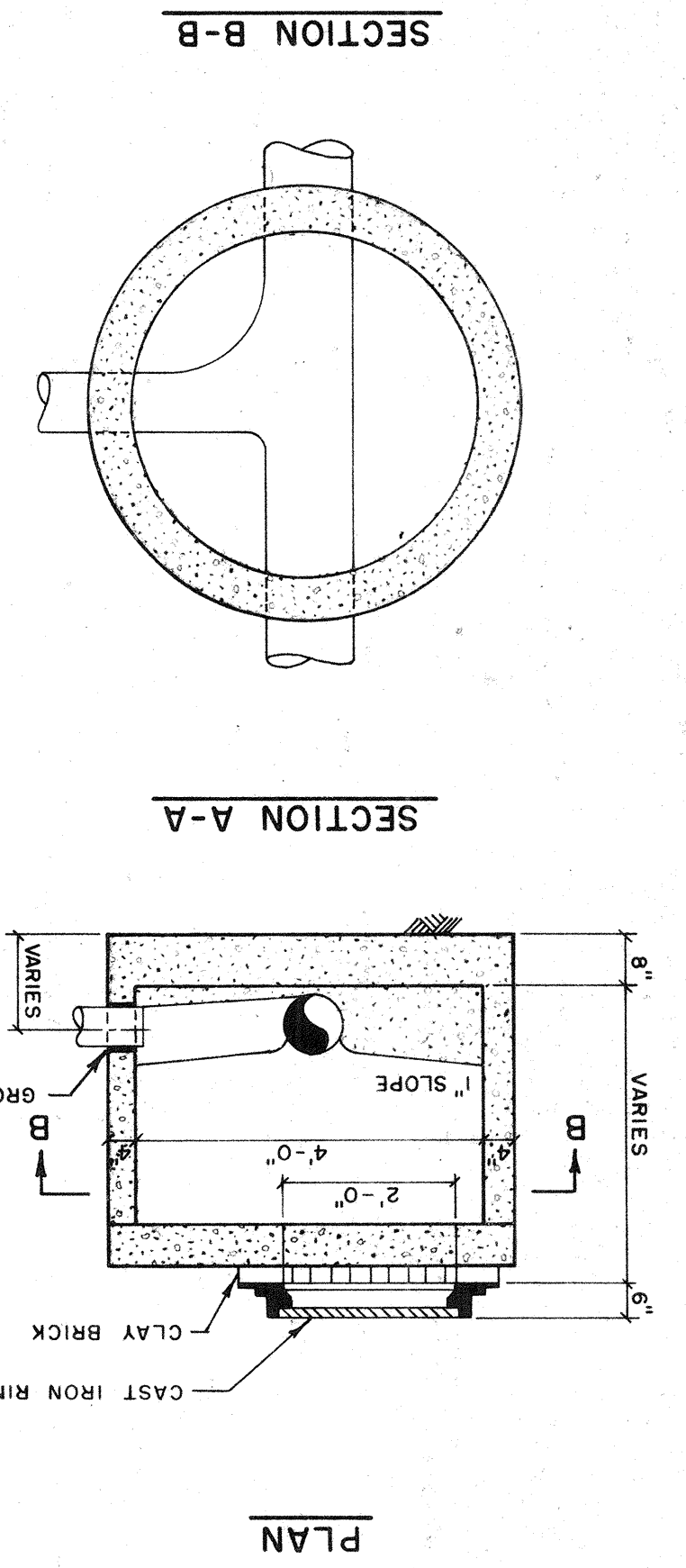
DATE	NOV. 13, 84
SCALE	AS SHOWN
DESIGN	R.A.B.
DRAWN	R.A.B.
CHECK	
APPROVED	

REVIS	DATE	DESCRIPTION	BY	APPROVED BY

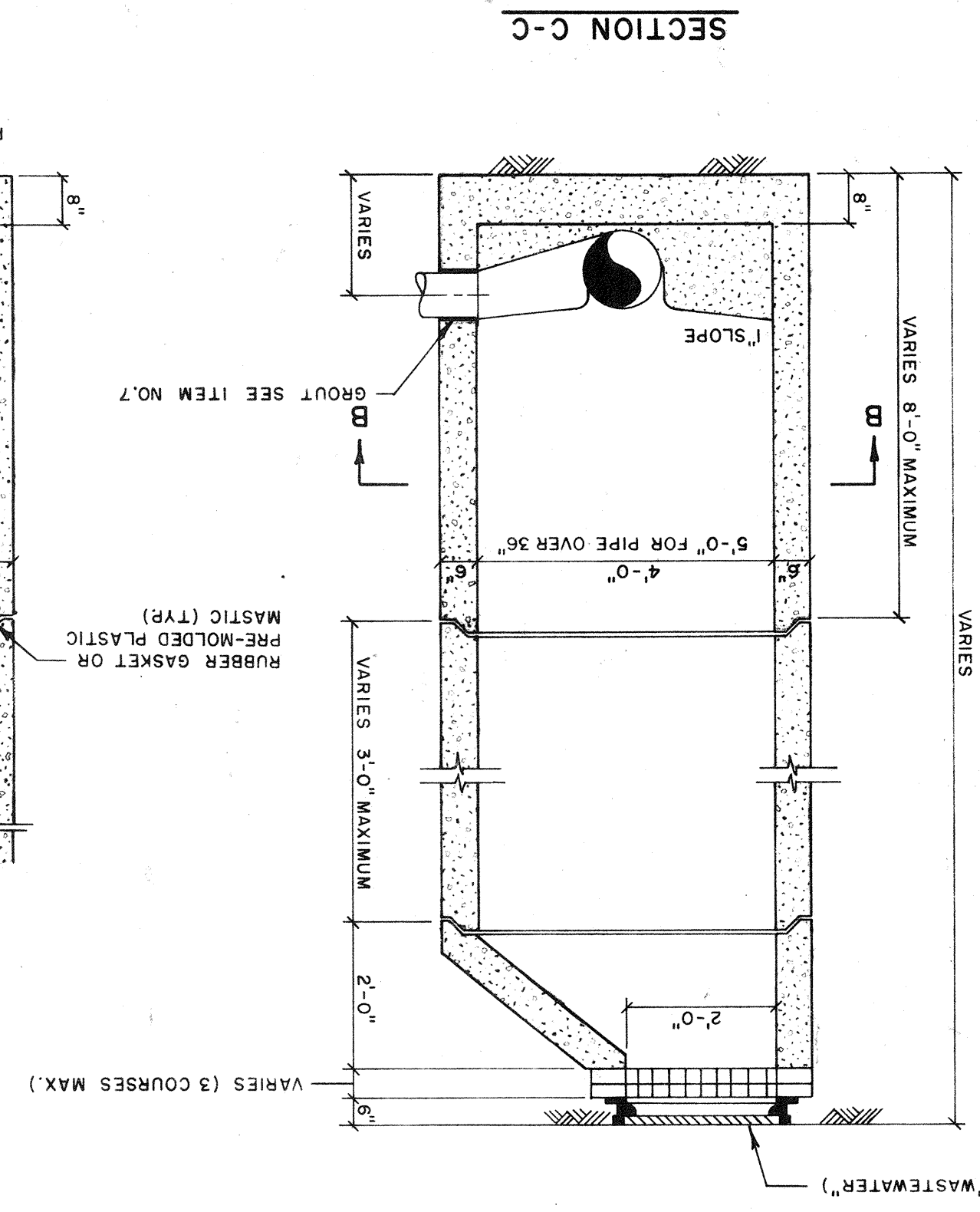
GENERAL NOTES:

1. WHERE WATER & WASTEWATER MAINS CROSS WITH LESS THAN 18" VERTICAL CLEARANCE, THE WASTEWATER PIPE SHALL BE OF EITHER CAST IRON OR CONCRETE ENCASED VITRIFIED CLAY, (20 MIN.) CENTERED ON THE POINT OF CROSSING.
  2. PARALLEL WATER & WASTEWATER MAINS SHALL MAINTAIN A HORIZONTAL SEPARATION OF AT LEAST 10" WHERE PRACTICAL.
  3. WHERE STORMWATER SEWERS CROSS OVER WASTEWATER SEWERS WITH LESS THAN 12" VERTICAL CLEARANCE, THE WASTEWATER PIPE SHALL BE OF EITHER CAST IRON OR CONCRETE ENCASED VITRIFIED CLAY, 10" MINIMUM EITHER SIDE OF CROSSING.
- MANHOLE SPECIFICATIONS:
1. MANHOLES SHALL COMPLY WITH A.S.T.M. SPECS. C-478, LATEST REVISION, "PRECAST REINFORCED CONCRETE MANHOLE SECTIONS".
  2. CONCRETE SHALL BE 4,000 P.S.I./28 DAY MINIMUM STRENGTH, WITH TYPE I CEMENT.
  3. HEAVY DUTY MANHOLE RING (6" HIGH) AND COVER SHALL BE TYPE B (DWG. NO. 240; OLD NO. 24) WITH FRAME & BOLTED COVER (333B) WITH 4 S.S. BOLTS, NEOPRENE GASKET & BLIND PICKHOLE AS MANUFACTURED BY U.S. FOUNDRY CORP., MIAMI, FLORIDA, OR APPROVED EQUAL, WITH THE WORDS "WASTE WATER" CAST INTO THE COVER.
  4. REINFORCING PER A.S.T.M. SPEC. C-478, LATEST REV.
  5. LEVELING BRICKS TO BE CLAY; MORTAR TO BE 2 PARTS CLEAN SAND AND 1 PART CEMENT WITH NO MORE THAN 1/4 PART HYDRATED LIME, WITH JOINTS FULL & STRUCK FLUSH.
  6. NO STEPS SHALL BE USED.
  7. COMPLETELY FILL SPACE BETWEEN PIPES AND MANHOLE WALL WITH CEMENT MORTAR AFTER PIPE IS SET WITH 15LB. EMBECCO PER 100LB. CEMENT.

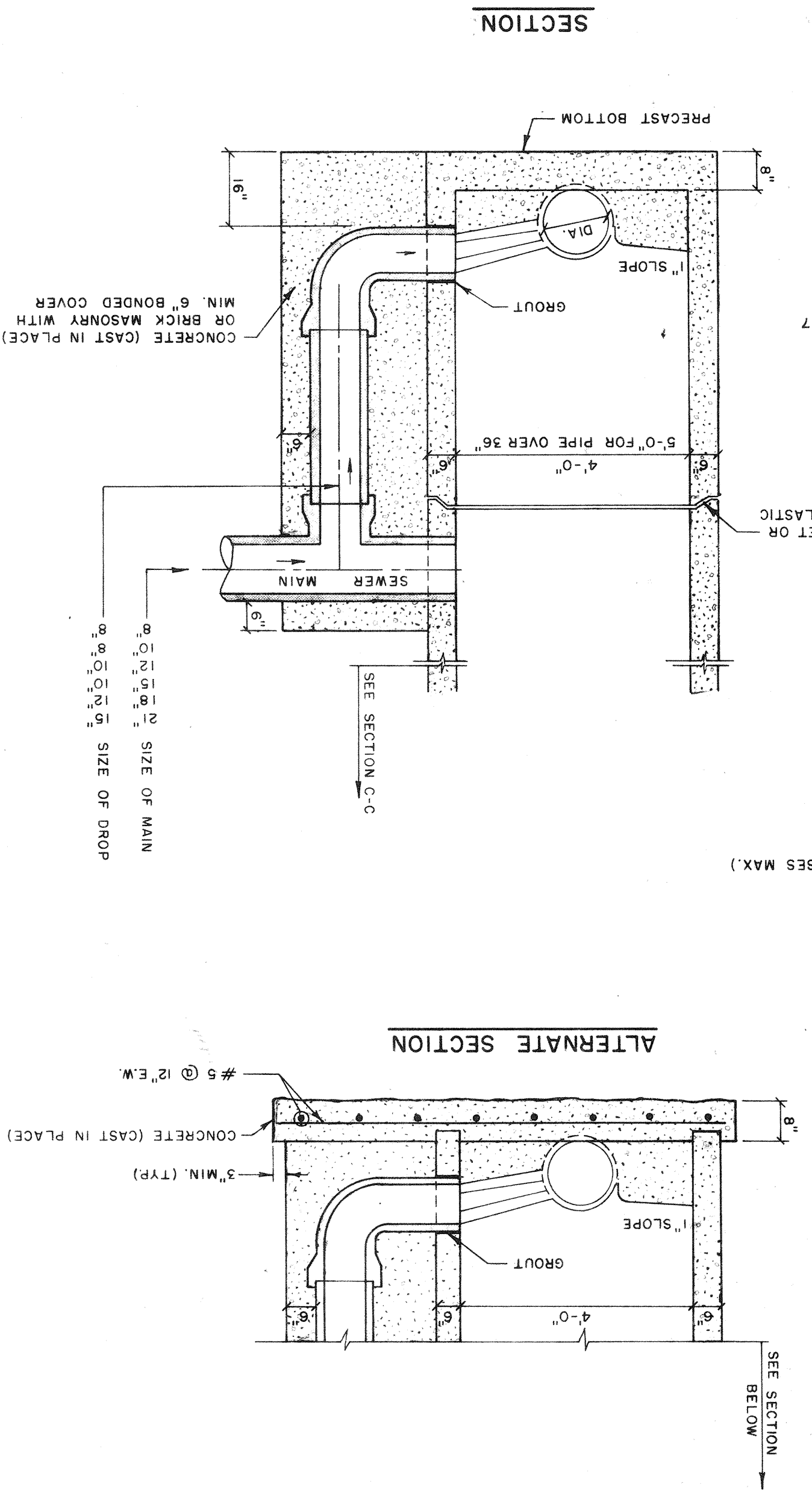
FOR DEPTHS 5'-0" & LESS



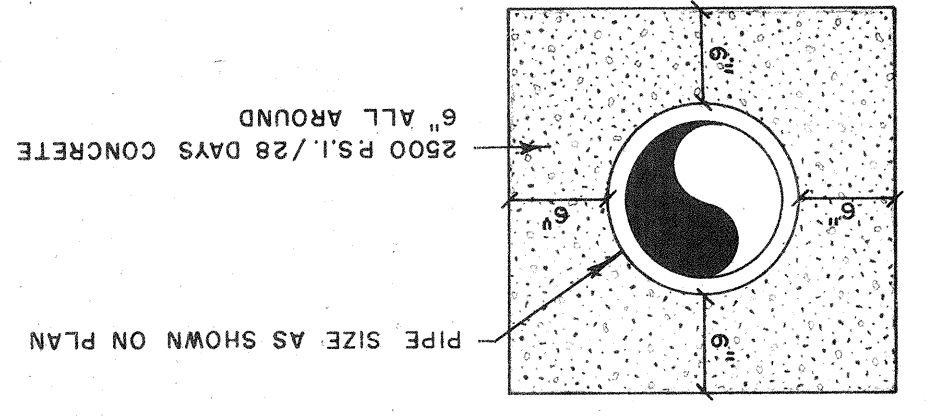
FOR DEPTHS OVER 5'-0"



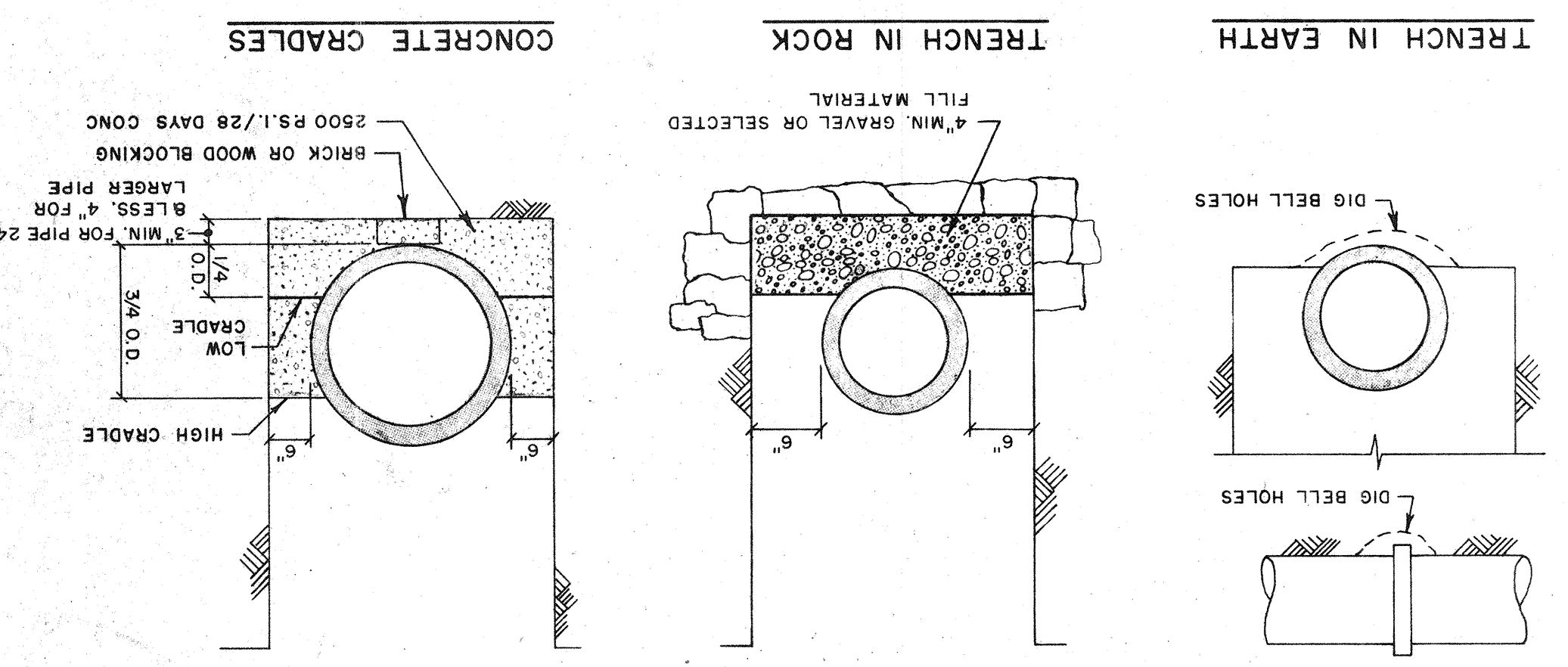
DROP MANHOLE



CONCRETE ENCASEMENT



TYPICAL EXCAVATION & PIPE SETTINGS



TYPICAL SERVICE CONNECTION

