

GULF OF MEXICO

M.H.W. LINE
DATE: 5-11-81

TOWN OF LONGBOAT KEY
150' SETBACK LINE

STATE OF FLORIDA
COASTAL CONSTRUCTION LINE

N 44° 14' 49" W 200.07'

(TW EL. +10.05)

(TW EL. +11.52)

(TW EL. +13.0)

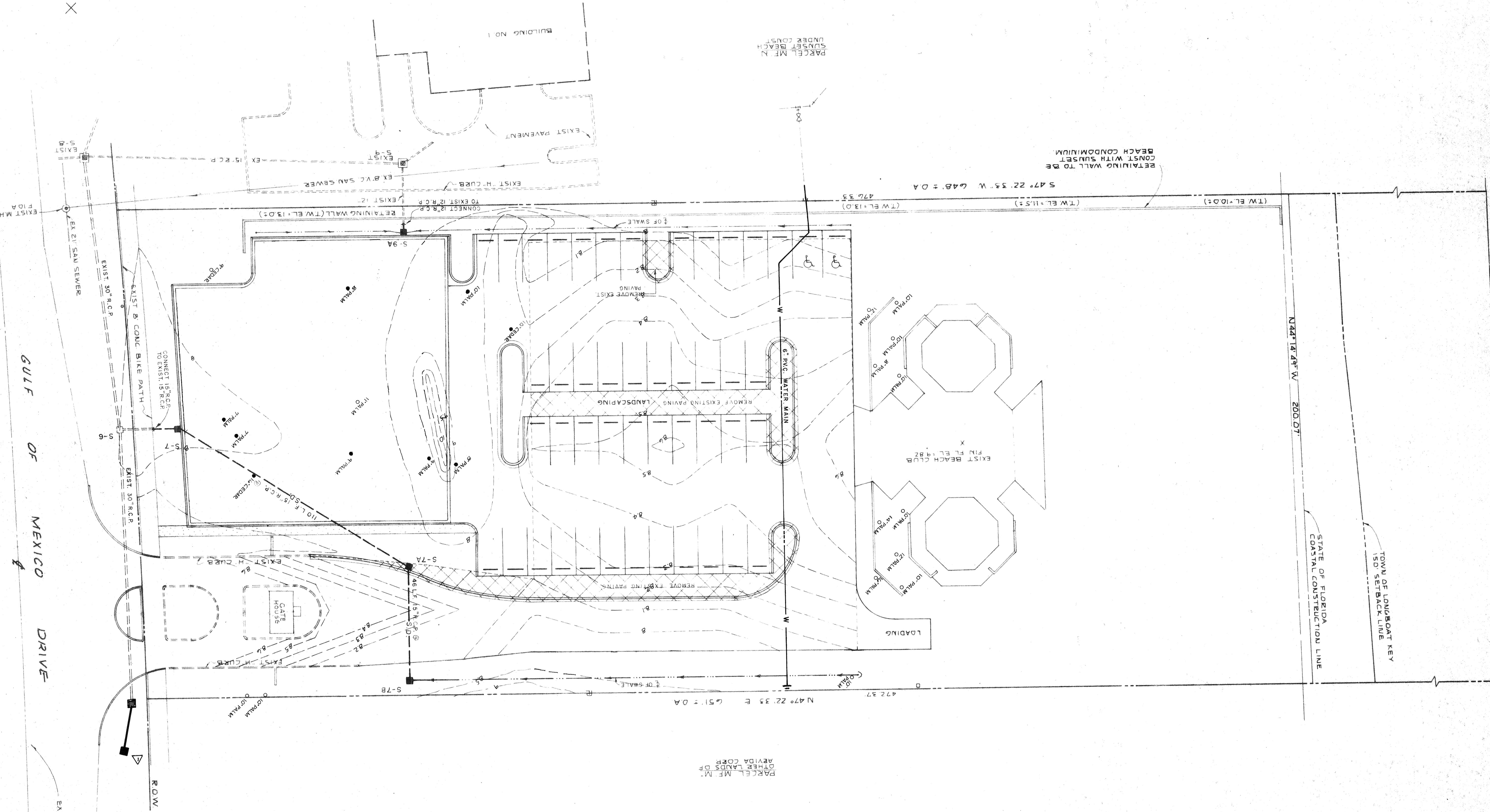
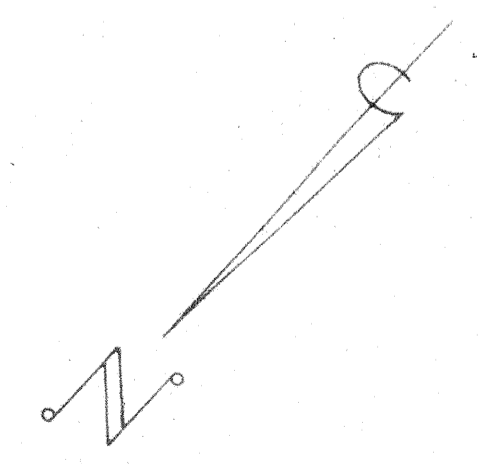
547° 22' 33" W 648' ± 0A

RETAINING WALL TO BE
CONST. WITH SUNSET
BEACH CONDOMINIUM

PARCEL M.F.M.
SUBSET BEACON
UNDER CONSTR.

PARCEL M.F.M.
OTHER LANDS OF
ARVIDA CORP.

NOTE:
TREE REMOVAL PERMIT REQUIRED PRIOR
TO ANY TREE REMOVAL.
TREES TO BE TRANSPLANTED 7- PALM TREES
2- CEDAR TREES
TREES TO BE REPLACED



191-799

LONGBOAT KEY
ARVIDA CORPORATION
BEACH CLUB
TREE PRESERVATION AND RELOCATION PLAN
SARASOTA, FLORIDA

DATE	DESCRIPTION
OCT 18 84	SCALE 1"=20'
F.V.	DESIGN
N.A.L.	CHECK
F.V.	APPROVED

DATE	DESCRIPTION
NOV 13 84	REVISION
	Parking Removed, Grades Altered
F.V.	BY

BENNETT & BISHOP
CONSULTING ENGINEERS & SURVEYORS
SARASOTA, FLORIDA