

8" DIA.(MIN.) 2.5 CCA TIMBER GUARD WRAP  
 PINE PILING JETTED 6' INTO BAY BOTTOM  
 MECHANICALLY DRIVEN TO SETTLE. CUT END  
 CAPPED.

5/4"X6" COMPOSITE DECKING - GREY  
 EDGES ROUTERED SMOOTH CUT AT  
 CENTER LINE OF PILE. OR 2X6 P.T.

(1) 5/8" DIA. HDG CARRIAGE BOLT  
 W/ HDG NUT & WASHER DRILLED  
 THRU PILING.

Storm Damage - Replace Dock  
 Same Footprint. Work to  
 comply with FBC 2023  
 Building Code

2X8 PINE HEADER  
 0.60 CCA TREATED  
 FOR SPANS < 8'0"

DOUBLE BOLT THRU EACH HEADER  
 FOR SPANS > 6'0"  
 SINGLE BOLT FOR SPANS < 4'0"



8" DIAMETER 2.5 CCA  
 MARINE PILING (TYP.)

SUBMERGED BOTTOM

( VARIES )

72" MINIMUM DEPTH  
 IMPASSABLE ROCK.

**TYPICAL DOCK SECTION**

SQUARE OR RADIUS CUT  
 AROUND PILE - OWNERS  
 PREFERENCE

(2) 2X8 P.T. HEADERS  
 (1) P.T. HEADER IF  
 NO OVERHANG

#12 STAINLESS STEEL SQ.  
 DRIVE DECK SCREWS  
 ( 2 ) PER STRINGER

**TOP/PLAN VIEW**

**TOP FRAMING VIEW**

MELLA GROUP & PLANNING, LLC.  
 2207 89th. STREET N.W.  
 BRADENTON, FL. 34209

PIERRE M. VALLES, P.E.  
 5470 E. BUSCH BLVD. SUITE 200  
 TAMPA, FLORIDA 33617  
 FLORIDA LICENSE No. P.E.# 66356

DRAWN BY: K.A.M.



THIS ITEM HAS BEEN ELECTRONICALLY  
 SIGNED AND SEALED BY PIERRE M. VALLES  
 RE. USING A DIGITAL SIGNATURE AND DATE  
 PRINTED COPIES OF THIS DOCUMENT ARE  
 NOT CONSIDERED SIGNED AND SEALED AND  
 THE SIGNATURE MUST BE VERIFIED ON ANY  
 ELECTRONIC COPIES.

Digitally

Signed by  
 Pierre M  
 Valles

Date:

2023.10.13

07:23:04

04:00'

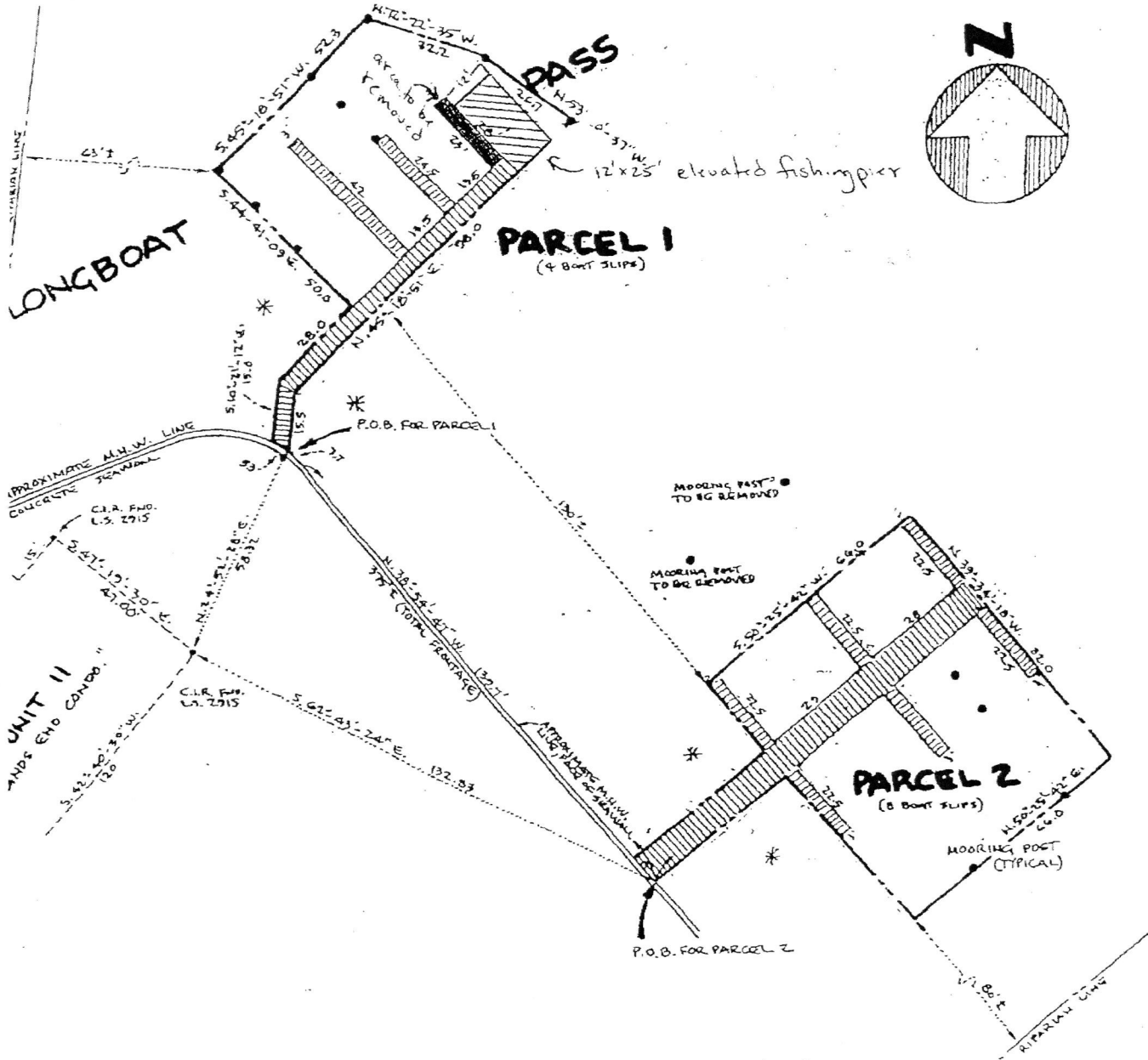
DIGITAL SEAL REQUIRED

ATKIN MARINE SERVICES  
 5573 MERRIMAC DRIVE  
 SARASOTA, FLORIDA

STANDARD DOCK DETAIL

**D.E.P.**  
 DEC 10 2004  
 Southwest District Tampa

**LANDS END EXHIBIT A**



**A SPECIAL PURPOSE SURVEY**

TO SHOW LOCATION OF EXISTING DOCK IN LONGBOAT PASS (SARASOTA BAY) ADJACENT TO LANDS END CONDOMINIUM, RECORDED IN CONDOMINIUM BOOK 7, PAGE 81, OF THE PUBLIC RECORDS OF MANATEE COUNTY, FLORIDA. LYING AND BEING IN SECTION 15, TOWNSHIP 35 SOUTH, RANGE 16 EAST, MANATEE COUNTY, FLORIDA.