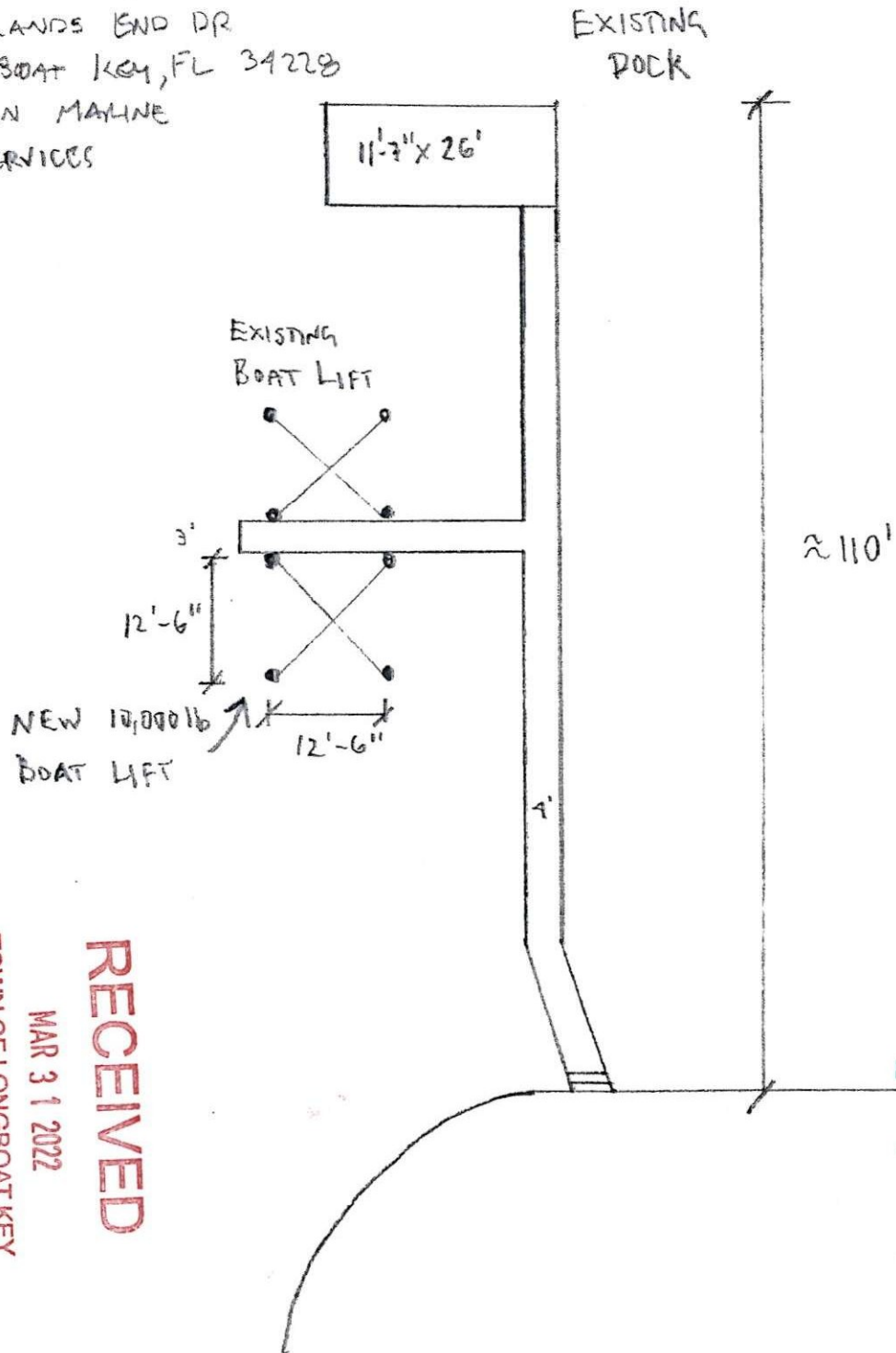


PATRICK BEAVERS
749 LANDS END DR
LONGBOAT KEY, FL 34228
ATKIN MAHNE
SERVICES

31 MAR 22



Permit # PB22-0322
REVIEWED FOR CODE COMPLIANCE
LONGBOAT KEY BUILDING DEPT.

APR - 6 2022

APPROVED

Reviewer: STAN

BLDG. PERMIT PLANS
FILE COPY OF RECORD

Longboat Key Planning, Zoning & Building MHWL
Approved for Zoning:
For Statement of
Zoning Compliance Only

[Signature] 4/17/22
Name Date

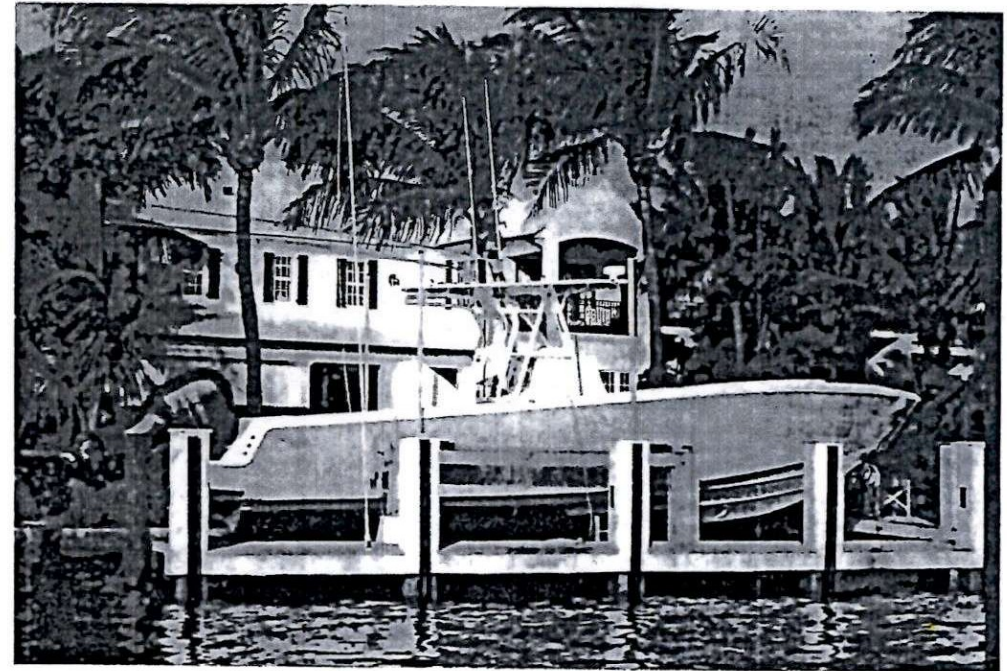
RECEIVED

MAR 31 2022

TOWN OF LONGBOAT KEY
Planning, Zoning & Building



4-Post Boat Lifts



- All Aluminum and Stainless Steel Construction
- Available in Multiple Drive Configurations including:
 - Direct Drive (no belts or chains)
 - Sealed Gearbox Belt Drive
 - Ultra Fast Direct Drive (G3)
 - Marine Duty Stainless Steel Motors
- "Quick Adjust" Stainless Steel Cables
- Heavy Duty, easily adjustable Guide Poles
- Extruded Aluminum Bearing Blocks
- Welded Construction (not bolted)
- Aluminum Pulleys with Stainless Steel Axle Bolts & Grease Fittings
- Optional SEArmor Corrosion Resistant Package
- 10 Year Limited Warranty

Additional Options:

- Wireless Remote Control
- Limit Switch with Auto Stop
- Aluminum Bunks (Up to 20,000 lbs.)

***See our "Complete list of Other Accessories"

Specifications

Size	Top Carrier Dimensions	Lifter Beam Dimensions	Horse Power	Volt and Amperage	Cable Size and Length	Vertical Travel	Bunks	Minimum Pile Size
4,500 lb.	5" x 12' 6" Channel	6" x 11'0" I-Beam	(2) 3/4 HP Stainless Steel*	120V/30A 240V/20A	5/16" x 20' Stainless Steel	12'+	3" x 8" x 12' Carpeted Bunks	(4) 8" Pilings
7,000 lb.	5" x 12' 6" Channel	6" x 12'0" I-Beam	(2) 1 HP Stainless Steel*	120V/30A 240V/20A	5/16" x 20' Stainless Steel	12'+	3" x 8" x 12' Carpeted Bunks	(4) 8" Pilings
10,000 lb.	6" x 12'6" Channel	8" x 12'6" I-Beam	(2) 3/4 HP Stainless Steel*	120V/30A 240V/20A	5/16" x 32' Stainless Steel	12'	3" x 8" x 12' Carpeted Bunks	(4) 8" Pilings
13,000 lb.	7" x 12'6" Channel	8" x 12'6" I-Beam	(2) 1 HP Stainless Steel*	120V/30A 240V/20A	5/16" x 32' Stainless Steel	12'	3" x 10" x 12' Carpeted Bunks	(4) 8" Pilings
16,000 lb.	7" x 12'6" Channel	10" x 14' I-Beam	(2) 1 HP Stainless Steel*	240V/20A	5/16" x 32' Stainless Steel	12'	3" x 10" x 14' Carpeted Bunks	(4) 10" Pilings
20,000 lb.	8" x 12'6" Channel	10" x 14' I-Beam	(2) 1 HP Stainless Steel*	240V/20A	5/16" x 48' Stainless Steel	12'	3" x 10" x 14' Carpeted Bunks	(4) 10" Pilings
24,000 lb.	8" x 15'0" Channel	12' x 15' I-Beam	(2) 1 HP Stainless Steel*	240V/20A	5/16" x 48' Stainless Steel	12'	3" x 12" x 18' Carpeted Bunks	(4) 10" Pilings
30,000 lb. (w/remote)	8" x 15'0" Channel	12" x 16' I-Beam	(4) 1 HP Stainless Steel*	240V/30A	3/8" x 50' Stainless Steel	12'	3" x 12" x 20' Carpeted Bunks	(4) 10" Pilings

*Stainless Steel Motors are Standard on all Direct Drive and H2 High Speed Direct Drive Lifts Only

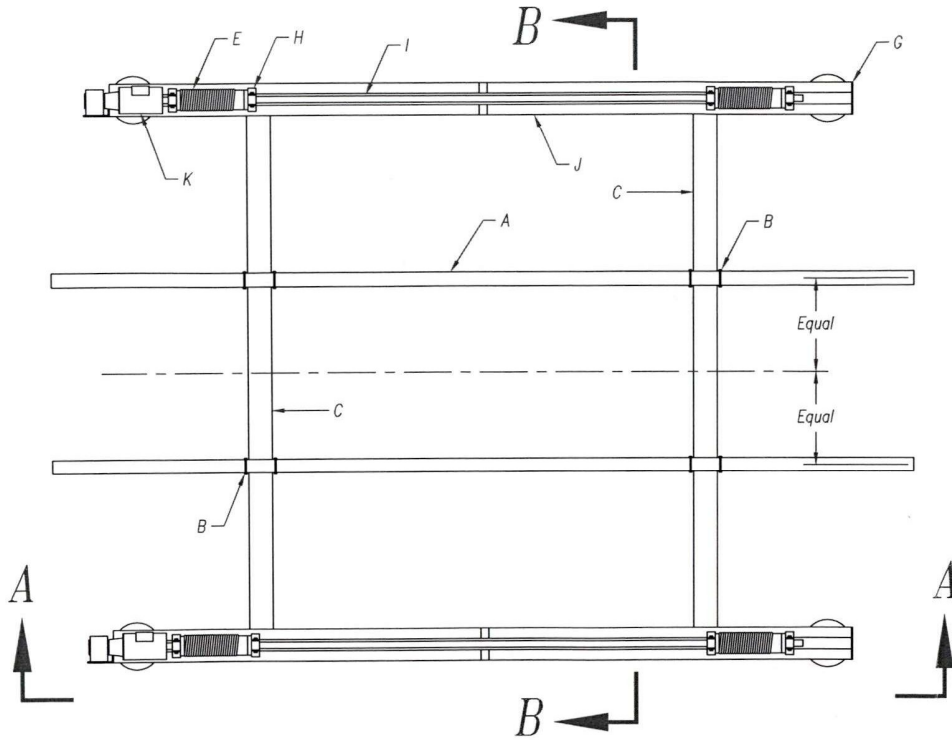
TOWN OF LONGBOAT KEY
 Planning, Zoning & Building
 MAR 31 2022

RECEIVED

BLDG PERMIT PLANS
 FILE COPY OF RECORD

General Notes:

- Design in accordance with Florida Building Code, 7th Edition (2020).
- This lifting structure has been designed to withstand wind loads associated with speeds of $V(ult) = 180$ MPH, (3 Second Gust) Exposure 'D' without a boat on the lift per ASCE 7-16 using above ground sign/wall method. The lifting structure including boat has been designed to withstand wind speeds of $V(ult) = 73$ MPH in Exposure 'D'.
- Boats shall not be stored on lift during high wind events.
- Do not scale drawings for dimensions.
- Licensed Contractor to verify location of existing utilities prior to commencing work.
- The Licensed contractor to install and remove all shoring and bracing as required for the proper installation of the work.
- Licensed Contractor to obtain all permits as necessary from all Local, State, and Federal agencies.
- Aluminum: Material 6061 T6 Aluminum, all welds are min. $\frac{1}{4}$ " full fillet weld using 5556 filler alloy, all welding must conform to AISC Steel Construction Manual currently adopted edition as inspected and verified by others. The contractor is responsible to insulate aluminum members from dissimilar metals to prevent electrolysis.
- Aluminum members in contact with concrete and wood shall be protected by "Koppers Bituminous Paint" or Polyethylene Tape UHMW (ultra high molecular weight). 11.7 mils (0.30 mm) min. total thickness in accordance with current Florida Building Code.
- All anchors to be Hilti Brand or Approved Equal. All bolts shall be hot dipped galvanized or stainless steel & meet the requirements of ASTM A304 with hardened washers and hex nuts. Washers shall be used between wood & bolt head & between wood & nut. Where generic fasteners are labeled in details, capacities shall be equal to or greater than Hilti Kwik Bolt II or Red Head thru bolts SAE Grade 5 or better. Embedment depths specified herein are depths into solid substrate and do not include thickness of other finishes.
- MW Engineering has no control of the manufacturing, performance or installation of this product. These generic plans were engineered in accordance with accepted engineering practices and data provided by the manufacturer.
- Piles shall be driven min. 8' or refusal and sufficiently penetrated into sand or rock strata to support lift capacity, weight and loads.
- Each pile to carry commensurate load I.E. 1/4th lift capacity for 4-post lift (Factor of Safety of 1.5)
- Allowable minimum compression pile capacity of 5 tons.
- The contractor of record shall verify pile type, installation and driving in compliance with FBC 7th ED (2020)
- Sub-surface conditions can vary greatly.



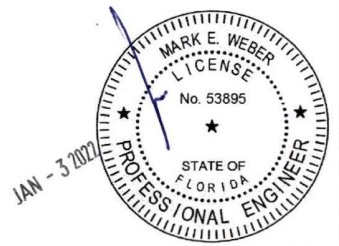
Plan View
Scale: $\frac{3}{8}'' = 1'-0''$

RECEIVED

MAR 31 2022

TOWN OF LONGBOAT KEY
Planning, Zoning & Building

BLDG. PERMIT PLANS
FILE COPY OF RECORD

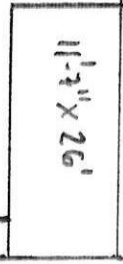


DATE	NOTES/REVISIONS	NOT VALID UNLESS SIGNED WITH ORIGINAL ENGINEER'S SIGNATURE AND SEAL	MW, ENGINEERING, INC 902 NE 1 Street Suite #2 Pompano Beach, Florida 33060 Ofc: 754-333-0877 WWW.MwEngineering.net	Proposed 4 - Post Boat Lifts 4,500 lb to 24,000 lb	NEPTUNE BOAT LIFTS 228 SW 21 Terrace Fort Lauderdale, Florida 33312 Phone: 954-524-3616 Fax: 954-524-3604	SCALE: 3/2
01/07/2018	Changed FBC Note					DATE: 05.12.2015
						DRAWN BY: WRT
		MARK E. WEBER, P.E. LICENSE #53895 CA 30702				CHECKED BY: WM
						JOB No: Elevator 32.dwg
						Sheet 1 of 3

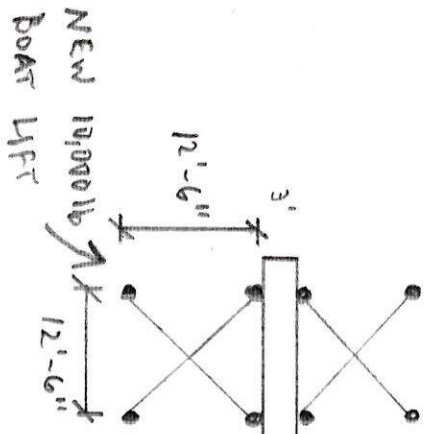
31 MAR 22

PATRICK BEWERS
749 LAWNS END DR
LONGBOAT KEY, FL 34228
ATTN: MARINE
SERVICES

EXISTING
DOCK



EXISTING
BOAT LIFT



~ 110'

4'

MHWL

RECEIVED
MAR 31 2022
TOWN OF LONGBOAT KEY
Planning, Zoning & Building