

NOTE:
ELEV. 4'-0" IS
EQUAL TO 95'
AMSL ON CIVIL
DOCUMENTS

NOTE:
ALL METAL
BELOW DECK
SHALL BE SS

NOTE:
ALL METAL
BELOW DECK
SHALL BE SS

ENTRY STAIR SECTION

5
A-4 3/8" = 1'

William E. Maddox
1/10/95

PROJECT NO.:	93/012/02
DATE:	1/9/95
DRAWN BY:	DFO
CHECKED BY:	WET
SCALE:	3/8" = 1'-0"
SHEET NO.:	

SK-2

DURANTE COMMUNITY PARK

MADDOX
&
ASSOCIATES
ARCHITECTS

ARCHITECT'S SUPPLEMENTAL INSTRUCTIONS

Owner
Architect
Contractor
Field
Other



PROJECT: Joan M. Durante Community Park
(name, address) Longboat Key, FL

ARCHITECT'S SUPPLEMENTAL
INSTRUCTION NO.: 3

OWNER: Town of Longboat Key

DATE OF ISSUANCE: 01/09/95

TO: Woodruff and Sons, Inc.
(contractor) P.O. Box 10127
Bradenton, FL 33507

ARCHITECT: Maddox & Associates Architects, P.A.
1266 First Street Suite 9
Sarasota, FL 34236

CONTRACT FOR: General

ARCHITECT'S PROJECT 93012.02

The Work shall be carried out in accordance with the following supplemental instructions issued in accordance with the Contract Documents without change in Contract Sum or Contract Time. Proceeding with the Work in accordance with these instructions indicates your acknowledgement that there will be no change in the Contract Sum or Contract Time.

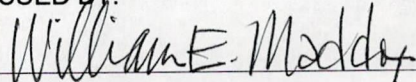
Description:

1. Berm elevations indicated on sheets L-1, L-2 and L-3 shall be revised to match elevations indicated on C-5.
2. Where slope of berms adjacent to lake banks are steeper than 1:4, adjust slope to be continuous from MHWL to top of berm at 1:4 slope.
3. Relocate west end of west berm to open area as discussed at site meeting on 1/3/95.
4. Path from southwest parking spaces around to north east parking spaces is to be concrete with shell topping as indicated on L-1 and L-3 and is not a shell path as indicated on C-5.
5. Move 1 parking space from northeast parking area to southwest area per attached sketch SK-5.
6. Move 2 parking spaces from southeast parking area to southwest area per attached sketch SK-5.
7. Dimensions of parking aisle and handicapped parking space are indicated on attached sketch SK-5.
8. Anchorage of guardrails to columns in Welcome Center Pavilion is indicated on attached sketch SK-4.
9. Operable security shutter at entry stairs and handicapped ramp to be narrower to avoid handrails per attached sketch SK-3.

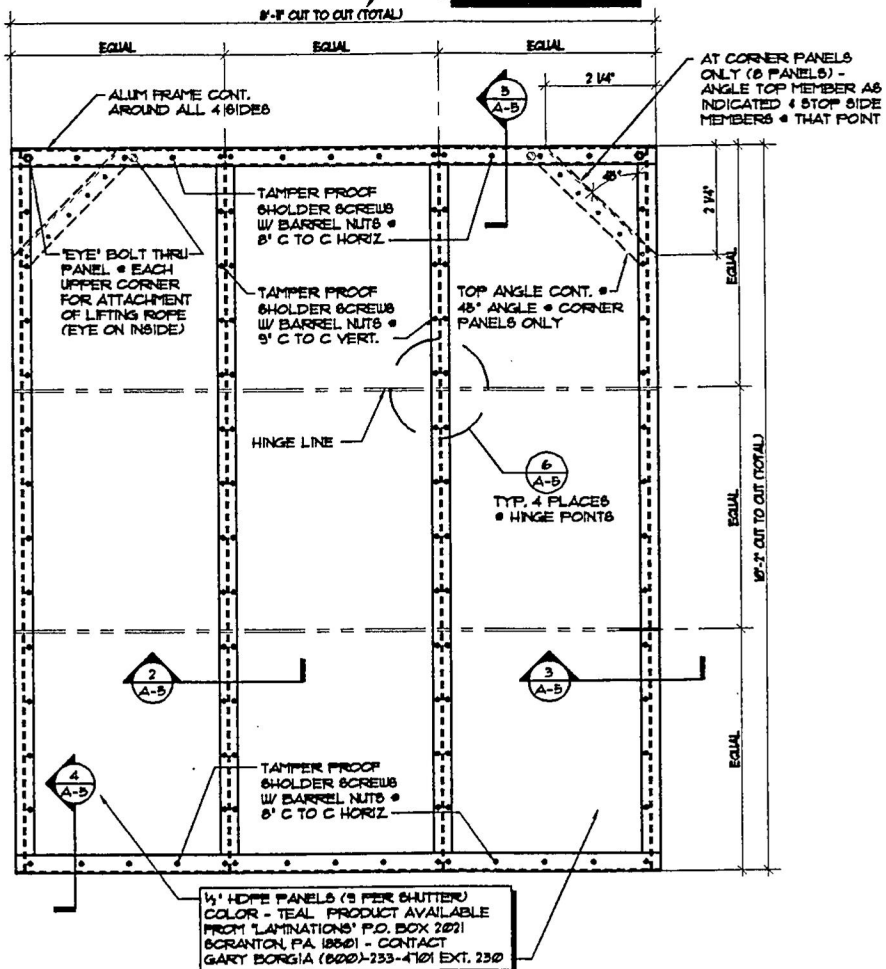
Attachments:

SK-3, SK-4, SK-5

ISSUED BY:


(Architect)

NOTE:
AT ENTRY STAIRS
AND H/C RAMP PANEL
WIDTH SHALL BE 8'-0" DUE TO HAND RAILS.



OPERABLE SECURITY SHUTTER FRAME - (12)

1
A-B SCALE: 3/8" = 1'-0"

MADDOX
&
ASSOCIATES

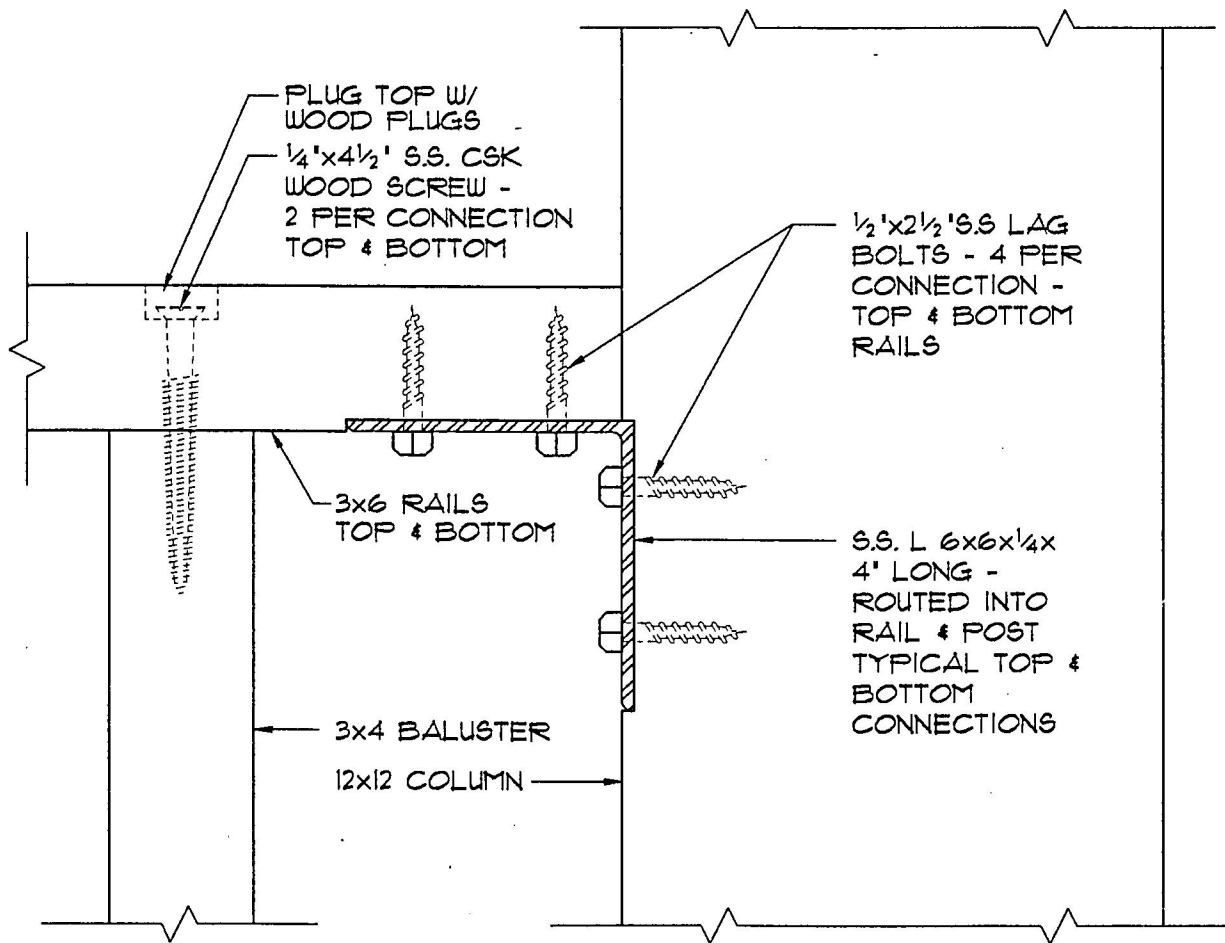
ARCHITECTS

DURANTE PARK

PROJECT NO.: 23012.02
DATE: 1/8/05
DRAWN BY: DFC
CHECKED BY: WEH
SCALE: 3/8" = 1'-0"
SHEET NO.:

SK-3

NO. DATE REVISION



HAND RAIL TO COLUMN CONNECTION

SCALE: 3"=1'-0"

William E. Maddox
1/10/95

MADDOX
&
ASSOCIATES
ARCHITECTS

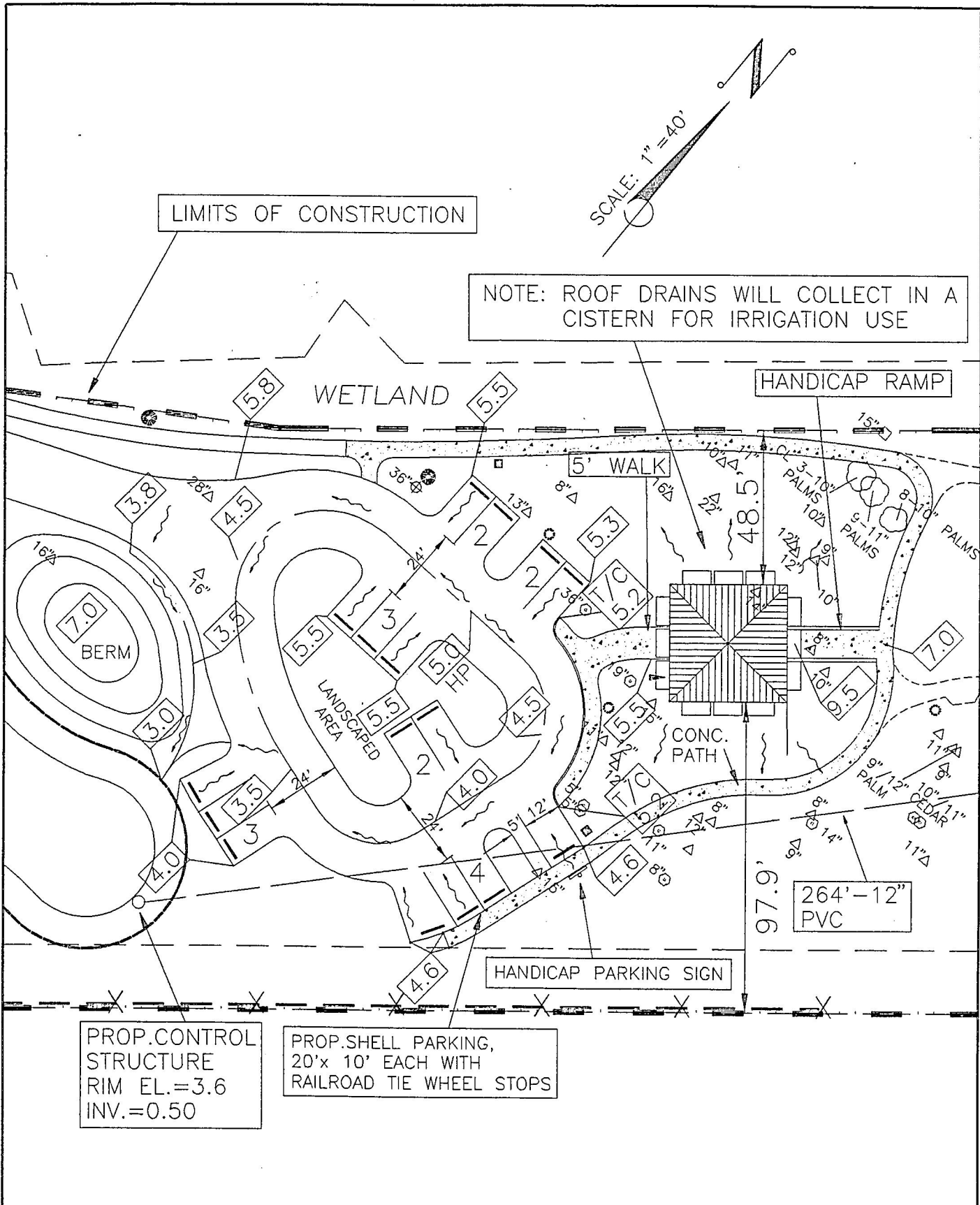
DURANTE PARK

PROJECT NO.: 93072.02
DATE: 1/3/95
DRAWN BY: DPO
CHECKED BY: UEM
SCALE: 3"=1'-0"
SHEET NO.

SK - 4

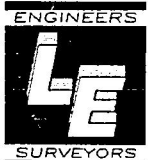
NO.	DATE	REVISION

NO. DATE REVISION



PROP. CONTROL
STRUCTURE
RIM EL.=3.6
INV.=0.50

PROP. SHELL PARKING,
20'x 10' EACH WITH
RAILROAD TIE WHEEL STOPS



Landry & Esber
ENGINEERS · SURVEYORS

130 N. Tamiami Trail, Suite 301 · Sarasota, Florida 34236
(813)955-6004 · FAX (813)955-7501

REVISED	BY	DATE	DESCRIPTION

SK-5